

The Price Sheet

Ontario Market Price Trends for December 2009

	MONTHLY AVERAGES (CDN\$/Metric Tonne)											
	Jan 2009	Feb 2009	Mar 2009	April 2009	May 2009	June 2009	July 2009	Aug 2009	Sept 2009	Oct 2009	Nov 2009	Dec 2009
Aluminum Cans	1089	1016	972	1059	1116	1116	1215	1374	1362	1303	1418	1542
Steel Cans	44	44	23	27	53	56	74	100	159	163	140	179
Glass (clear)	27	27	27	25	25	25	25	25	25	25	25	25
Glass (mixed)	(19)	(19)	(19)	(18)	(18)	(18)	(18)	(18)	(18)	(18)	(18)	(18)
PET (mixed)	66	109	167	176	200	222	243	191	189	214	231	238
HDPE (mixed)	227	292	341	264	299	313	325	311	320	407	384	361
Plastic Tubs & Lids	6	10	40	35	24	16	23	26	24	17	20	22
Film Plastic	(15)	(16)	(10)	0	3	12	10	13	11	14	9	10
Polystyrene	75	75	75	75	75	75	75	75	75	75	75	75
Newspaper (ONP #8)	38	49	58	69	64	69	68	73	93	90	93	101
Corrugated (OCC)	29	40	48	51	55	71	82	78	96	88	88	88
Hardpack (OBB/OCC)	12	18	27	37	35	42	51	45	59	56	57	59
Boxboard (OBB)	3	9	15	19	17	28	30	30	41	39	39	44
Polycoat Containers	28	31	30	30	34	31	31	31	37	58	64	68
Composite Index	48	54	62	70	71	77	81	84	101	100	102	110

	YEARLY AVERAGES (CDN\$/Metric Tonne)															
	1994	1995	1996	1997	1998	1999	2000	2001	2002	2003	2004	2005	2006	2007	2008	2009
Aluminum Cans	1731	2045	2045	1827	1595	1608	1893	1700	1709	1619	1772	1763	2169	2065	1904	1215
Steel Cans							52	26	47	76	191	116	141	168	245	89
Glass (clear)	47	48	47	47	49	50	50	31	29	34	38	36	36	33	27	26
Glass (mixed)			0	(4)	(25)	(20)	(15)	(15)	(15)	(19)	(12)	(31)	(31)	(31)	(24)	(18)
PET (mixed)	181	650	650	155	300	144	326	324	166	278	432	507	314	368	352	187
HDPE (mixed)	259	345	356	447	226	211	373	257	233	364	428	683	565	524	573	320
Plastic Tubs & Lids		100	100	76	66	3	5	5	0	12	51	104	128	146	204	22
Film Plastic	40	40	40	(4)	(5)	(12)	7	26	0	8	55	148	137	51	35	3
Polystyrene	88	110	125	125	125	125	125	125	75	75	75	75	75	75	75	75
Newspaper (ONP #8)	80	214	159	31	48	76	118	76	100	99	114	101	89	118	121	72
Corrugated (OCC)	94	159	214	97	73	99	112	55	106	89	114	95	80	131	111	68
Hardpack (OBB/OCC)	38	159	120	5	17	20	65	38	63	62	75	68	50	89	76	42
Boxboard (OBB)										43	62	53	41	70	62	26
Polycoat Containers		189	198	99	26	24	83	57	58	64	67	66	59	84	75	39
Composite Index							134	95	113	114	131	124	111	145	150	80

Notes:

- 1) Prices are for baled post-consumer residential materials (except glass, which is loose).
- 2) Prices are FOB the municipality except for glass and polystyrene which are delivery to mill / industry
- 3) Prices are compiled from a range of municipal programs across Ontario combined with information from industry representatives. Prices may not be the same as actual prices being paid in any given program.
- 4) The Composite Index is calculated using the overall composition of residential Blue Box material recovered and marketed in Ontario as reported from the approved 2007 WDO datacall with some additional allocations to material categories. It does not include mixed plastics. Mixed glass includes coloured glass. ONP8 includes a quantity of lower grade papers sold at lower prices. Composition figures are updated annually. Details available upon request.

For more information please contact:

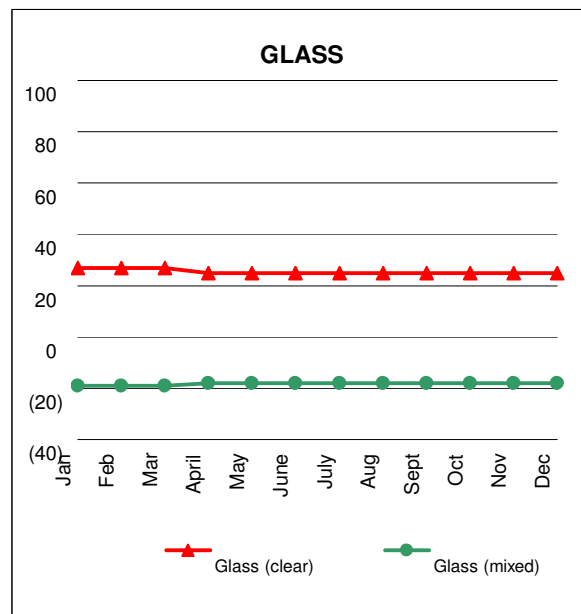
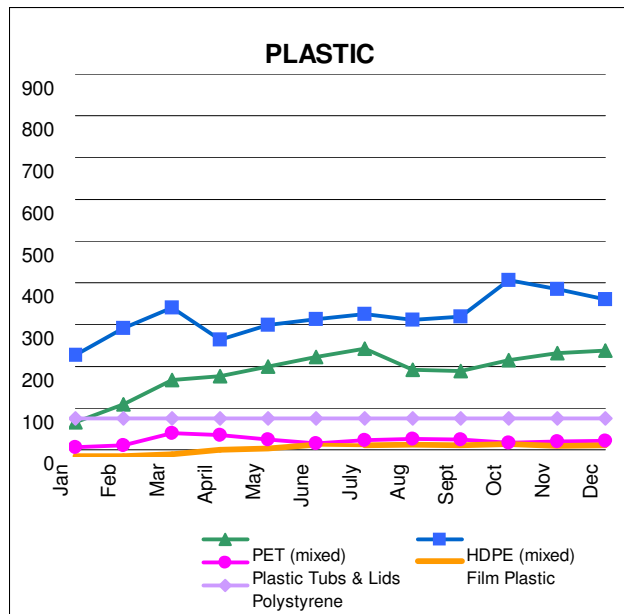
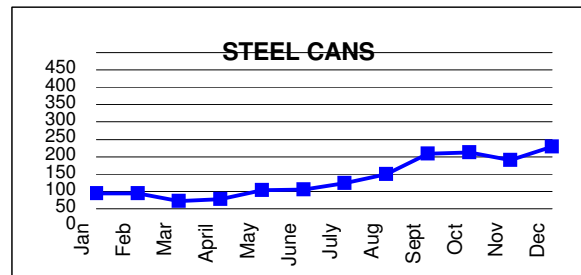
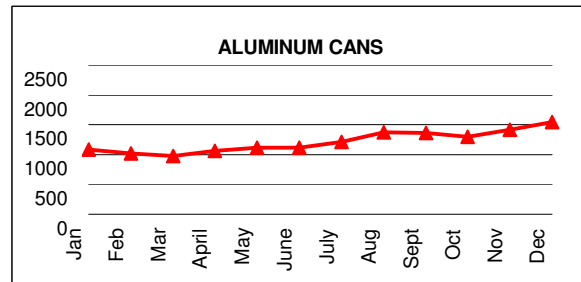
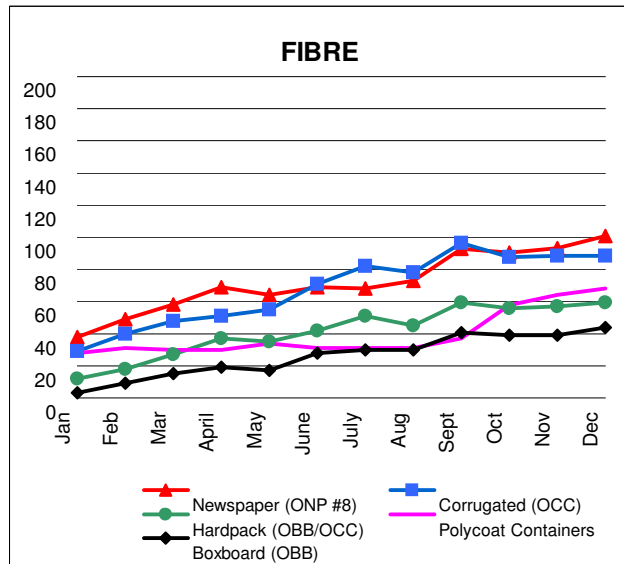
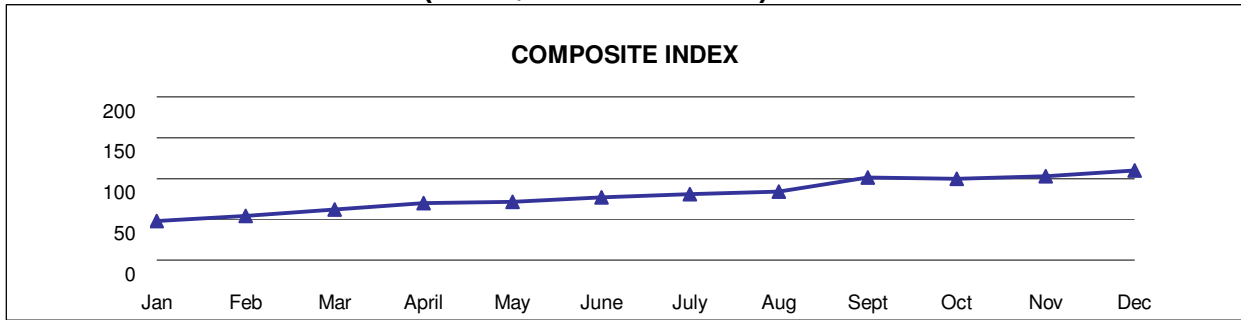
John Dixie at 647-777-3366 (Toll-Free: 888-277-2762, Ext. 3366) email: jdixie@stewardedge.ca

StewardEdge, 26 Wellington Street East, Suite 601, Toronto, Ontario, M5E 1S2

Past editions of the Price Sheet are archived on the CSR website at www.csr.org

The Price Sheet

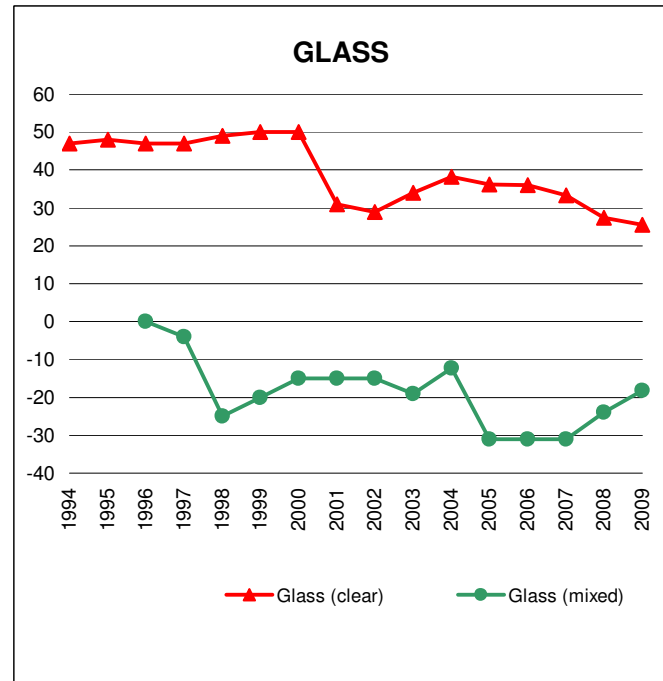
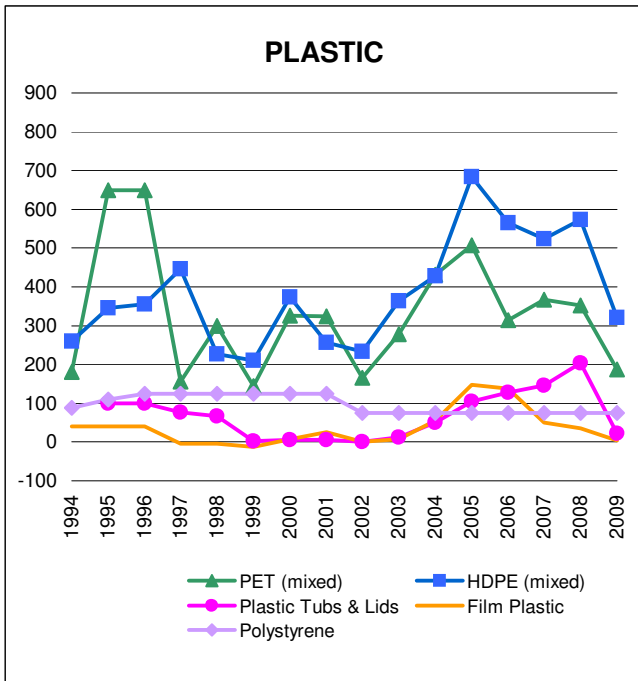
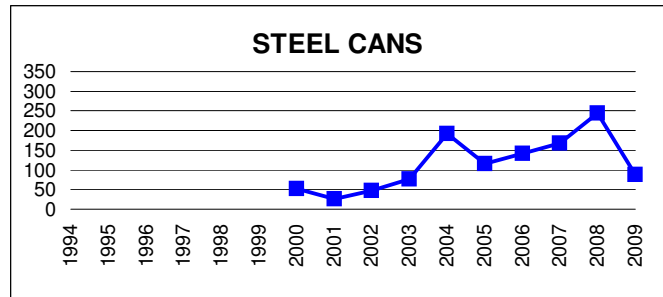
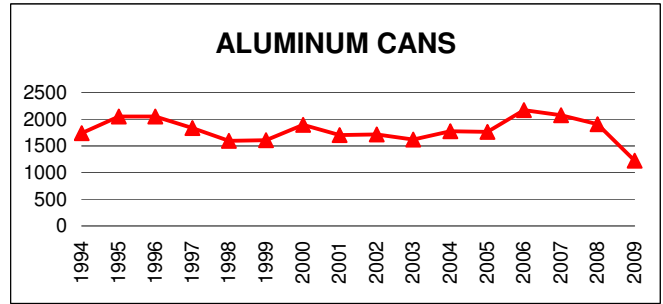
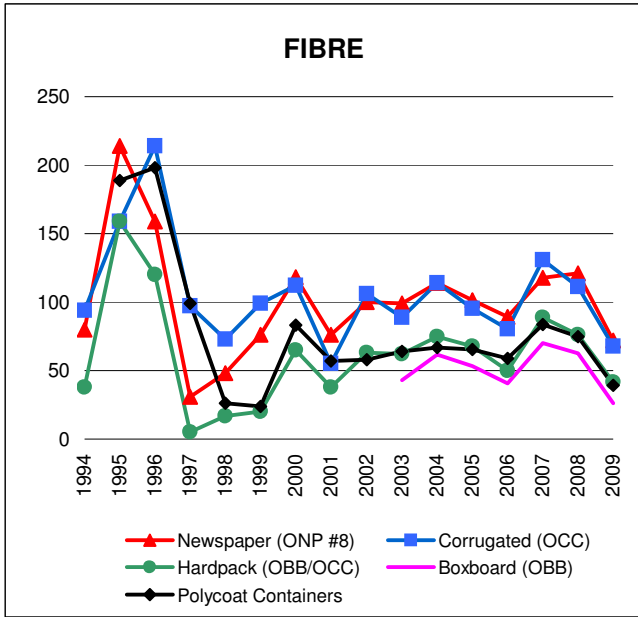
Ontario Monthly Averages from Jan 2009 to Dec 2009
(CDN\$/Metric Tonne)



Graphs produced from Monthly Averages Table.

The Price Sheet

Ontario Historical Yearly Averages (CDN\$/Metric Tonne)



Graphs produced from Yearly Averages Table