



# The Price Sheet

## Ontario Market Price Trends for April 2009

### MONTHLY AVERAGES (CDN\$/Metric Tonne)

	May 2008	June 2008	July 2008	Aug 2008	Sept 2008	Oct 2008	Nov 2008	Dec 2008	Jan 2009	Feb 2009	Mar 2009	April 2009
Aluminum Cans	2183	2174	2209	2017	1872	1618	1433	1082	1089	1016	972	1059
Steel Cans	387	369	416	379	236	110	31	41	44	44	23	27
Glass (clear)	27	27	27	27	27	27	27	27	27	27	27	25
Glass (mixed)	(31)	(31)	(17)	(17)	(17)	(17)	(17)	(17)	(19)	(19)	(19)	(18)
PET (mixed)	404	378	389	417	432	411	53	54	66	109	167	176
HDPE (mixed)	577	556	564	643	798	822	221	181	227	292	341	264
Plastic Tubs & Lids	245	266	271	287	295	286	44	6	6	10	40	35
Film Plastic	54	34	34	27	24	24	9	(5)	(15)	(16)	(10)	0
Polystyrene	na	na	75	75	75	75	75	75	75	75	75	na
Newspaper (ONP #8)	127	129	149	169	167	126	60	39	38	49	58	69
Corrugated (OCC)	132	120	121	121	123	78	51	31	29	40	48	51
Hardpack (OBB/OCC)	88	74	79	80	82	46	na	15	12	18	27	37
Boxboard (OBB)	69	72	70	73	68	36	na	14	3	9	15	19
Polycoat Containers	70	70	86	76	77	74	47	45	28	31	30	30
<b>Composite Index</b>	<b>168</b>	<b>165</b>	<b>180</b>	<b>191</b>	<b>185</b>	<b>143</b>	<b>76</b>	<b>47</b>	<b>48</b>	<b>54</b>	<b>62</b>	<b>70</b>

### YEARLY AVERAGES (CDN\$/Metric Tonne)

	1994	1995	1996	1997	1998	1999	2000	2001	2002	2003	2004	2005	2006	2007	2008	2009
Aluminum Cans	1731	2045	2045	1827	1595	1608	1893	1700	1709	1619	1772	1763	2169	2065	1904	1034
Steel Cans							52	26	47	76	191	116	141	168	245	35
Glass (clear)	47	48	47	47	49	50	50	31	29	34	38	36	36	33	27	27
Glass (mixed)			0	(4)	(25)	(20)	(15)	(15)	(15)	(19)	(12)	(31)	(31)	(31)	(24)	(19)
PET (mixed)	181	650	650	155	300	144	326	324	166	278	432	507	314	368	352	129
HDPE (mixed)	259	345	356	447	226	211	373	257	233	364	428	683	565	524	573	281
Plastic Tubs & Lids		100	100	76	66	3	5	5	0	12	51	104	128	146	204	23
Film Plastic	40	40	40	(4)	(5)	(12)	7	26	0	8	55	148	137	51	35	(10)
Polystyrene	88	110	125	125	125	125	125	125	75	75	75	75	75	75	75	75
Newspaper (ONP #8)	80	214	159	31	48	76	118	76	100	99	114	101	89	118	121	53
Corrugated (OCC)	94	159	214	97	73	99	112	55	106	89	114	95	80	131	111	42
Hardpack (OBB/OCC)	38	159	120	5	17	20	65	38	63	62	75	68	50	89	76	23
Boxboard (OBB)										43	62	53	41	70	62	11
Polycoat Containers		189	198	99	26	24	83	57	58	64	67	66	59	84	75	30
<b>Composite Index</b>							<b>134</b>	<b>95</b>	<b>113</b>	<b>114</b>	<b>131</b>	<b>124</b>	<b>111</b>	<b>145</b>	<b>150</b>	<b>59</b>

Notes:

- Prices are for baled post-consumer residential materials (except glass, which is loose).
- Prices are FOB the municipality except for glass and polystyrene which are delivery to mill / industry
- Prices are compiled from a range of municipal programs across Ontario combined with information from industry representatives. Prices may not be the same as actual prices being paid in any given program.
- The CSR Composite Index is calculated using the overall composition of residential Blue Box material recovered and marketed in Ontario as reported from the approved 2007 WDO datacall with some additional allocations to material categories. It does not include mixed plastics. Mixed glass includes coloured glass. ONP8 includes a quantity of lower grade papers sold at lower prices. Composition figures are updated annually. Details available upon request.

For more information please contact:

John Dixie at 647-777-3366 (Toll-Free: 888-277-2762, Ext. 3366) email: [jdixie@csr.org](mailto:jdixie@csr.org)

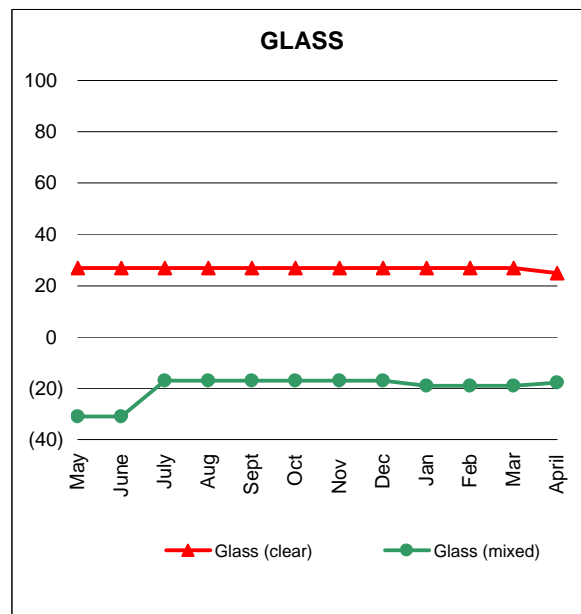
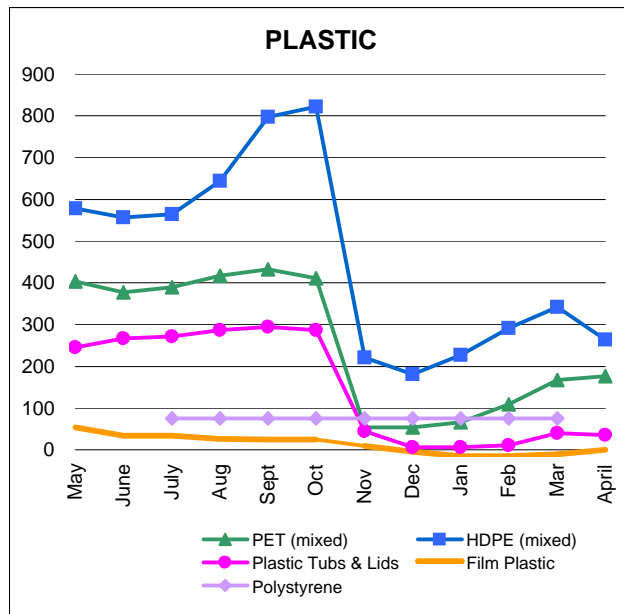
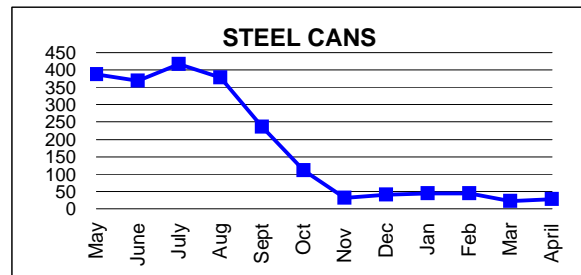
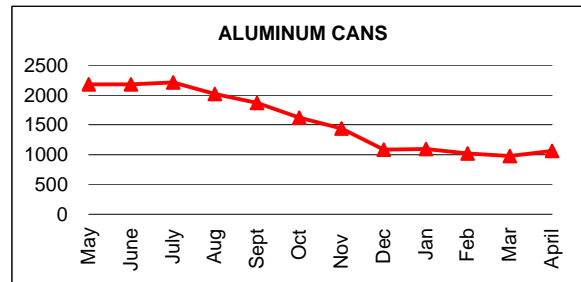
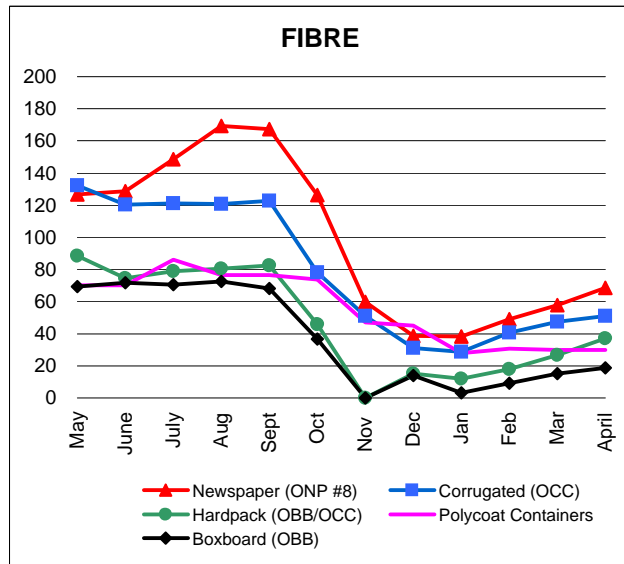
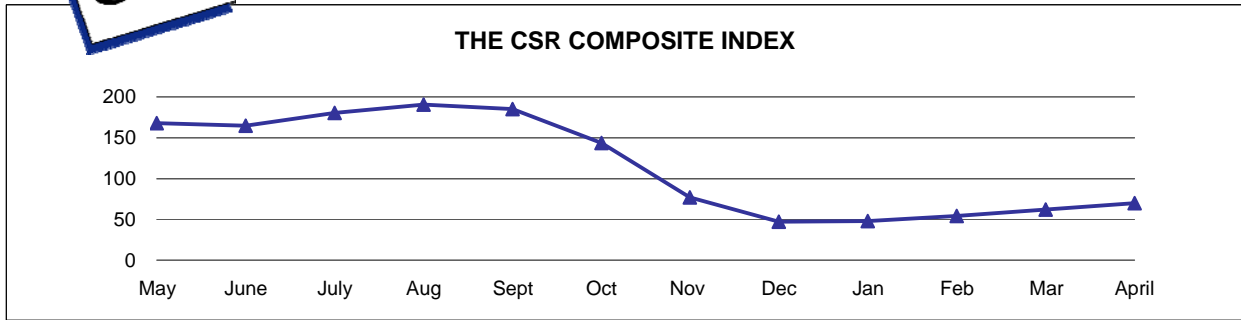
CSR, 26 Wellington Street East, Suite 601, Toronto, Ontario, M5E 1S2

Past editions of the Price Sheet are archived on CSR's website: [www.csr.org](http://www.csr.org)



# The Price Sheet

Ontario Monthly Averages from May 2008 to April 2009  
(CDN\$/Metric Tonne)

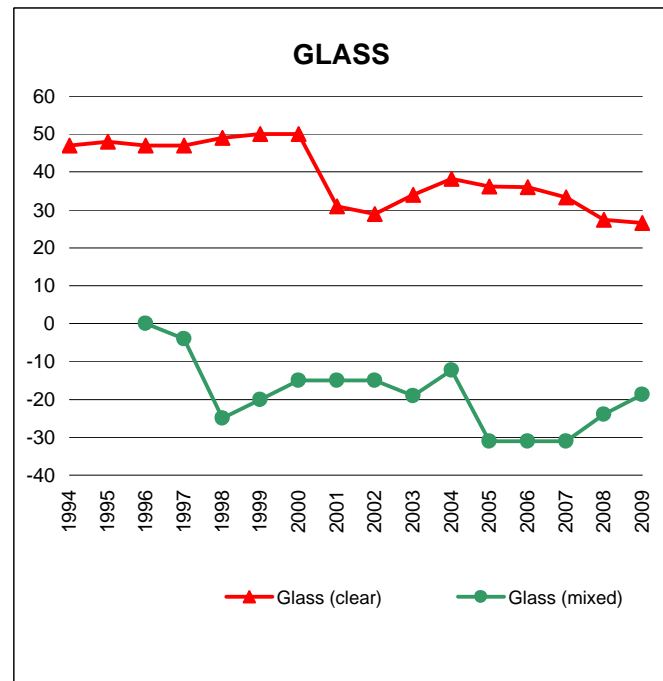
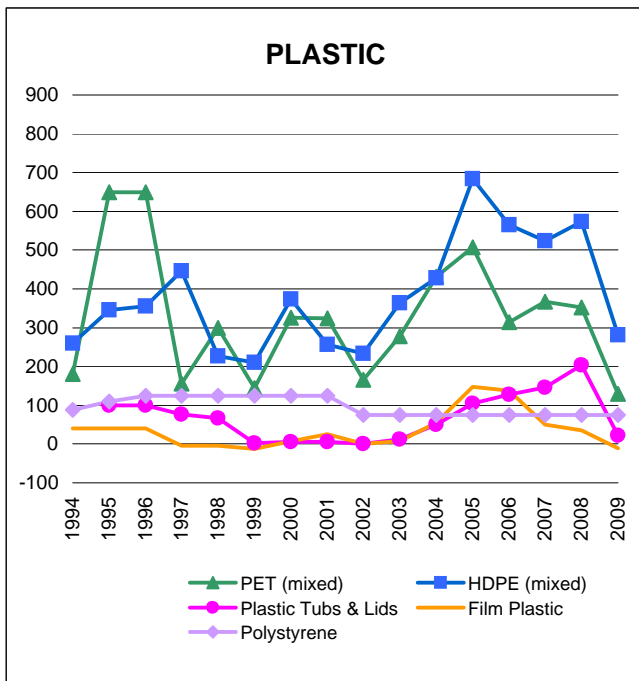
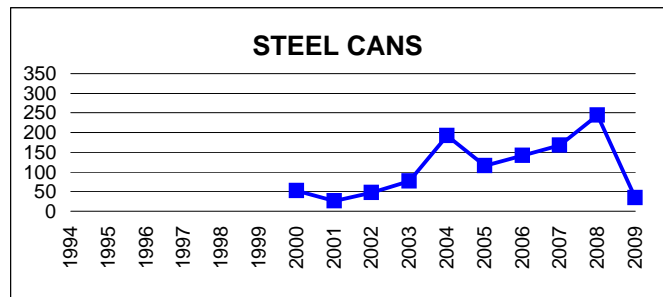
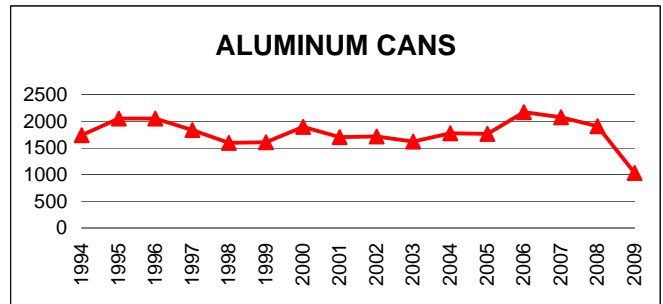
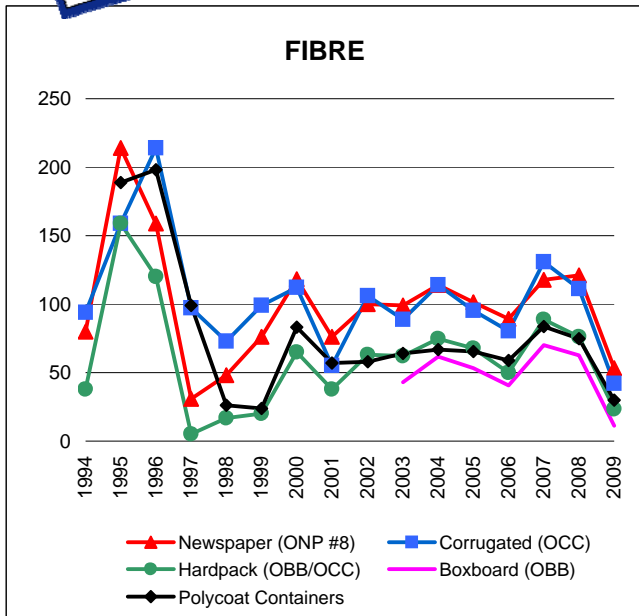


Graphs produced from Monthly Averages Table.



# The Price Sheet

## Ontario Historical Yearly Averages (CDN\$/Metric Tonne)



Graphs produced from Yearly Averages Table