



# The Price Sheet

## Ontario Spot Market Price Trends for January 2009

### MONTHLY AVERAGES (CDN\$/Metric Tonne)

	Feb 2008	Mar 2008	Apr 2008	May 2008	June 2008	July 2008	Aug 2008	Sept 2008	Oct 2008	Nov 2008	Dec 2008	Jan 2009
Aluminum Cans	1938	2203	2282	2183	2174	2209	2017	1872	1618	1433	1082	1089
Steel Cans	196	218	345	387	369	416	379	236	110	31	41	44
Glass (clear)	28	28	27	27	27	27	27	27	27	27	27	27
Glass (mixed)	(31)	(31)	(31)	(31)	(31)	(17)	(17)	(17)	(17)	(17)	(17)	(19)
PET (mixed)	419	434	430	404	378	389	417	432	411	53	54	66
HDPE (mixed)	647	637	601	577	556	564	643	798	822	221	181	227
Plastic Tubs & Lids	169	183	230	245	266	271	287	295	286	44	6	6
Film Plastic	55	57	56	54	34	34	27	24	24	9	(5)	(15)
Polystyrene	na	na	na	na	na	75	75	75	75	75	75	75
Newspaper (ONP #8)	115	130	133	127	129	149	169	167	126	60	39	38
Corrugated (OCC)	131	148	147	132	120	121	121	123	78	51	31	29
Hardpack (OBB/OCC)	87	98	104	88	74	79	80	82	46	na	15	12
Boxboard (OBB)	66	77	77	69	72	70	73	68	36	na	14	3
Polycoat Containers	87	92	88	70	70	86	76	77	74	47	45	28
<b>Composite Index</b>	<b>150</b>	<b>167</b>	<b>176</b>	<b>168</b>	<b>165</b>	<b>180</b>	<b>191</b>	<b>185</b>	<b>143</b>	<b>76</b>	<b>47</b>	<b>48</b>

### YEARLY AVERAGES (CDN\$/Metric Tonne)

	1994	1995	1996	1997	1998	1999	2000	2001	2002	2003	2004	2005	2006	2007	2008	2009
Aluminum Cans	1731	2045	2045	1827	1595	1608	1893	1700	1709	1619	1772	1763	2169	2065	1904	1089
Steel Cans							52	26	47	76	191	116	141	168	245	44
Glass (clear)	47	48	47	47	49	50	50	31	29	34	38	36	36	33	27	27
Glass (mixed)			0	(4)	(25)	(20)	(15)	(15)	(15)	(19)	(12)	(31)	(31)	(31)	(24)	(19)
PET (mixed)	181	650	650	155	300	144	326	324	166	278	432	507	314	368	352	66
HDPE (mixed)	259	345	356	447	226	211	373	257	233	364	428	683	565	524	573	227
Plastic Tubs & Lids		100	100	76	66	3	5	5	0	12	51	104	128	146	204	6
Film Plastic	40	40	40	(4)	(5)	(12)	7	26	0	8	55	148	137	51	35	(15)
Polystyrene	88	110	125	125	125	125	125	125	75	75	75	75	75	75	75	75
Newspaper (ONP #8)	80	214	159	31	48	76	118	76	100	99	114	101	89	118	121	38
Corrugated (OCC)	94	159	214	97	73	99	112	55	106	89	114	95	80	131	111	29
Hardpack (OBB/OCC)	38	159	120	5	17	20	65	38	63	62	75	68	50	89	76	12
Boxboard (OBB)										43	62	53	41	70	62	3
Polycoat Containers		189	198	99	26	24	83	57	58	64	67	66	59	84	75	28
<b>Composite Index</b>							<b>134</b>	<b>95</b>	<b>113</b>	<b>114</b>	<b>131</b>	<b>124</b>	<b>111</b>	<b>145</b>	<b>150</b>	<b>48</b>

Indicates FOB the municipality

Indicates delivery to mill / industry

#### Notes:

- Prices are for baled post-consumer residential materials (except glass, which is loose).
- Prices are compiled from a range of municipal programs across Ontario combined with information from industry representatives. Prices may not be the same as actual prices being paid in any given program.
- The CSR Composite Index is calculated using the overall composition of residential Blue Box material recovered and marketed in Ontario as reported from the approved 2006 WDO datacall with some additional allocations to material categories. It does not include mixed plastics. Mixed glass includes coloured glass. ONP8 includes a quantity of lower grade papers sold at lower prices. Composition figures are updated annually. Details available upon request.

For more information please contact:

John Dixie at 647-777-3366 (Toll-Free: 888-277-2762, Ext. 3366) email: [jdixie@csr.org](mailto:jdixie@csr.org)

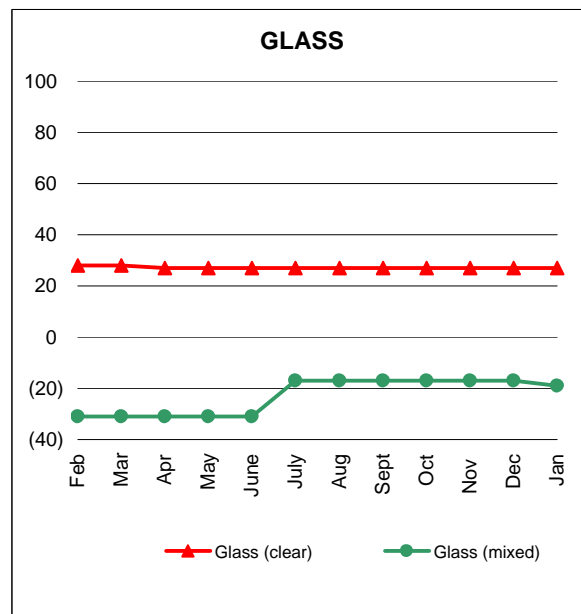
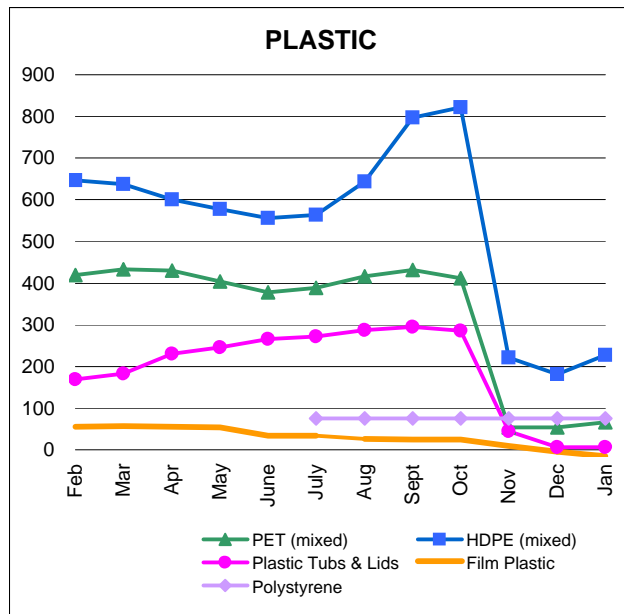
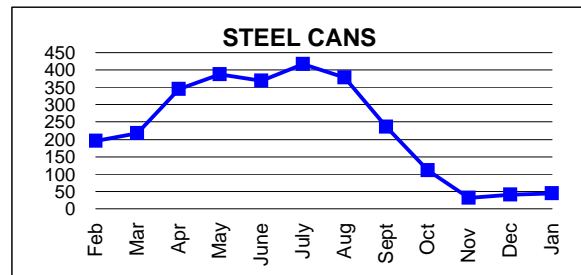
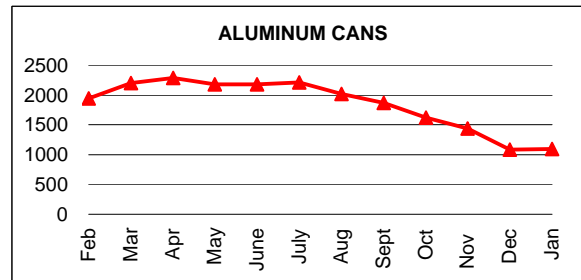
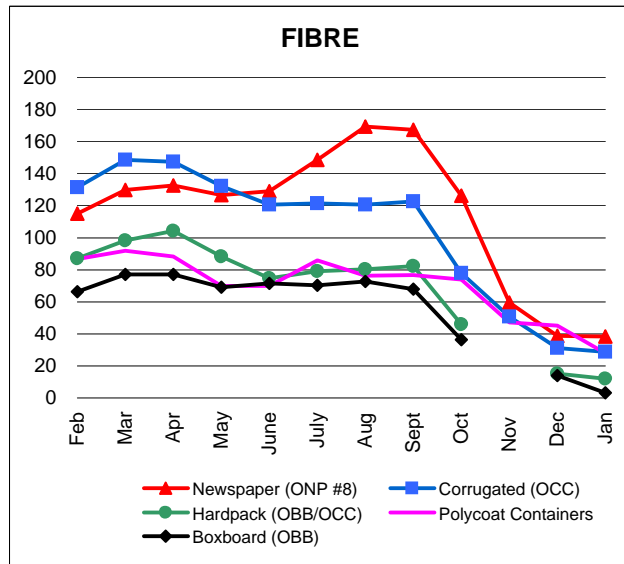
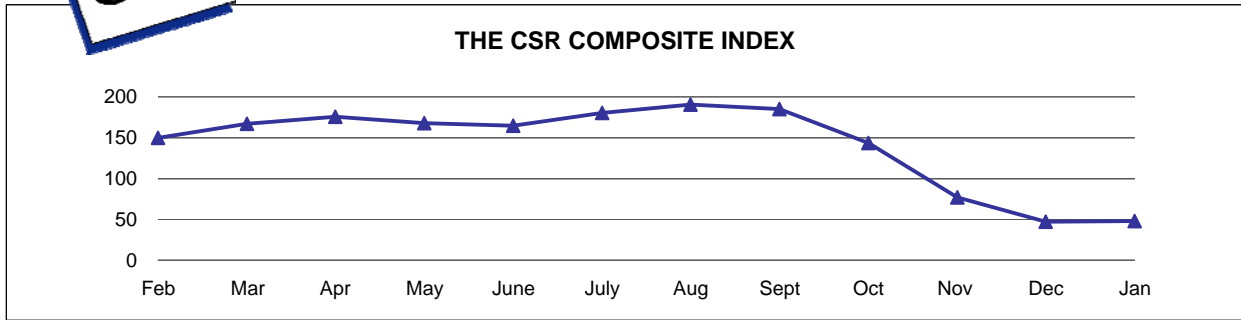
CSR, 26 Wellington Street East, Suite 601, Toronto, Ontario, M5E 1S2

Past editions of the Price Sheet are archived on CSR's website: [www.csr.org](http://www.csr.org)



# The Price Sheet

Ontario Monthly Averages from Feb 2008 to Jan 2009  
(CDN\$/Metric Tonne)

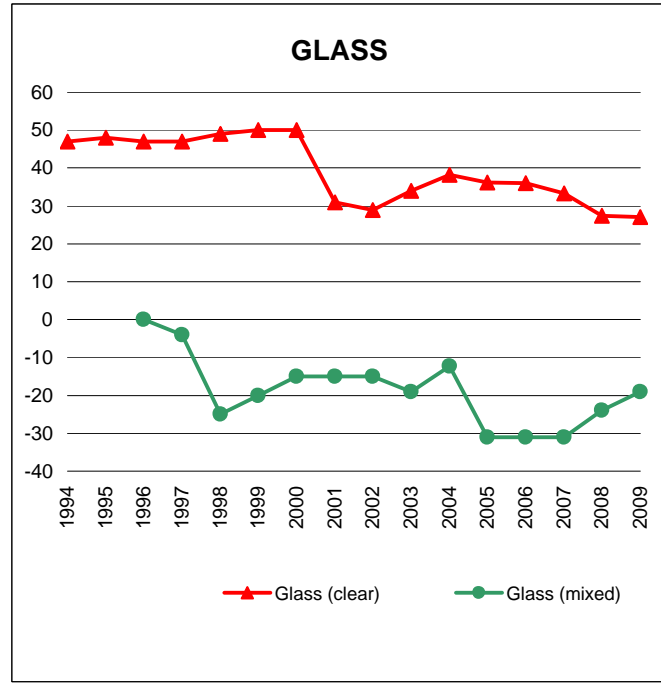
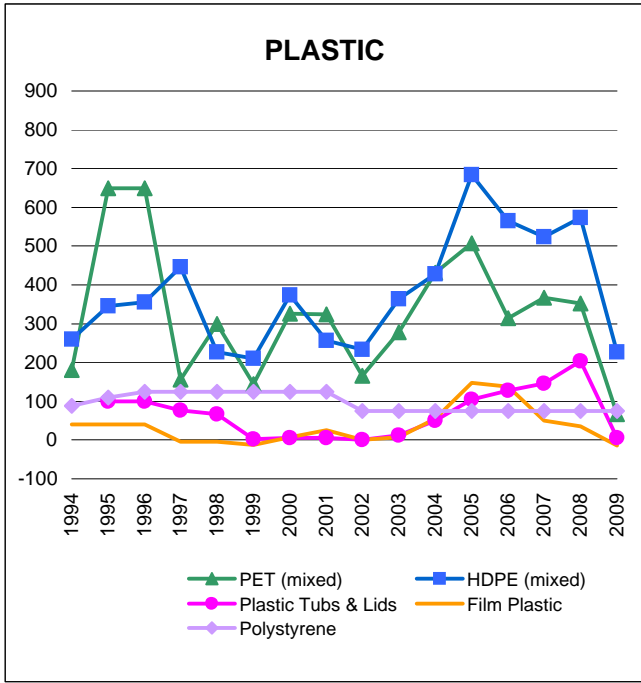
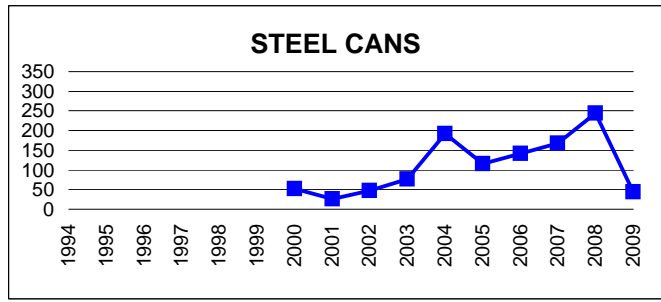
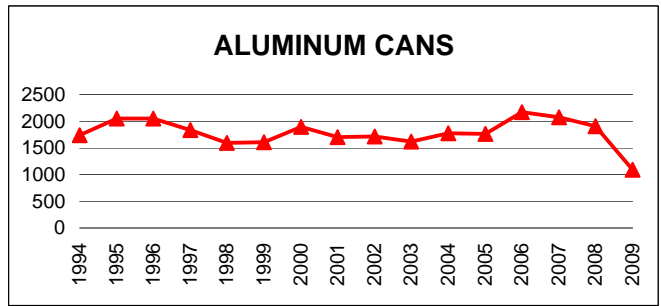
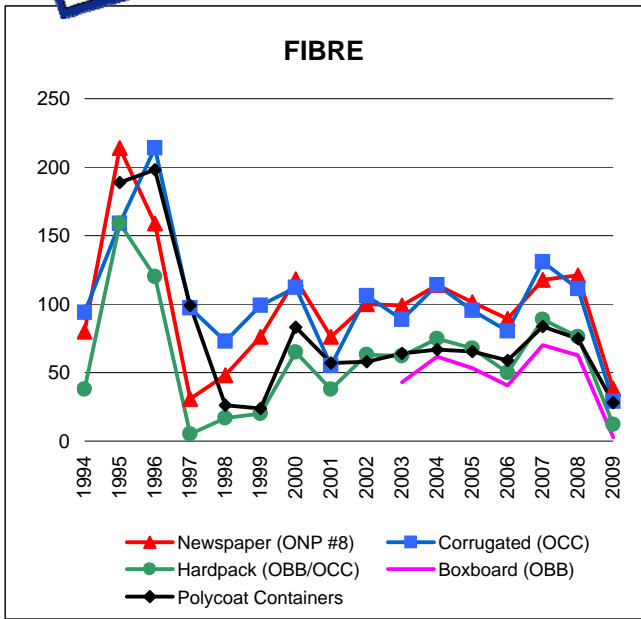


Graphs produced from Monthly Averages Table.



# The Price Sheet

## Ontario Historical Yearly Averages (CDN\$/Metric Tonne)



Graphs produced from Yearly Averages Table