



# The Price Sheet

## Ontario Spot Market Price Trends for June 2008

### MONTHLY AVERAGES (CDN\$/Metric Tonne)

	July 2007	Aug 2007	Sept 2007	Oct 2007	Nov 2007	Dec 2007	Jan 2008	Feb 2008	Mar 2008	Apr 2008	May 2008	June 2008
Aluminum Cans	2028	1921	1760	1709	1763	1806	1832	1938	2203	2282	2183	2174
Steel Cans	160	168	184	165	135	161	211	196	218	345	387	369
Glass (clear)	33	31	31	30	30	29	29	28	28	27	27	27
Glass (mixed)	(31)	(31)	(31)	(31)	(31)	(31)	(31)	(31)	(31)	(31)	(31)	(31)
PET (mixed)	357	358	356	362	353	378	401	419	434	430	404	378
HDPE (mixed)	574	575	591	572	574	591	624	647	637	601	577	556
Plastic Tubs & Lids	165	165	173	167	139	143	169	169	183	230	245	266
Film Plastic	54	54	54	56	56	56	56	55	57	56	54	34
Polystyrene	75	75	75	75	75	n/a	n/a	n/a	n/a	n/a	n/a	n/a
Newspaper (ONP #8)	105	104	110	104	105	109	113	115	130	133	127	129
Corrugated (OCC)	129	133	137	131	127	131	130	131	148	147	132	120
Hardpack (OBB/OCC)	81	95	96	93	90	90	85	87	98	104	88	74
Boxboard (OBB)	68	70	71	71	70	68	65	66	77	77	69	72
Polycoat Containers	92	91	89	87	85	89	84	87	92	88	70	70
<b>Composite Index</b>	<b>140</b>	<b>140</b>	<b>143</b>	<b>137</b>	<b>136</b>	<b>142</b>	<b>147</b>	<b>150</b>	<b>167</b>	<b>176</b>	<b>168</b>	<b>165</b>

### YEARLY AVERAGES (CDN\$/Metric Tonne)

	1994	1995	1996	1997	1998	1999	2000	2001	2002	2003	2004	2005	2006	2007	2008
Aluminum Cans	1731	2045	2045	1827	1595	1608	1893	1700	1709	1619	1772	1763	2169	2065	2102
Steel Cans							52	26	47	76	191	116	141	168	288
Glass (clear)	47	48	47	47	49	50	50	31	29	34	38	36	36	33	28
Glass (mixed)			0	(4)	(25)	(20)	(15)	(15)	(15)	(19)	(12)	(31)	(31)	(31)	(31)
PET (mixed)	181	650	650	155	300	144	326	324	166	278	432	507	314	368	411
HDPE (mixed)	259	345	356	447	226	211	373	257	233	364	428	683	565	524	607
Plastic Tubs & Lids		100	100	76	66	3	5	5	0	12	51	104	128	146	210
Film Plastic	40	40	40	(4)	(5)	(12)	7	26	0	8	55	148	137	51	52
Polystyrene	88	110	125	125	125	125	125	125	75	75	75	75	75	75	n/a
Newspaper (ONP #)	80	214	159	31	48	76	118	76	100	99	114	101	89	118	124
Corrugated (OCC)	94	159	214	97	73	99	112	55	106	89	114	95	80	131	135
Hardpack (OBB/OC)	38	159	120	5	17	20	65	38	63	62	75	68	50	89	90
Boxboard (OBB)										43	62	53	41	70	71
Polycoat Containers		189	198	99	26	24	83	57	58	64	67	66	59	84	82
<b>Composite Index</b>							<b>134</b>	<b>95</b>	<b>113</b>	<b>114</b>	<b>131</b>	<b>124</b>	<b>111</b>	<b>145</b>	<b>162</b>

□ Indicates FOB the municipality

■ Indicates delivery to mill or industry

#### Notes:

- Prices are for baled post-consumer residential materials (except glass, which is loose).
- Prices are compiled from a range of municipal programs across Ontario combined with information from industry representatives.  
Prices may not be the same as actual prices being paid in any given program.
- The CSR Composite Index is calculated using the overall composition of residential Blue Box material recovered and marketed in Ontario as reported from the approved 2006 WDO datacall with some additional allocations to material categories. It does not include mixed plastics. Mixed glass includes coloured glass. ONP8 includes a quantity of lower grade papers sold at lower prices. Composition figures are updated annually. Details available upon request.

For more information please contact:

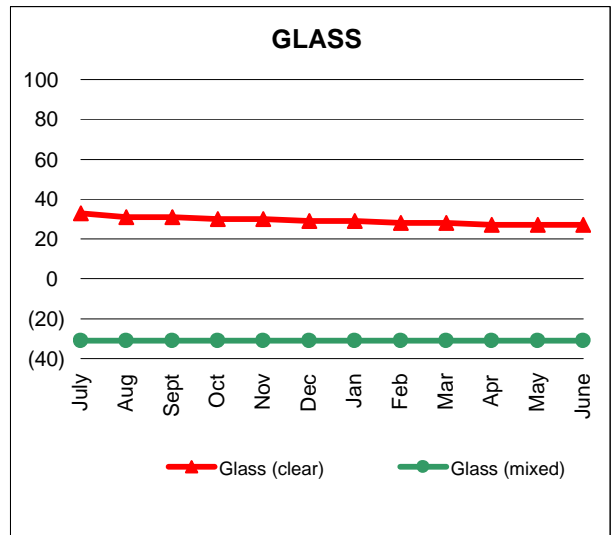
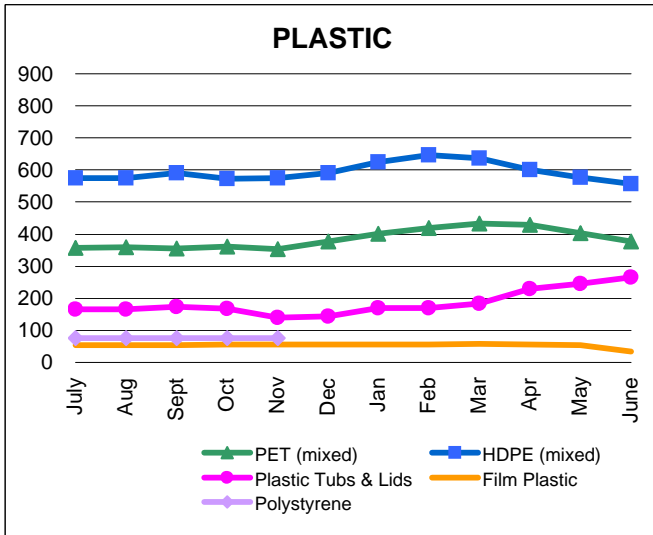
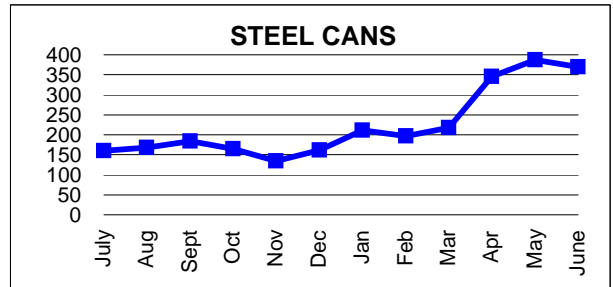
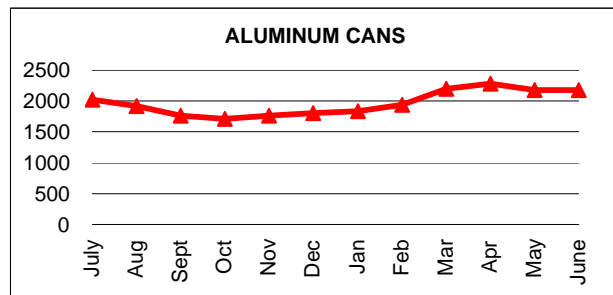
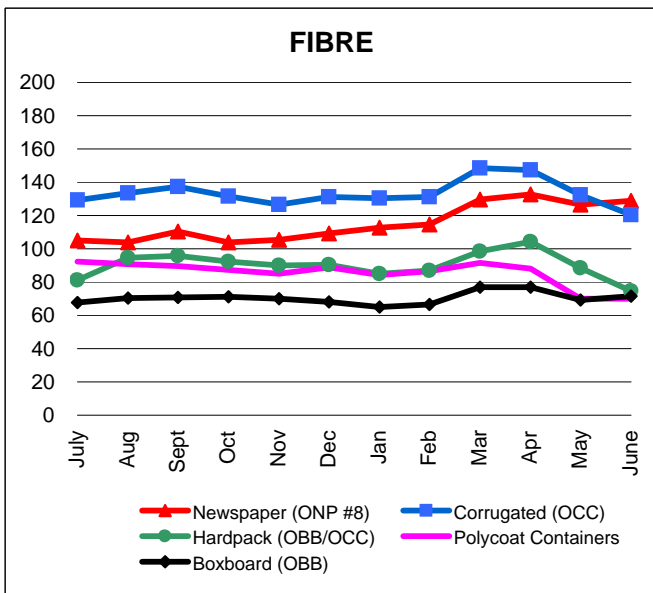
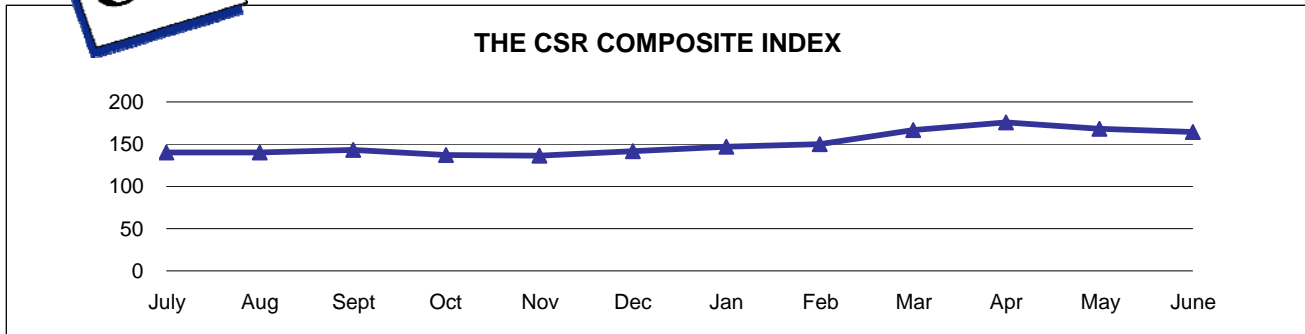
John Dixie at 647-777-3366 (Toll-Free: 888-277-2762, Ext. 3366) email: [jdixie@csr.org](mailto:jdixie@csr.org)  
CSR, 26 Wellington Street East, Suite 601, Toronto, Ontario, M5E 1S2

Past editions of the Price Sheet are archived on CSR's website: [www.csr.org](http://www.csr.org)



# The Price Sheet

Ontario Monthly Averages from July 2007 to June 2008  
(CDN\$/Metric Tonne)

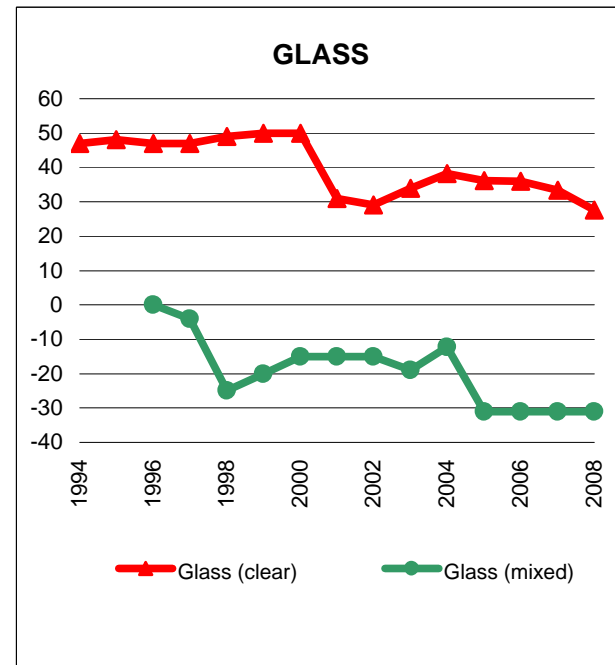
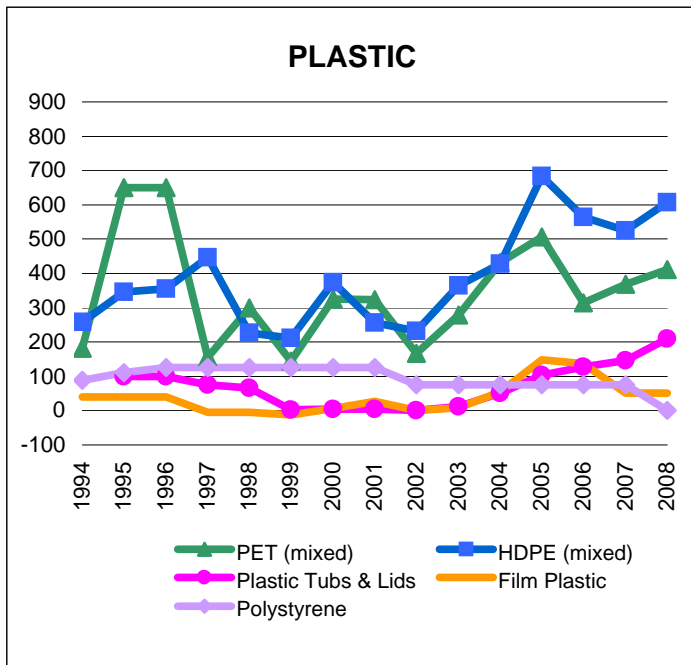
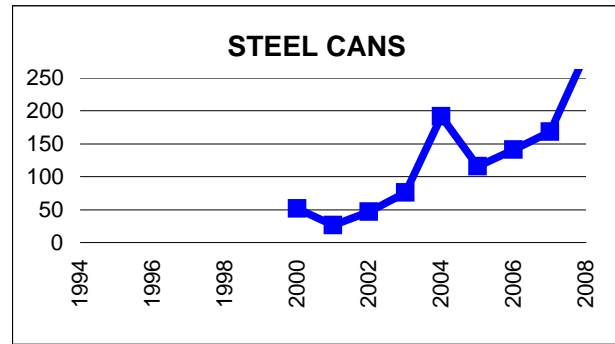
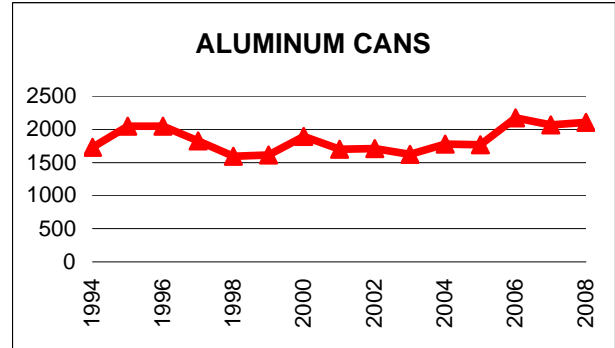
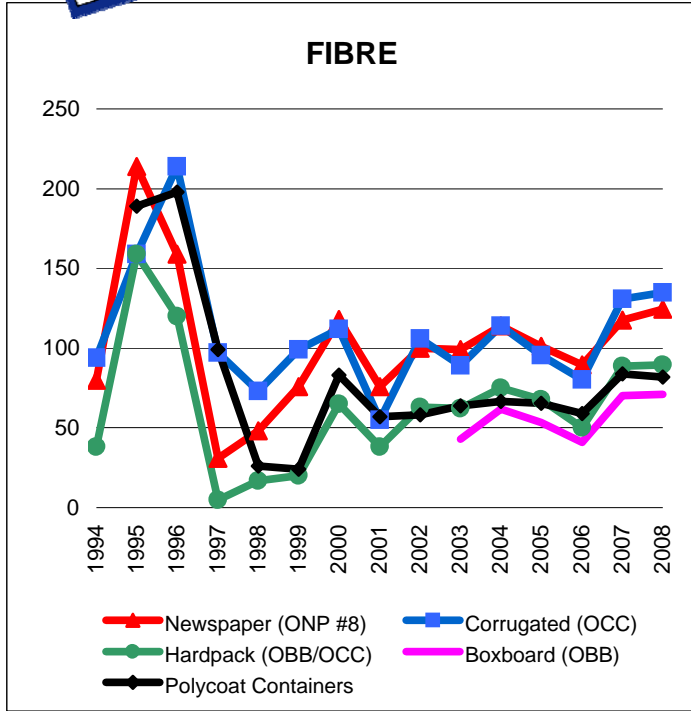


Graphs produced from Monthly Averages Table



# The Price Sheet

## Ontario Historical Yearly Averages (CDN\$/Metric Tonne)



Graphs produced from Yearly Averages Table



# The Price Sheet

## National Market Prices for June 2008

	QUARTERLY AVERAGES (CDN\$/Metric Tonne)											
	Western Canada				Central (Ontario)				Eastern Canada			
	Q3	Q4	Q1	Q2	Q3	Q4	Q1	Q2	Q3	Q4	Q1	Q2
	Sept 07	Dec 07	Mar 08	Jun 08	Sept 07	Dec 07	Mar 08	Jun 08	Sept 07	Dec 07	Mar 08	Jun 08
<b>Aluminum Cans</b>	1701	1710	2120	n/a	1760	1806	2203	2174	1773	1781	2240	2339
<b>Steel Cans</b>	n/a	n/a	n/a	n/a	184	161	218	369	139	104	172	317
<b>Glass (clear/flint)</b>	n/a	n/a	n/a	n/a	36	29	28	27	n/a	n/a	n/a	n/a
<b>Glass (coloured/mixed)</b>	n/a	n/a	n/a	n/a	(31)	(31)	(31)	(31)	n/a	n/a	n/a	n/a
<b>PET (mixed)</b>	388	434	479	n/a	356	378	434	378	379	406	435	444
<b>HDPE (mixed)</b>	535	559	501	n/a	591	591	637	556	552	598	577	618
<b>HDPE (natural)</b>	700	664	657	n/a	n/a	n/a	n/a	n/a	n/a	n/a	n/a	n/a
<b>ONP (#8)</b>	n/a	n/a	n/a	n/a	110	109	130	129	110	110	n/a	n/a
<b>ONP (#6)</b>	n/a	n/a	n/a	n/a	n/a	n/a	n/a	n/a	93	93	n/a	n/a
<b>OCC</b>	n/a	n/a	n/a	n/a	137	131	148	120	115	119	n/a	n/a
<b>Residential (soft) Mix<sup>4</sup></b>	n/a	n/a	n/a	n/a	96	90	98	75	n/a	n/a	n/a	n/a
<b>Polycoat Containers</b>	n/a	n/a	n/a	n/a	89	89	92	70	n/a	n/a	n/a	n/a

Indicates FOB the municipality
  Indicates delivery to mill or industry

**Notes:**

- 1) Prices are for baled post-consumer residential materials (except glass, which is loose).
- 2) Prices are compiled from a range of municipal programs across Canada combined with information from industry representatives. Prices may not be the same as actual prices being paid in any given program.
- 3) Western Canada: BC, Alberta, Saskatchewan, Manitoba. Central Canada: Ontario. Eastern Canada: Quebec, PEI, Nova Scotia, New Brunswick, Newfoundland
- 4) Pricing for Central Canada (Ontario) is for OBB/OCC hard pack.

For more information please contact:  
 John Dixie at 647-777-3366 (Toll-Free: 888-277-2762, Ext. 3366) email: [jdixie@csr.org](mailto:jdixie@csr.org)  
 CSR, 26 Wellington Street East, Suite 601, Toronto, Ontario, M5E 1S2  
 website: [www.csr.org](http://www.csr.org)