



# The Price Sheet

## Ontario Spot Market Price Trends for May 2008

### MONTHLY AVERAGES (CDN\$/Metric Tonne)

	June 2007	July 2007	Aug 2007	Sept 2007	Oct 2007	Nov 2007	Dec 2007	Jan 2008	Feb 2008	Mar 2008	Apr 2008	May 2008
Aluminum Cans	2093	2028	1921	1760	1709	1763	1806	1832	1938	2203	2282	2183
Steel Cans	159	160	168	184	165	135	161	211	196	218	345	387
Glass (clear)	36	33	31	31	30	30	29	29	28	28	27	27
Glass (mixed)	(31)	(31)	(31)	(31)	(31)	(31)	(31)	(31)	(31)	(31)	(31)	(31)
PET (mixed)	364	357	358	356	362	353	378	401	419	434	430	404
HDPE (mixed)	533	574	575	591	572	574	591	624	647	637	601	577
Plastic Tubs & Lids	147	165	165	173	167	139	143	169	169	183	230	245
Film Plastic	56	54	54	54	56	56	56	56	55	57	56	54
Polystyrene	75	75	75	75	75	75						
Newspaper (ONP #8)	112	105	104	110	104	105	109	113	115	130	133	127
Corrugated (OCC)	118	129	133	137	131	127	131	130	131	148	147	132
Hardpack (OBB/OCC)	77	81	95	96	93	90	90	85	87	98	104	88
Boxboard (OBB)	65	68	70	71	71	70	68	65	66	77	77	69
Polycoat Containers	88	92	91	89	87	85	89	84	87	92	88	70
<b>Composite Index</b>	<b>143</b>	<b>140</b>	<b>140</b>	<b>143</b>	<b>137</b>	<b>136</b>	<b>142</b>	<b>147</b>	<b>150</b>	<b>167</b>	<b>176</b>	<b>168</b>

### YEARLY AVERAGES (CDN\$/Metric Tonne)

	1994	1995	1996	1997	1998	1999	2000	2001	2002	2003	2004	2005	2006	2007	2008
Aluminum Cans	1731	2045	2045	1827	1595	1608	1893	1700	1709	1619	1772	1763	2169	2065	2088
Steel Cans							52	26	47	76	191	116	141	168	271
Glass (clear)	47	48	47	47	49	50	50	31	29	34	38	36	36	33	28
Glass (mixed)			0	(4)	(25)	(20)	(15)	(15)	(15)	(19)	(12)	(31)	(31)	(31)	(31)
PET (mixed)	181	650	650	155	300	144	326	324	166	278	432	507	314	368	417
HDPE (mixed)	259	345	356	447	226	211	373	257	233	364	428	683	565	524	617
Plastic Tubs & Lids		100	100	76	66	3	5	5	0	12	51	104	128	146	199
Film Plastic	40	40	40	(4)	(5)	(12)	7	26	0	8	55	148	137	51	56
Polystyrene	88	110	125	125	125	125	125	125	75	75	75	75	75	75	
Newspaper (ONP #1)	80	214	159	31	48	76	118	76	100	99	114	101	89	118	123
Corrugated (OCC)	94	159	214	97	73	99	112	55	106	89	114	95	80	131	138
Hardpack (OBB/OC)	38	159	120	5	17	20	65	38	63	62	75	68	50	89	93
Boxboard (OBB)										43	62	53	41	70	71
Polycoat Containers		189	198	99	26	24	83	57	58	64	67	66	59	84	84
<b>Composite Index</b>							<b>134</b>	<b>95</b>	<b>113</b>	<b>114</b>	<b>131</b>	<b>124</b>	<b>111</b>	<b>145</b>	<b>161</b>

☐ Indicates FOB the municipality

☑ Indicates delivery to mill or industry

#### Notes:

1) Prices are for baled post-consumer residential materials (except glass, which is loose).

2) Prices are compiled from a range of municipal programs across Ontario combined with information from industry representatives.

Prices may not be the same as actual prices being paid in any given program.

3) The CSR Composite Index is calculated using the overall composition of residential Blue Box material recovered and marketed in Ontario as reported from the approved 2006 WDO datacall with some additional allocations to material categories. It does not include mixed plastics. Mixed glass includes coloured glass. ONP8 includes a quantity of lower grade papers sold at lower prices. Composition figures are updated annually. Details available upon request.

For more information please contact:

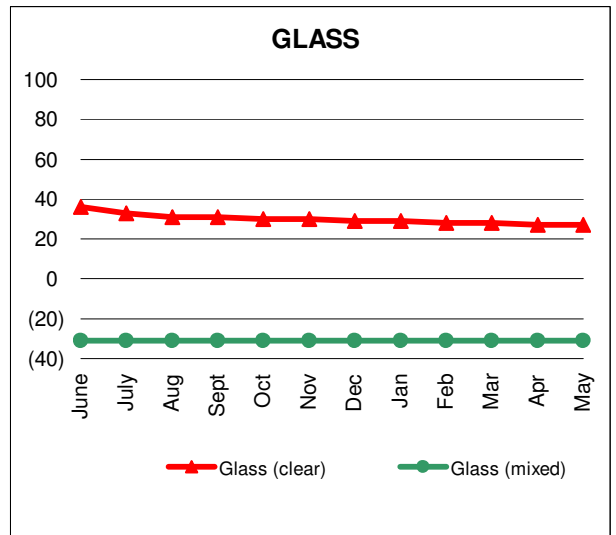
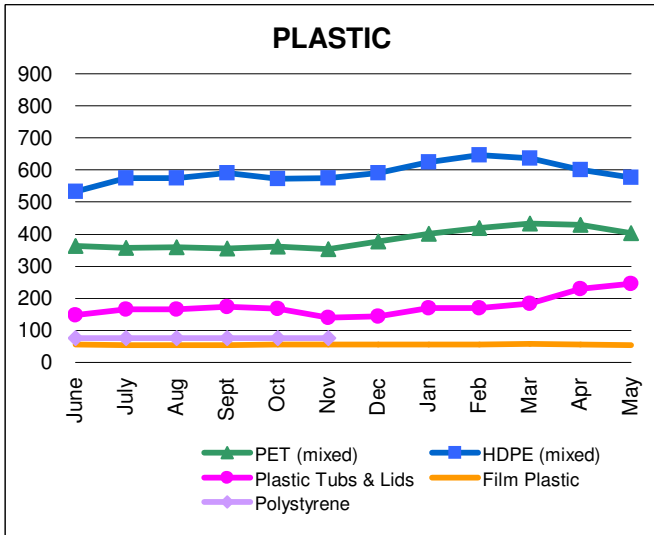
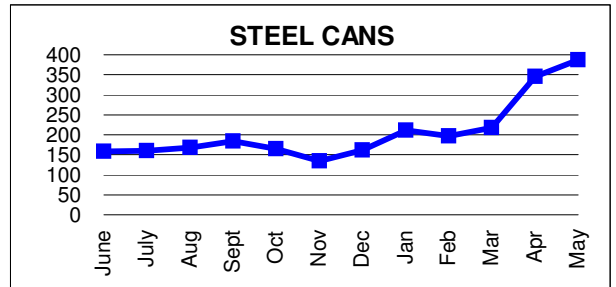
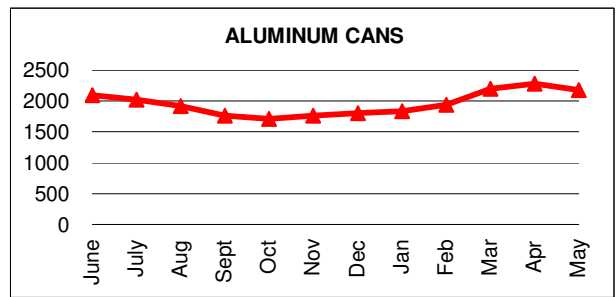
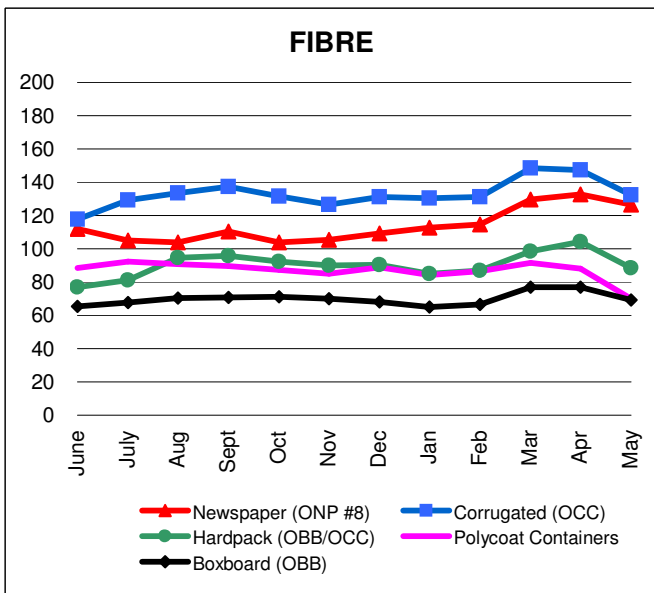
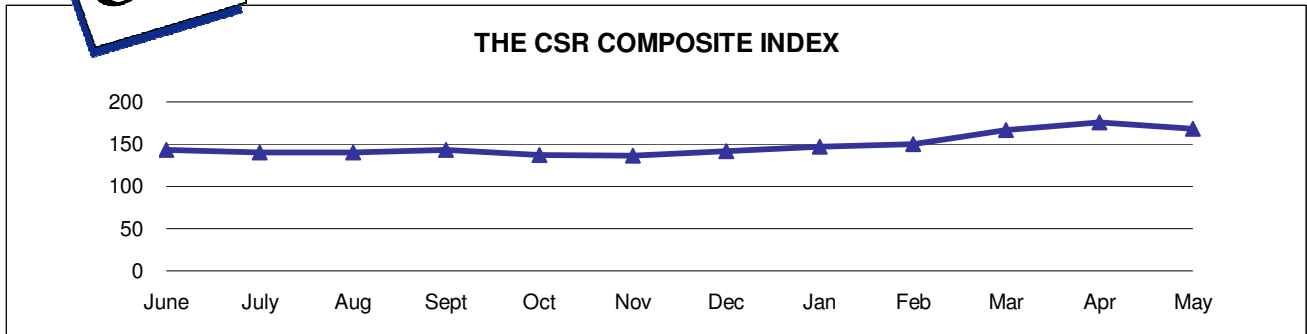
John Dixie at 647-777-3366 (Toll-Free: 888-277-2762, Ext. 3366) email: [jdixie@csr.org](mailto:jdixie@csr.org)  
 CSR, 26 Wellington Street East, Suite 601, Toronto, Ontario, M5E 1S2

Past editions of the Price Sheet are archived on CSR's website: [www.csr.org](http://www.csr.org)



# The Price Sheet

Ontario Monthly Averages from June 2007 to May 2008  
(CDN\$/Metric Tonne)

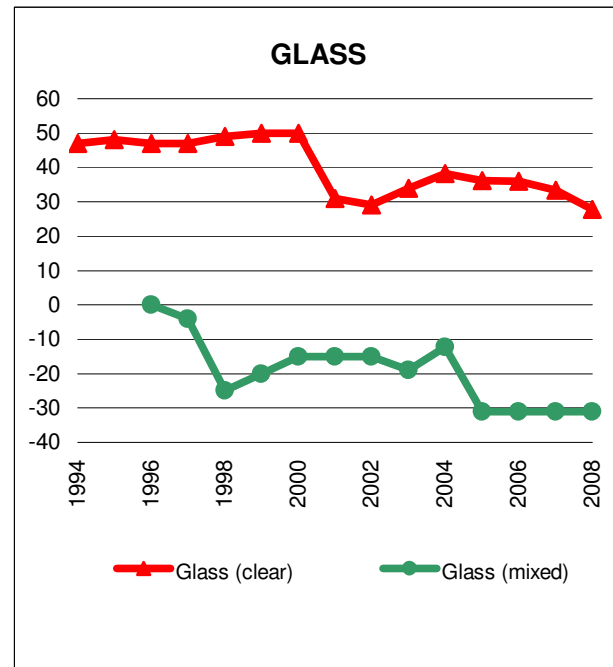
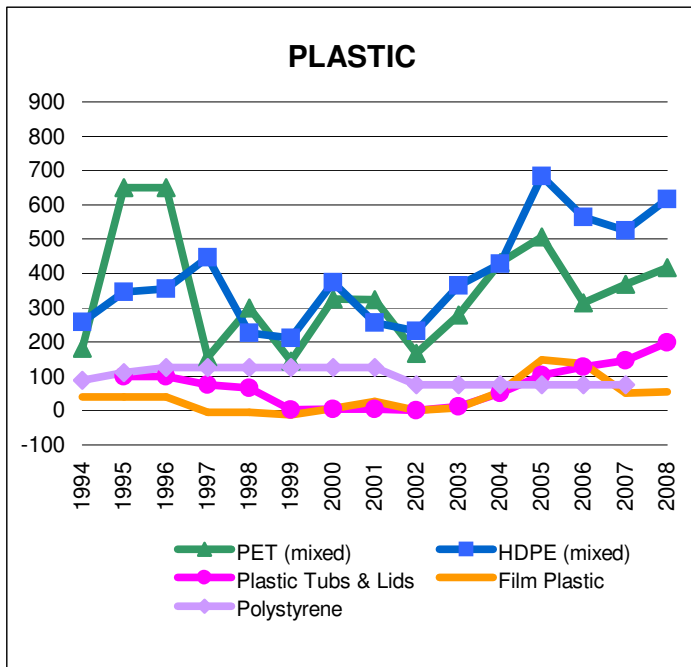
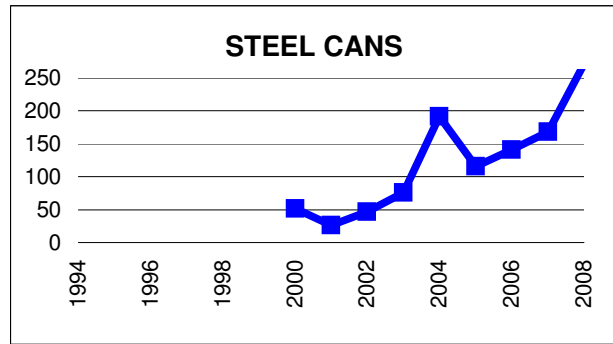
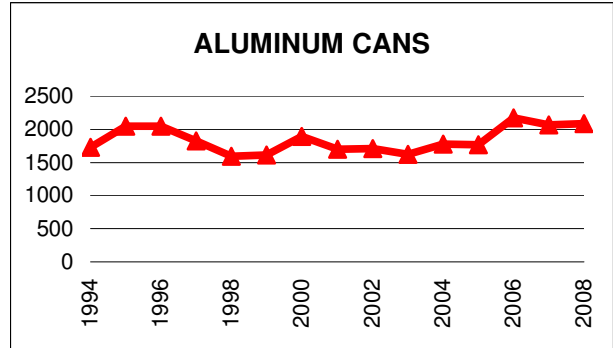
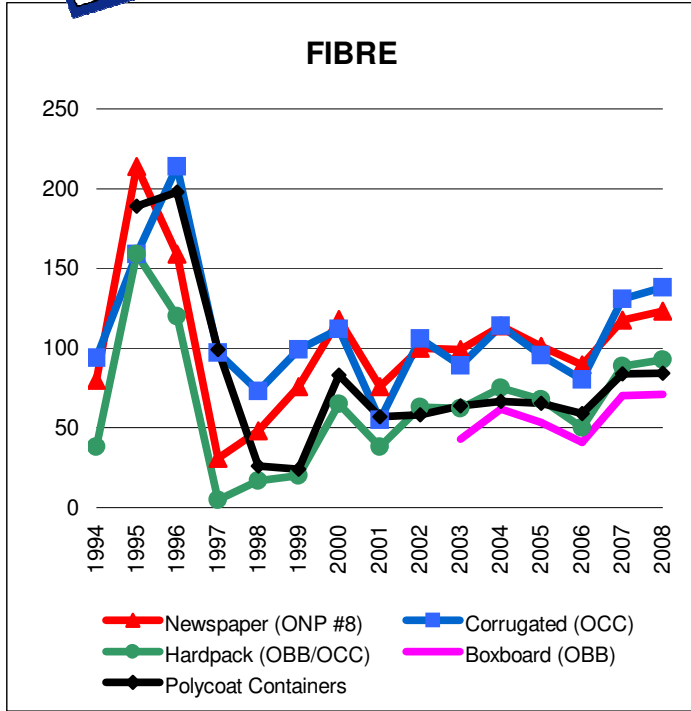


Graphs produced from Monthly Averages Table



# The Price Sheet

## Ontario Historical Yearly Averages (CDN\$/Metric Tonne)



Graphs produced from Yearly Averages Table