



The Price Sheet

Ontario Spot Market Price Trends for April 2008

MONTHLY AVERAGES (CDN\$/Metric Tonne)

	May 2007	June 2007	July 2007	Aug 2007	Sept 2007	Oct 2007	Nov 2007	Dec 2007	Jan 2008	Feb 2008	Mar 2008	Apr 2008
Aluminum Cans	2347	2093	2028	1921	1760	1709	1763	1806	1832	1938	2203	2282
Steel Cans	157	159	160	168	184	165	135	161	211	196	218	345
Glass (clear)	36	36	33	31	31	30	30	29	29	28	28	27
Glass (mixed)	(31)	(31)	(31)	(31)	(31)	(31)	(31)	(31)	(31)	(31)	(31)	(31)
PET (mixed)	375	364	357	358	356	362	353	378	401	419	434	430
HDPE (mixed)	501	533	574	575	591	572	574	591	624	647	637	601
Plastic Tubs & Lids	149	147	165	165	173	167	139	143	169	169	183	230
Film Plastic	42	56	54	54	54	56	56	56	56	55	57	56
Polystyrene	75	75	75	75	75	75	75	n/a	n/a	n/a	n/a	n/a
Newspaper (ONP #8)	133	112	105	104	110	104	105	109	113	115	130	133
Corrugated (OCC)	121	118	129	133	137	131	127	131	130	131	148	147
Hardpack (OBB/OCC)	76	77	81	95	96	93	90	90	85	87	98	104
Boxboard (OBB)	79	65	68	70	71	71	70	68	65	66	77	77
Polycoat Containers	88	88	92	91	89	87	85	89	84	87	92	88
Composite Index	159	143	140	140	143	137	136	142	147	150	167	176

YEARLY AVERAGES (CDN\$/Metric Tonne)

	1994	1995	1996	1997	1998	1999	2000	2001	2002	2003	2004	2005	2006	2007	2008
Aluminum Cans	1731	2045	2045	1827	1595	1608	1893	1700	1709	1619	1772	1763	2169	2065	2064
Steel Cans							52	26	47	76	191	116	141	168	243
Glass (clear)	47	48	47	47	49	50	50	31	29	34	38	36	36	33	28
Glass (mixed)			0	(4)	(25)	(20)	(15)	(15)	(15)	(19)	(12)	(31)	(31)	(31)	(31)
PET (mixed)	181	650	650	155	300	144	326	324	166	278	432	507	314	368	421
HDPE (mixed)	259	345	356	447	226	211	373	257	233	364	428	683	565	524	627
Plastic Tubs & Lids		100	100	76	66	3	5	5	0	12	51	104	128	146	188
Film Plastic	40	40	40	(4)	(5)	(12)	7	26	0	8	55	148	137	51	56
Polystyrene	88	110	125	125	125	125	125	125	75	75	75	75	75	75	n/a
Newspaper (ONP #8)	80	214	159	31	48	76	118	76	100	99	114	101	89	118	122
Corrugated (OCC)	94	159	214	97	73	99	112	55	106	89	114	95	80	131	139
Hardpack (OBB/OCC)	38	159	120	5	17	20	65	38	63	62	75	68	50	89	94
Boxboard (OBB)										43	62	53	41	70	71
Polycoat Containers		189	198	99	26	24	83	57	58	64	67	66	59	84	88
Composite Index							134	95	113	114	131	124	111	145	160

Indicates FOB the municipality

Indicates delivery to mill or industry

Notes:

- Prices are for baled post-consumer residential materials (except glass, which is loose).
- Prices are compiled from a range of municipal programs across Ontario combined with information from industry representatives. Prices may not be the same as actual prices being paid in any given program.
- The CSR Composite Index is calculated using the overall composition of residential Blue Box material recovered and marketed in Ontario as reported from the approved 2006 WDO datacall with some additional allocations to material categories. It does not include mixed plastics. Mixed glass includes coloured glass. ONP8 includes a quantity of lower grade papers sold at lower prices. Composition figures are updated annually. Details available upon request.

For more information please contact:

John Dixie at 647-777-3366 (Toll-Free: 888-277-2762, Ext. 3366) email: jdixie@csr.org
 CSR, 26 Wellington Street East, Suite 601, Toronto, Ontario, M5E 1S2

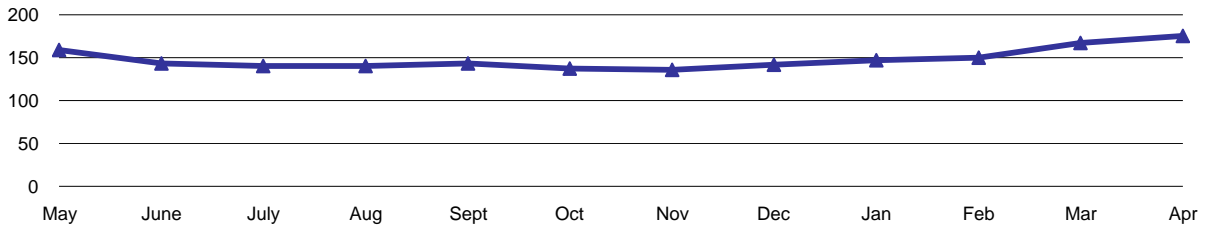
Past editions of the Price Sheet are archived on CSR's website: www.csr.org



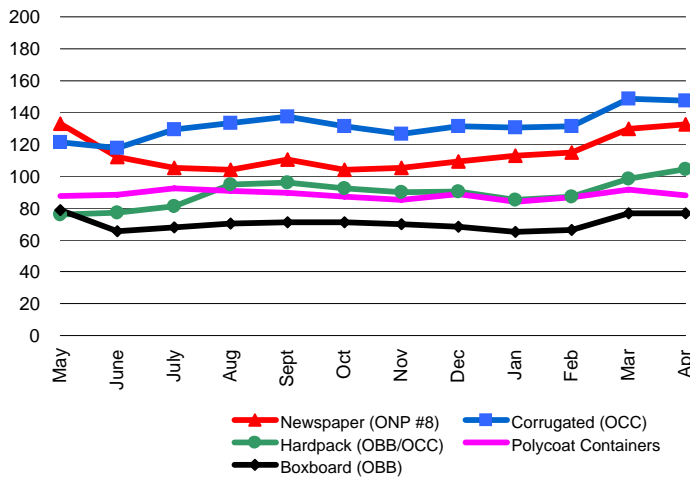
The Price Sheet

Ontario Monthly Averages from May 2007 to April 2008
(CDN\$/Metric Tonne)

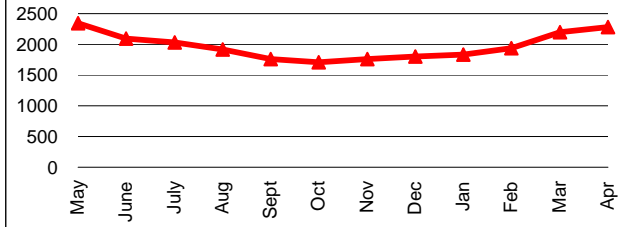
THE CSR COMPOSITE INDEX



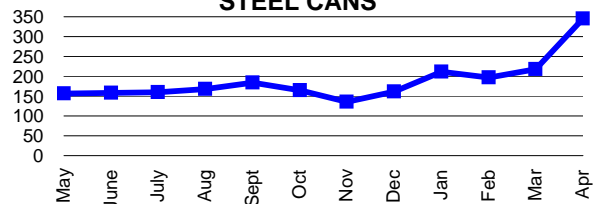
FIBRE



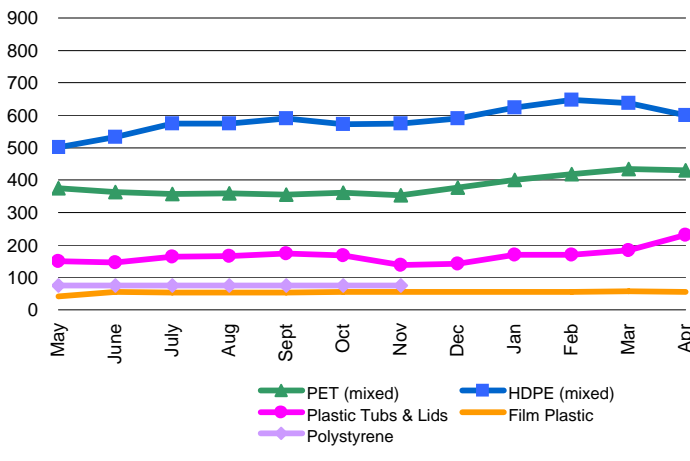
ALUMINUM CANS



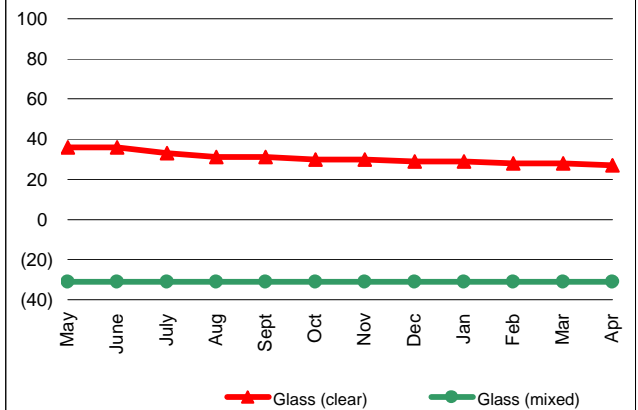
STEEL CANS



PLASTIC



GLASS

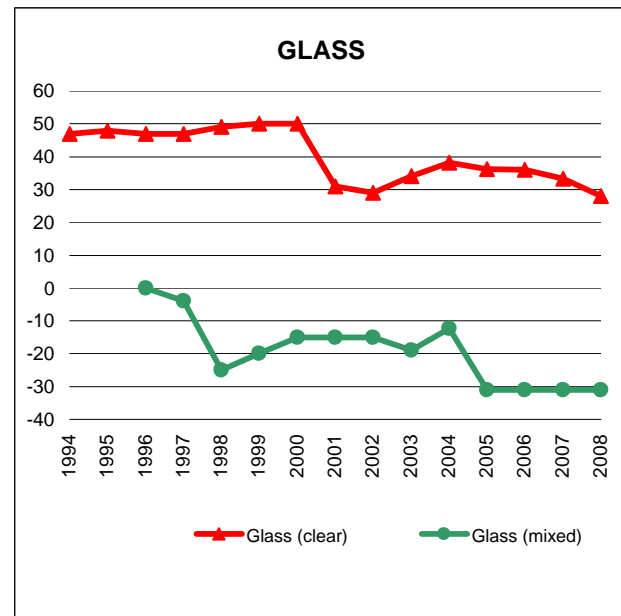
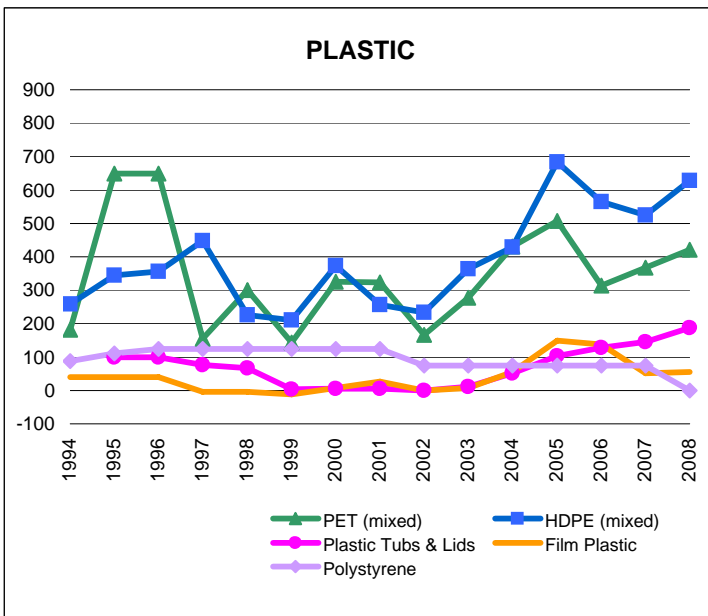
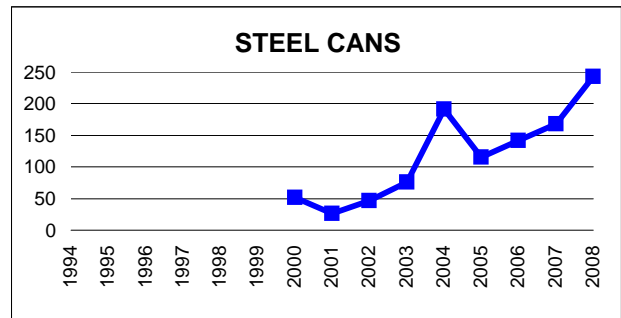
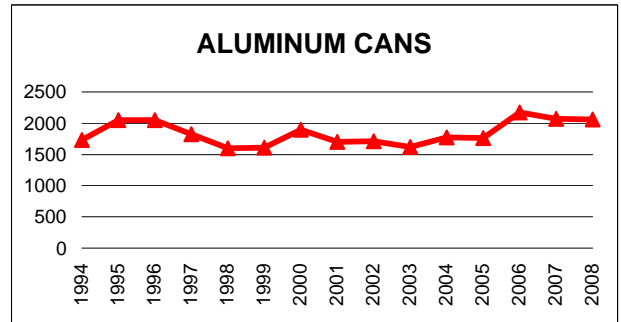
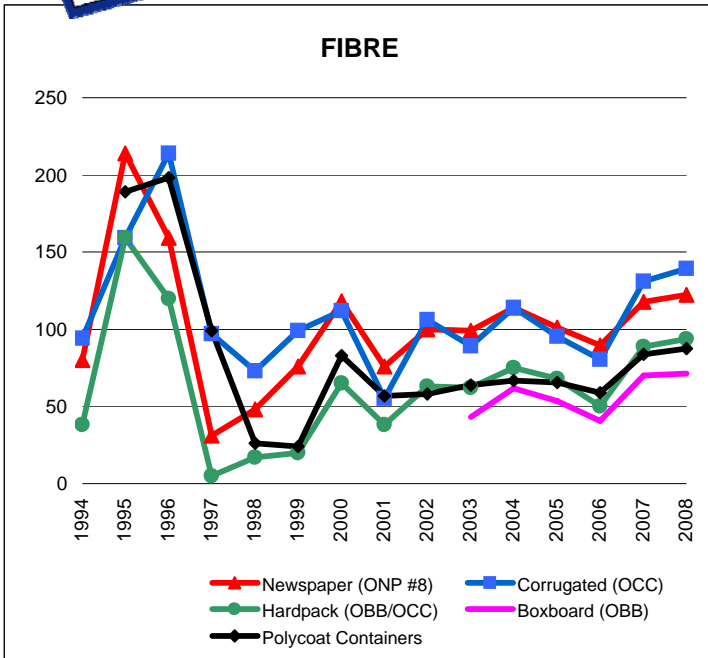


Graphs produced from Monthly Averages Table



The Price Sheet

Ontario Historical Yearly Averages (CDN\$/Metric Tonne)



Graphs produced from Yearly Averages Table