



The Price Sheet

Ontario Spot Market Price Trends for March 2008

MONTHLY AVERAGES (CDN\$/Metric Tonne)

	Apr 2007	May 2007	June 2007	July 2007	Aug 2007	Sept 2007	Oct 2007	Nov 2007	Dec 2007	Jan 2008	Feb 2008	Mar 2008
Aluminum Cans	2383	2347	2093	2028	1921	1760	1709	1763	1806	1832	1938	2203
Steel Cans	201	157	159	160	168	184	165	135	161	211	196	218
Glass (clear)	36	36	36	33	31	31	30	30	29	29	28	28
Glass (mixed)	(31)	(31)	(31)	(31)	(31)	(31)	(31)	(31)	(31)	(31)	(31)	(31)
PET (mixed)	393	375	364	357	358	356	362	353	378	401	419	434
HDPE (mixed)	492	501	533	574	575	591	572	574	591	624	647	637
Plastic Tubs & Lids	155	149	147	165	165	173	167	139	143	169	169	183
Film Plastic	42	42	56	54	54	54	56	56	56	56	55	57
Polystyrene	75	75	75	75	75	75	75	75	75	75	75	75
Newspaper (ONP #8)	150	133	112	105	104	110	104	105	109	113	115	130
Corrugated (OCC)	152	121	118	129	133	137	131	127	131	130	131	148
Hardpack (OBB/OCC)	110	76	77	81	95	96	93	90	90	85	87	98
Boxboard (OBB)	83	79	65	68	70	71	71	70	68	65	66	77
Polycoat Containers	75	88	88	92	91	89	87	85	89	84	87	92
Composite Index	178	159	143	140	140	143	137	136	142	147	150	167

YEARLY AVERAGES (CDN\$/Metric Tonne)

	1994	1995	1996	1997	1998	1999	2000	2001	2002	2003	2004	2005	2006	2007	2008
Aluminum Cans	1731	2045	2045	1827	1595	1608	1893	1700	1709	1619	1772	1763	2169	2065	1991
Steel Cans							52	26	47	76	191	116	141	168	208
Glass (clear)	47	48	47	47	49	50	50	31	29	34	38	36	36	33	28
Glass (mixed)			0	(4)	(25)	(20)	(15)	(15)	(15)	(19)	(12)	(31)	(31)	(31)	(31)
PET (mixed)	181	650	650	155	300	144	326	324	166	278	432	507	314	368	418
HDPE (mixed)	259	345	356	447	226	211	373	257	233	364	428	683	565	524	636
Plastic Tubs & Lids		100	100	76	66	3	5	5	0	12	51	104	128	146	174
Film Plastic	40	40	40	(4)	(5)	(12)	7	26	0	8	55	148	137	51	56
Polystyrene	88	110	125	125	125	125	125	125	75	75	75	75	75	75	n/a
Newspaper (ONP #8)	80	214	159	31	48	76	118	76	100	99	114	101	89	118	119
Corrugated (OCC)	94	159	214	97	73	99	112	55	106	89	114	95	80	131	137
Hardpack (OBB/OCC)	38	159	120	5	17	20	65	38	63	62	75	68	50	89	90
Boxboard (OBB)										43	62	53	41	70	69
Polycoat Containers		189	198	99	26	24	83	57	58	64	67	66	59	84	87
Composite Index							134	95	113	114	131	124	111	145	155

☐ Indicates FOB the municipality

☐ Indicates delivery to mill or industry

Notes:

- Prices are for baled post-consumer residential materials (except glass, which is loose).
- Prices are compiled from a range of municipal programs across Ontario combined with information from industry representatives. Prices may not be the same as actual prices being paid in any given program.
- The CSR Composite Index is calculated using the overall composition of residential Blue Box material recovered and marketed in Ontario as reported from the approved 2005 WDO datacall with some additional allocations to material categories. It does not include mixed plastics. Mixed glass includes coloured glass. ONP8 includes a quantity of lower grade papers sold at lower prices. Composition figures are updated annually. Details available upon request.

For more information please contact:

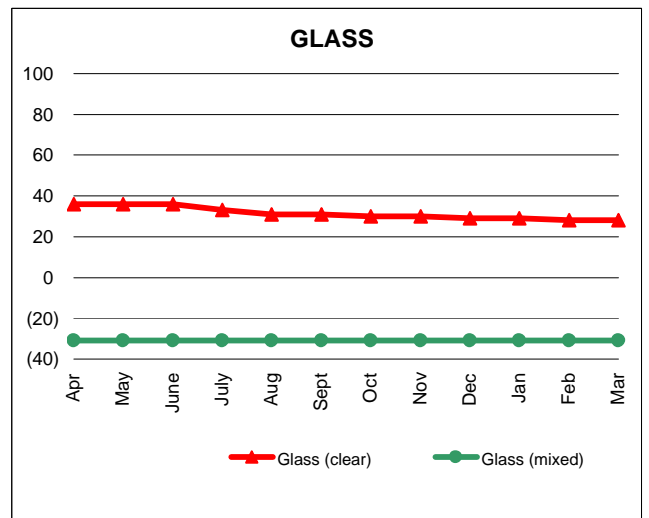
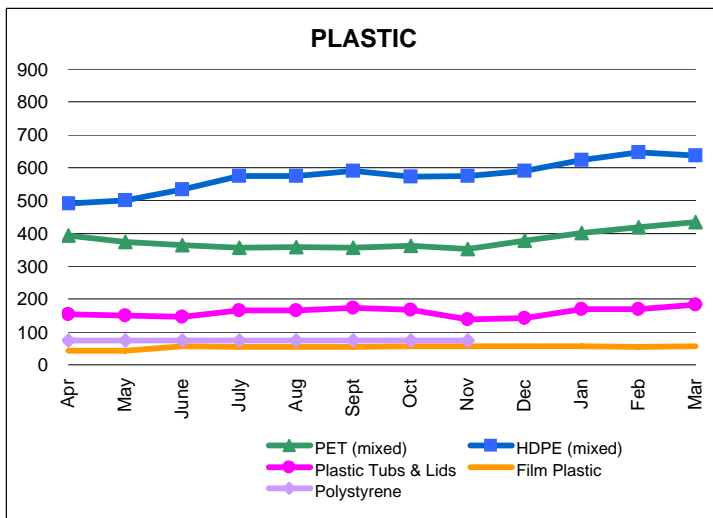
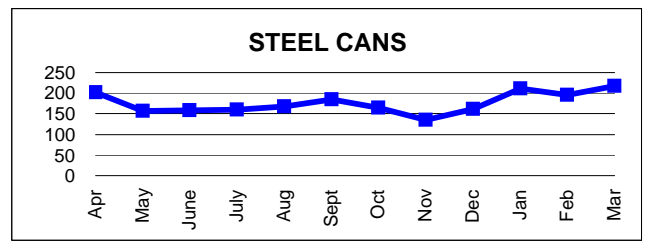
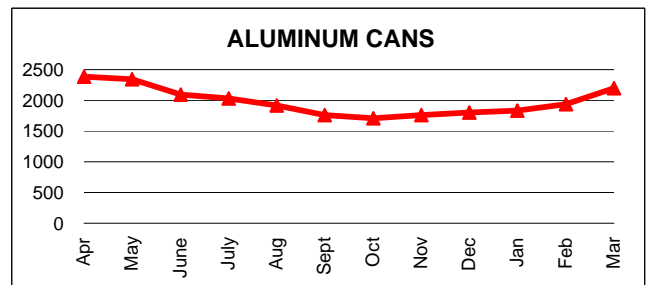
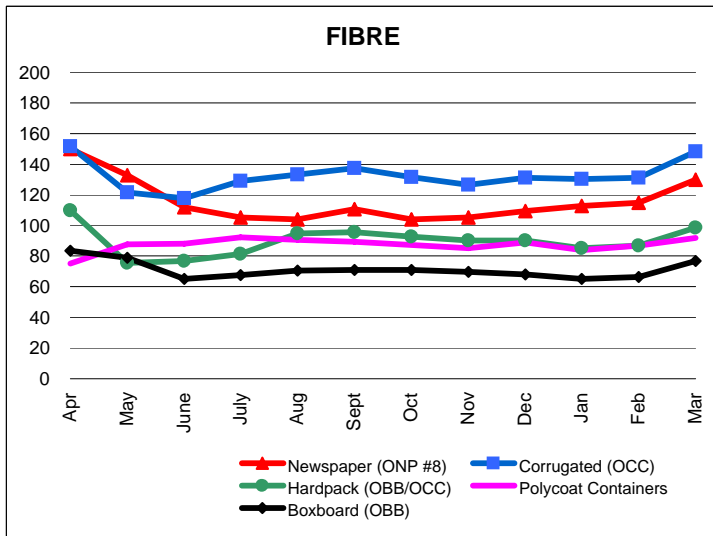
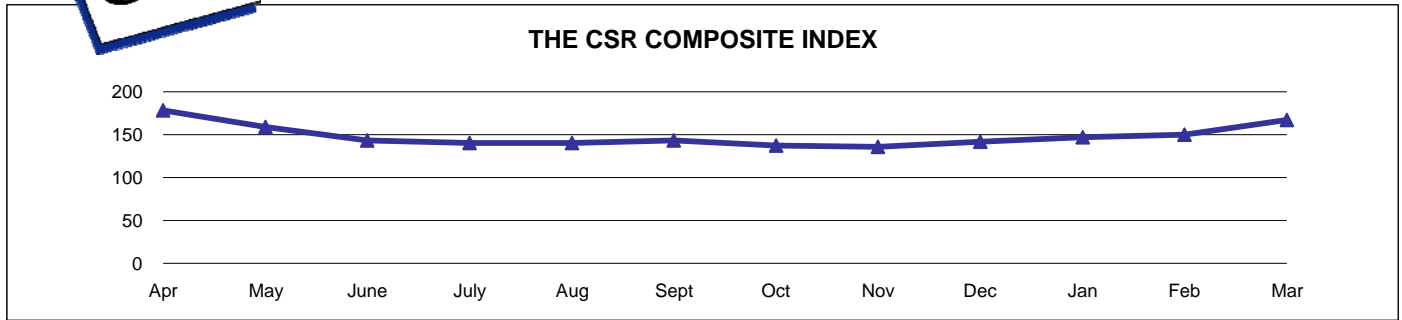
John Dixie at 647-777-3366 (Toll-Free: 888-277-2762, Ext. 3366) email: jdixie@csr.org
 CSR, 26 Wellington Street East, Suite 601, Toronto, Ontario, M5E 1S2

Past editions of the Price Sheet are archived on CSR's website: www.csr.org



The Price Sheet

Ontario Monthly Averages from April 2007 to March 2008
(CDN\$/Metric Tonne)

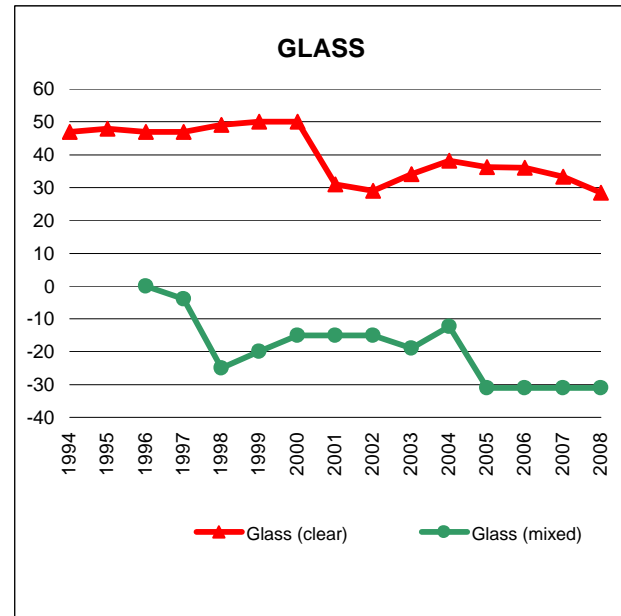
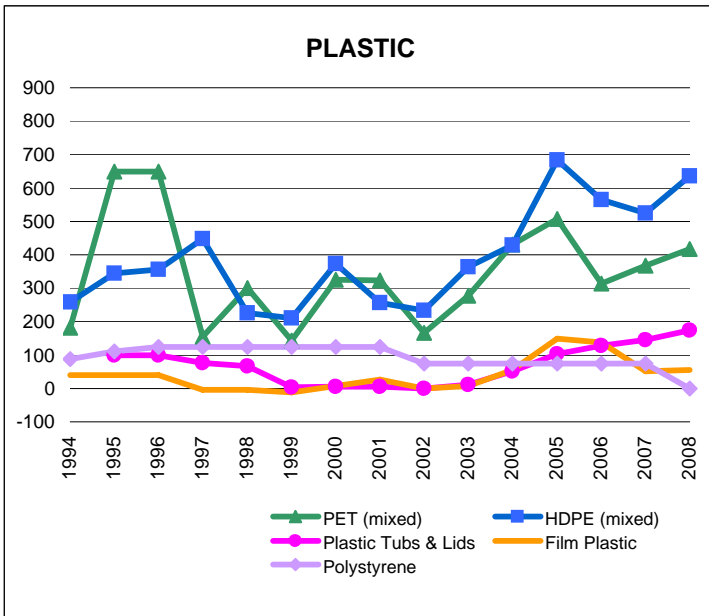
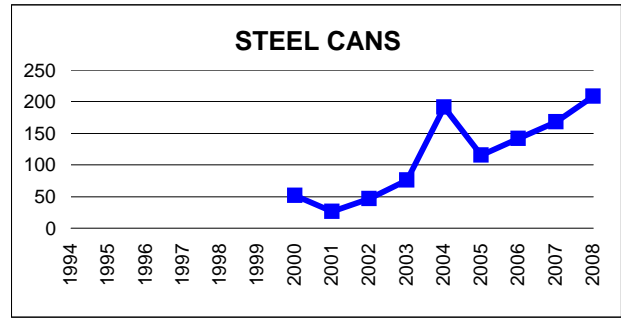
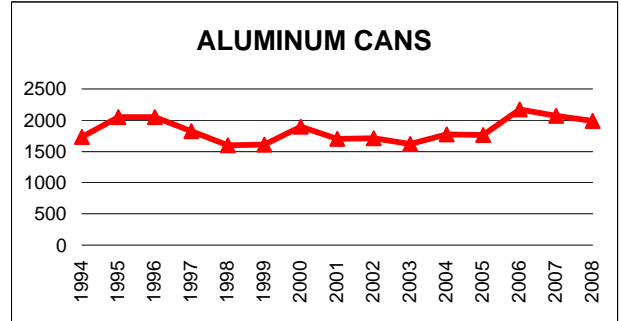
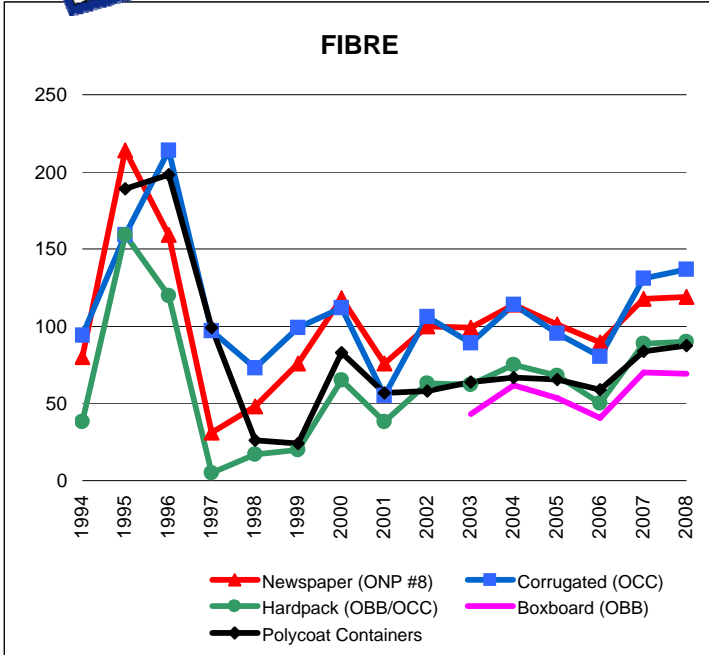


Graphs produced from Monthly Averages Table



The Price Sheet

Ontario Historical Yearly Averages (CDN\$/Metric)



Graphs produced from Yearly Averages Table



The Price Sheet

National Market Prices for March 2008

	QUARTERLY AVERAGES (CDN\$/Metric Tonne)											
	Western Canada				Central (Ontario)				Eastern Canada			
	Q2	Q3	Q4	Q1	Q2	Q3	Q4	Q1	Q2	Q3	Q4	Q1
	Jun 07	Sept 07	Dec 07	Mar 08	Jun 07	Sept 07	Dec 07	Mar 08	Jun 07	Sept 07	Dec 07	Mar 08
Aluminum Cans	2046	1701	1710	2120	2093	1760	1806	2203	2026	1773	1781	2240
Steel Cans	n/a	n/a	n/a	n/a	159	184	161	218	125	139	104	172
Glass (clear/flint)	n/a	n/a	n/a	n/a	36	36	29	28	n/a	n/a	n/a	n/a
Glass (coloured/mixed)	n/a	n/a	n/a	n/a	(31)	(31)	(31)	(31)	n/a	n/a	n/a	n/a
PET (mixed)	384	388	434	479	364	356	378	434	379	379	406	435
HDPE (mixed)	n/a	535	559	501	533	591	591	637	482	552	598	577
HDPE (natural)	662	700	664	657	n/a	n/a	n/a	n/a	n/a	n/a	n/a	n/a
ONP (#8)	n/a	n/a	n/a	n/a	112	110	109	130	108	110	110	n/a
ONP (#6)	n/a	n/a	n/a	n/a	n/a	n/a	n/a	n/a	84	93	93	n/a
OCC	n/a	n/a	n/a	n/a	118	137	131	148	95	115	119	n/a
Residential (soft) Mix ⁴	n/a	n/a	n/a	n/a	77	96	90	98	n/a	n/a	n/a	n/a
Polycoat Containers	n/a	n/a	n/a	n/a	88	89	89	92	n/a	n/a	n/a	n/a

Indicates FOB the municipality
 Indicates delivery to mill or industry

Notes:

- 1) Prices are for baled post-consumer residential materials (except glass, which is loose).
- 2) Prices are compiled from a range of municipal programs across Canada combined with information from industry representatives. Prices may not be the same as actual prices being paid in any given program.
- 3) Western Canada: BC, Alberta, Saskatchewan, Manitoba. Central Canada: Ontario. Eastern Canada: Quebec, PEI, Nova Scotia, New Brunswick, Newfoundland
- 4) Pricing for Central Canada (Ontario) is for OBB/OCC hard pack.

For more information please contact:

John Dixie at 647-777-3366 (Toll-Free: 888-277-2762, Ext. 3366) email: jdixie@csr.org

CSR, 26 Wellington Street East, Suite 601, Toronto, Ontario, M5E 1S2

website: www.csr.org