



The Price Sheet

Spot Market Price Trends as of Dec 19, 2007

MONTHLY AVERAGES (CDN\$/Metric Tonne)

	Jan 2007	Feb 2007	Mar 2007	Apr 2007	May 2007	June 2007	July 2007	Aug 2007	Sept 2007	Oct 2007	Nov 2007	Dec 2007
Aluminum Cans	2262	2376	2335	2383	2347	2093	2028	1921	1760	1709	1763	1806
Steel Cans	134	170	223	201	157	159	160	168	184	165	135	161
Glass (clear)	36	36	36	36	36	36	33	31	31	30	30	29
Glass (mixed)	(31)	(31)	(31)	(31)	(31)	(31)	(31)	(31)	(31)	(31)	(31)	(31)
PET (mixed)	339	374	402	393	375	364	357	358	356	362	353	378
HDPE (mixed)	393	433	465	492	501	533	574	575	591	572	574	591
Plastic Tubs & Lids	107	107	132	155	149	147	165	165	173	167	139	143
Film Plastic	48	42	47	42	42	56	54	54	54	56	56	56
Polystyrene	75	75	75	75	75	75	75	75	75	75	75	n/a
Newspaper (ONP #8)	99	124	157	150	133	112	105	104	110	104	105	109
Corrugated (OCC)	82	116	193	152	121	118	129	133	137	131	127	131
Hardpack (OBB/OCC)	56	70	130	110	76	77	81	95	96	93	90	90
Boxboard (OBB)	46	64	87	83	79	65	68	70	71	71	70	68
Polycoat Containers	70	67	83	75	88	88	92	91	89	87	85	89
Composite Index	116	138	172	178	159	143	140	140	143	137	136	142

YEARLY AVERAGES (CDN\$/Metric Tonne)

	1994	1995	1996	1997	1998	1999	2000	2001	2002	2003	2004	2005	2006	2007
Aluminum Cans	1731	2045	2045	1827	1595	1608	1893	1700	1709	1619	1772	1763	2169	2065
Steel Cans							52	26	47	76	191	116	141	168
Glass (clear)	47	48	47	47	49	50	50	31	29	34	38	36	36	33
Glass (mixed)			0	(4)	(25)	(20)	(15)	(15)	(15)	(19)	(12)	(31)	(31)	(31)
PET (mixed)	181	650	650	155	300	144	326	324	166	278	432	507	314	368
HDPE (mixed)	259	345	356	447	226	211	373	257	233	364	428	683	565	524
Plastic Tubs & Lids		100	100	76	66	3	5	5	0	12	51	104	128	146
Film Plastic	40	40	40	(4)	(5)	(12)	7	26	0	8	55	148	137	51
Polystyrene	88	110	125	125	125	125	125	125	75	75	75	75	75	75
Newspaper (ONP #8)	80	214	159	31	48	76	118	76	100	99	114	101	89	118
Corrugated (OCC)	94	159	214	97	73	99	112	55	106	89	114	95	80	131
Hardpack (OBB/OCC)	38	159	120	5	17	20	65	38	63	62	75	68	50	89
Boxboard (OBB)										43	62	53	41	70
Polycoat Containers		189	198	99	26	24	83	57	58	64	67	66	59	84
Composite Index							134	95	113	114	131	124	111	145

☐ Indicates FOB the municipality

▨ Indicates delivery to mill or industry

Notes:

- Prices are for baled post-consumer residential materials (except glass, which is loose).
- Prices are compiled from a range of municipal programs across Ontario combined with information from industry representatives.
Prices may not be the same as actual prices being paid in any given program.
- The CSR Composite Index is calculated using the overall composition of residential Blue Box material recovered and marketed in Ontario as reported from the approved 2005 WDO datacall with some additional allocations to material categories. It does not include mixed plastics. Mixed glass includes coloured glass. ONP8 includes a quantity of lower grade papers sold at lower prices. Composition figures are updated annually. Details available upon request.

For more information please contact:

John Dixie at 647-777-3366 (Toll-Free: 888-277-2762, Ext. 3366) email: jdixie@csr.org

CSR, 26 Wellington Street East, Suite 601, Toronto, Ontario, M5E 1S2

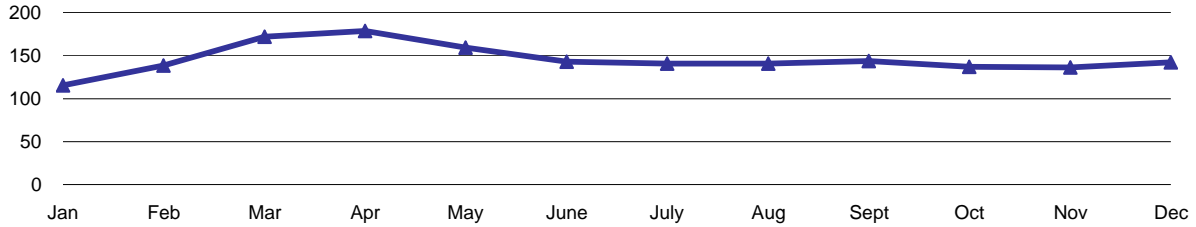
website: www.csr.org



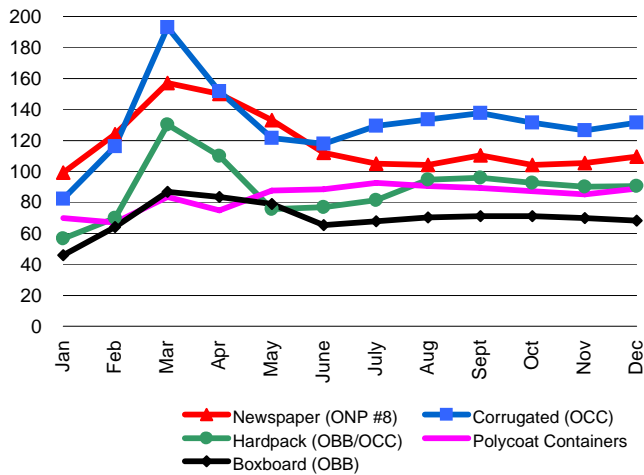
The Price Sheet

Monthly Averages from Jan 2007 to Dec 2007
(CDN\$/Metric Tonne)

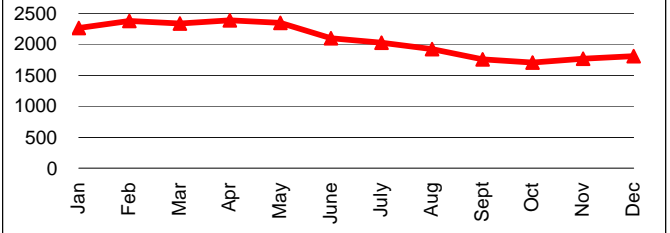
THE CSR COMPOSITE INDEX



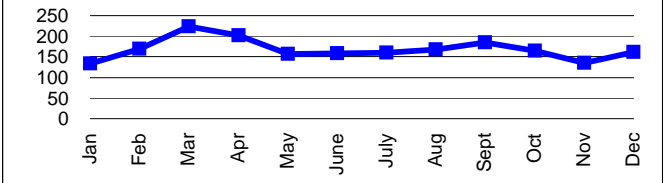
FIBRE



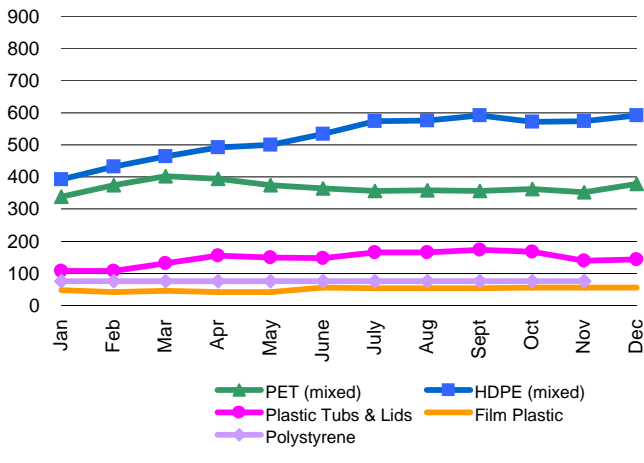
ALUMINUM CANS



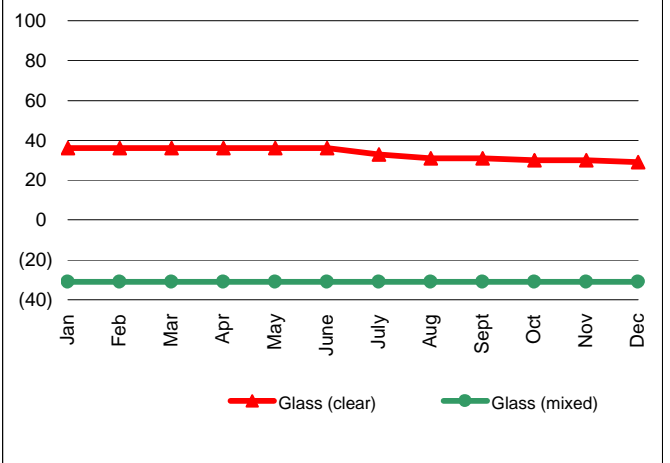
STEEL CANS



PLASTIC



GLASS

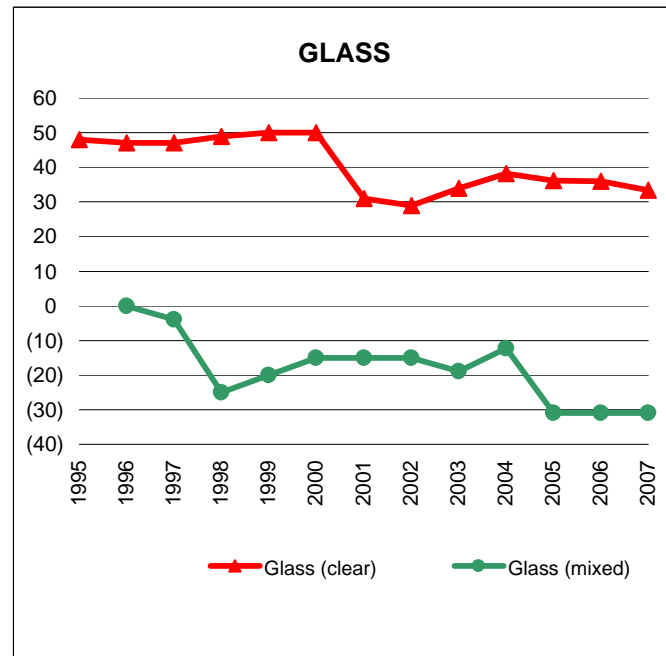
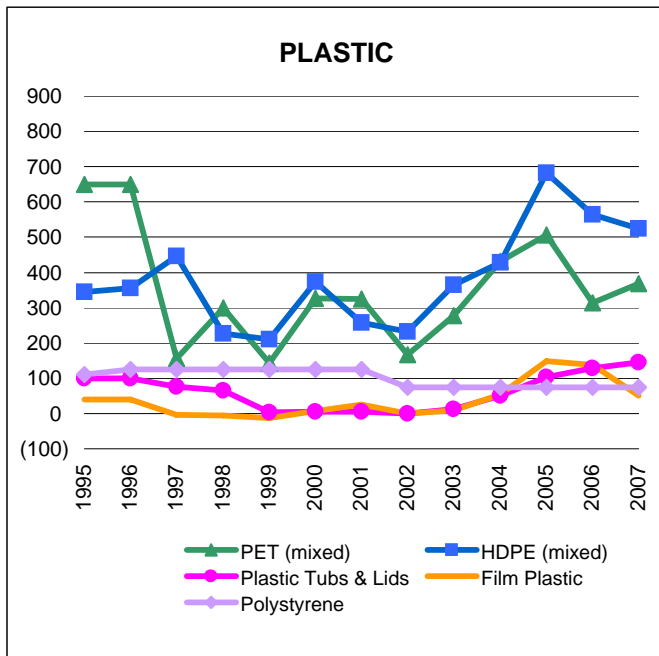
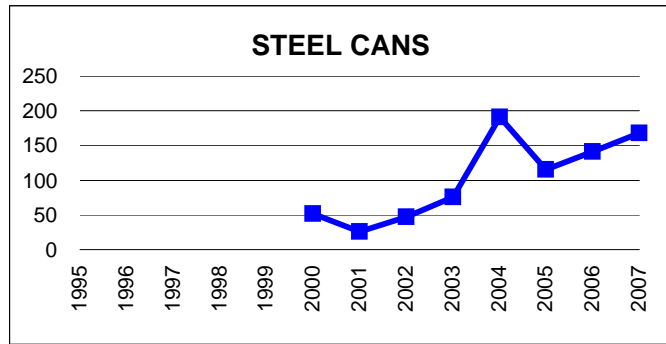
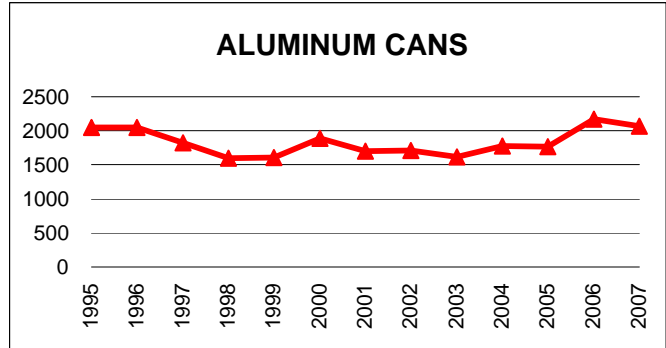
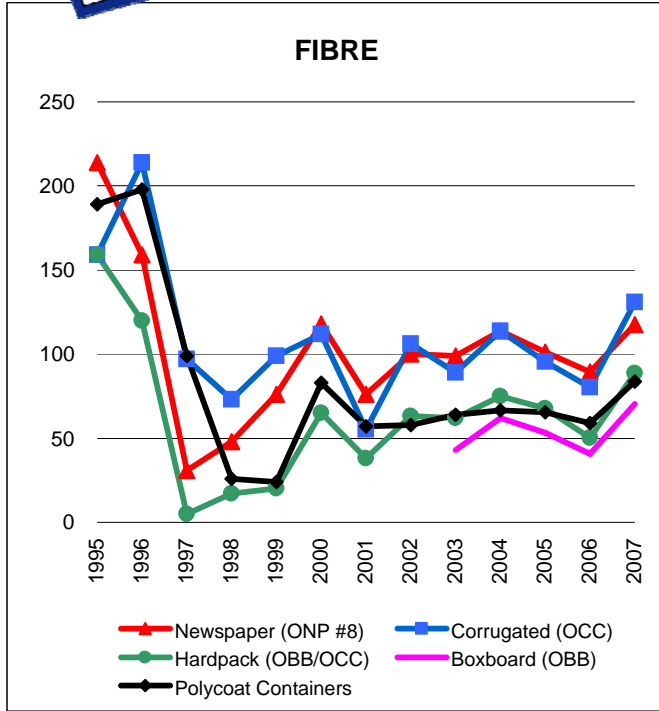


Graphs produced from Monthly Averages Table



The Price Sheet

Historical Yearly Averages (CDN\$/Metric Tonne)



Graphs produced from Yearly Averages Table



The Price Sheet

National Market Prices as of Dec 19, 2007

	QUARTERLY AVERAGES (CDN\$/Metric Tonne)											
	Western Canada				Central (Ontario)				Eastern Canada			
	Q1	Q2	Q3	Q4	Q1	Q2	Q3	Q4	Q1	Q2	Q3	Q4
	Mar 07	Jun 07	Sept 07	Dec 07	Mar 07	Jun 07	Sept 07	Dec 07	Mar 07	Jun 07	Sept 07	Dec 07
Aluminum Cans	2364	2046	1701	1710	2335	2093	1760	1806	2409	2026	1773	1781
Steel Cans	n/a	n/a	n/a	n/a	223	159	184	161	132	125	139	104
Glass (clear/flint)	n/a	n/a	n/a	n/a	36	36	36	29	n/a	n/a	n/a	n/a
Glass (coloured/mixed)	n/a	n/a	n/a	n/a	(31)	(31)	(31)	(31)	n/a	n/a	n/a	n/a
PET (mixed)	457	384	388	434	402	364	356	378	410	379	379	406
HDPE (mixed)	n/a	n/a	535	559	465	533	591	591	491	482	552	598
HDPE (natural)	626	662	700	664	n/a	n/a	n/a	n/a	n/a	n/a	n/a	n/a
ONP (#8)	n/a	n/a	n/a	n/a	157	112	110	109	115	108	110	110
ONP (#6)	n/a	n/a	n/a	n/a	n/a	n/a	n/a	n/a	84	84	93	93
OCC	n/a	n/a	n/a	n/a	193	118	137	131	149	95	115	119
Residential (soft) Mix ⁴	n/a	n/a	n/a	n/a	130	77	96	90	n/a	n/a	n/a	n/a
Polycoat Containers	n/a	n/a	n/a	n/a	83	88	89	89	n/a	n/a	n/a	n/a

Indicates FOB the municipality
 Indicates delivery to mill or industry

Notes:

- 1) Prices are for baled post-consumer residential materials (except glass, which is loose).
- 2) Prices are compiled from a range of municipal programs across Canada combined with information from industry representatives. Prices may not be the same as actual prices being paid in any given program.
- 3) Western Canada: BC, Alberta, Saskatchewan, Manitoba. Central Canada: Ontario. Eastern Canada: Quebec, PEI, Nova Scotia, New Brunswick, Newfoundland
- 4) Pricing for Central Canada (Ontario) is for OBB/OCC hard pack.

For more information please contact:

John Dixie at 647-777-3366 (Toll-Free: 888-277-2762, Ext. 3366) email: jdixie@csr.org

CSR, 26 Wellington Street East, Suite 601, Toronto, Ontario, M5E 1S2

website: www.csr.org