



# The Price Sheet

Spot Market Price Trends as of Nov 19, 2007

## MONTHLY AVERAGES (CDN\$/Metric Tonne)

	Dec 2006	Jan 2007	Feb 2007	Mar 2007	Apr 2007	May 2007	June 2007	July 2007	Aug 2007	Sept 2007	Oct 2007	Nov 2007
Aluminum Cans	2207	2262	2376	2335	2383	2347	2093	2028	1921	1760	1709	1763
Steel Cans	123	134	170	223	201	157	159	160	168	184	165	135
Glass (clear)	36	36	36	36	36	36	36	33	31	31	30	30
Glass (mixed)	(31)	(31)	(31)	(31)	(31)	(31)	(31)	(31)	(31)	(31)	(31)	(31)
PET (mixed)	311	339	374	402	393	375	364	357	358	356	362	353
HDPE (mixed)	387	393	433	465	492	501	533	574	575	591	572	574
Plastic Tubs & Lids	109	107	107	132	155	149	147	165	165	173	167	139
Film Plastic	54	48	42	47	42	42	56	54	54	54	56	56
Polystyrene	75	75	75	75	75	75	75	75	75	75	75	75
Newspaper (ONP #8)	99	99	124	157	150	133	112	105	104	110	104	105
Corrugated (OCC)	81	82	116	193	152	121	118	129	133	137	131	127
Hardpack (OBB/OCC)	50	56	70	130	110	76	77	81	95	96	93	90
Boxboard (OBB)	42	46	64	87	83	79	65	68	70	71	71	70
Polycoat Containers	73	70	67	83	75	88	88	92	91	89	87	85
<b>Composite Index</b>	<b>113</b>	<b>116</b>	<b>138</b>	<b>172</b>	<b>178</b>	<b>159</b>	<b>143</b>	<b>140</b>	<b>140</b>	<b>143</b>	<b>137</b>	<b>136</b>

## YEARLY AVERAGES (CDN\$/Metric Tonne)

	1994	1995	1996	1997	1998	1999	2000	2001	2002	2003	2004	2005	2006	2007
Aluminum Cans	1731	2045	2045	1827	1595	1608	1893	1700	1709	1619	1772	1763	2169	2089
Steel Cans							52	26	47	76	191	116	141	169
Glass (clear)	47	48	47	47	49	50	50	31	29	34	38	36	36	34
Glass (mixed)			0	(4)	(25)	(20)	(15)	(15)	(15)	(19)	(12)	(31)	(31)	(31)
PET (mixed)	181	650	650	155	300	144	326	324	166	278	432	507	314	367
HDPE (mixed)	259	345	356	447	226	211	373	257	233	364	428	683	565	518
Plastic Tubs & Lids		100	100	76	66	3	5	5	0	12	51	104	128	146
Film Plastic	40	40	40	(4)	(5)	(12)	7	26	0	8	55	148	137	50
Polystyrene	88	110	125	125	125	125	125	125	75	75	75	75	75	75
Newspaper (ONP #8)	80	214	159	31	48	76	118	76	100	99	114	101	89	118
Corrugated (OCC)	94	159	214	97	73	99	112	55	106	89	114	95	80	131
Hardpack (OBB/OCC)	38	159	120	5	17	20	65	38	63	62	75	68	50	88
Boxboard (OBB)										43	62	53	41	70
Polycoat Containers		189	198	99	26	24	83	57	58	64	67	66	59	83
<b>Composite Index</b>							<b>134</b>	<b>95</b>	<b>113</b>	<b>114</b>	<b>131</b>	<b>124</b>	<b>111</b>	<b>146</b>

Indicates FOB the municipality

Indicates delivery to mill or industry

Notes:

- Prices are for baled post-consumer residential materials (except glass, which is loose).
- Prices are compiled from a range of municipal programs across Ontario combined with information from industry representatives.  
Prices may not be the same as actual prices being paid in any given program.
- The CSR Composite Index is calculated using the overall composition of residential Blue Box material recovered and marketed in Ontario as reported from the approved 2005 WDO datacall with some additional allocations to material categories. It does not include mixed plastics. Mixed glass includes coloured glass. ONP8 includes a quantity of lower grade papers sold at lower prices. Composition figures are updated annually. Details available upon request.

For more information please contact:

John Dixie at 647-777-3366 (Toll-Free: 888-277-2762, Ext. 3366) email: [jdixie@csr.org](mailto:jdixie@csr.org)

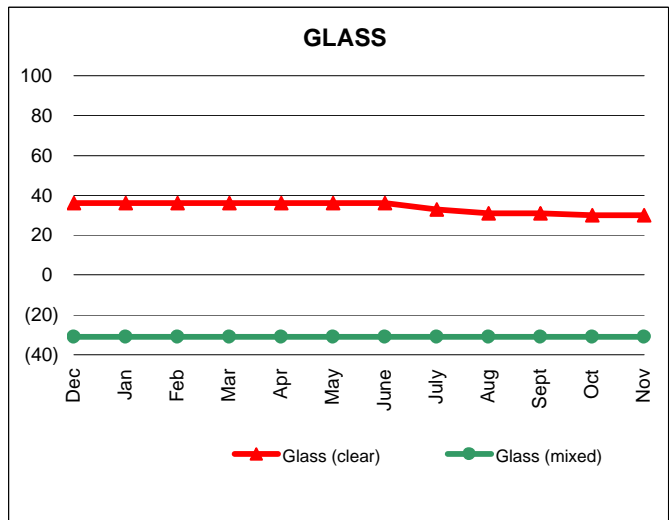
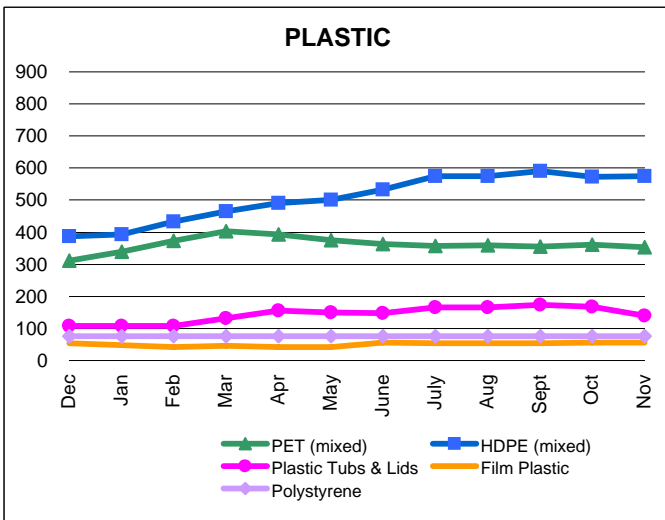
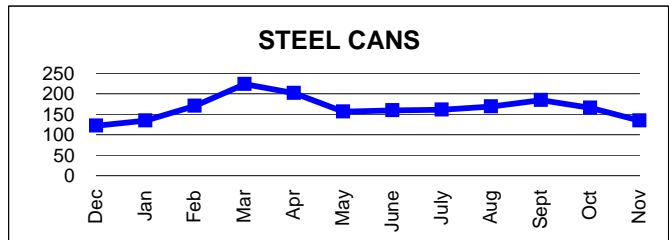
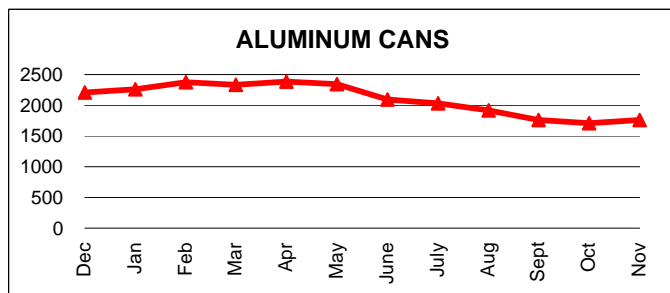
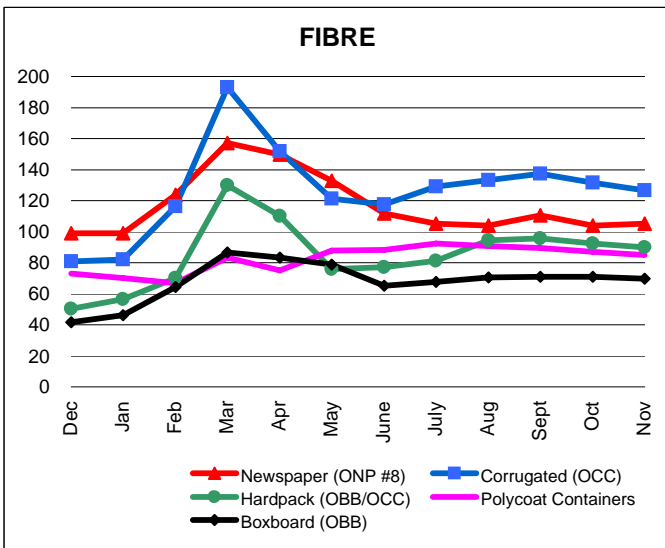
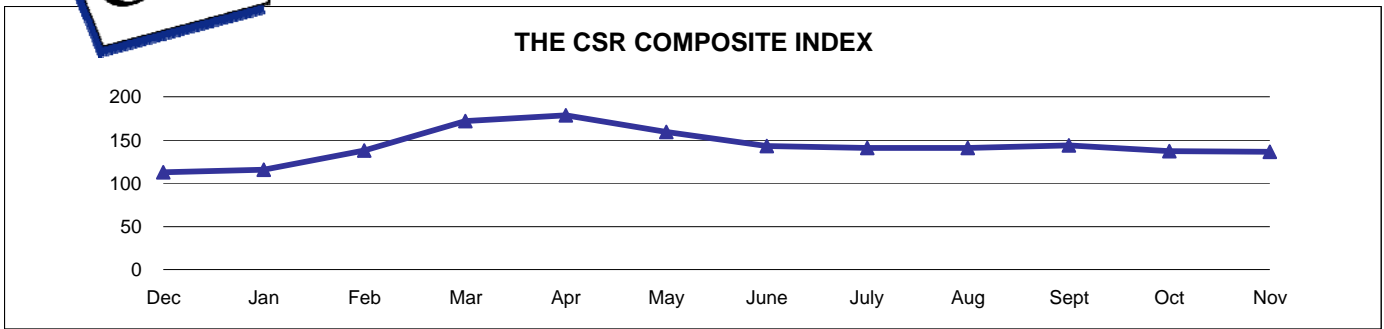
CSR, 26 Wellington Street East, Suite 601, Toronto, Ontario, M5E 1S2

website: [www.csr.org](http://www.csr.org)



# The Price Sheet

Monthly Averages from Dec 2006 to Nov 2007  
(CDN\$/Metric Tonne)

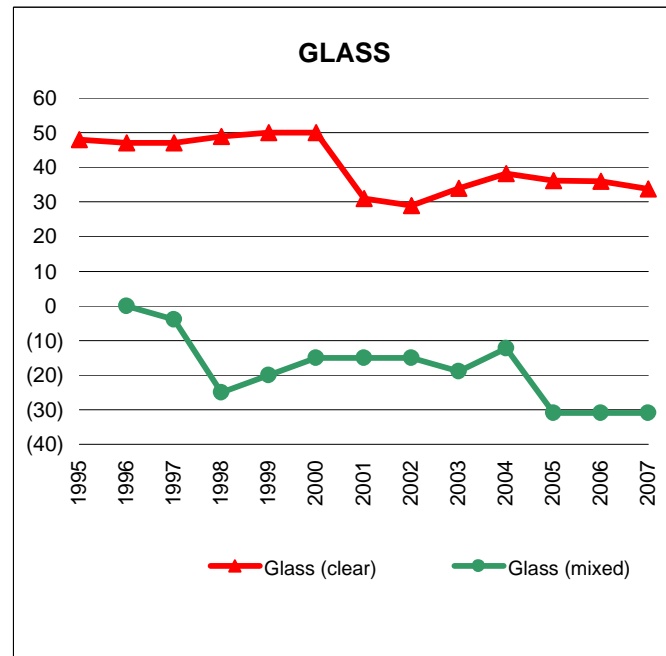
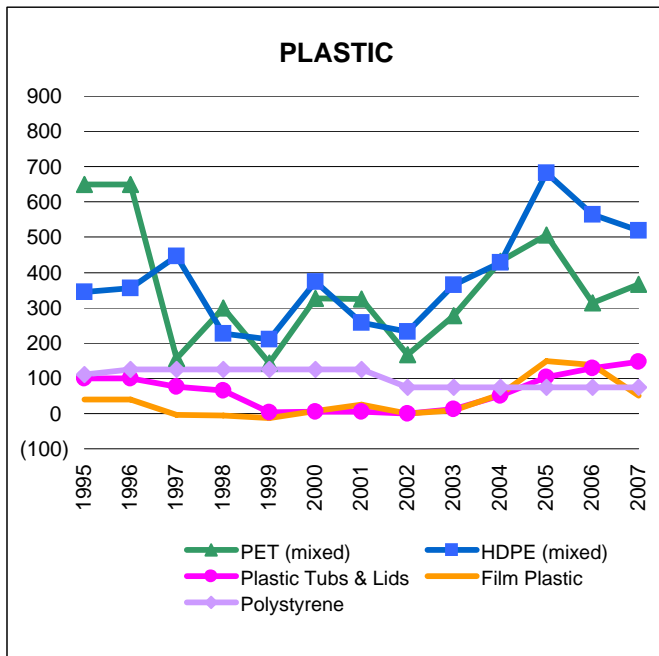
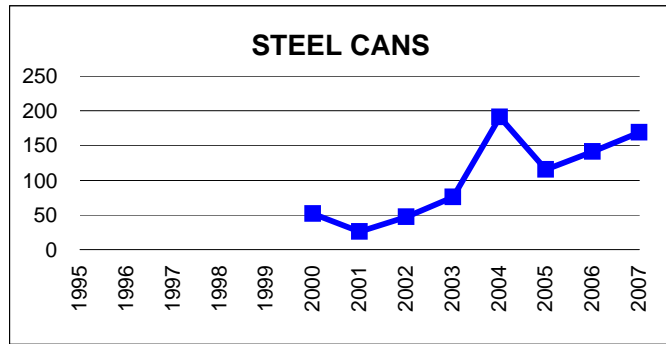
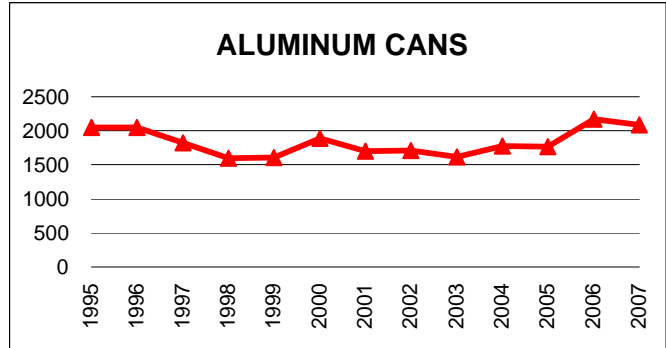
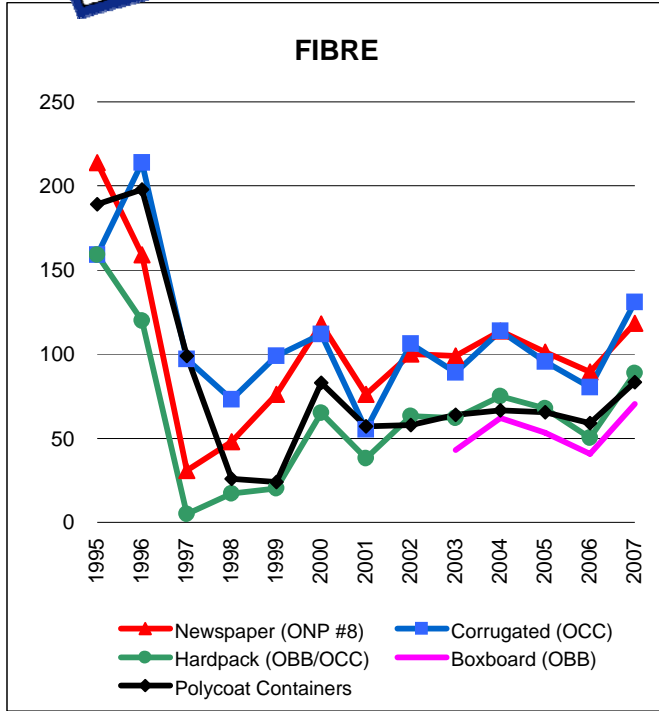


Graphs produced from Monthly Averages Table



# The Price Sheet

## Historical Yearly Averages (CDN\$/Metric Tonne)



Graphs produced from Yearly Averages Table