



The Price Sheet

Spot Market Price Trends as of July 19, 2007

MONTHLY AVERAGES (CDN\$/Metric Tonne)

| | Aug 2006 | Sept 2006 | Oct 2006 | Nov 2006 | Dec 2006 | Jan 2007 | Feb 2007 | Mar 2007 | Apr 2007 | May 2007 | June 2007 | July 2007 |
|------------------------|-------------|--------------|-------------|-------------|-------------|-------------|-------------|-------------|-------------|-------------|--------------|--------------|
| Aluminum Cans | 2100 | 2032 | 2065 | 2177 | 2207 | 2262 | 2376 | 2335 | 2383 | 2347 | 2093 | 2028 |
| Steel Cans | 129 | 141 | 140 | 122 | 123 | 134 | 170 | 223 | 201 | 157 | 159 | 160 |
| Glass (clear) | 36 | 36 | 36 | 36 | 36 | 36 | 36 | 36 | 36 | 36 | 36 | 33 |
| Glass (mixed) | (31) | (31) | (31) | (31) | (31) | (31) | (31) | (31) | (31) | (31) | (31) | (31) |
| PET (mixed) | 192 | 210 | 248 | 294 | 311 | 339 | 374 | 402 | 393 | 375 | 364 | 357 |
| HDPE (mixed) | 440 | 421 | 423 | 380 | 387 | 393 | 433 | 465 | 492 | 501 | 533 | 574 |
| Plastic Tubs & Lids | 117 | 135 | 125 | 127 | 109 | 107 | 107 | 132 | 155 | 149 | 147 | 165 |
| Film Plastic | 141 | 130 | 111 | 115 | 54 | 48 | 42 | 47 | 42 | 42 | 56 | 54 |
| Polystyrene | 75 | 75 | 75 | 75 | 75 | 75 | 75 | 75 | 75 | 75 | 75 | 75 |
| Newspaper (ONP #8) | 95 | 94 | 96 | 96 | 99 | 99 | 124 | 157 | 150 | 133 | 112 | 105 |
| Corrugated (OCC) | 99 | 89 | 86 | 79 | 81 | 82 | 116 | 193 | 152 | 121 | 118 | 129 |
| Hardpack (OBB/OCC) | 63 | 51 | 54 | 47 | 50 | 56 | 70 | 130 | 110 | 76 | 77 | 81 |
| Boxboard (OBB) | 45 | 45 | 43 | 43 | 42 | 46 | 64 | 87 | 83 | 79 | 65 | 68 |
| Polycoat Containers | 59 | 62 | 66 | 66 | 73 | 70 | 67 | 83 | 75 | 88 | 88 | 92 |
| Composite Index | 110 | 108 | 110 | 110 | 113 | 116 | 138 | 172 | 178 | 159 | 143 | 140 |

YEARLY AVERAGES (CDN\$/Metric Tonne)

| | 1994 | 1995 | 1996 | 1997 | 1998 | 1999 | 2000 | 2001 | 2002 | 2003 | 2004 | 2005 | 2006 | 2007 |
|------------------------|------|------|------|------|------|------|------------|-----------|------------|------------|------------|------------|------------|------------|
| Aluminum Cans | 1731 | 2045 | 2045 | 1827 | 1595 | 1608 | 1893 | 1700 | 1709 | 1619 | 1772 | 1763 | 2169 | 2261 |
| Steel Cans | | | | | | | 52 | 26 | 47 | 76 | 191 | 116 | 141 | 172 |
| Glass (clear) | 47 | 48 | 47 | 47 | 49 | 50 | 50 | 31 | 29 | 34 | 38 | 36 | 36 | 36 |
| Glass (mixed) | | | 0 | (4) | (25) | (20) | (15) | (15) | (15) | (19) | (12) | (31) | (31) | (31) |
| PET (mixed) | 181 | 650 | 650 | 155 | 300 | 144 | 326 | 324 | 166 | 278 | 432 | 507 | 314 | 372 |
| HDPE (mixed) | 259 | 345 | 356 | 447 | 226 | 211 | 373 | 257 | 233 | 364 | 428 | 683 | 565 | 484 |
| Plastic Tubs & Lids | | 100 | 100 | 76 | 66 | 3 | 5 | 5 | 0 | 12 | 51 | 104 | 128 | 137 |
| Film Plastic | 40 | 40 | 40 | (4) | (5) | (12) | 7 | 26 | 0 | 8 | 55 | 148 | 137 | 47 |
| Polystyrene | 88 | 110 | 125 | 125 | 125 | 125 | 125 | 125 | 75 | 75 | 75 | 75 | 75 | 75 |
| Newspaper (ONP #8) | 80 | 214 | 159 | 31 | 48 | 76 | 118 | 76 | 100 | 99 | 114 | 101 | 89 | 126 |
| Corrugated (OCC) | 94 | 159 | 214 | 97 | 73 | 99 | 112 | 55 | 106 | 89 | 114 | 95 | 80 | 130 |
| Hardpack (OBB/OCC) | 38 | 159 | 120 | 5 | 17 | 20 | 65 | 38 | 63 | 62 | 75 | 68 | 50 | 86 |
| Boxboard (OBB) | | | | | | | | | | 43 | 62 | 53 | 41 | 70 |
| Polycoat Containers | | 189 | 198 | 99 | 26 | 24 | 83 | 57 | 58 | 64 | 67 | 66 | 59 | 81 |
| Composite Index | | | | | | | 134 | 95 | 113 | 114 | 131 | 124 | 111 | 149 |

☐ Indicates FOB the municipality

▨ Indicates delivery to mill or industry

Notes:

- Prices are for baled post-consumer residential materials (except glass, which is loose).
- Prices are compiled from a range of municipal programs across Ontario combined with information from industry representatives.
Prices may not be the same as actual prices being paid in any given program.
- The CSR Composite Index is calculated using the overall composition of residential Blue Box material recovered and marketed in Ontario as reported from the approved 2005 WDO datacall with some additional allocations to material categories. It does not include mixed plastics. Mixed glass includes coloured glass. ONP8 includes a quantity of lower grade papers sold at lower prices. Composition figures are updated annually. Details available upon request.

For more information please contact:

John Dixie at 647-777-3366 (Toll-Free: 888-277-2762, Ext. 3366) email: jdixie@csr.org

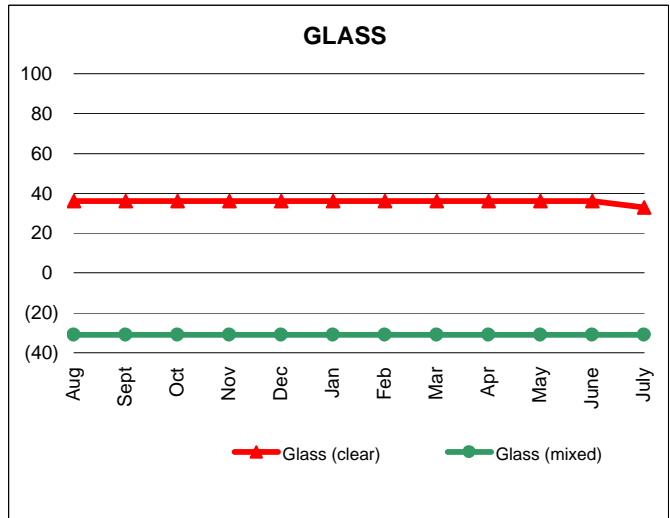
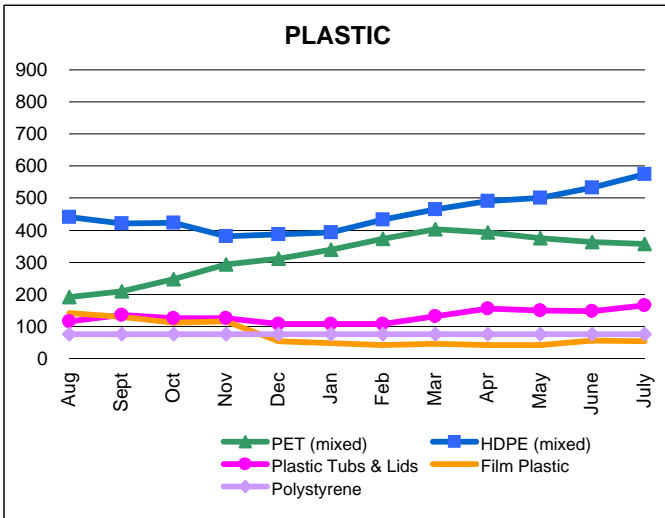
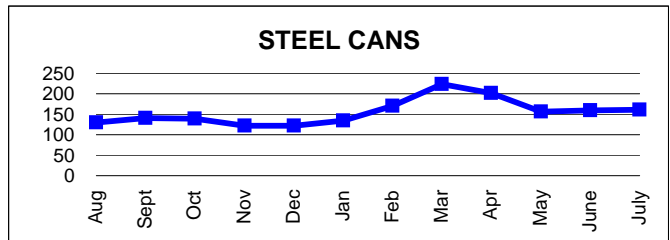
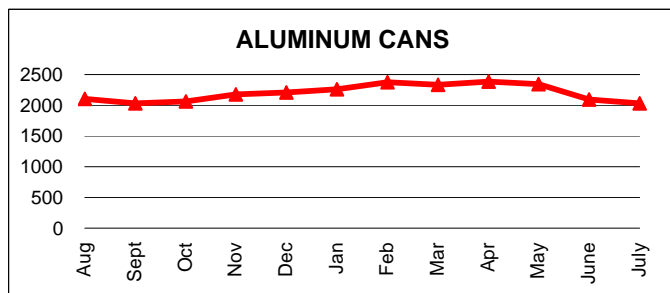
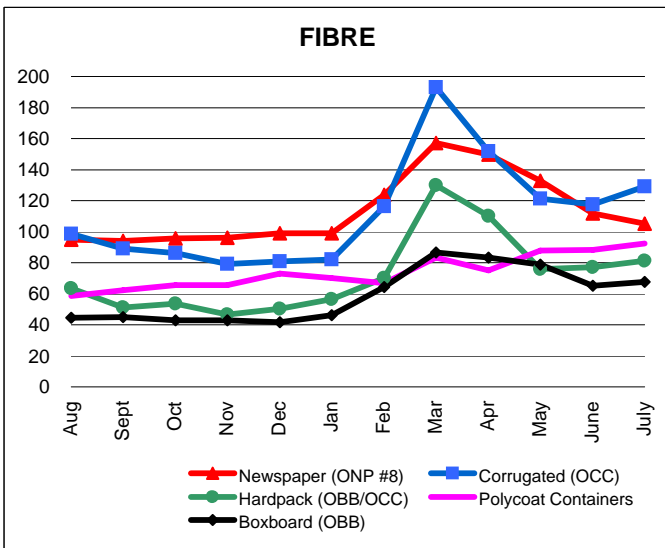
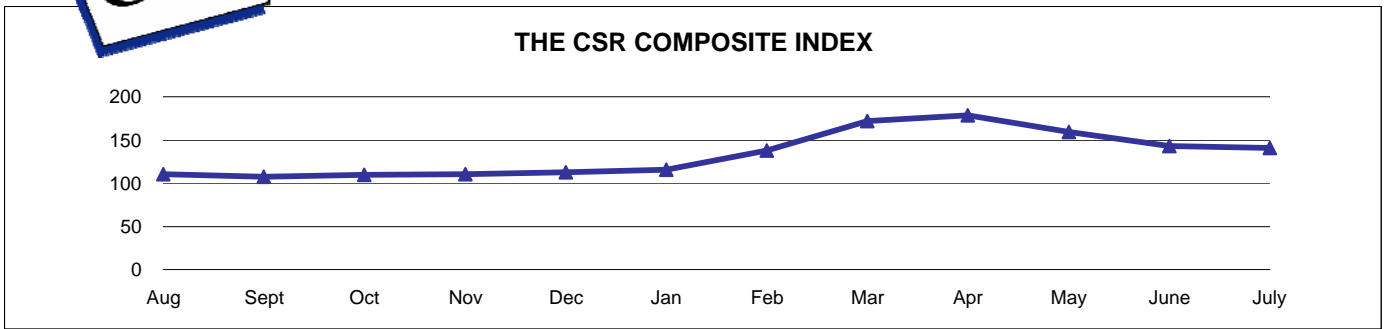
CSR, 26 Wellington Street East, Suite 601, Toronto, Ontario, M5E 1S2

website: www.csr.org



The Price Sheet

Monthly Averages from August 2006 to July 2007
(CDN\$/Metric Tonne)

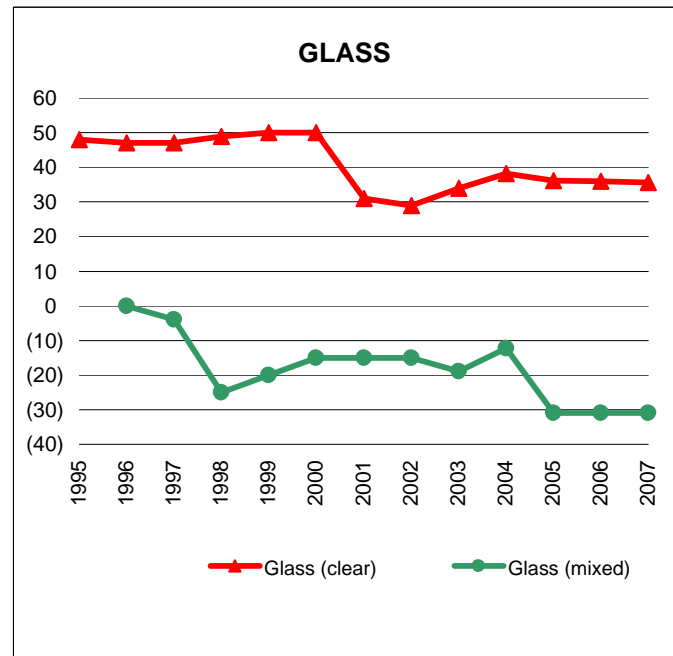
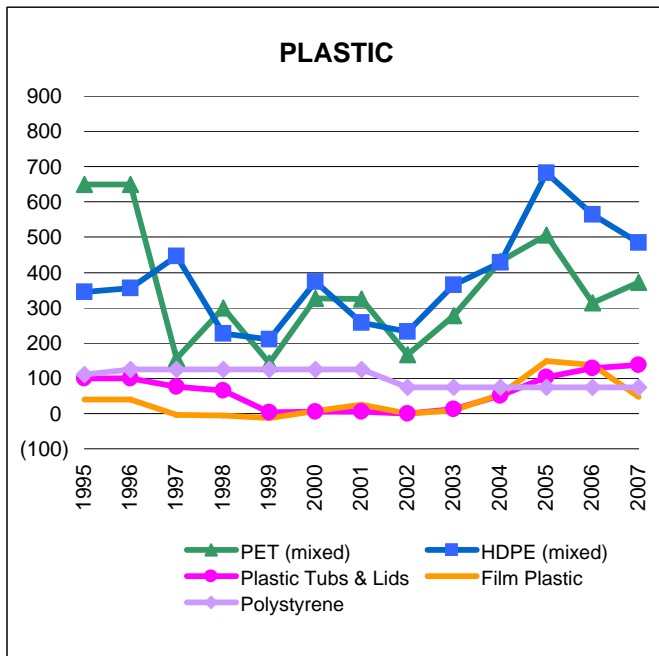
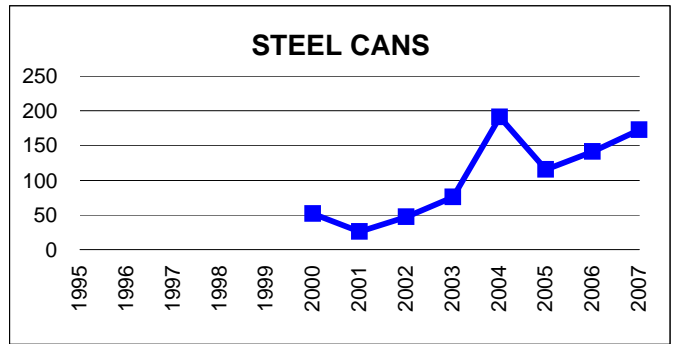
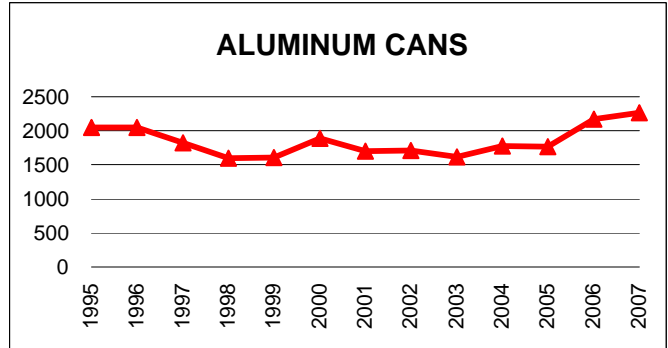
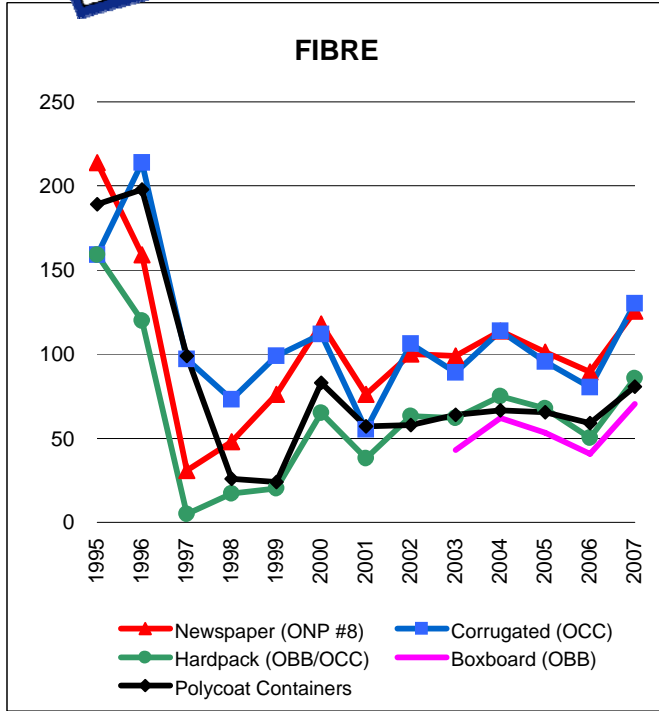


Graphs produced from Monthly Averages Table



The Price Sheet

Historical Yearly Averages (CDN\$/Metric Tonne)



Graphs produced from Yearly Averages Table