



# The Price Sheet

Spot Market Price Trends as of June 20, 2007

## MONTHLY AVERAGES (CDN\$/Metric Tonne)

	July 2006	Aug 2006	Sept 2006	Oct 2006	Nov 2006	Dec 2006	Jan 2007	Feb 2007	Mar 2007	Apr 2007	May 2007	June 2007
Aluminum Cans	2150	2100	2032	2065	2177	2207	2262	2376	2335	2383	2347	2093
Steel Cans	180	129	141	140	122	123	134	170	223	201	157	159
Glass (clear)	36	36	36	36	36	36	36	36	36	36	36	36
Glass (mixed)	(31)	(31)	(31)	(31)	(31)	(31)	(31)	(31)	(31)	(31)	(31)	(31)
PET (mixed)	224	192	210	248	294	311	339	374	402	393	375	364
HDPE (mixed)	495	440	421	423	380	387	393	433	465	492	501	533
Plastic Tubs & Lids	134	117	135	125	127	109	107	107	132	155	149	147
Film Plastic	146	141	130	111	115	54	48	42	47	42	42	56
Polystyrene	75	75	75	75	75	75	75	75	75	75	75	75
Newspaper (ONP #8)	84	95	94	96	96	99	99	124	157	150	133	112
Corrugated (OCC)	94	99	89	86	79	81	82	116	193	152	121	118
Hardpack (OBB/OCC)	60	63	51	54	47	50	56	70	130	110	76	77
Boxboard (OBB)	43	45	45	43	43	42	46	64	87	83	79	65
Polycoat Containers	53	59	62	66	66	73	70	67	83	75	88	88
<b>Composite Index</b>	<b>108</b>	<b>110</b>	<b>108</b>	<b>110</b>	<b>110</b>	<b>113</b>	<b>116</b>	<b>138</b>	<b>172</b>	<b>178</b>	<b>159</b>	<b>143</b>

## YEARLY AVERAGES (CDN\$/Metric Tonne)

	1994	1995	1996	1997	1998	1999	2000	2001	2002	2003	2004	2005	2006	2007
Aluminum Cans	1731	2045	2045	1827	1595	1608	1893	1700	1709	1619	1772	1763	2169	2299
Steel Cans							52	26	47	76	191	116	141	174
Glass (clear)	47	48	47	47	49	50	50	31	29	34	38	36	36	36
Glass (mixed)			0	(4)	(25)	(20)	(15)	(15)	(15)	(19)	(12)	(31)	(31)	(31)
PET (mixed)	181	650	650	155	300	144	326	324	166	278	432	507	314	375
HDPE (mixed)	259	345	356	447	226	211	373	257	233	364	428	683	565	469
Plastic Tubs & Lids		100	100	76	66	3	5	5	0	12	51	104	128	133
Film Plastic	40	40	40	(4)	(5)	(12)	7	26	0	8	55	148	137	46
Polystyrene	88	110	125	125	125	125	125	125	75	75	75	75	75	75
Newspaper (ONP #8)	80	214	159	31	48	76	118	76	100	99	114	101	89	129
Corrugated (OCC)	94	159	214	97	73	99	112	55	106	89	114	95	80	130
Hardpack (OBB/OCC)	38	159	120	5	17	20	65	38	63	62	75	68	50	87
Boxboard (OBB)										43	62	53	41	71
Polycoat Containers		189	198	99	26	24	83	57	58	64	67	66	59	79
<b>Composite Index</b>							<b>134</b>	<b>95</b>	<b>113</b>	<b>114</b>	<b>131</b>	<b>124</b>	<b>111</b>	<b>151</b>

☐ Indicates FOB the municipality

☑ Indicates delivery to mill or industr

Notes:

1) Prices are for baled post-consumer residential materials (except glass, which is loose).

2) Prices are compiled from a range of municipal programs across Ontario combined with information from industry representatives.

Prices may not be the same as actual prices being paid in any given program.

3) The CSR Composite Index is calculated using the overall composition of residential Blue Box material recovered and marketed in Ontario as reported from the approved 2005 WDO datacall with some additional allocations to material categories. It does not include mixed plastics. Mixed glass includes coloured glass. ONP8 includes a quantity of lower grade papers sold at lower prices. Composition figures are updated annually. Details available upon request.

For more information please contact:

John Dixie at 647-777-3366 (Toll-Free: 888-277-2762, Ext. 3366) email: [jdixie@csr.org](mailto:jdixie@csr.org)

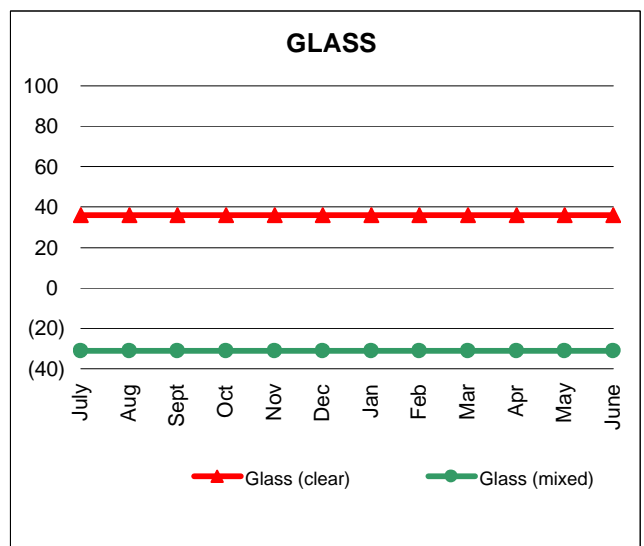
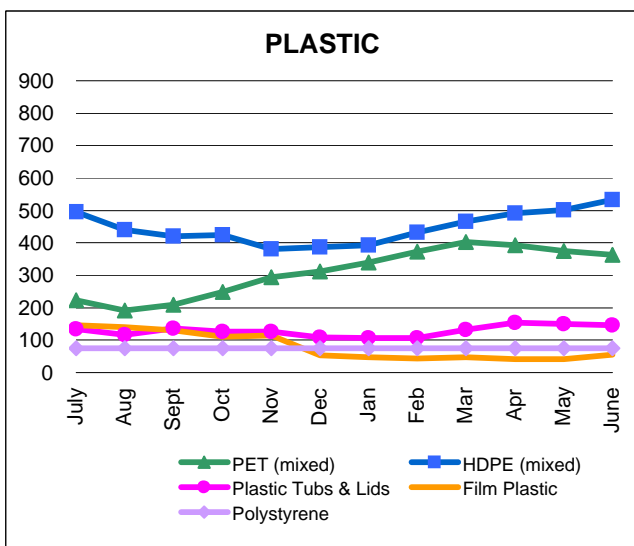
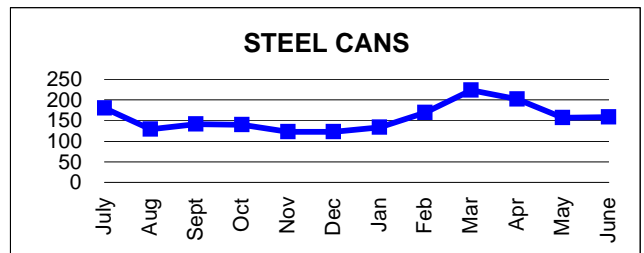
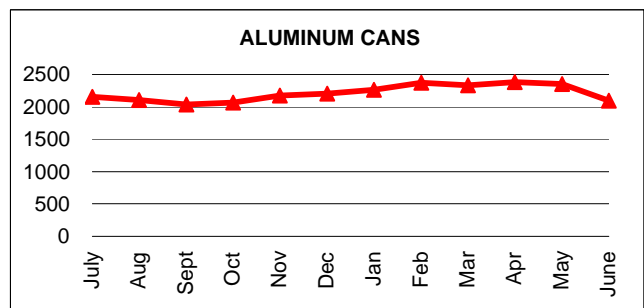
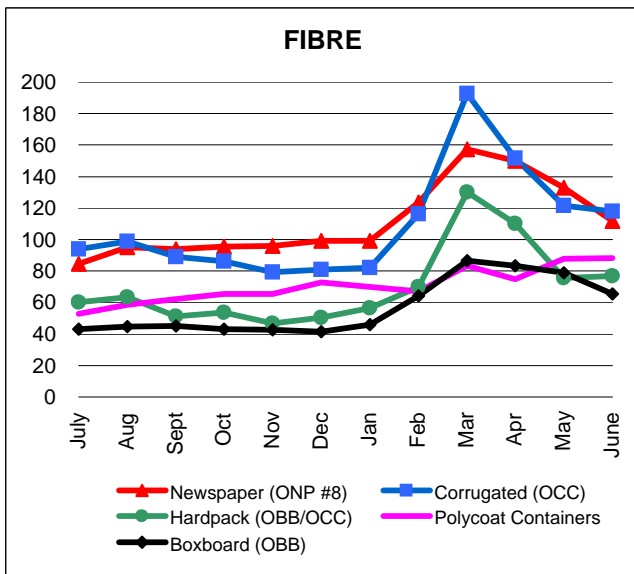
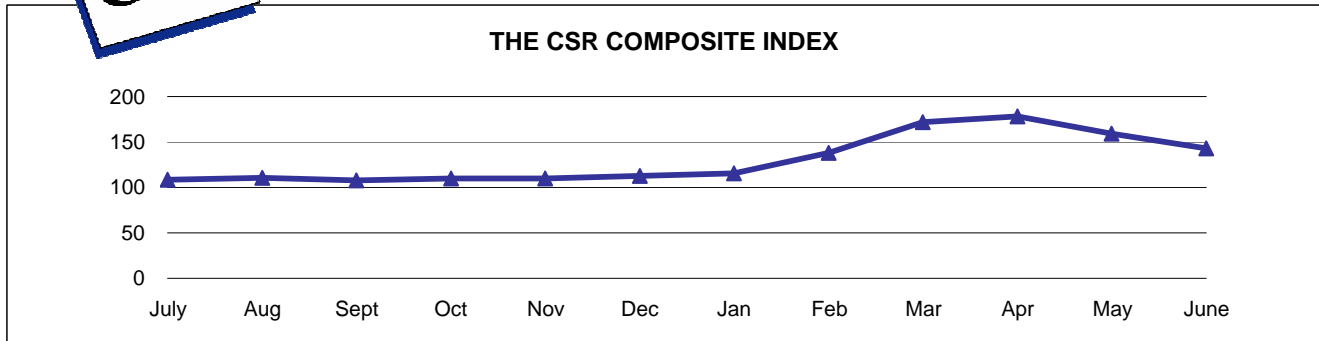
CSR, 26 Wellington Street East, Suite 601, Toronto, Ontario, M5E 1S2

website: [www.csr.org](http://www.csr.org)



# The Price Sheet

Monthly Averages from July 2006 to June 2007  
(CDN\$/Metric Tonne)

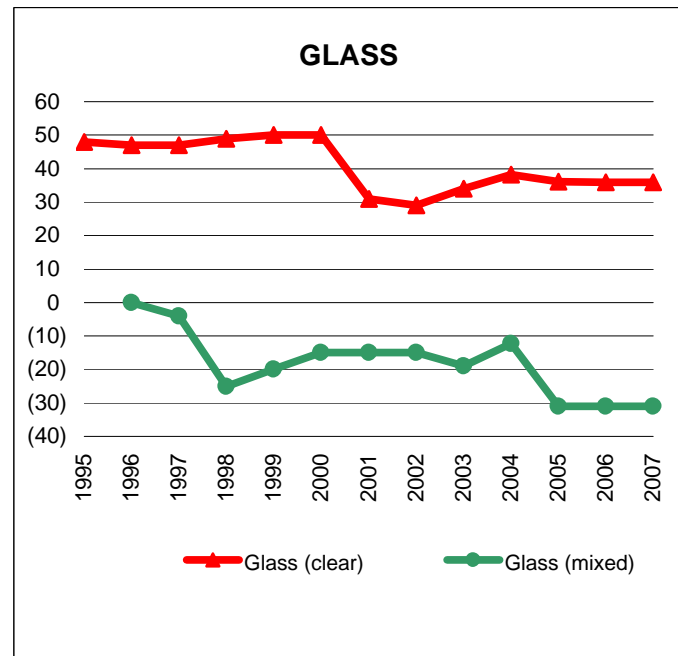
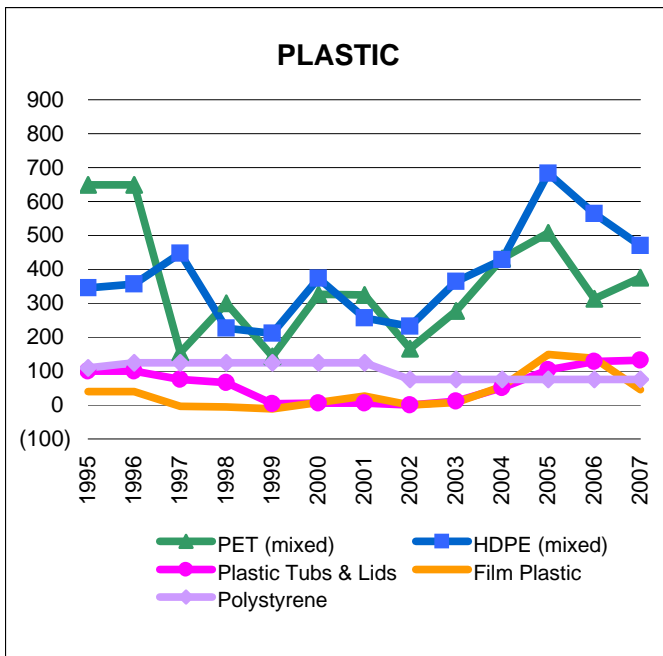
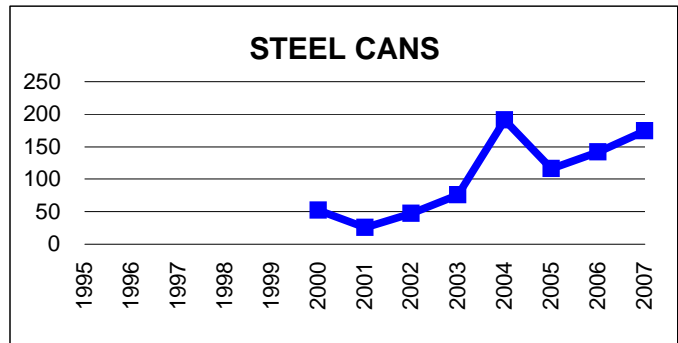
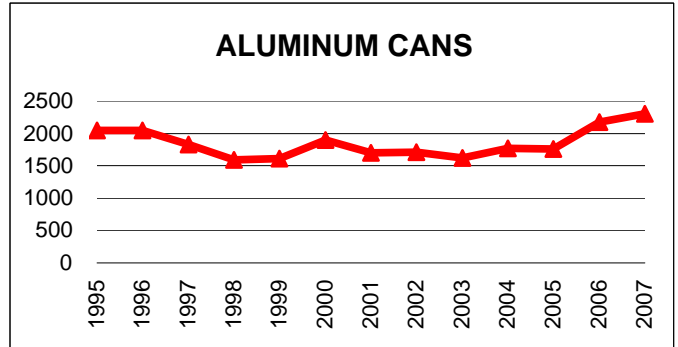
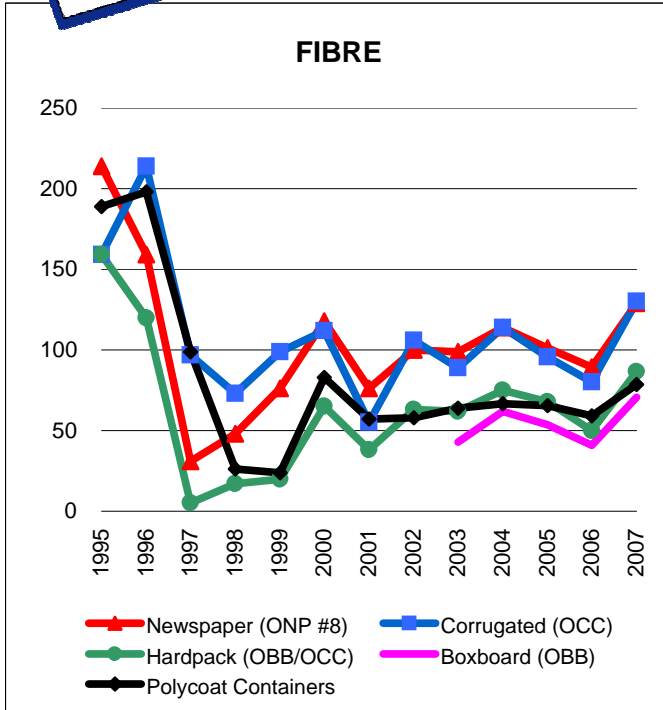


Graphs produced from Monthly Averages Table



# The Price Sheet

## Historical Yearly Averages (CDN\$/Metric Tonne)



Graphs produced from Yearly Averages Table



# The Price Sheet

National Market Prices as of June 20, 2007

	QUARTERLY AVERAGES (CDN\$/Metric Tonne)											
	Western Canada				Central (Ontario)				Eastern Canada			
	Q3 Sep 06	Q4 Dec 06	Q1 Mar 07	Q2 Jun 07	Q3 Sep 06	Q4 Dec 06	Q1 Mar 07	Q2 Jun 07	Q3 Sep 06	Q4 Dec 06	Q1 Mar 07	Q2 Jun 07
<b>Aluminum Cans</b>	2002	2196	2364	2046	2032	2207	2335	2093	2085	2267	2409	2026
<b>Steel Cans</b>	n/a	n/a	n/a	n/a	141	123	223	159	107	87	132	125
<b>Glass (clear/flint)</b>	n/a	n/a	n/a	n/a	36	36	36	36	n/a	n/a	n/a	n/a
<b>Glass (coloured/mixed)</b>	n/a	n/a	n/a	n/a	(31)	(31)	(31)	(31)	n/a	n/a	n/a	n/a
<b>PET (mixed)</b>	413	386	457	384	210	311	402	364	290	327	410	379
<b>HDPE (mixed)</b>	n/a	n/a	n/a	n/a	421	387	465	533	n/a	n/a	491	482
<b>HDPE (natural)</b>	472	601	626	662	n/a	n/a	n/a	n/a	n/a	n/a	n/a	n/a
<b>ONP (#8)</b>	n/a	n/a	n/a	n/a	94	99	157	112	83	85	115	108
<b>ONP (#6)</b>	n/a	n/a	n/a	n/a	n/a	n/a	n/a	n/a	77	76	84	84
<b>OCC</b>	n/a	n/a	n/a	n/a	89	81	193	118	87	81	149	95
<b>Residential (soft) Mix<sup>4</sup></b>	n/a	n/a	n/a	n/a	51	50	130	77	n/a	n/a	n/a	n/a
<b>Polycoat Containers</b>	n/a	n/a	n/a	n/a	62	73	83	88	n/a	n/a	n/a	n/a

☐ Indicates FOB the municipality

☑ Indicates delivery to mill or industry

Notes:

- Prices are for baled post-consumer residential materials (except glass, which is loose).
- Prices are compiled from a range of municipal programs across Canada combined with information from industry representatives. Prices may not be the same as actual prices being paid in any given program.
- Western Canada: BC, Alberta, Saskatchewan, Manitoba. Central Canada: Ontario. Eastern Canada: Quebec, PEI, Nova Scotia, N Brunswick, Newfoundland
- Pricing for Central Canada (Ontario) is for OBB/OCC hard pack.

For more information please contact:

John Dixie at 647-777-3366 (Toll-Free: 888-277-2762, Ext. 3366) email: [jdixie@csr.org](mailto:jdixie@csr.org)

CSR, 26 Wellington Street East, Suite 601, Toronto, Ontario, M5E 1S2

website: [www.csr.org](http://www.csr.org)