



The Price Sheet

Spot Market Price Trends as of May 17, 2007

MONTHLY AVERAGES (CDN\$/Metric Tonne)

	June 2006	July 2006	Aug 2006	Sept 2006	Oct 2006	Nov 2006	Dec 2006	Jan 2007	Feb 2007	Mar 2007	Apr 2007	May 2007
Aluminum Cans	2175	2150	2100	2032	2065	2177	2207	2262	2376	2335	2383	2347
Steel Cans	180	180	129	141	140	122	123	134	170	223	201	157
Glass (clear)	36	36	36	36	36	36	36	36	36	36	36	36
Glass (mixed)	(31)	(31)	(31)	(31)	(31)	(31)	(31)	(31)	(31)	(31)	(31)	(31)
PET (mixed)	324	224	192	210	248	294	311	339	374	402	393	375
HDPE (mixed)	487	495	440	421	423	380	387	393	433	465	492	501
Plastic Tubs & Lids	133	134	117	135	125	127	109	107	107	132	155	149
Film Plastic	145	146	141	130	111	115	54	48	42	47	42	42
Polystyrene	75	75	75	75	75	75	75	75	75	75	75	75
Newspaper (ONP #8)	84	84	95	94	96	96	99	99	124	157	150	133
Corrugated (OCC)	79	94	99	89	86	79	81	82	116	193	152	121
Hardpack (OBB/OCC)	46	60	63	51	54	47	50	56	70	130	110	76
Boxboard (OBB)	40	43	45	45	43	43	42	46	64	87	83	79
Polycoat Containers	50	53	59	62	66	66	73	70	67	83	75	88
Composite Index	108	108	110	108	110	110	113	116	138	172	178	159

YEARLY AVERAGES (CDN\$/Metric Tonne)

	1994	1995	1996	1997	1998	1999	2000	2001	2002	2003	2004	2005	2006	2007
Aluminum Cans	1731	2045	2045	1827	1595	1608	1893	1700	1709	1619	1772	1763	2169	2341
Steel Cans							52	26	47	76	191	116	141	177
Glass (clear)	47	48	47	47	49	50	50	31	29	34	38	36	36	36
Glass (mixed)			0	(4)	(25)	(20)	(15)	(15)	(15)	(19)	(12)	(31)	(31)	(31)
PET (mixed)	181	650	650	155	300	144	326	324	166	278	432	507	314	377
HDPE (mixed)	259	345	356	447	226	211	373	257	233	364	428	683	565	457
Plastic Tubs & Lids		100	100	76	66	3	5	5	0	12	51	104	128	130
Film Plastic	40	40	40	(4)	(5)	(12)	7	26	0	8	55	148	137	44
Polystyrene	88	110	125	125	125	125	125	125	75	75	75	75	75	75
Newspaper (ONP #8)	80	214	159	31	48	76	118	76	100	99	114	101	89	133
Corrugated (OCC)	94	159	214	97	73	99	112	55	106	89	114	95	80	133
Hardpack (OBB/OCC)	38	159	120	5	17	20	65	38	63	62	75	68	50	88
Boxboard (OBB)										43	62	53	41	72
Polycoat Containers		189	198	99	26	24	83	57	58	64	67	66	59	77
Composite Index							134	95	113	114	131	124	111	153

□ Indicates FOB the municipality

■ Indicates delivery to mill or industr

Notes:

- Prices are for baled post-consumer residential materials (except glass, which is loose).
- Prices are compiled from a range of municipal programs across Ontario combined with information from industry representatives.
Prices may not be the same as actual prices being paid in any given program.
- The CSR Composite Index is calculated using the overall composition of residential Blue Box material recovered and marketed in Ontario as reported from the approved 2005 WDO datacall with some additional allocations to material categories. It does not include mixed plastics. Mixed glass includes coloured glass. ONP8 includes a quantity of lower grade papers sold at lower prices. Composition figures are updated annually. Details available upon request.

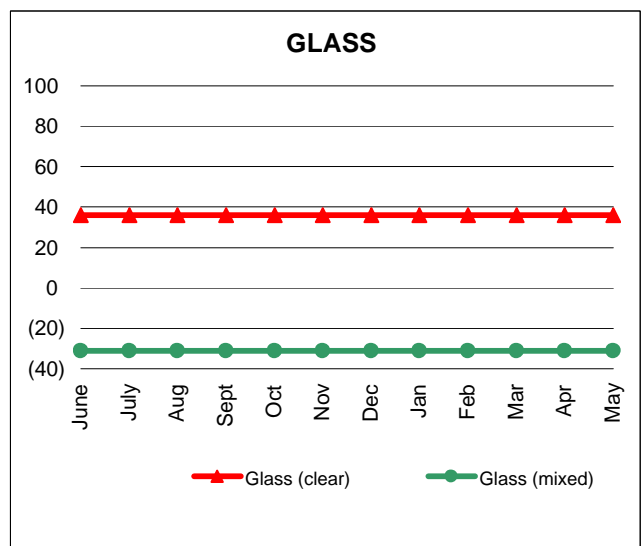
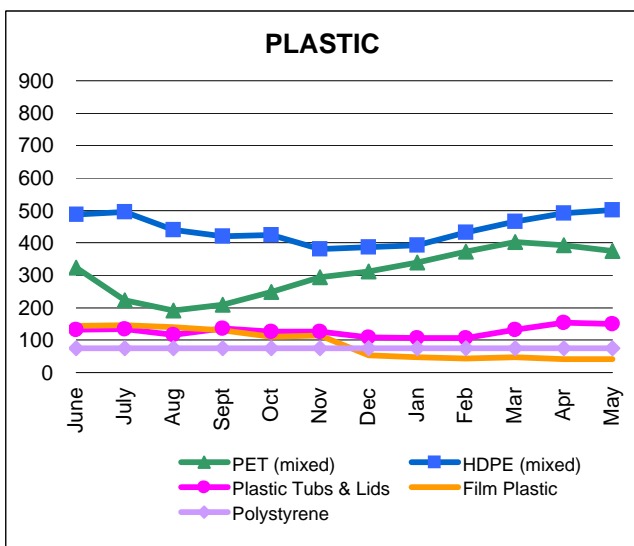
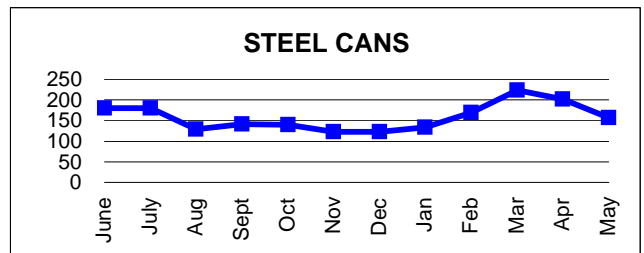
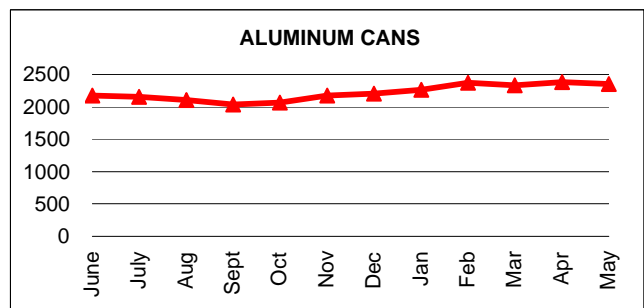
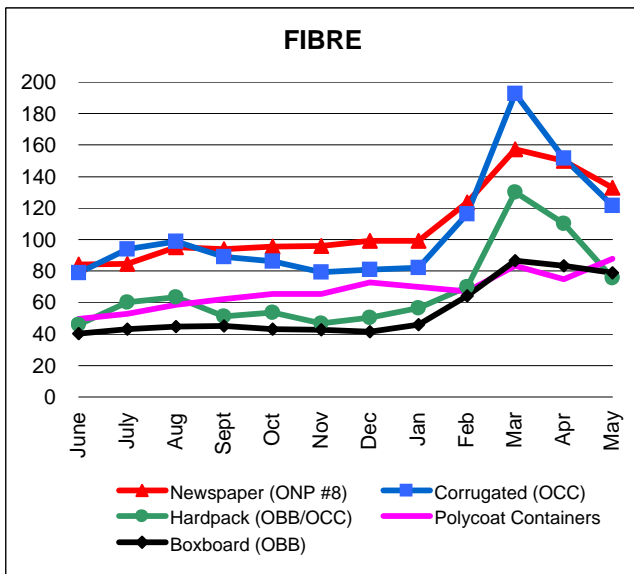
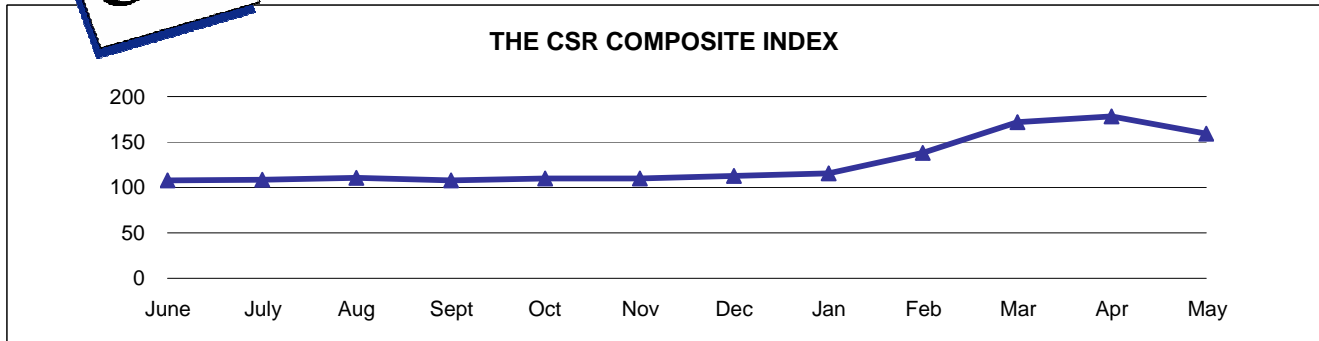
For more information please contact:

John Dixie at 647-777-3366 (Toll-Free: 888-277-2762, Ext. 3366) email: jdixie@csr.org
 CSR, 26 Wellington Street East, Suite 601, Toronto, Ontario, M5E 1S2
 website: www.csr.org



The Price Sheet

Monthly Averages from June 2006 to May 2007
(CDN\$/Metric Tonne)

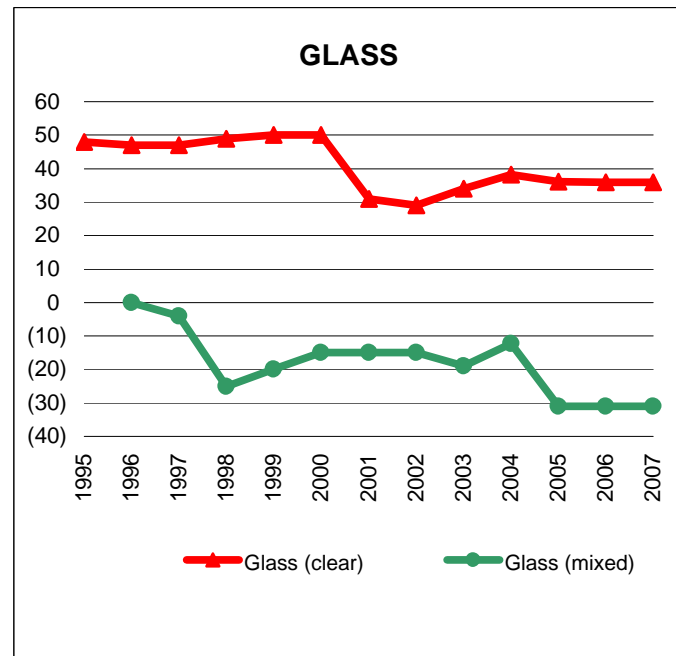
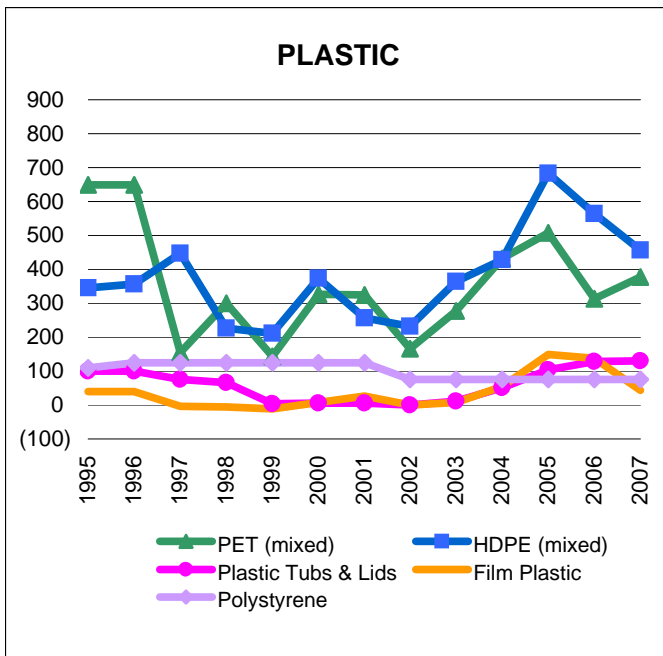
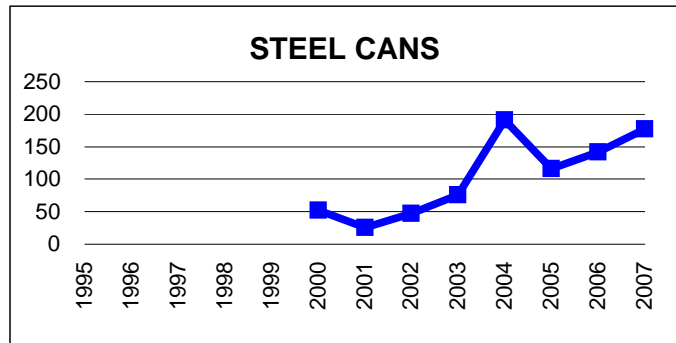
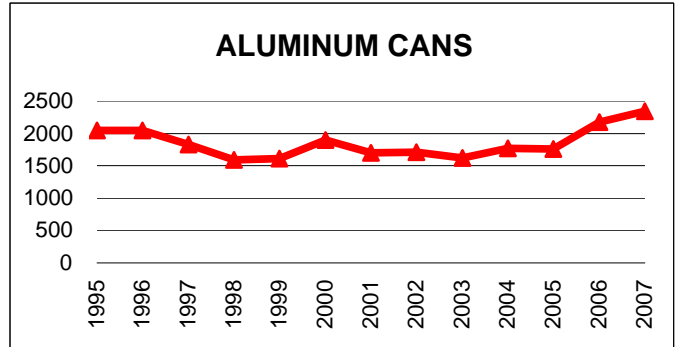
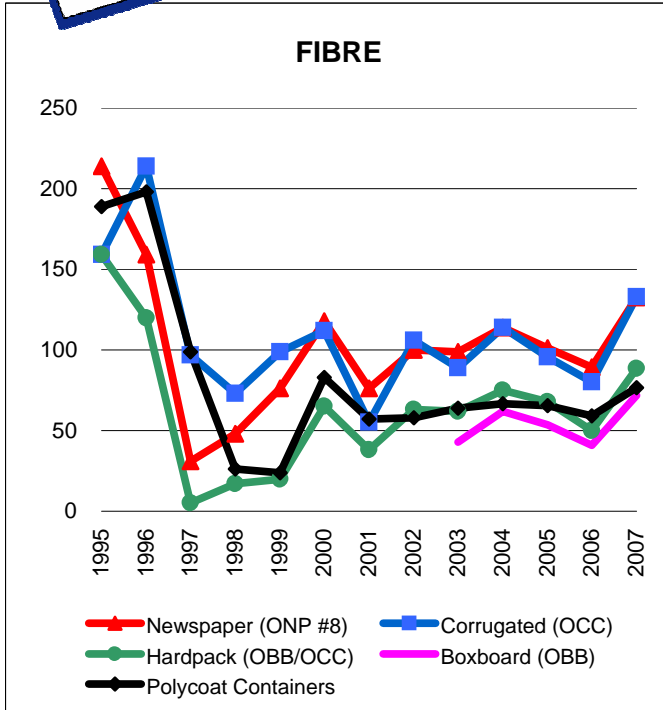


Graphs produced from Monthly Averages Table



The Price Sheet

Historical Yearly Averages (CDN\$/Metric Tonne)



Graphs produced from Yearly Averages Table