



The Price Sheet

Spot Market Price Trends as of March 16, 2007

MONTHLY AVERAGES (CDN\$/Metric Tonne)

	April 2006	May 2006	June 2006	July 2006	Aug 2006	Sept 2006	Oct 2006	Nov 2006	Dec 2006	Jan 2007	Feb 2007	Mar 2007
Aluminum Cans	2301	2425	2175	2150	2100	2032	2065	2177	2207	2262	2376	2335
Steel Cans	152	164	180	180	129	141	140	122	123	134	170	223
Glass (clear)	36	36	36	36	36	36	36	36	36	36	36	36
Glass (mixed)	(31)	(31)	(31)	(31)	(31)	(31)	(31)	(31)	(31)	(31)	(31)	(31)
PET (mixed)	397	340	324	224	192	210	248	294	311	339	374	402
HDPE (mixed)	682	524	487	495	440	421	423	380	387	393	433	465
Plastic Tubs & Lids	162	132	133	134	117	135	125	127	109	107	107	132
Film Plastic	159	154	145	146	141	130	111	115	54	48	42	47
Polystyrene	75	75	75	75	75	75	75	75	75	75	75	75
Newspaper (ONP #8)	88	85	84	84	95	94	96	96	99	99	124	157
Corrugated (OCC)	81	78	79	94	99	89	86	79	81	82	116	193
Hardpack (OBB/OCC)	50	46	46	60	63	51	54	47	50	56	70	130
Boxboard (OBB)	39	38	40	43	45	45	43	43	42	46	64	87
Polycoat Containers	66	46	50	53	59	62	66	66	73	70	67	83
Composite Index	117	112	108	108	110	108	110	110	113	116	138	172

YEARLY AVERAGES (CDN\$/Metric Tonne)

	1994	1995	1996	1997	1998	1999	2000	2001	2002	2003	2004	2005	2006	2007
Aluminum Cans	1731	2045	2045	1827	1595	1608	1893	1700	1709	1619	1772	1763	2169	2324
Steel Cans							52	26	47	76	191	116	141	176
Glass (clear)	47	48	47	47	49	50	50	31	29	34	38	36	36	36
Glass (mixed)			0	(4)	(25)	(20)	(15)	(15)	(15)	(19)	(12)	(31)	(31)	(31)
PET (mixed)	181	650	650	155	300	144	326	324	166	278	432	507	314	372
HDPE (mixed)	259	345	356	447	226	211	373	257	233	364	428	683	565	430
Plastic Tubs & Lids		100	100	76	66	3	5	5	0	12	51	104	128	115
Film Plastic	40	40	40	(4)	(5)	(12)	7	26	0	8	55	148	137	46
Polystyrene	88	110	125	125	125	125	125	125	75	75	75	75	75	75
Newspaper (ONP #8)	80	214	159	31	48	76	118	76	100	99	114	101	89	127
Corrugated (OCC)	94	159	214	97	73	99	112	55	106	89	114	95	80	130
Hardpack (OBB/OCC)	38	159	120	5	17	20	65	38	63	62	75	68	50	85
Boxboard (OBB)										43	62	53	41	66
Polycoat Containers		189	198	99	26	24	83	57	58	64	67	66	59	73
Composite Index							134	95	113	114	131	124	111	142

☐ Indicates FOB the municipality

☑ Indicates delivery to mill or industr

Notes:

1) Prices are for baled post-consumer residential materials (except glass, which is loose).

2) Prices are compiled from a range of municipal programs across Ontario combined with information from industry representatives.

Prices may not be the same as actual prices being paid in any given program.

3) The CSR Composite Index is calculated using the overall composition of residential Blue Box material recovered and marketed in Ontario as reported from the approved 2004 WDO datacall with some additional allocations to material categories. It does not include mixed plastics. Mixed glass includes coloured glass. ONP8 includes a quantity of lower grade papers sold at lower prices. Composition figures are updated annually. Details available upon request.

For more information please contact:

John Dixie at 647-777-3366 (Toll-Free: 888-277-2762, Ext. 3366) email: jdixie@csr.org

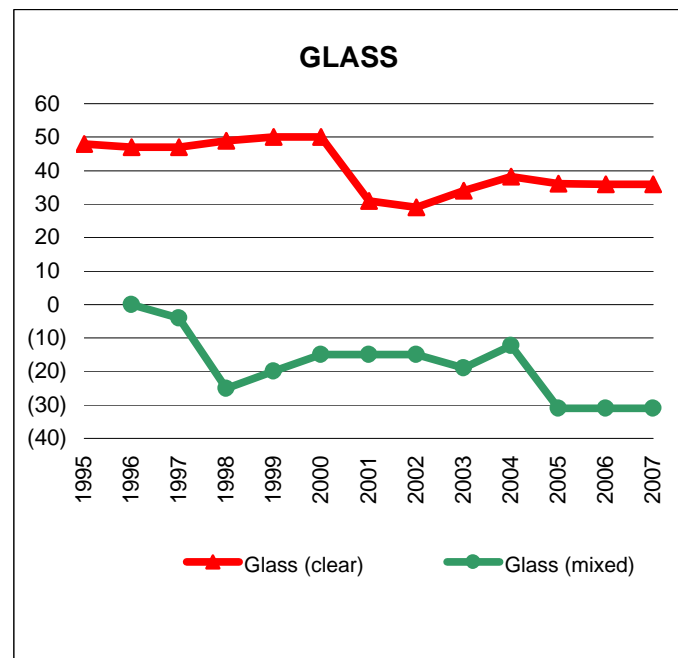
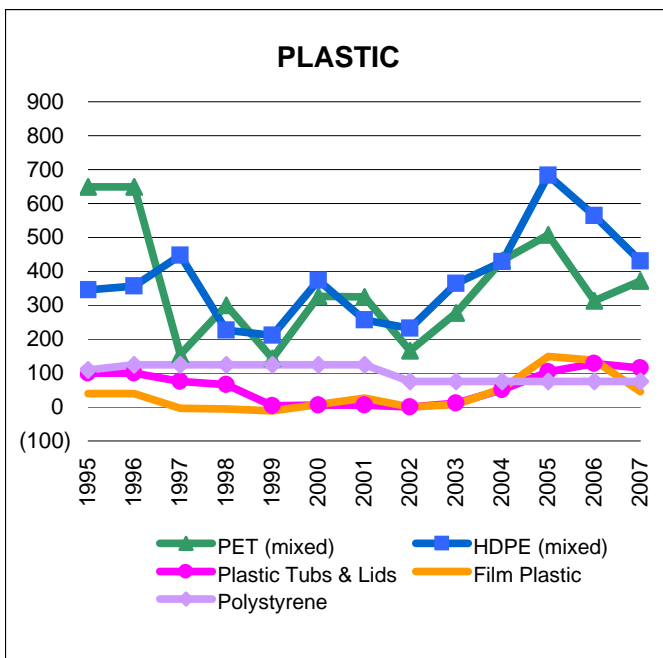
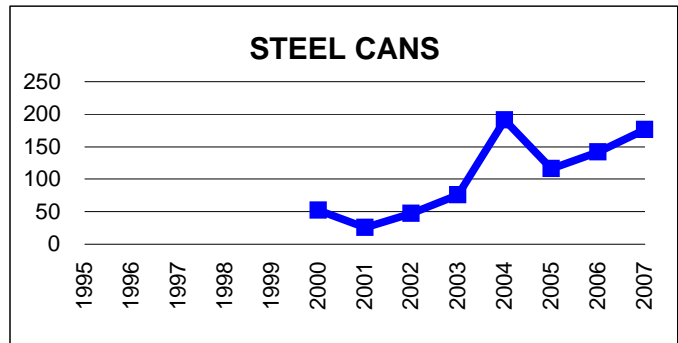
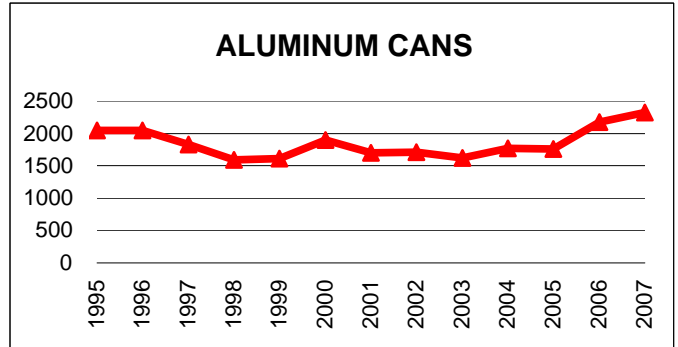
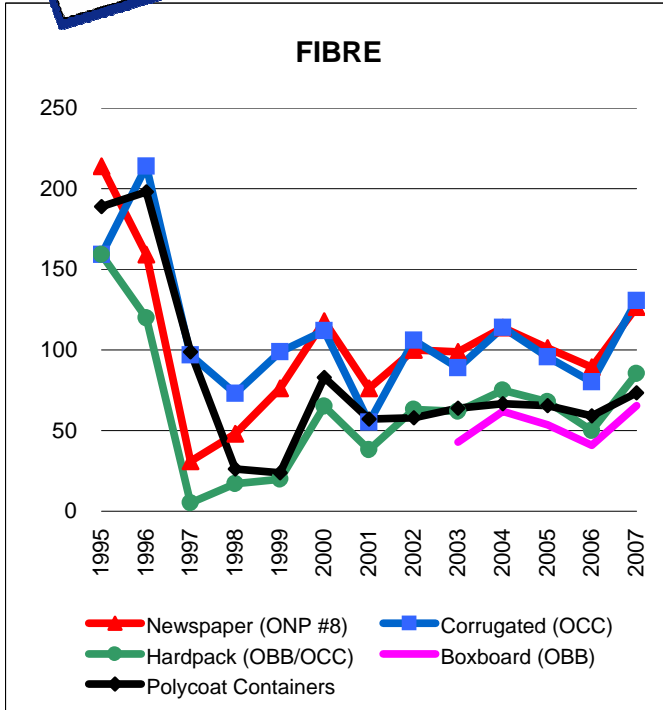
CSR, 26 Wellington Street East, Suite 601, Toronto, Ontario, M5E 1S2

website: www.csr.org



The Price Sheet

Historical Yearly Averages (CDN\$/Metric Tonne)



Graphs produced from Yearly Averages Table



The Price Sheet

National Market Prices as of March 16, 2007

	QUARTERLY AVERAGES (CDN\$/Metric Tonne)											
	Western Canada				Central (Ontario)				Eastern Canada			
	Q2 Jun 06	Q3 Sep 06	Q4 Dec 06	Q1 Mar 07	Q2 Jun 06	Q3 Sep 06	Q4 Dec 06	Q1 Mar 07	Q2 Jun 06	Q3 Sep 06	Q4 Dec 06	Q1 Mar 07
Aluminum Cans	1960	2002	2196	2364	2175	2032	2207	2335	2064	2085	2267	2409
Steel Cans	n/a	n/a	n/a	n/a	180	141	123	223	110	107	87	132
Glass (clear/flint)	n/a	n/a	n/a	n/a	36	36	36	36	n/a	n/a	n/a	n/a
Glass (coloured/mixed)	n/a	n/a	n/a	n/a	(31)	(31)	(31)	(31)	n/a	n/a	n/a	n/a
PET (mixed)	421	413	386	457	324	210	311	402	342	290	327	410
HDPE (mixed)	n/a	n/a	n/a	n/a	487	421	387	465	n/a	n/a	n/a	491
HDPE (natural)	n/a	472	601	626	n/a	n/a	n/a	n/a	n/a	n/a	n/a	n/a
ONP (#8)	n/a	n/a	n/a	n/a	84	94	99	157	83	83	85	115
ONP (#6)	n/a	n/a	n/a	n/a	n/a	n/a	n/a	n/a	71	77	76	84
OCC	n/a	n/a	n/a	n/a	79	89	81	193	79	87	81	149
Residential (soft) Mix ⁴	n/a	n/a	n/a	n/a	46	51	50	130	n/a	n/a	n/a	n/a
Polycoat Containers	n/a	n/a	n/a	n/a	50	62	73	83	n/a	n/a	n/a	n/a

Indicates FOB the municipality

Indicates delivery to mill or industry

Notes:

- Prices are for baled post-consumer residential materials (except glass, which is loose).
- Prices are compiled from a range of municipal programs across Canada combined with information from industry representatives. Prices may not be the same as actual prices being paid in any given program.
- Western Canada: BC, Alberta, Saskatchewan, Manitoba. Central Canada: Ontario. Eastern Canada: Quebec, PEI, Nova Scotia, N Brunswick, Newfoundland
- Pricing for Central Canada (Ontario) is for OBB/OCC hard pack.

For more information please contact:

John Dixie at 647-777-3366 (Toll-Free: 888-277-2762, Ext. 3366) email: jdixie@csr.org

CSR, 26 Wellington Street East, Suite 601, Toronto, Ontario, M5E 1S2

website: www.csr.org