



# The Price Sheet

Spot Market Price Trends as of February 16, 2007

## MONTHLY AVERAGES (CDN\$/Metric Tonne)

	Mar 2006	April 2006	May 2006	June 2006	July 2006	Aug 2006	Sept 2006	Oct 2006	Nov 2006	Dec 2006	Jan 2007	Feb 2007
Aluminum Cans	2123	2301	2425	2175	2150	2100	2032	2065	2177	2207	2262	2376
Steel Cans	135	152	164	180	180	129	141	140	122	123	134	170
Glass (clear)	36	36	36	36	36	36	36	36	36	36	36	36
Glass (mixed)	(31)	(31)	(31)	(31)	(31)	(31)	(31)	(31)	(31)	(31)	(31)	(31)
PET (mixed)	404	397	340	324	224	192	210	248	294	311	339	374
HDPE (mixed)	811	682	524	487	495	440	421	423	380	387	393	433
Plastic Tubs & Lids	132	162	132	133	134	117	135	125	127	109	107	107
Film Plastic	162	159	154	145	146	141	130	111	115	54	48	42
Polystyrene	75	75	75	75	75	75	75	75	75	75	75	75
Newspaper (ONP #8)	87	88	85	84	84	95	94	96	96	99	99	124
Corrugated (OCC)	72	81	78	79	94	99	89	86	79	81	82	116
Hardpack (OBB/OCC)	47	50	46	46	60	63	51	54	47	50	56	70
Boxboard (OBB)	37	39	38	40	43	45	45	43	43	42	46	64
Polycoat Containers	54	66	46	50	53	59	62	66	66	73	70	67
<b>Composite Index</b>	<b>114</b>	<b>117</b>	<b>112</b>	<b>108</b>	<b>108</b>	<b>110</b>	<b>108</b>	<b>110</b>	<b>110</b>	<b>113</b>	<b>116</b>	<b>138</b>

## YEARLY AVERAGES (CDN\$/Metric Tonne)

	1994	1995	1996	1997	1998	1999	2000	2001	2002	2003	2004	2005	2006	2007
Aluminum Cans	1731	2045	2045	1827	1595	1608	1893	1700	1709	1619	1772	1763	2169	2319
Steel Cans							52	26	47	76	191	116	141	152
Glass (clear)	47	48	47	47	49	50	50	31	29	34	38	36	36	36
Glass (mixed)			0	(4)	(25)	(20)	(15)	(15)	(15)	(19)	(12)	(31)	(31)	(31)
PET (mixed)	181	650	650	155	300	144	326	324	166	278	432	507	314	357
HDPE (mixed)	259	345	356	447	226	211	373	257	233	364	428	683	565	413
Plastic Tubs & Lids		100	100	76	66	3	5	5	0	12	51	104	128	107
Film Plastic	40	40	40	(4)	(5)	(12)	7	26	0	8	55	148	137	45
Polystyrene	88	110	125	125	125	125	125	125	75	75	75	75	75	75
Newspaper (ONP #8)	80	214	159	31	48	76	118	76	100	99	114	101	89	111
Corrugated (OCC)	94	159	214	97	73	99	112	55	106	89	114	95	80	99
Hardpack (OBB/OCC)	38	159	120	5	17	20	65	38	63	62	75	68	50	63
Boxboard (OBB)										43	62	53	41	55
Polycoat Containers		189	198	99	26	24	83	57	58	64	67	66	59	69
<b>Composite Index</b>							<b>134</b>	<b>95</b>	<b>113</b>	<b>114</b>	<b>131</b>	<b>124</b>	<b>111</b>	<b>127</b>

☐ Indicates FOB the municipality

▨ Indicates delivery to mill or industr

Notes:

1) Prices are for baled post-consumer residential materials (except glass, which is loose).

2) Prices are compiled from a range of municipal programs across Ontario combined with information from industry representatives.

Prices may not be the same as actual prices being paid in any given program.

3) The CSR Composite Index is calculated using the overall composition of residential Blue Box material recovered and marketed in Ontario as reported from the approved 2004 WDO datacall with some additional allocations to material categories. It does not include mixed plastics. Mixed glass includes coloured glass. ONP8 includes a quantity of lower grade papers sold at lower prices. Composition figures are updated annually. Details available upon request.

For more information please contact:

John Dixie at 647-777-3366 (Toll-Free: 888-277-2762, Ext. 3366) email: [jdixie@csr.org](mailto:jdixie@csr.org)

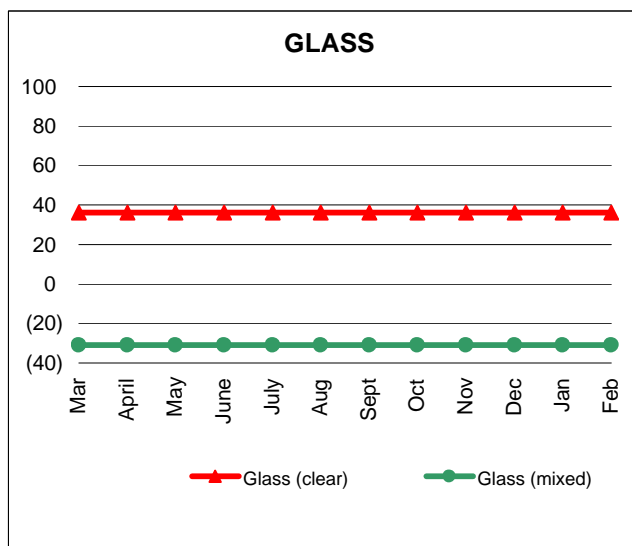
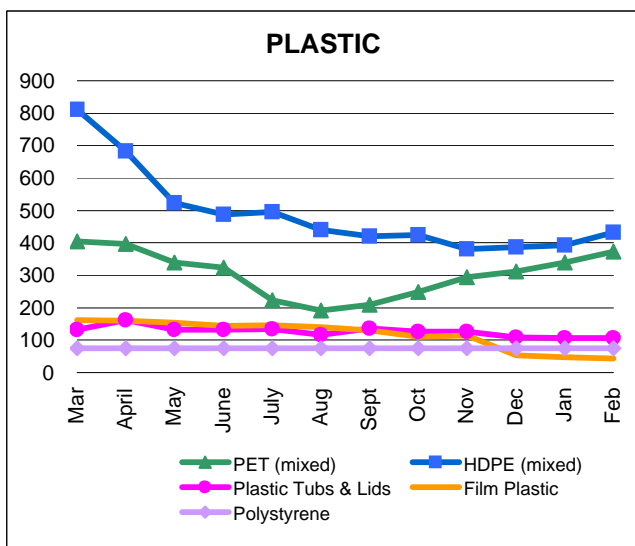
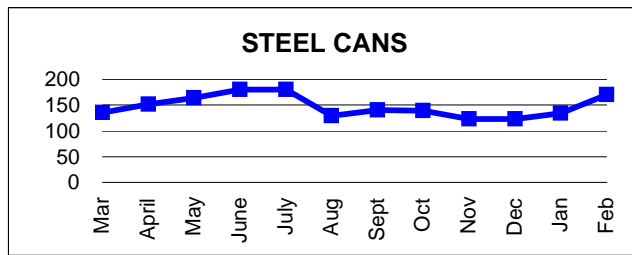
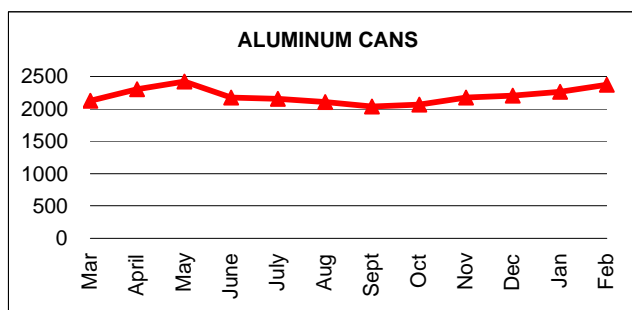
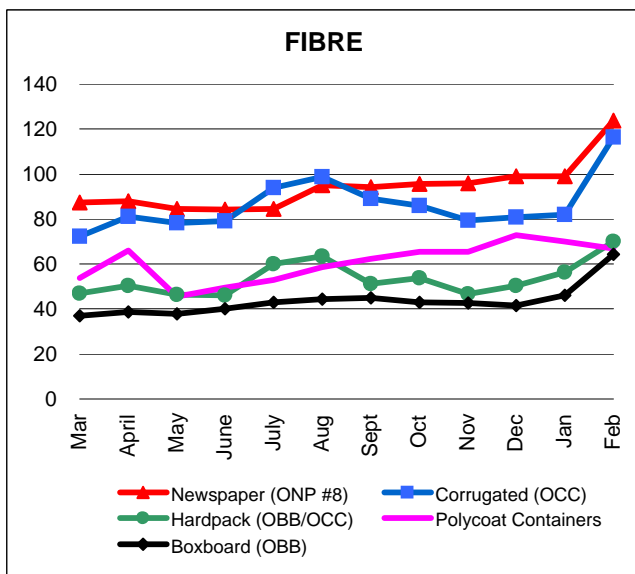
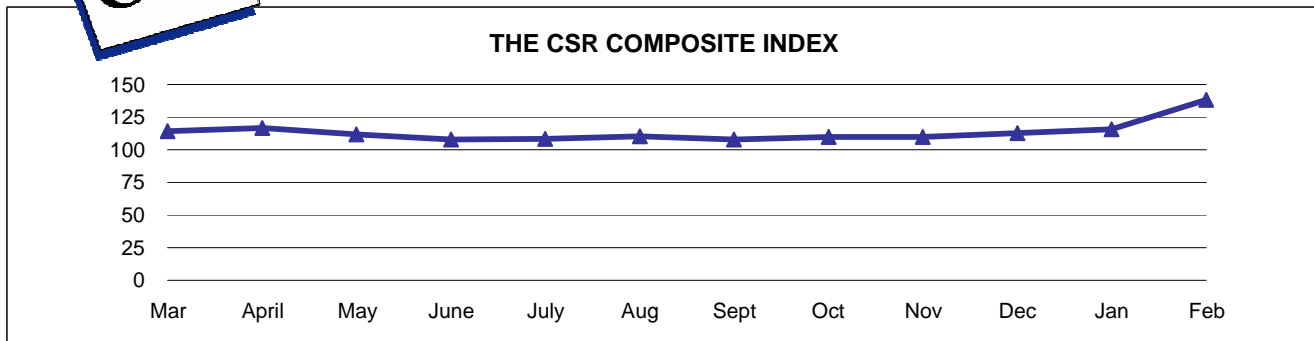
CSR, 26 Wellington Street East, Suite 601, Toronto, Ontario, M5E 1S2

website: [www.csr.org](http://www.csr.org)



# The Price Sheet

Monthly Averages from March 2006 to February 2007  
(CDN\$/Metric Tonne)

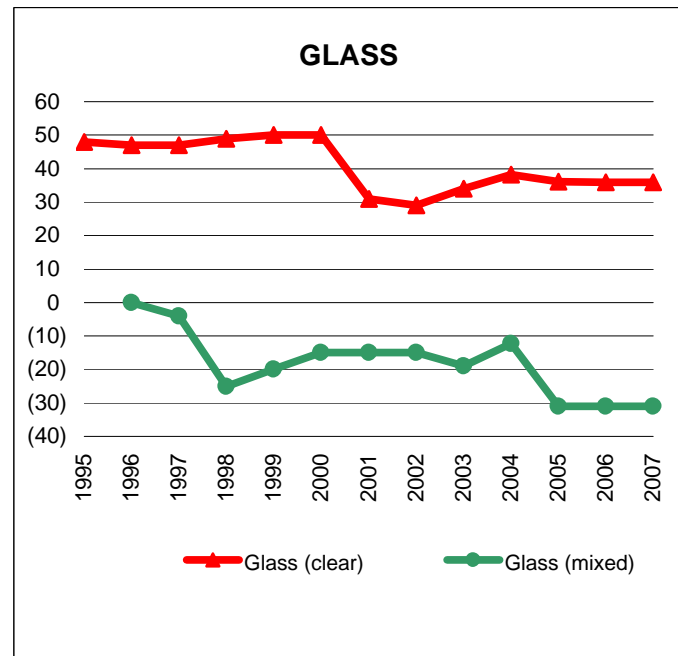
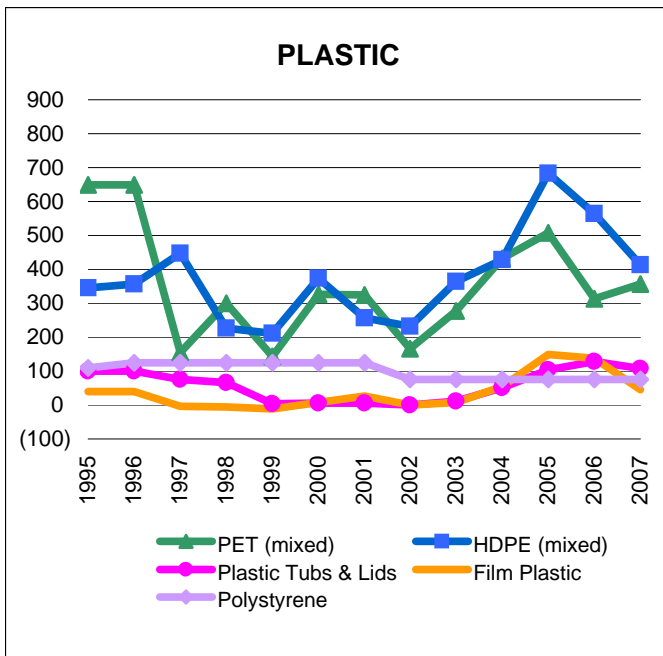
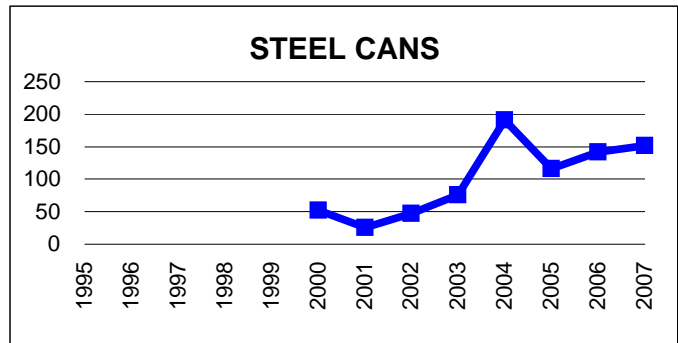
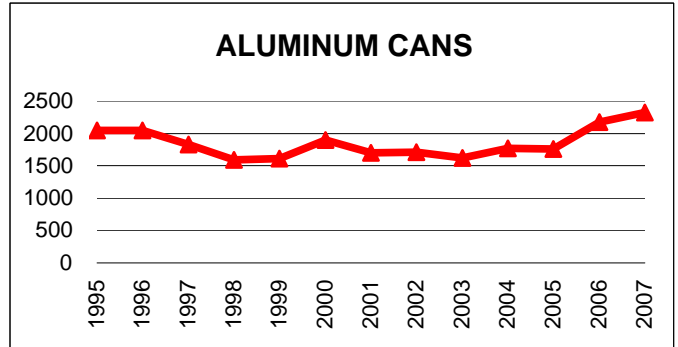
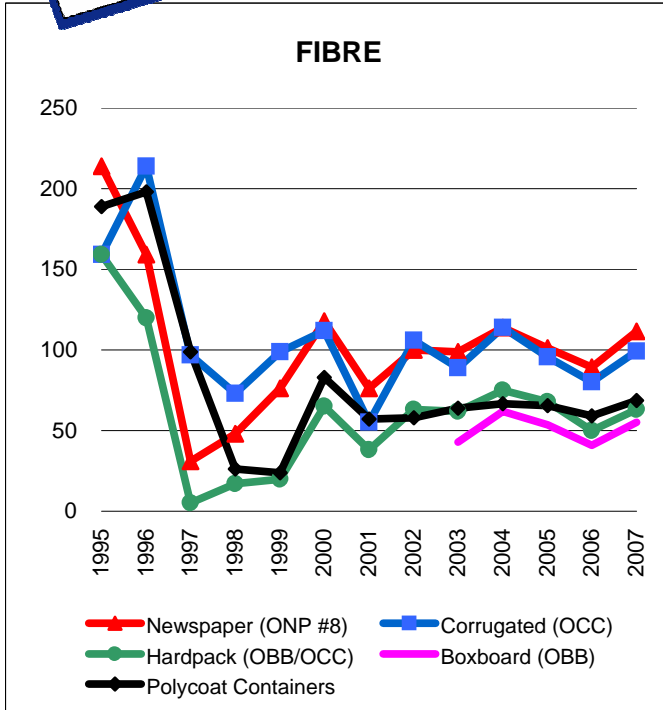


Graphs produced from Monthly Averages Table



# The Price Sheet

## Historical Yearly Averages (CDN\$/Metric Tonne)



Graphs produced from Yearly Averages Table