



# The Price Sheet

## Spot Market Price Trends as of November 17, 2006

### MONTHLY AVERAGES (CDN\$/Metric Tonne)

	Dec 2005	Jan 2006	Feb 2006	Mar 2006	April 2006	May 2006	June 2006	July 2006	Aug 2006	Sept 2006	Oct 2006	Nov 2006
Aluminum Cans	1824	2025	2247	2123	2301	2425	2175	2150	2100	2032	2065	2177
Steel Cans	119	107	124	135	152	164	180	180	129	141	140	122
Glass (clear)	36	36	36	36	36	36	36	36	36	36	36	36
Glass (mixed)	(31)	(31)	(31)	(31)	(31)	(31)	(31)	(31)	(31)	(31)	(31)	(31)
PET (mixed)	419	413	408	404	397	340	324	224	192	210	248	294
HDPE (mixed)	832	862	863	811	682	524	487	495	440	421	423	380
Plastic Tubs & Lids	115	115	115	132	162	132	133	134	117	135	125	127
Film Plastic	166	167	163	162	159	154	145	146	141	130	111	115
Polystyrene	75	75	75	75	75	75	75	75	75	75	75	75
Newspaper (ONP #8)	81	83	81	87	88	85	84	84	95	94	96	96
Corrugated (OCC)	65	63	62	72	81	78	79	94	99	89	86	79
Hardpack (OBB/OCC)	44	44	42	47	50	46	46	60	63	51	54	47
Boxboard (OBB)	42	39	37	37	39	38	40	43	45	45	43	43
Polycoat Containers	60	60	56	54	66	46	50	53	59	62	66	66
<b>Composite Index</b>	<b>109</b>	<b>112</b>	<b>114</b>	<b>114</b>	<b>117</b>	<b>112</b>	<b>108</b>	<b>108</b>	<b>110</b>	<b>108</b>	<b>110</b>	<b>110</b>

### YEARLY AVERAGES (CDN\$/Metric Tonne)

	1994	1995	1996	1997	1998	1999	2000	2001	2002	2003	2004	2005	2006
Aluminum Cans	1731	2045	2045	1827	1595	1608	1893	1700	1709	1619	1772	1763	2166
Steel Cans							52	26	47	76	191	116	143
Glass (clear)	47	48	47	47	49	50	50	31	29	34	38	36	36
Glass (mixed)			0	(4)	(25)	(20)	(15)	(15)	(15)	(19)	(12)	(31)	(31)
PET (mixed)	181	650	650	155	300	144	326	324	166	278	432	507	314
HDPE (mixed)	259	345	356	447	226	211	373	257	233	364	428	683	581
Plastic Tubs & Lids		100	100	76	66	3	5	5	0	12	51	104	130
Film Plastic	40	40	40	(4)	(5)	(12)	7	26	0	8	55	148	145
Polystyrene	88	110	125	125	125	125	125	125	75	75	75	75	75
Newspaper (ONP #8)	80	214	159	31	48	76	118	76	100	99	114	101	89
Corrugated (OCC)	94	159	214	97	73	99	112	55	106	89	114	95	80
Hardpack (OBB/OCC)	38	159	120	5	17	20	65	38	63	62	75	68	50
Boxboard (OBB)										43	62	53	41
Polycoat Containers		189	198	99	26	24	83	57	58	64	67	66	58
<b>Composite Index</b>							<b>134</b>	<b>95</b>	<b>113</b>	<b>114</b>	<b>131</b>	<b>124</b>	<b>111</b>

☐ Indicates FOB the municipality

▨ Indicates delivery to mill or industry

#### Notes:

- Prices are for baled post-consumer residential materials (except glass, which is loose).
- Prices are compiled from a range of municipal programs across Ontario combined with information from industry representatives.  
Prices may not be the same as actual prices being paid in any given program.
- The CSR Composite Index is calculated using the overall composition of residential Blue Box material recovered and marketed in Ontario as reported from the approved 2004 WDO datacall with some additional allocations to material categories. It does not include mixed plastics. Mixed glass includes coloured glass. ONP8 includes a quantity of lower grade papers sold at lower prices. Composition figures are updated annually. Details available upon request.

For more information please contact:

John Dixie at 647-777-3366 (Toll-Free: 888-277-2762, Ext. 3366) email: [jdixie@csr.org](mailto:jdixie@csr.org)

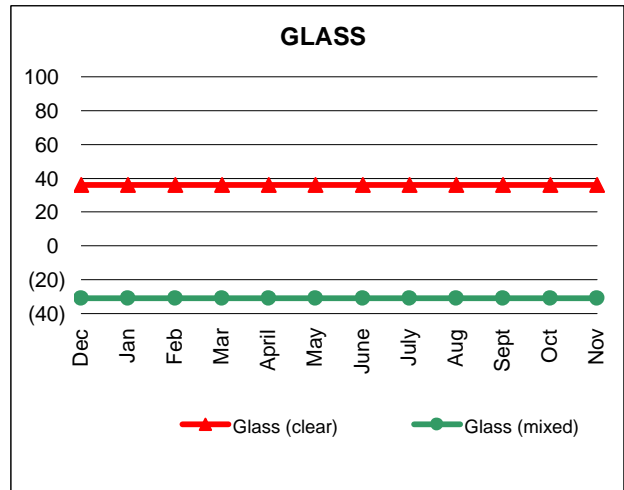
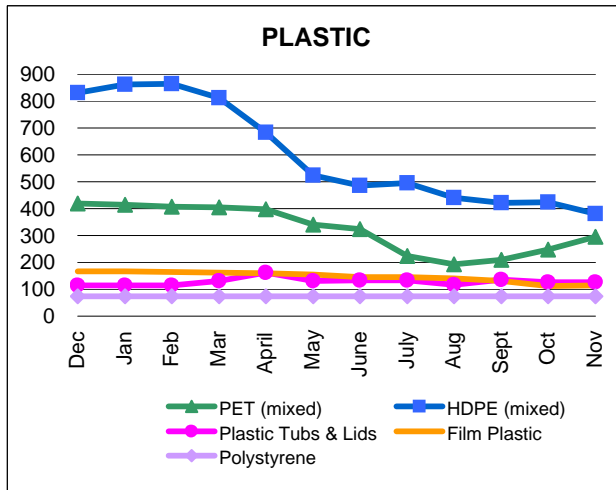
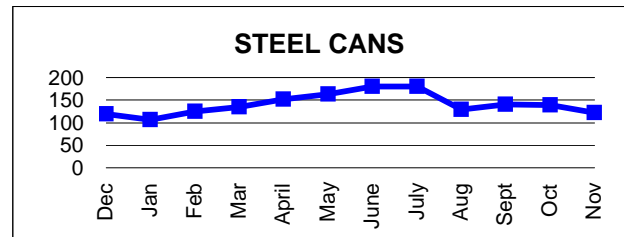
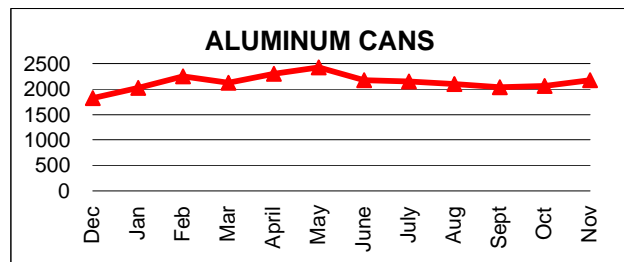
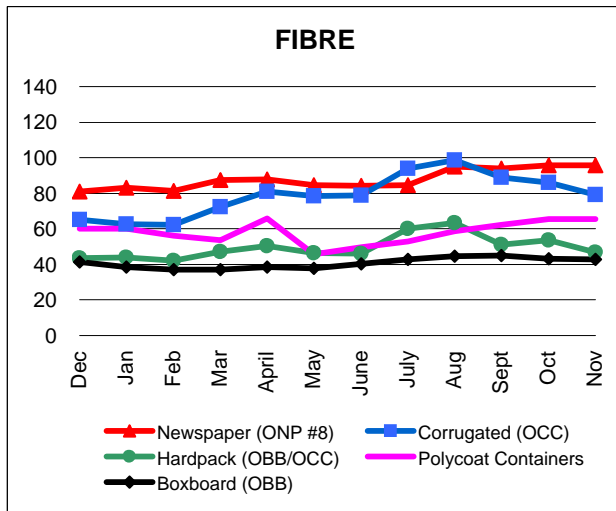
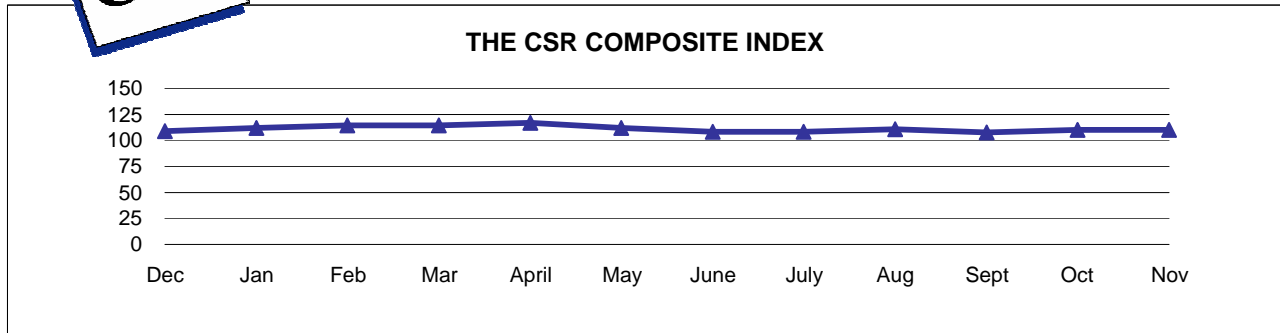
CSR, 26 Wellington Street East, Suite 601, Toronto, Ontario, M5E 1S2

website: [www.csr.org](http://www.csr.org)



# The Price Sheet

Monthly Averages from December 2005 to November 2006  
(CDN\$/Metric Tonne)

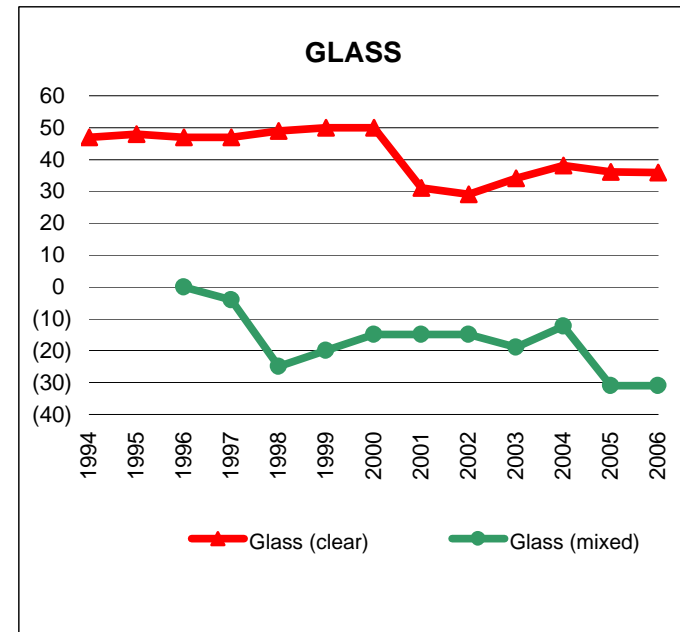
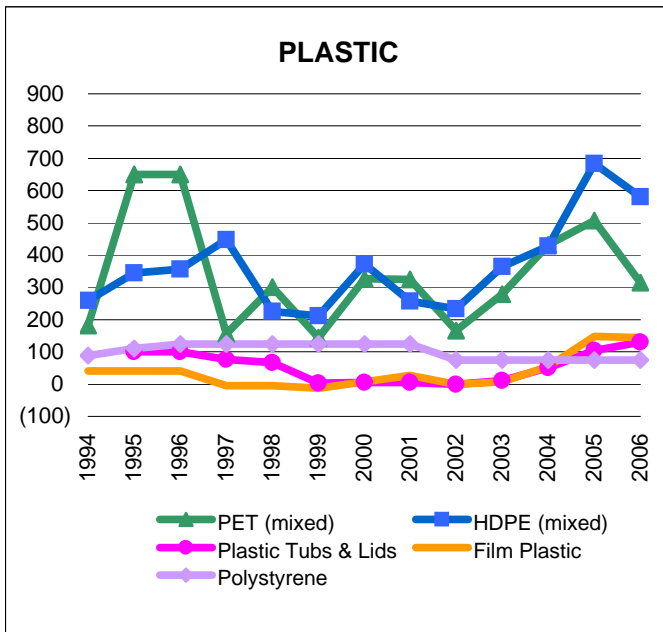
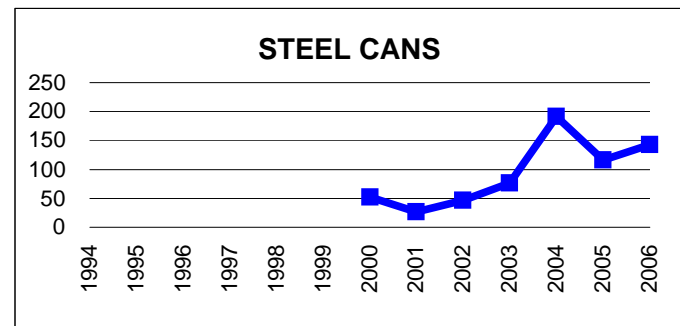
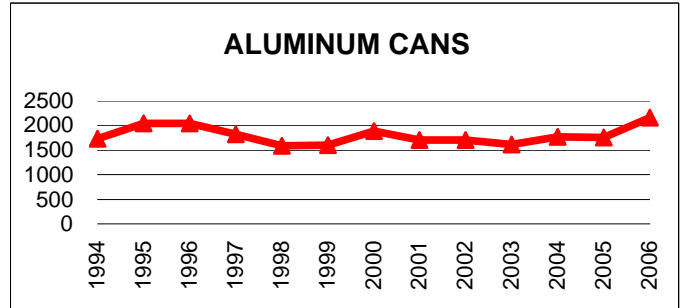
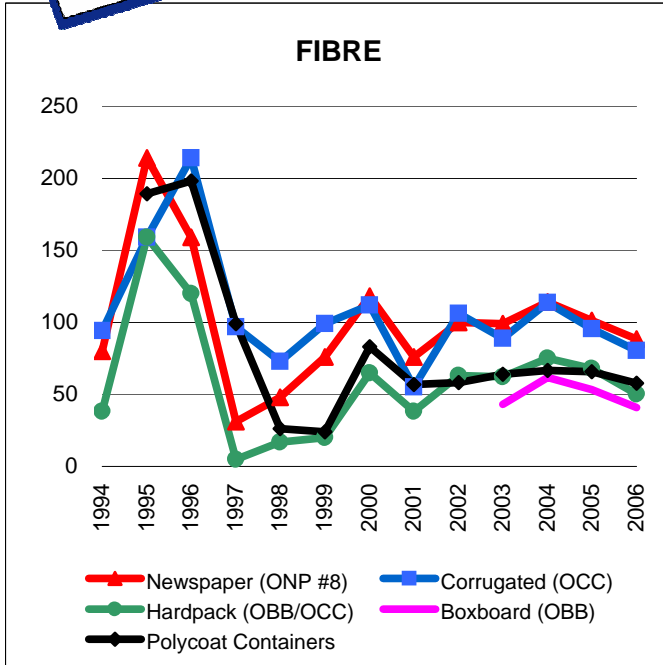


Graphs produced from Monthly Averages Table



# The Price Sheet

## Historical Yearly Averages (CDN\$/Metric)



Graphs produced from Yearly Averages Table