



The Price Sheet

Spot Market Price Trends as of Sept 18, 2006

MONTHLY AVERAGES (CDN\$/Metric Tonne)

	Oct 2005	Nov 2005	Dec 2005	Jan 2006	Feb 2006	Mar 2006	April 2006	May 2006	June 2006	July 2006	Aug 2006	Sept 2006
Aluminum Cans	1606	1746	1824	2025	2247	2123	2301	2425	2175	2150	2100	2032
Steel Cans	80	129	119	107	124	135	152	164	180	180	129	141
Glass (clear)	36	36	36	36	36	36	36	36	36	36	36	36
Glass (mixed)	(31)	(31)	(31)	(31)	(31)	(31)	(31)	(31)	(31)	(31)	(31)	(31)
PET (mixed)	490	466	419	413	408	404	397	340	324	224	192	210
HDPE (mixed)	727	828	832	862	863	811	682	524	487	495	440	421
Plastic Tubs & Lids	117	123	115	115	115	132	162	132	133	134	117	135
Film Plastic	152	162	166	167	163	162	159	154	145	146	141	130
Polystyrene	75	75	75	75	75	75	75	75	75	75	75	75
Newspaper (ONP #8)	94	92	81	83	81	87	88	85	84	84	95	94
Corrugated (OCC)	80	74	65	63	62	72	81	78	79	94	99	89
Hardpack (OBB/OCC)	59	56	44	44	42	47	50	46	46	60	63	51
Boxboard (OBB)	50	45	42	39	37	37	39	38	40	43	45	45
Polycoat Containers	60	60	60	60	56	54	66	46	50	53	59	62
Composite Index	114	117	109	112	114	114	117	112	108	108	110	108

YEARLY AVERAGES (CDN\$/Metric Tonne)

	1994	1995	1996	1997	1998	1999	2000	2001	2002	2003	2004	2005	2006
Aluminum Cans	1731	2045	2045	1827	1595	1608	1893	1700	1709	1619	1772	1763	2175
Steel Cans							52	26	47	76	191	116	146
Glass (clear)	47	48	47	47	49	50	50	31	29	34	38	36	36
Glass (mixed)			0	(4)	(25)	(20)	(15)	(15)	(15)	(19)	(12)	(31)	(31)
PET (mixed)	181	650	650	155	300	144	326	324	166	278	432	507	324
HDPE (mixed)	259	345	356	447	226	211	373	257	233	364	428	683	621
Plastic Tubs & Lids		100	100	76	66	3	5	5	0	12	51	104	131
Film Plastic	40	40	40	(4)	(5)	(12)	7	26	0	8	55	148	152
Polystyrene	88	110	125	125	125	125	125	125	75	75	75	75	75
Newspaper (ONP #8)	80	214	159	31	48	76	118	76	100	99	114	101	87
Corrugated (OCC)	94	159	214	97	73	99	112	55	106	89	114	95	80
Hardpack (OBB/OCC)	38	159	120	5	17	20	65	38	63	62	75	68	50
Boxboard (OBB)										43	62	53	40
Polycoat Containers		189	198	99	26	24	83	57	58	64	67	66	56
Composite Index							134	95	113	114	131	124	112

☐ Indicates FOB the municipality

▨ Indicates delivery to mill or industry

Notes:

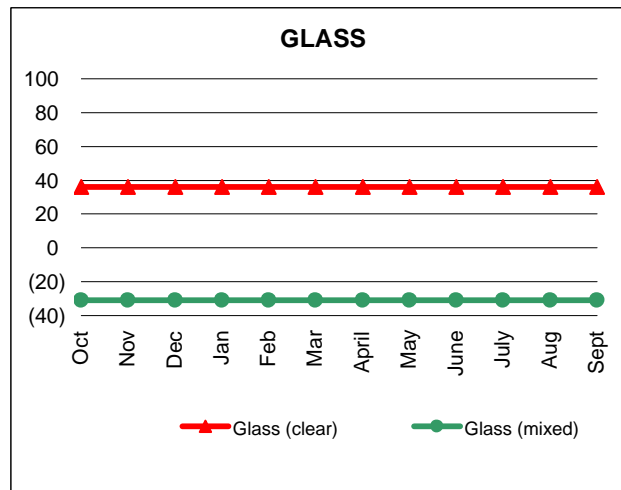
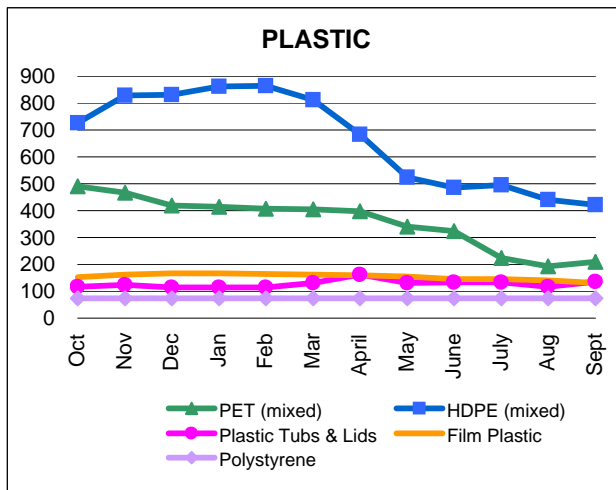
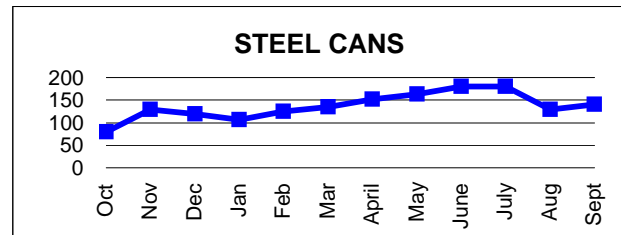
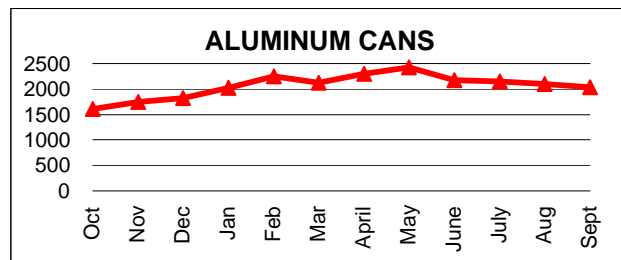
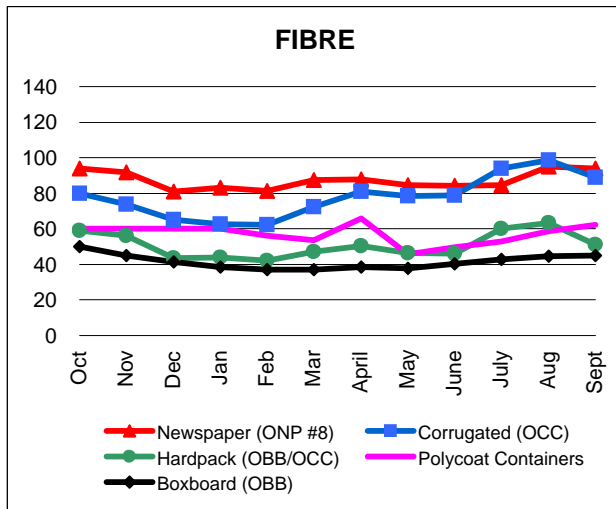
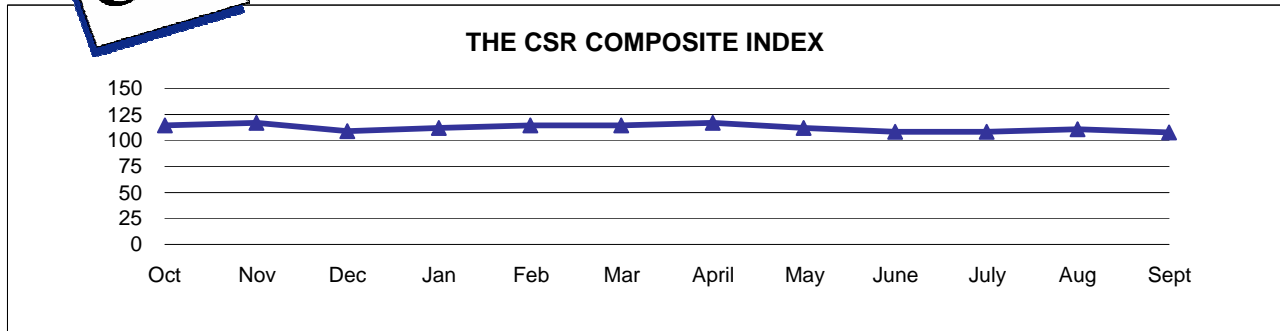
- Prices are for baled post-consumer residential materials (except glass, which is loose).
- Prices are compiled from a range of municipal programs across Ontario combined with information from industry representatives.
Prices may not be the same as actual prices being paid in any given program.
- The CSR Composite Index is calculated using the overall composition of residential Blue Box material recovered and marketed in Ontario as reported from the approved 2004 WDO datacall with some additional allocations to material categories. It does not include mixed plastics. Mixed glass includes coloured glass. ONP8 includes a quantity of lower grade papers sold at lower prices. Composition figures are updated annually. Details available upon request.

For more information please contact:
 John Dixie at 647-777-3366 (Toll-Free: 888-277-2762, Ext. 3366) email: jdixie@csr.org
 CSR, 26 Wellington Street East, Suite 601, Toronto, Ontario, M5E 1S2
 website: www.csr.org



The Price Sheet

Monthly Averages from October 2005 to September 2006
(CDN\$/Metric Tonne)

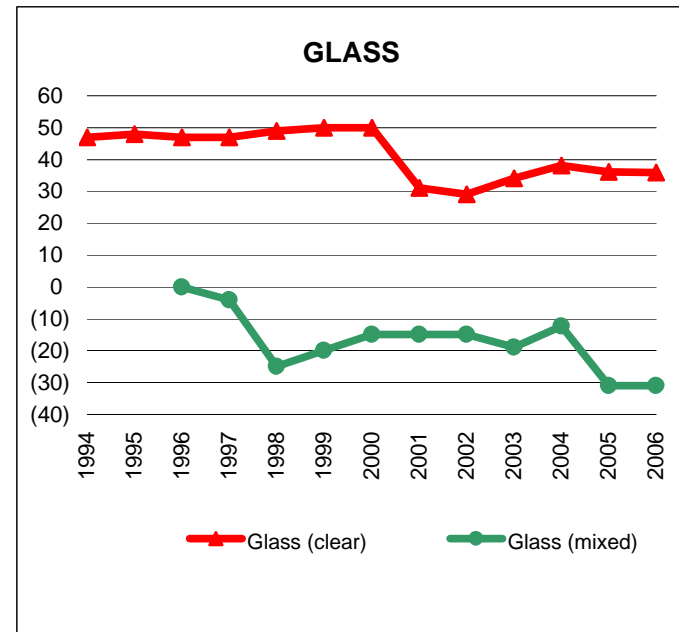
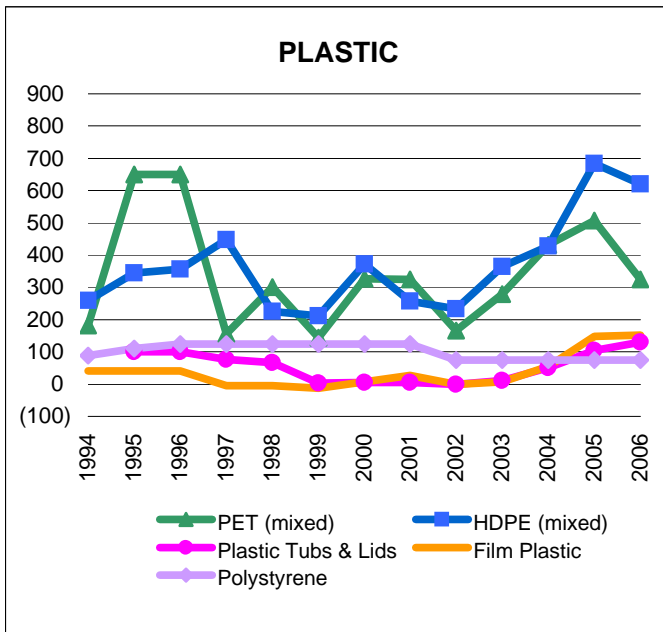
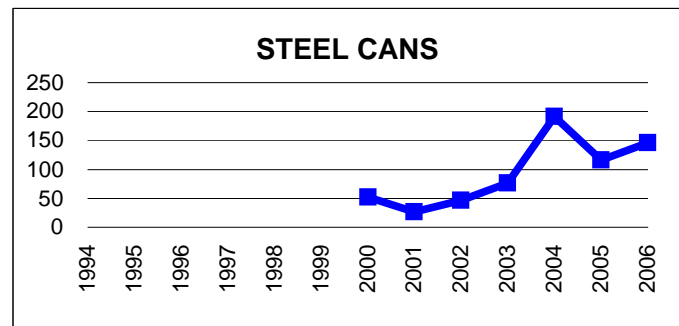
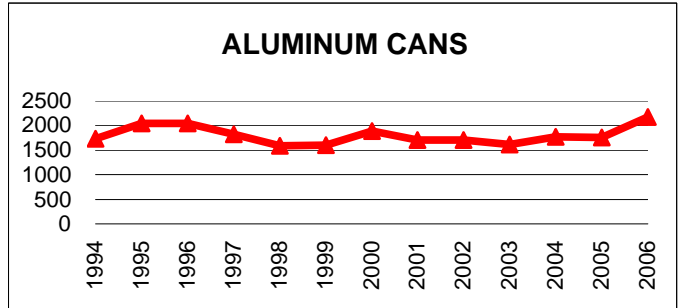
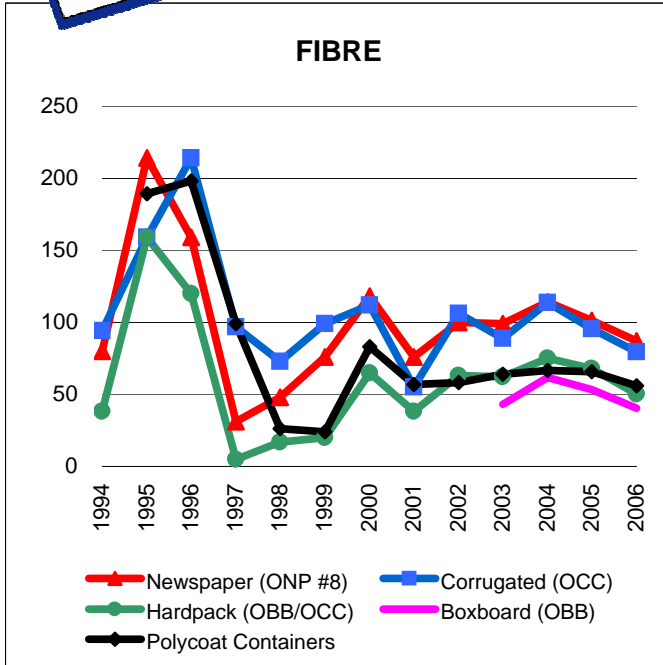


Graphs produced from Monthly Averages Table



The Price Sheet

Historical Yearly Averages (CDN\$/Metric Tonne)



Graphs produced from Yearly Averages Table



The Price Sheet

National Market Prices as of September 18, 2006

	QUARTERLY AVERAGES (CDN\$/Metric Tonne)											
	Western Canada				Central (Ontario)				Eastern Canada			
	Q4 Dec 05	Q1 Mar 06	Q2 Jun 06	Q3 Sep 06	Q4 Dec 05	Q1 Mar 06	Q2 Jun 06	Q3 Sep 06	Q4 Dec 05	Q1 Mar 06	Q2 Jun 06	Q3 Sep 06
Aluminum Cans	1842	2224	1960	2002	1824	2123	2175	2032	1932	2201	2064	2085
Steel Cans	100	n/a	n/a	n/a	119	135	180	141	86	78	110	107
Glass (clear/flint)	n/a	n/a	n/a	n/a	36	36	36	36	18	n/a	n/a	n/a
Glass (coloured/mixed)	n/a	n/a	n/a	n/a	(31)	(31)	(31)	(31)	n/a	n/a	n/a	n/a
PET (mixed)	467	469	421	413	419	404	324	210	450	441	342	290
HDPE (mixed)	n/a	n/a	n/a	n/a	832	811	487	421	853	n/a	n/a	n/a
HDPE (natural)	737	758	n/a	472	n/a	n/a	n/a	n/a	n/a	n/a	n/a	n/a
ONP (#8)	103	93	n/a	n/a	81	87	84	94	92	87	83	83
ONP (#6)	0	n/a	n/a	n/a	n/a	n/a	n/a	n/a	72	73	71	77
OCC	82	74	n/a	n/a	65	72	79	89	83	75	79	87
Residential (soft) Mix⁴	n/a	n/a	n/a	n/a	44	47	46	51	n/a	n/a	n/a	n/a
Polycoat Containers	n/a	n/a	n/a	n/a	60	54	50	62	n/a	n/a	n/a	n/a

Indicates FOB the municipality
 Indicates delivery to mill or industry

Notes:

- 1) Prices are for baled post-consumer residential materials (except glass, which is loose).
- 2) Prices are compiled from a range of municipal programs across Canada combined with information from industry representatives. Prices may not be the same as actual prices being paid in any given program.
- 3) Western Canada: BC, Alberta, Saskatchewan, Manitoba. Central Canada: Ontario. Eastern Canada: Quebec, PEI, Nova Scotia, New Brunswick, Newfoundland
- 4) Pricing for Central Canada (Ontario) is for OBB/OCC hard pack.

For more information please contact:
 John Dixie at 647-777-3366 (Toll-Free: 888-277-2762, Ext. 3366) email: jdixie@csr.org
 CSR, 26 Wellington Street East, Suite 601, Toronto, Ontario, M5E 1S2
 website: www.csr.org