



The Price Sheet

Spot Market Price Trends as of Aug 17, 2006

MONTHLY AVERAGES (CDN\$/Metric Tonne)

	Sept 2005	Oct 2005	Nov 2005	Dec 2005	Jan 2006	Feb 2006	Mar 2006	April 2006	May 2006	June 2006	July 2006	Aug 2006
Aluminum Cans	1619	1606	1746	1824	2025	2247	2123	2301	2425	2175	2150	2100
Steel Cans	132	80	129	119	107	124	135	152	164	180	180	129
Glass (clear)	36	36	36	36	36	36	36	36	36	36	36	36
Glass (mixed)	(31)	(31)	(31)	(31)	(31)	(31)	(31)	(31)	(31)	(31)	(31)	(31)
PET (mixed)	466	490	466	419	413	408	404	397	340	324	224	192
HDPE (mixed)	646	727	828	832	862	863	811	682	524	487	495	440
Plastic Tubs & Lids	82	117	123	115	115	115	132	162	132	133	134	117
Film Plastic	141	152	162	166	167	163	162	159	154	145	146	141
Polystyrene	75	75	75	75	75	75	75	75	75	75	75	75
Newspaper (ONP #8)	99	94	92	81	83	81	87	88	85	84	84	95
Corrugated (OCC)	89	80	74	65	63	62	72	81	78	79	94	99
Hardpack (OBB/OCC)	61	59	56	44	44	42	47	50	46	46	60	63
Boxboard (OBB)	54	50	45	42	39	37	37	39	38	40	43	45
Polycoat Containers	63	60	60	60	60	56	54	66	46	50	53	59
Composite Index	119	114	117	109	112	114	114	117	112	108	108	110

YEARLY AVERAGES (CDN\$/Metric Tonne)

	1994	1995	1996	1997	1998	1999	2000	2001	2002	2003	2004	2005	2006
Aluminum Cans	1731	2045	2045	1827	1595	1608	1893	1700	1709	1619	1772	1763	2193
Steel Cans							52	26	47	76	191	116	146
Glass (clear)	47	48	47	47	49	50	50	31	29	34	38	36	36
Glass (mixed)			0	(4)	(25)	(20)	(15)	(15)	(15)	(19)	(12)	(31)	(31)
PET (mixed)	181	650	650	155	300	144	326	324	166	278	432	507	338
HDPE (mixed)	259	345	356	447	226	211	373	257	233	364	428	683	646
Plastic Tubs & Lids		100	100	76	66	3	5	5	0	12	51	104	130
Film Plastic	40	40	40	(4)	(5)	(12)	7	26	0	8	55	148	155
Polystyrene	88	110	125	125	125	125	125	125	75	75	75	75	75
Newspaper (ONP #8)	80	214	159	31	48	76	118	76	100	99	114	101	86
Corrugated (OCC)	94	159	214	97	73	99	112	55	106	89	114	95	79
Hardpack (OBB/OCC)	38	159	120	5	17	20	65	38	63	62	75	68	50
Boxboard (OBB)										43	62	53	40
Polycoat Containers		189	198	99	26	24	83	57	58	64	67	66	55
Composite Index							134	95	113	114	131	124	112

☐ Indicates FOB the municipality

▒ Indicates delivery to mill or industry

Notes:

- Prices are for baled post-consumer residential materials (except glass, which is loose).
- Prices are compiled from a range of municipal programs across Ontario combined with information from industry representatives.
Prices may not be the same as actual prices being paid in any given program.
- The CSR Composite Index is calculated using the overall composition of residential Blue Box material recovered and marketed in Ontario as reported from the approved 2004 WDO datacall with some additional allocations to material categories. It does not include mixed plastics. Mixed glass includes coloured glass. ONP8 includes a quantity of lower grade papers sold at lower prices. Composition figures are updated annually. Details available upon request.

For more information please contact:

John Dixie at 647-777-3366 (Toll-Free: 888-277-2762, Ext. 3366) email: jdixie@csr.org

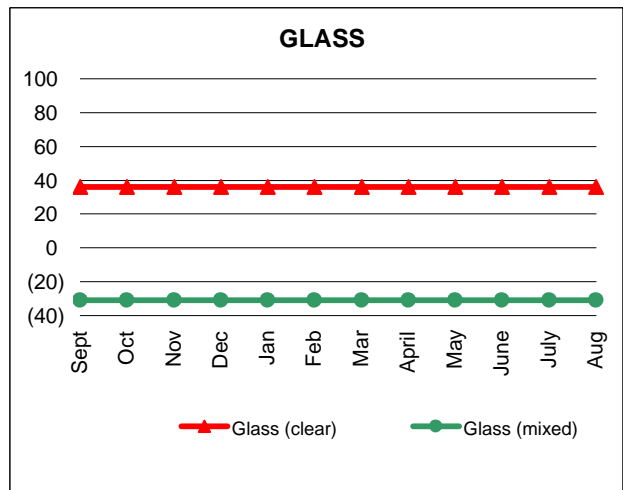
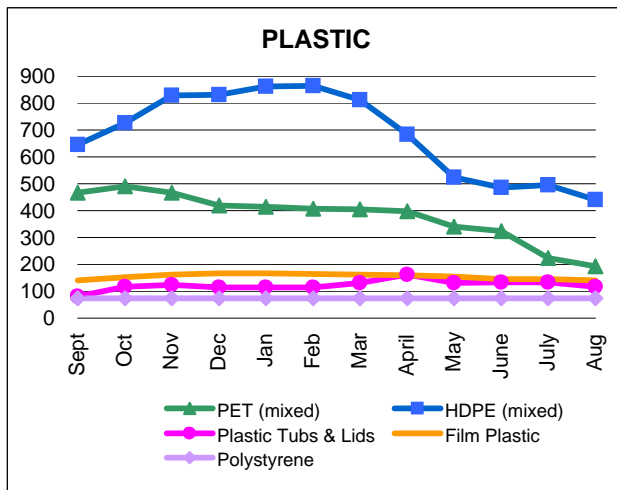
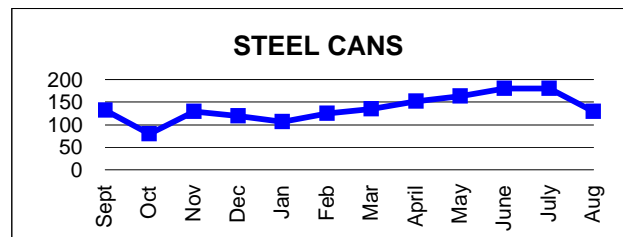
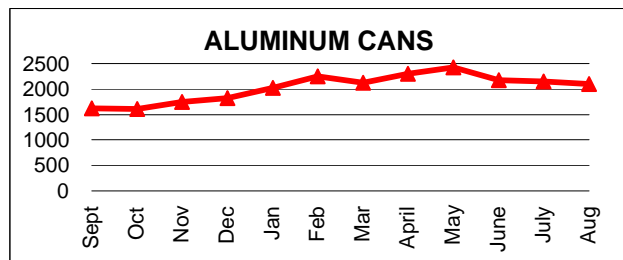
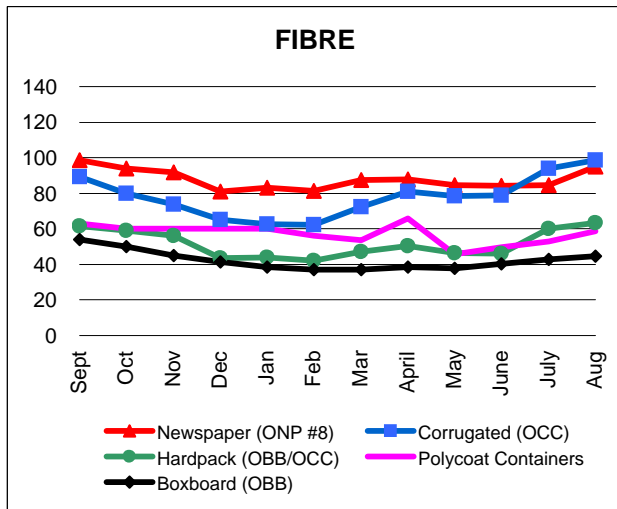
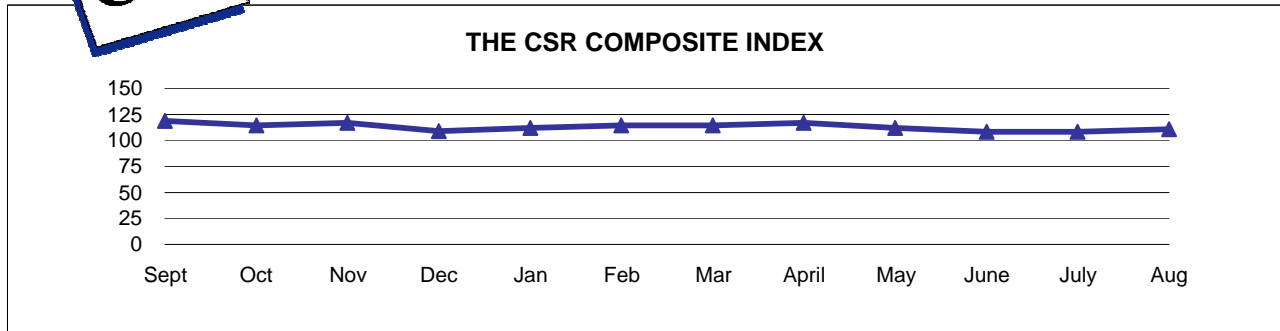
CSR, 26 Wellington Street East, Suite 601, Toronto, Ontario, M5E 1S2

website: www.csr.org



The Price Sheet

Monthly Averages from Sept 2005 to Aug 2006
(CDN\$/Metric Tonne)

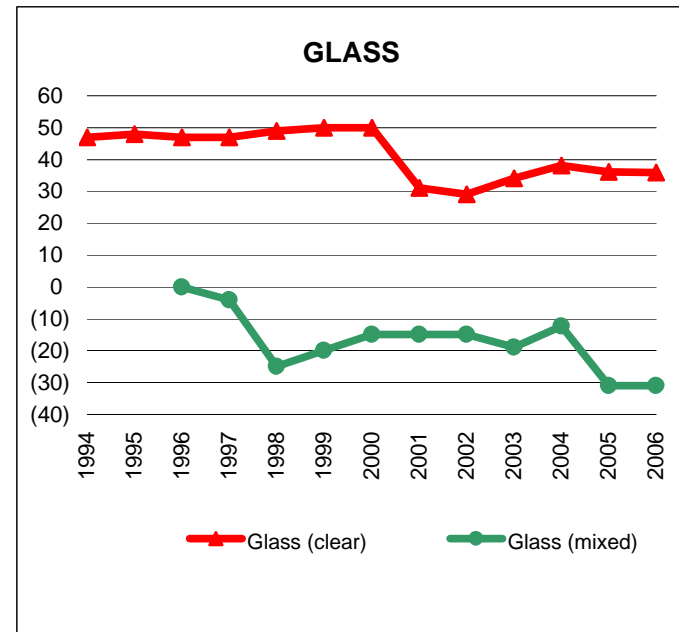
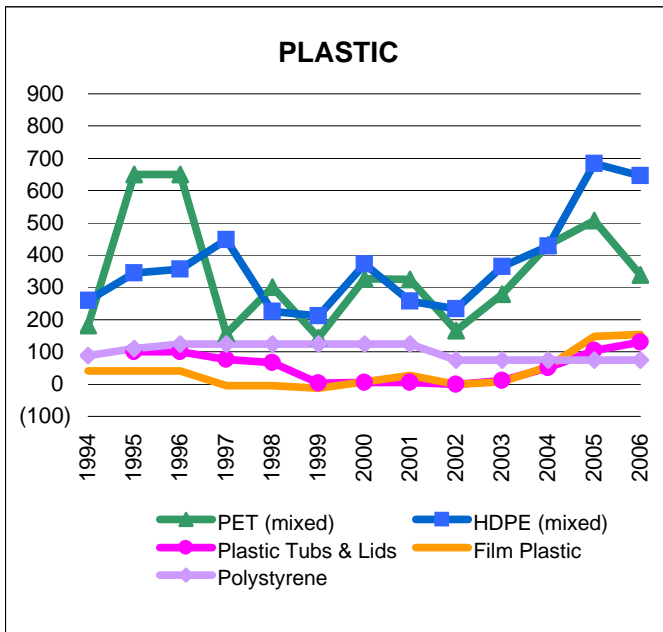
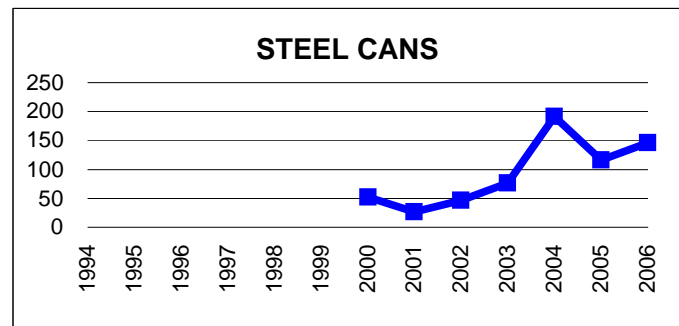
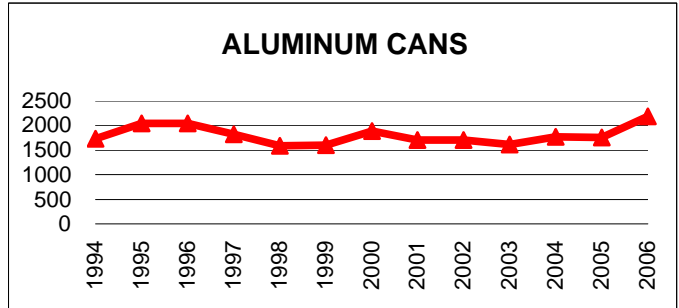
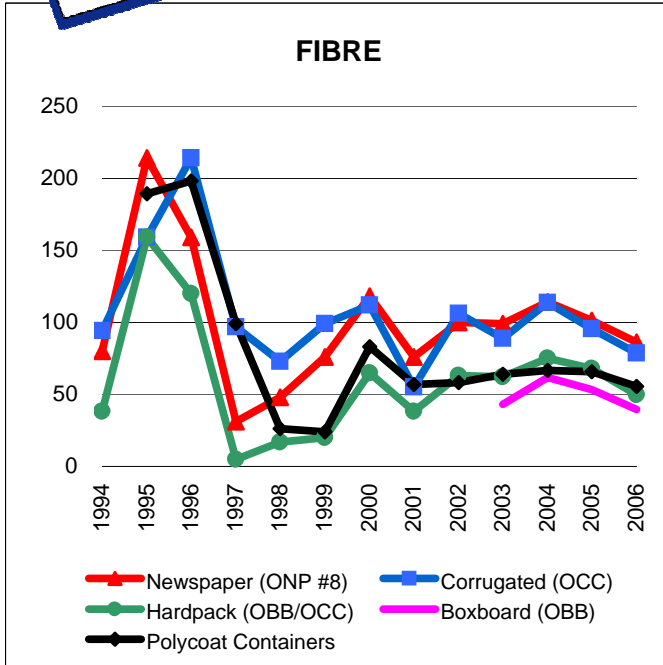


Graphs produced from Monthly Averages Table



The Price Sheet

Historical Yearly Averages (CDN\$/Metric Tonne)



Graphs produced from Yearly Averages Table