



The Price Sheet

Spot Market Price Trends as of June 18, 2006

MONTHLY AVERAGES (CDN\$/Metric Tonne)

	July 2005	Aug 2005	Sept 2005	Oct 2005	Nov 2005	Dec 2005	Jan 2006	Feb 2006	Mar 2006	April 2006	May 2006	June 2006
Aluminum Cans	1662	1667	1619	1606	1746	1824	2025	2247	2123	2301	2425	2175
Steel Cans	55	102	132	80	129	119	107	124	135	152	164	180
Glass (clear)	36	36	36	36	36	36	36	36	36	36	36	36
Glass (mixed)	(31)	(31)	(31)	(31)	(31)	(31)	(31)	(31)	(31)	(31)	(31)	(31)
PET (mixed)	558	501	466	490	466	419	413	408	404	397	340	324
HDPE (mixed)	565	598	646	727	828	832	862	863	811	682	524	487
Plastic Tubs & Lids	84	84	82	117	123	115	115	115	132	162	132	133
Film Plastic	136	131	141	152	162	166	167	163	162	159	154	145
Polystyrene	75	75	75	75	75	75	75	75	75	75	75	75
Newspaper (ONP #8)	100	99	99	94	92	81	83	81	87	88	85	84
Corrugated (OCC)	97	96	89	80	74	65	63	62	72	81	78	79
Hardpack (OBB/OCC)	65	64	61	59	56	44	44	42	47	50	46	46
Boxboard (OBB)	57	57	54	50	45	42	39	37	37	39	38	40
Polycoat Containers	63	64	63	60	60	60	60	56	54	66	46	50
Composite Index	119	119	119	114	117	109	112	114	114	117	112	108

YEARLY AVERAGES (CDN\$/Metric Tonne)

	1994	1995	1996	1997	1998	1999	2000	2001	2002	2003	2004	2005	2006
Aluminum Cans	1731	2045	2045	1827	1595	1608	1893	1700	1709	1619	1772	1763	2216
Steel Cans							52	26	47	76	191	116	144
Glass (clear)	47	48	47	47	49	50	50	31	29	34	38	36	36
Glass (mixed)			0	(4)	(25)	(20)	(15)	(15)	(15)	(19)	(12)	(31)	(31)
PET (mixed)	181	650	650	155	300	144	326	324	166	278	432	507	381
HDPE (mixed)	259	345	356	447	226	211	373	257	233	364	428	683	705
Plastic Tubs & Lids		100	100	76	66	3	5	5	0	12	51	104	131
Film Plastic	40	40	40	(4)	(5)	(12)	7	26	0	8	55	148	158
Polystyrene	88	110	125	125	125	125	125	125	75	75	75	75	75
Newspaper (ONP #8)	80	214	159	31	48	76	118	76	100	99	114	101	85
Corrugated (OCC)	94	159	214	97	73	99	112	55	106	89	114	95	73
Hardpack (OBB/OCC)	38	159	120	5	17	20	65	38	63	62	75	68	46
Boxboard (OBB)										43	62	53	38
Polycoat Containers		189	198	99	26	24	83	57	58	64	67	66	55
Composite Index							134	95	113	114	131	124	113

☐ Indicates FOB the municipality

▨ Indicates delivery to mill or industry

Notes:

- Prices are for baled post-consumer residential materials (except glass, which is loose).
- Prices are compiled from a range of municipal programs across Ontario combined with information from industry representatives.
Prices may not be the same as actual prices being paid in any given program.
- The CSR Composite Index is calculated using the overall composition of residential Blue Box material recovered and marketed in Ontario as reported from the approved 2004 WDO datacall with some additional allocations to material categories. It does not include mixed plastics. Mixed glass includes coloured glass. ONP8 includes a quantity of lower grade papers sold at lower prices. Composition figures are updated annually. Details available upon request.

For more information please contact:

John Dixie at 647-777-3366 (Toll-Free: 888-277-2762, Ext. 3366) email: jdixie@csr.org

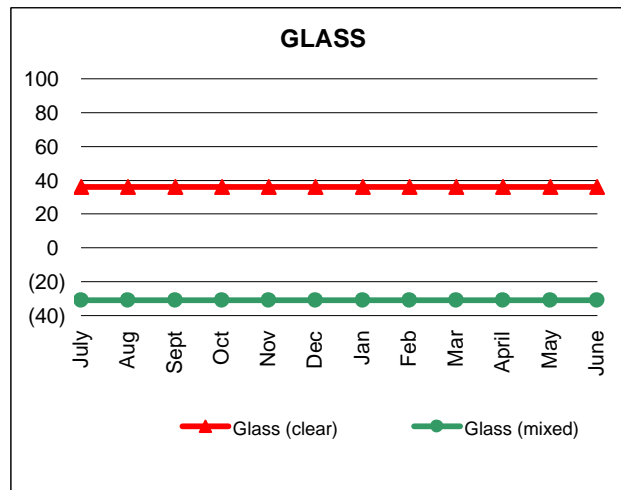
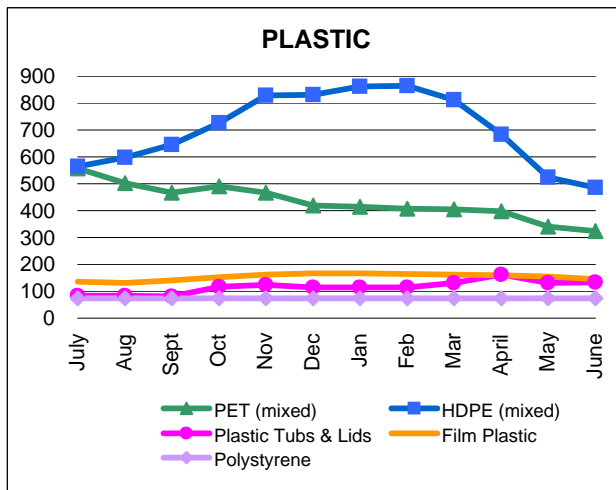
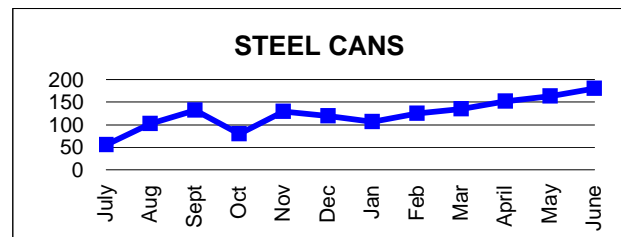
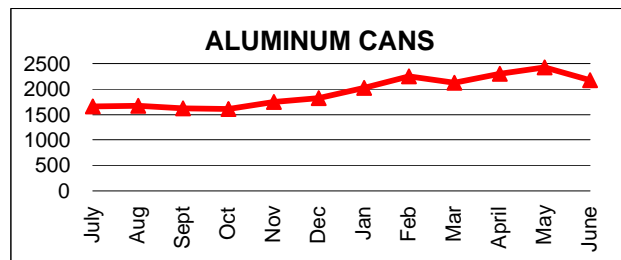
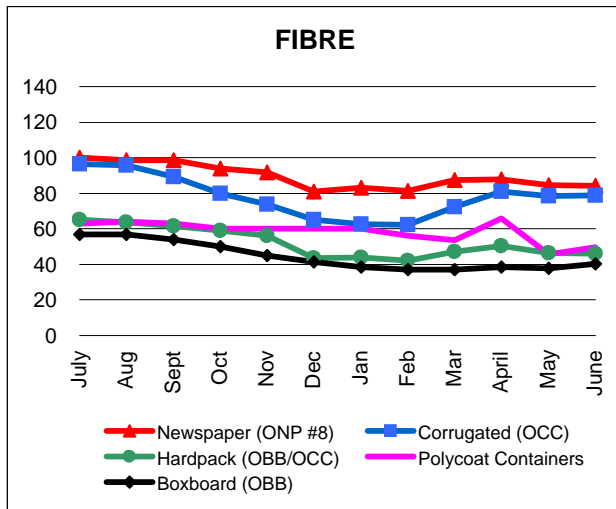
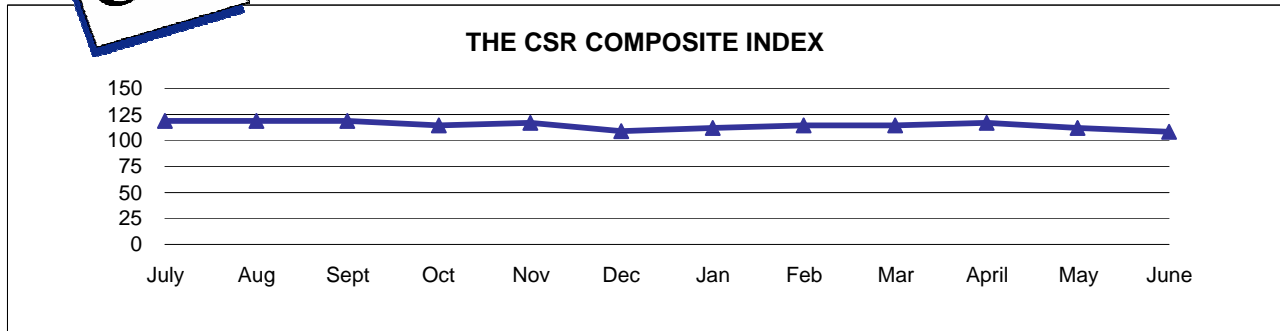
CSR, 26 Wellington Street East, Suite 601, Toronto, Ontario, M5E 1S2

website: www.csr.org



The Price Sheet

Monthly Averages from July 2005 to June 2006
(CDN\$/Metric Tonne)

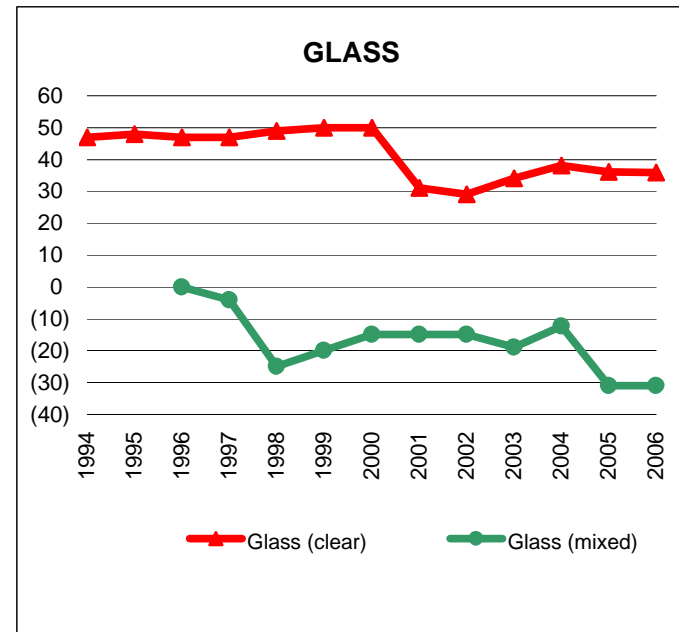
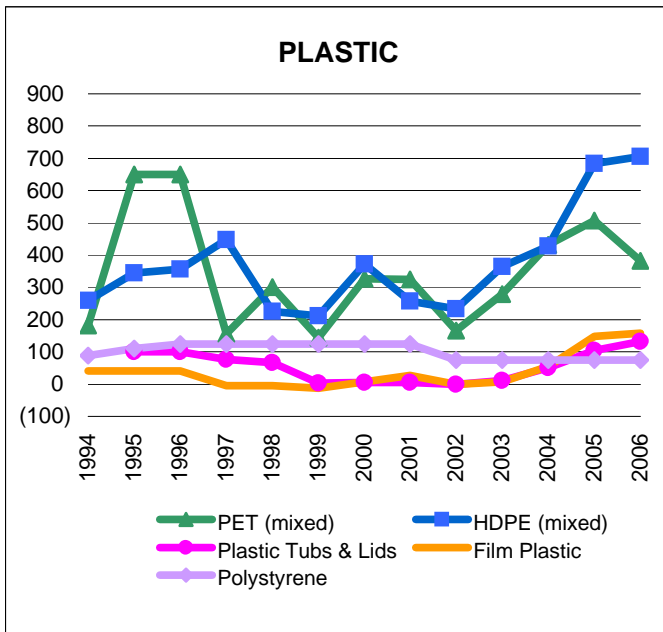
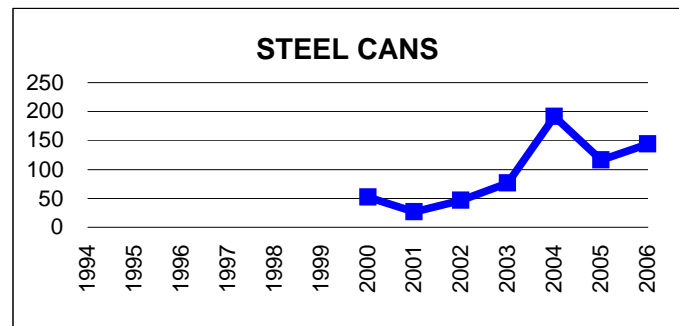
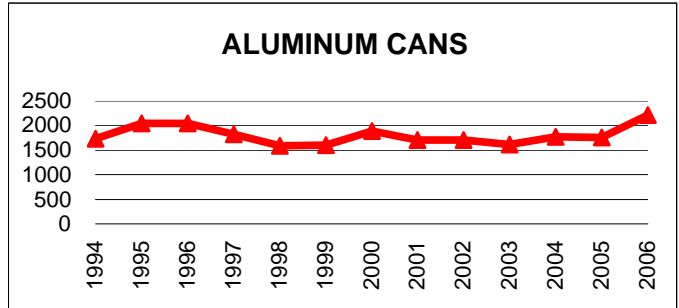
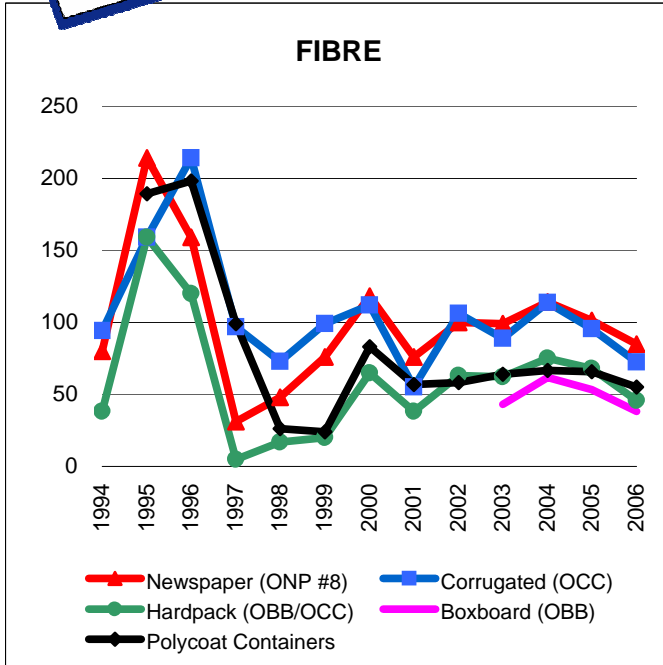


Graphs produced from Monthly Averages Table



The Price Sheet

Historical Yearly Averages (CDN\$/Metric Tonne)



Graphs produced from Yearly Averages Table



The Price Sheet

National Market Prices as of June 18, 2006

	QUARTERLY AVERAGES (CDN\$/Metric Tonne)											
	Western Canada				Central (Ontario)				Eastern Canada			
	Q3 Sept 05	Q4 Dec 05	Q1 Mar 06	Q2 Jun 06	Q3 Sept 05	Q4 Dec 05	Q1 Mar 06	Q2 Jun 06	Q3 Sept 05	Q4 Dec 05	Q1 Mar 06	Q2 Jun 06
Aluminum Cans	1603	1842	2224	1960	1619	1824	2123	2175	1562	1932	2201	2064
Steel Cans	100	100	n/a	n/a	132	119	135	180	89	86	78	110
Glass (clear/flint)	n/a	n/a	n/a	n/a	36	36	36	36	18	18	n/a	n/a
Glass (coloured/mixed)	n/a	n/a	n/a	n/a	(31)	(31)	(31)	(31)	n/a	n/a	n/a	n/a
PET (mixed)	530	467	469	421	466	419	404	324	529	450	441	342
HDPE (mixed)	588	n/a	n/a	n/a	646	832	811	487	614	853	n/a	n/a
HDPE (natural)	679	737	758	n/a	n/a	n/a	n/a	n/a	n/a	n/a	n/a	n/a
ONP (#8)	115	103	93	n/a	99	81	87	84	101	92	87	83
ONP (#6)	93	0	n/a	n/a	n/a	n/a	n/a	n/a	72	72	73	71
OCC	107	82	74	n/a	89	65	72	79	92	83	75	79
Residential (soft) Mix⁴	n/a	n/a	n/a	n/a	61	44	47	46	n/a	n/a	n/a	n/a
Polycoat Containers	n/a	n/a	n/a	n/a	63	60	54	50	n/a	n/a	n/a	n/a

Indicates FOB the municipality
 Indicates delivery to mill or industry

Notes:

- 1) Prices are for baled post-consumer residential materials (except glass, which is loose).
- 2) Prices are compiled from a range of municipal programs across Canada combined with information from industry representatives. Prices may not be the same as actual prices being paid in any given program.
- 3) Western Canada: BC, Alberta, Saskatchewan, Manitoba. Central Canada: Ontario. Eastern Canada: Quebec, PEI, Nova Scotia, New Brunswick, Newfoundland
- 4) Pricing for Central Canada (Ontario) is for OBB/OCC hard pack.

For more information please contact:
 John Dixie at 647-777-3366 (Toll-Free: 888-277-2762, Ext. 3366) email: jdixie@csr.org
 CSR, 26 Wellington Street East, Suite 601, Toronto, Ontario, M5E 1S2
 website: www.csr.org