



The Price Sheet

Spot Market Price Trends as of May 18, 2006

MONTHLY AVERAGES (CDN\$/Metric Tonne)

| | Jun 2005 | July 2005 | Aug 2005 | Sept 2005 | Oct 2005 | Nov 2005 | Dec 2005 | Jan 2006 | Feb 2006 | Mar 2006 | April 2006 | May 2006 |
|------------------------|-------------|--------------|-------------|--------------|-------------|-------------|-------------|-------------|-------------|-------------|---------------|-------------|
| Aluminum Cans | 1823 | 1662 | 1667 | 1619 | 1606 | 1746 | 1824 | 2025 | 2247 | 2123 | 2301 | 2425 |
| Steel Cans | 62 | 55 | 102 | 132 | 80 | 129 | 119 | 107 | 124 | 135 | 152 | 164 |
| Glass (clear) | 36 | 36 | 36 | 36 | 36 | 36 | 36 | 36 | 36 | 36 | 36 | 36 |
| Glass (mixed) | (31) | (31) | (31) | (31) | (31) | (31) | (31) | (31) | (31) | (31) | (31) | (31) |
| PET (mixed) | 601 | 558 | 501 | 466 | 490 | 466 | 419 | 413 | 408 | 404 | 397 | 340 |
| HDPE (mixed) | 686 | 565 | 598 | 646 | 727 | 828 | 832 | 862 | 863 | 811 | 682 | 524 |
| Plastic Tubs & Lids | 102 | 84 | 84 | 82 | 117 | 123 | 115 | 115 | 115 | 132 | 162 | 132 |
| Film Plastic | 166 | 136 | 131 | 141 | 152 | 162 | 166 | 167 | 163 | 162 | 159 | 154 |
| Polystyrene | 75 | 75 | 75 | 75 | 75 | 75 | 75 | 75 | 75 | 75 | 75 | 75 |
| Newspaper (ONP #8) | 108 | 100 | 99 | 99 | 94 | 92 | 81 | 83 | 81 | 87 | 88 | 85 |
| Corrugated (OCC) | 100 | 97 | 96 | 89 | 80 | 74 | 65 | 63 | 62 | 72 | 81 | 78 |
| Hardpack (OBB/OCC) | 67 | 65 | 64 | 61 | 59 | 56 | 44 | 44 | 42 | 47 | 50 | 46 |
| Boxboard (OBB) | 57 | 57 | 57 | 54 | 50 | 45 | 42 | 39 | 37 | 37 | 39 | 38 |
| Polycoat Containers | 66 | 63 | 64 | 63 | 60 | 60 | 60 | 60 | 56 | 54 | 66 | 46 |
| Composite Index | 129 | 119 | 119 | 119 | 114 | 117 | 109 | 112 | 114 | 114 | 117 | 112 |

YEARLY AVERAGES (CDN\$/Metric Tonne)

| | 1994 | 1995 | 1996 | 1997 | 1998 | 1999 | 2000 | 2001 | 2002 | 2003 | 2004 | 2005 | 2006 |
|------------------------|------|------|------|------|------|------|------------|-----------|------------|------------|------------|------------|------------|
| Aluminum Cans | 1731 | 2045 | 2045 | 1827 | 1595 | 1608 | 1893 | 1700 | 1709 | 1619 | 1772 | 1763 | 2224 |
| Steel Cans | | | | | | | 52 | 26 | 47 | 76 | 191 | 116 | 136 |
| Glass (clear) | 47 | 48 | 47 | 47 | 49 | 50 | 50 | 31 | 29 | 34 | 38 | 36 | 36 |
| Glass (mixed) | | | 0 | (4) | (25) | (20) | (15) | (15) | (15) | (19) | (12) | (31) | (31) |
| PET (mixed) | 181 | 650 | 650 | 155 | 300 | 144 | 326 | 324 | 166 | 278 | 432 | 507 | 393 |
| HDPE (mixed) | 259 | 345 | 356 | 447 | 226 | 211 | 373 | 257 | 233 | 364 | 428 | 683 | 749 |
| Plastic Tubs & Lids | | 100 | 100 | 76 | 66 | 3 | 5 | 5 | 0 | 12 | 51 | 104 | 131 |
| Film Plastic | 40 | 40 | 40 | (4) | (5) | (12) | 7 | 26 | 0 | 8 | 55 | 148 | 161 |
| Polystyrene | 88 | 110 | 125 | 125 | 125 | 125 | 125 | 125 | 75 | 75 | 75 | 75 | 75 |
| Newspaper (ONP #8) | 80 | 214 | 159 | 31 | 48 | 76 | 118 | 76 | 100 | 99 | 114 | 101 | 85 |
| Corrugated (OCC) | 94 | 159 | 214 | 97 | 73 | 99 | 112 | 55 | 106 | 89 | 114 | 95 | 71 |
| Hardpack (OBB/OCC) | 38 | 159 | 120 | 5 | 17 | 20 | 65 | 38 | 63 | 62 | 75 | 68 | 46 |
| Boxboard (OBB) | | | | | | | | | | 43 | 62 | 53 | 38 |
| Polycoat Containers | | 189 | 198 | 99 | 26 | 24 | 83 | 57 | 58 | 64 | 67 | 66 | 56 |
| Composite Index | | | | | | | 134 | 95 | 113 | 114 | 131 | 124 | 114 |

□ Indicates FOB the municipality

■ Indicates delivery to mill or industry

Notes:

- Prices are for baled post-consumer residential materials (except glass, which is loose).
- Prices are compiled from a range of municipal programs across Ontario combined with information from industry representatives. Prices may not be the same as actual prices being paid in any given program.
- The CSR Composite Index is calculated using the overall composition of residential Blue Box material recovered and marketed in Ontario. Composition figures are updated annually. Details available upon request.

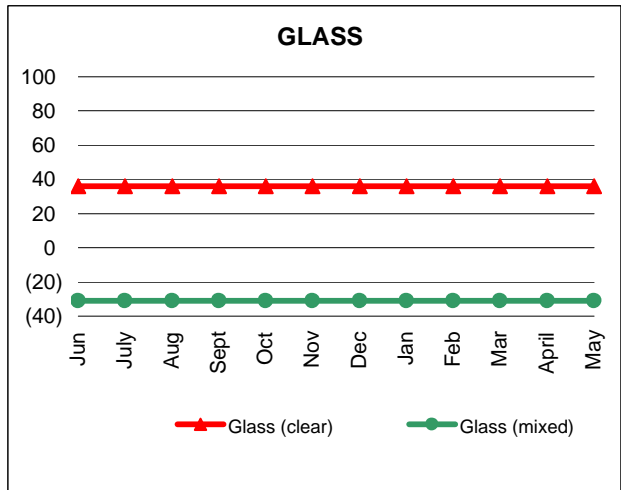
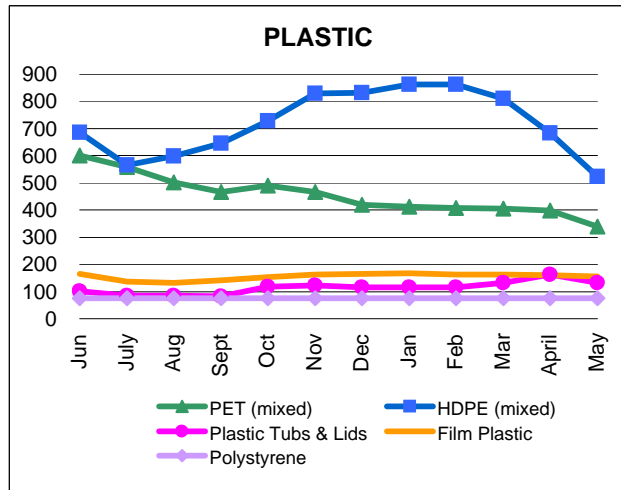
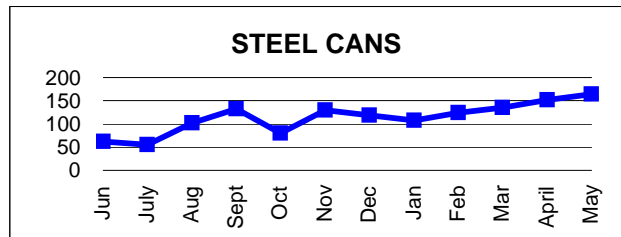
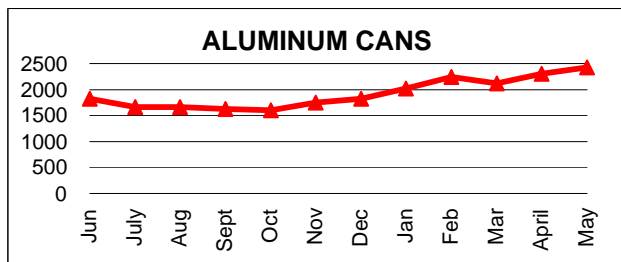
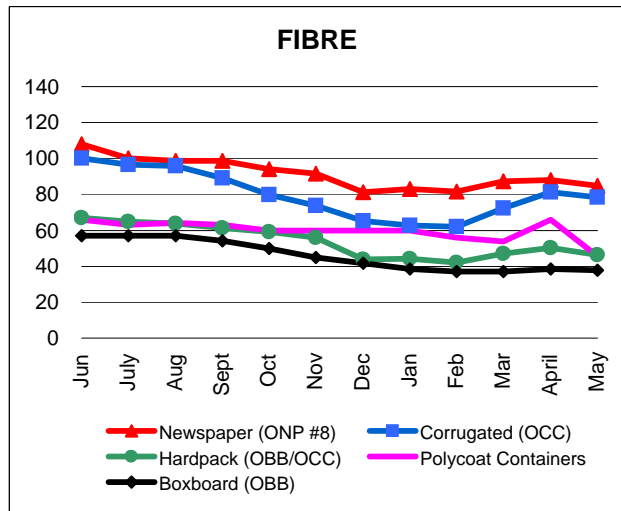
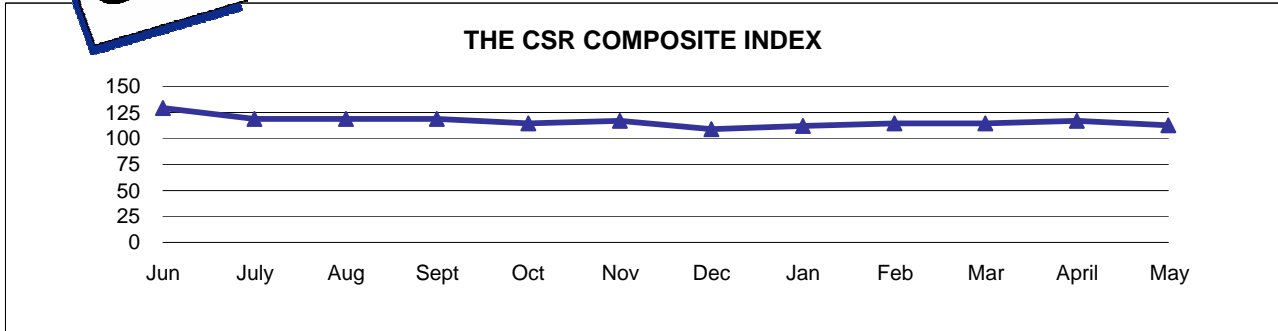
For more information please contact:

John Dixie at 647-777-3366 (Toll-Free: 888-277-2762, Ext. 3366) email: jdixie@csr.org
 CSR, 26 Wellington Street East, Suite 601, Toronto, Ontario, M5E 1S2
 website: www.csr.org



The Price Sheet

Monthly Averages from June 2005 to May 2006
(CDN\$/Metric Tonne)

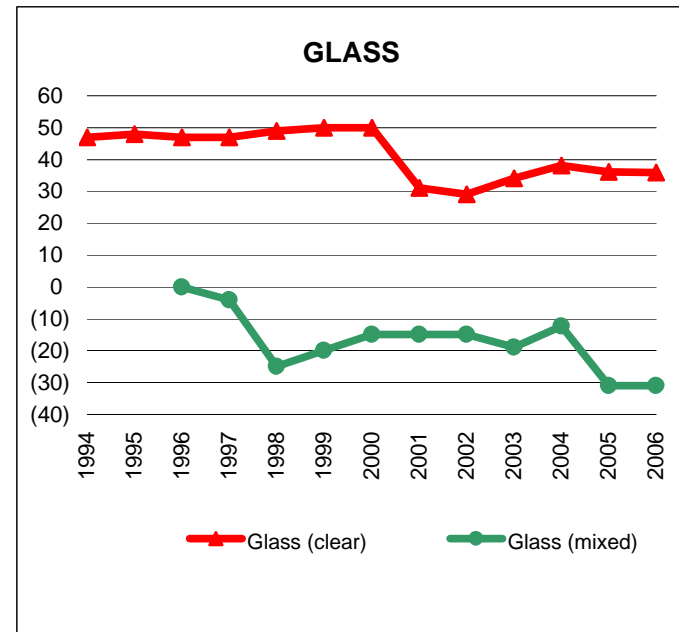
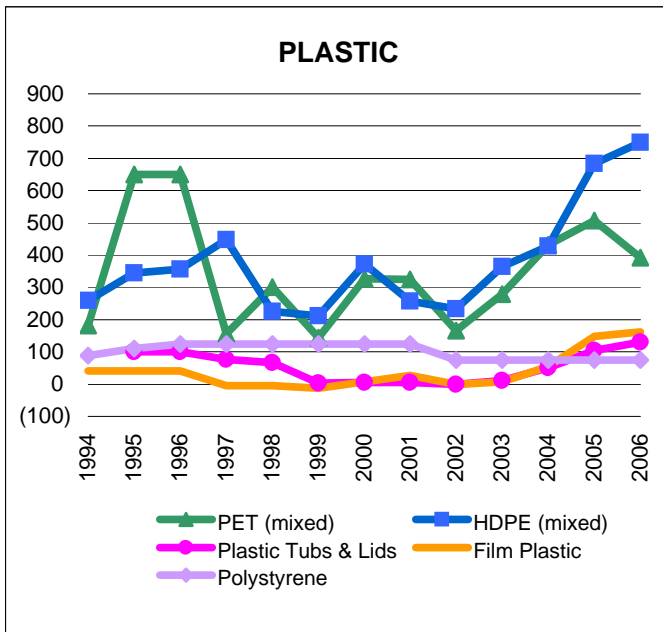
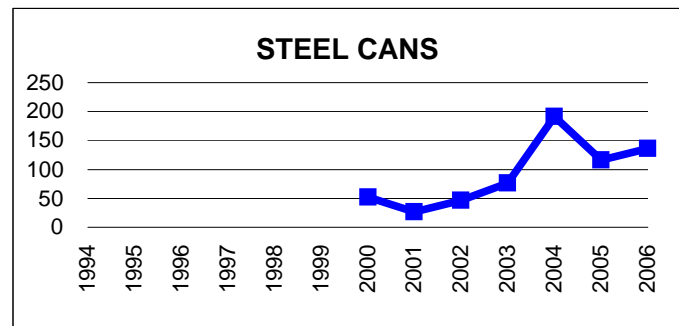
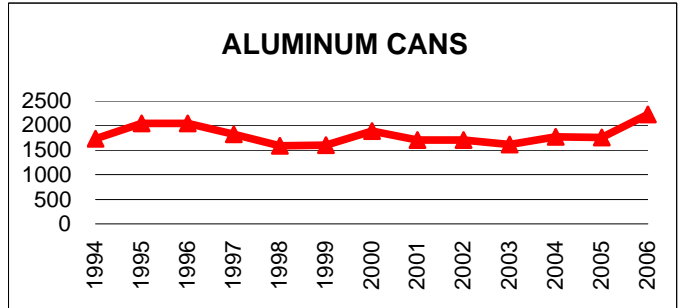
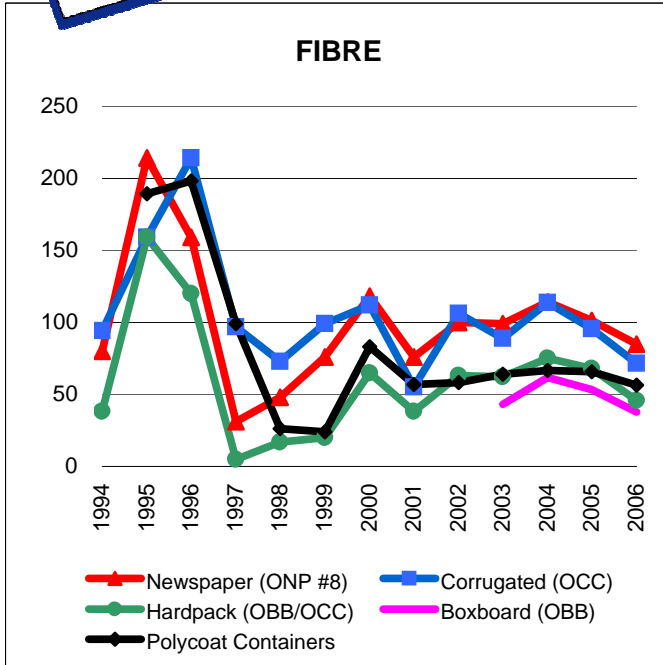


Graphs produced from Monthly Averages Table



The Price Sheet

Historical Yearly Averages (CDN\$/Metric Tonne)



Graphs produced from Yearly Averages Table