



The Price Sheet

Spot Market Price Trends as of March 17, 2006

MONTHLY AVERAGES (CDN\$/Metric Tonne)

	Apr 2005	May 2005	Jun 2005	July 2005	Aug 2005	Sept 2005	Oct 2005	Nov 2005	Dec 2005	Jan 2006	Feb 2006	Mar 2006
Aluminum Cans	1973	1845	1823	1662	1667	1619	1606	1746	1824	2025	2247	2123
Steel Cans	147	95	62	55	102	132	80	129	119	107	124	135
Glass (clear)	37	37	36	36	36	36	36	36	36	36	36	36
Glass (mixed)	(31)	(31)	(31)	(31)	(31)	(31)	(31)	(31)	(31)	(31)	(31)	(31)
PET	533	554	601	558	501	466	490	466	419	413	408	404
HDPE (mixed)	684	662	686	565	598	646	727	828	832	862	863	811
Plastic Tubs & Lids	115	119	102	84	84	82	117	123	115	115	115	132
Film Plastic	153	159	166	136	131	141	152	162	166	167	163	162
Polystyrene	75	75	75	75	75	75	75	75	75	75	75	75
Newspaper (ONP #8)	109	107	108	100	99	99	94	92	81	83	81	87
Corrugated (OCC)	111	98	100	97	96	89	80	74	65	63	62	72
Hardpack (OBB/OCC)	83	67	67	65	64	61	59	56	44	44	42	47
Boxboard (OBB)	56	56	57	57	57	54	50	45	42	39	37	37
Polycoat Containers	70	70	66	63	64	63	60	60	60	60	56	54
Composite Index	136	128	129	119	119	119	114	117	109	112	114	114

YEARLY AVERAGES (CDN\$/Metric Tonne)

	1994	1995	1996	1997	1998	1999	2000	2001	2002	2003	2004	2005	2006
Aluminum Cans	1731	2045	2045	1827	1595	1608	1893	1700	1709	1619	1772	1763	2132
Steel Cans							52	26	47	76	191	116	122
Glass (clear)	47	48	47	47	49	50	50	31	29	34	38	36	36
Glass (mixed)			0	(4)	(25)	(20)	(15)	(15)	(15)	(19)	(12)	(31)	(31)
PET	181	650	650	155	300	144	326	324	166	278	432	507	409
HDPE (mixed)	259	345	356	447	226	211	373	257	233	364	428	683	846
Plastic Tubs & Lids		100	100	76	66	3	5	5	0	12	51	104	121
Film Plastic	40	40	40	(4)	(5)	(12)	7	26	0	8	55	148	164
Polystyrene	88	110	125	125	125	125	125	125	75	75	75	75	75
Newspaper (ONP #8)	80	214	159	31	48	76	118	76	100	99	114	101	84
Corrugated (OCC)	94	159	214	97	73	99	112	55	106	89	114	95	66
Hardpack (OBB/OCC)	38	159	120	5	17	20	65	38	63	62	75	68	44
Boxboard (OBB)										43	62	53	38
Polycoat Containers		189	198	99	26	24	83	57	58	64	67	66	57
Composite Index							134	95	113	114	131	124	114

☐ Indicates FOB the municipality

▨ Indicates delivery to mill or industry

Notes:

- Prices are for baled post-consumer residential materials (except glass, which is loose).
- Prices are compiled from a range of municipal programs across Ontario combined with information from industry representatives. Prices may not be the same as actual prices being paid in any given program.
- The CSR Composite Index is calculated using the overall composition of residential Blue Box material recovered and marketed in Ontario. Composition figures are updated annually. Details available upon request.

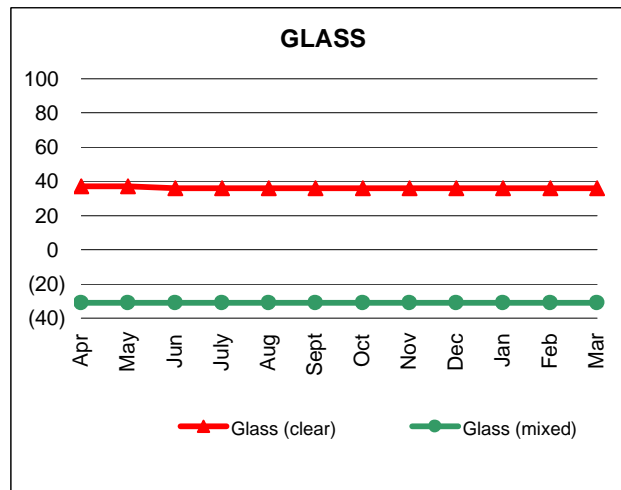
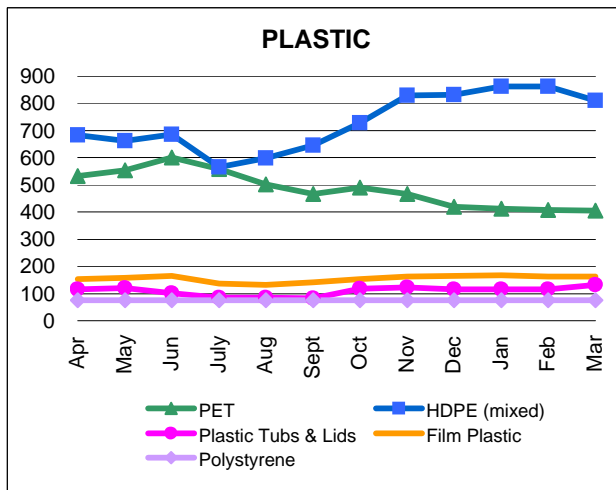
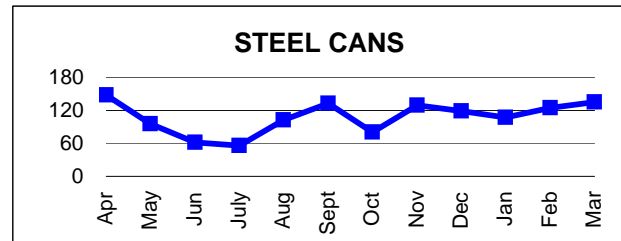
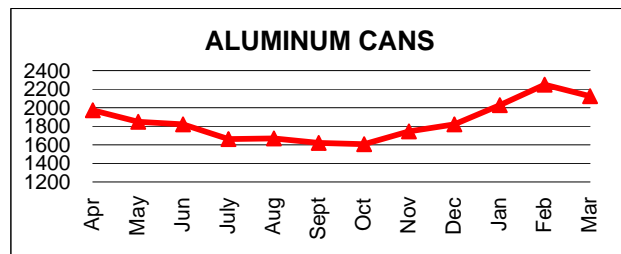
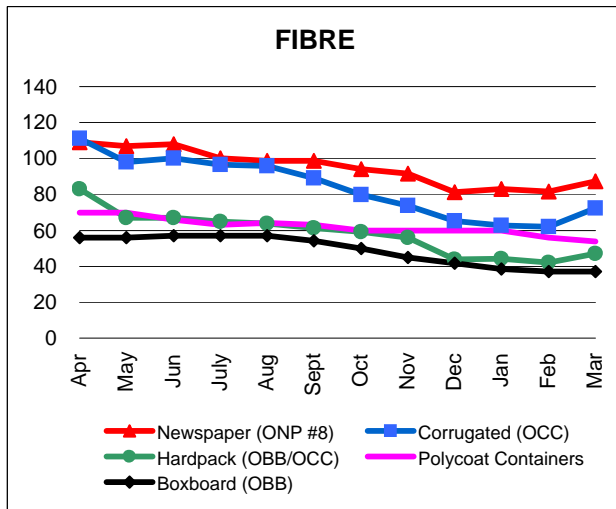
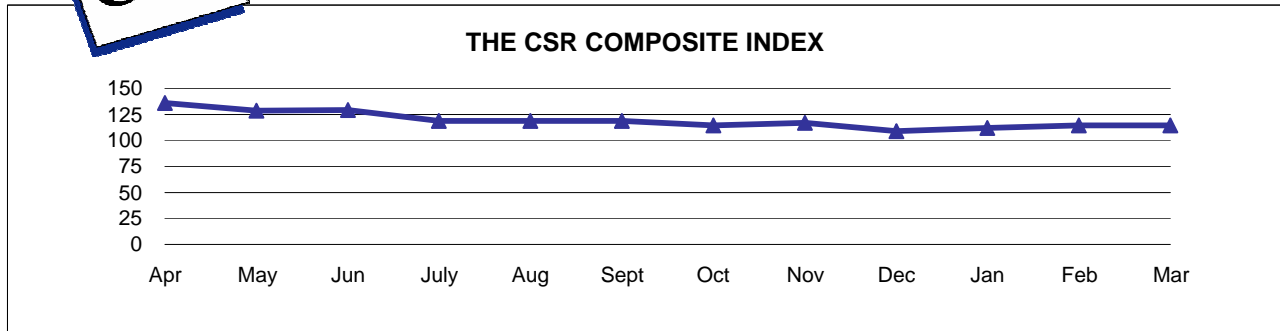
For more information please contact:

John Dixie at 647-777-3366 (Toll-Free: 888-277-2762, Ext. 3366) email: jdixie@csr.org
 CSR, 26 Wellington Street East, Suite 601, Toronto, Ontario, M5E 1S2
 website: www.csr.org



The Price Sheet

Monthly Averages from April 2005 to March 2006
(CDN\$/Metric Tonne)

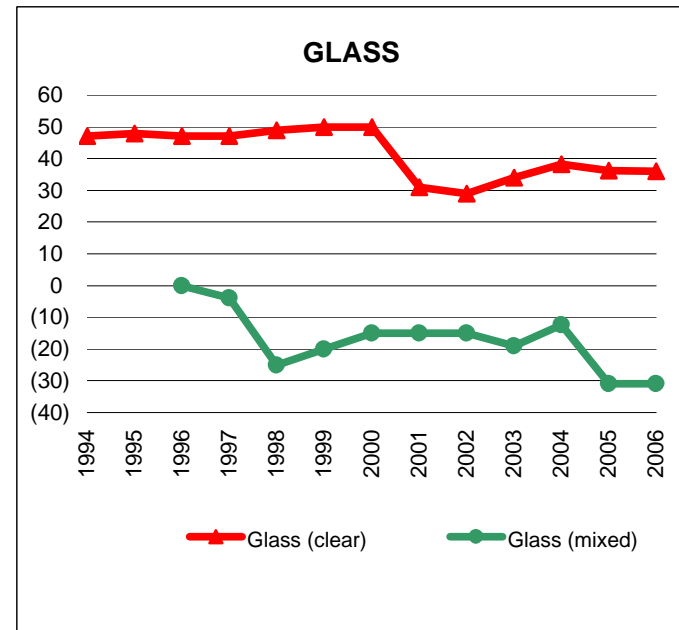
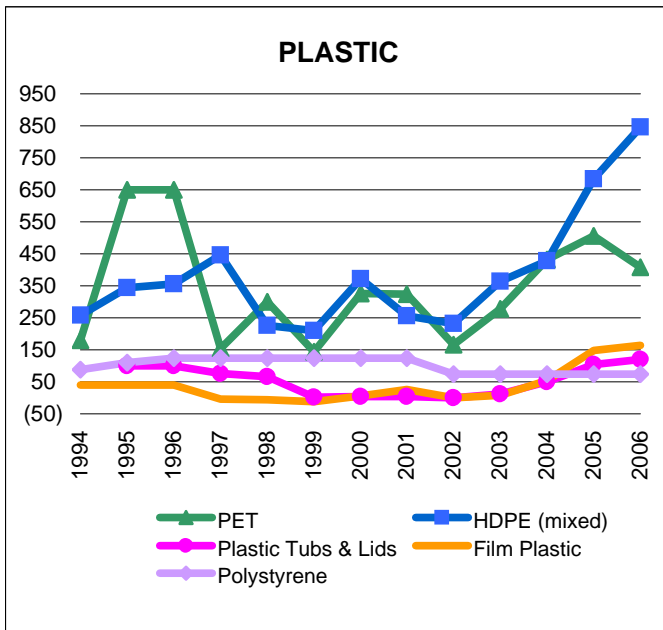
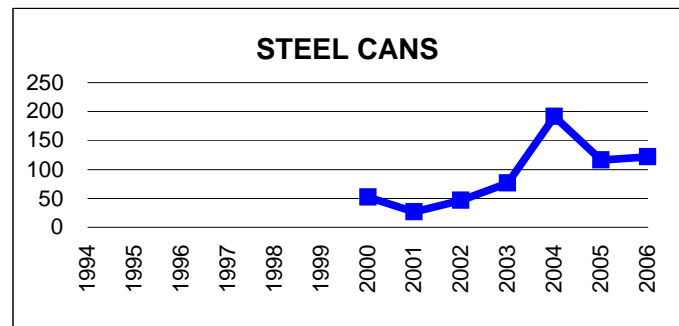
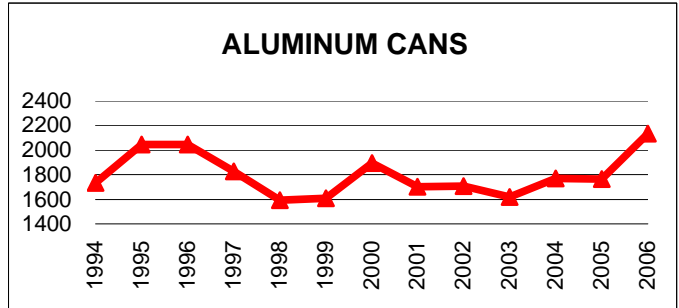
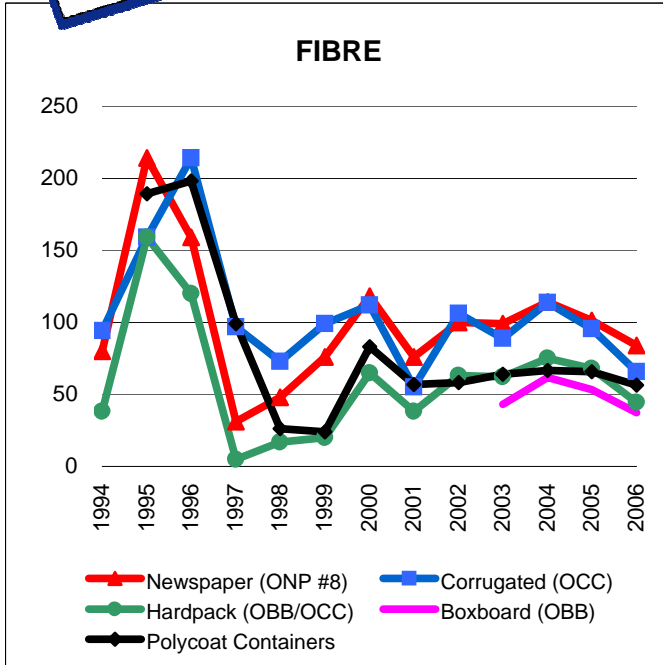


Graphs produced from Monthly Averages Table



The Price Sheet

Historical Yearly Averages (CDN\$/Metric Tonne)



Graphs produced from Yearly Averages Table



The Price Sheet

National Market Prices as of March 17, 2006

	QUARTERLY AVERAGES (CDN\$/Metric Tonne)											
	Western Canada				Central (Ontario)				Eastern Canada			
	Q2 Jun 05	Q3 Sept 05	Q4 Dec 05	Q1 Mar 06	Q2 Jun 05	Q3 Sept 05	Q4 Dec 05	Q1 Mar 06	Q2 Jun 05	Q3 Sept 05	Q4 Dec 05	Q1 Mar 06
Aluminum Cans	1737	1603	1842	2224	1823	1619	1824	2123	1722	1562	1932	2201
Steel Cans	64	100	100	n/a	62	132	119	135	60	89	86	78
Glass (clear/flint)	27	n/a	n/a	n/a	36	36	36	36	18	18	18	n/a
Glass (coloured/mixed)	n/a	n/a	n/a	n/a	(31)	(31)	(31)	(31)	n/a	n/a	n/a	n/a
PET (mixed)	580	530	467	469	601	466	419	404	589	529	450	441
HDPE (mixed)	513	588	n/a	n/a	686	646	832	811	679	614	853	n/a
HDPE (natural)	667	679	737	758	n/a	n/a	n/a	n/a	728	n/a	n/a	n/a
ONP (#8)	131	115	103	93	108	99	81	87	104	101	92	87
ONP (#6)	99	93	0	n/a	n/a	n/a	n/a	n/a	75	72	72	73
OCC	109	107	82	74	100	89	65	72	95	92	83	75
Residential (soft) Mix ⁴	n/a	n/a	n/a	n/a	67	61	44	47	n/a	n/a	n/a	n/a
Polycoat Containers	n/a	n/a	n/a	n/a	66	63	60	54	n/a	n/a	n/a	n/a

Indicates FOB the municipality
 Indicates delivery to mill or industry

Notes:

- 1) Prices are for baled post-consumer residential materials (except glass, which is loose).
- 2) Prices are compiled from a range of municipal programs across Canada combined with information from industry representatives. Prices may not be the same as actual prices being paid in any given program.
- 3) Western Canada: BC, Alberta, Saskatchewan, Manitoba. Central Canada: Ontario. Eastern Canada: Quebec, PEI, Nova Scotia, New Brunswick, Newfoundland
- 4) Pricing for Central Canada (Ontario) is for OBB/OCC hard pack.

For more information please contact:
 John Dixie at 647-777-3366 (Toll-Free: 888-277-2762, Ext. 3366) email: jdixie@csr.org
 CSR, 26 Wellington Street East, Suite 601, Toronto, Ontario, M5E 1S2
 website: www.csr.org