



The Price Sheet

Spot Market Price Trends as of Jan 16, 2006

MONTHLY AVERAGES (CDN\$/Metric Tonne)

	Feb 2005	Mar 2005	Apr 2005	May 2005	Jun 2005	July 2005	Aug 2005	Sept 2005	Oct 2005	Nov 2005	Dec 2005	Jan 2006
Aluminum Cans	1805	1873	1973	1845	1823	1662	1667	1619	1606	1746	1824	2025
Steel Cans	155	129	147	95	62	55	102	132	80	129	119	107
Glass (clear)	36	36	37	37	36	36	36	36	36	36	36	36
Glass (mixed)	(31)	(31)	(31)	(31)	(31)	(31)	(31)	(31)	(31)	(31)	(31)	(31)
PET	502	526	533	554	601	558	501	466	490	466	419	413
HDPE (mixed)	677	672	684	662	686	565	598	646	727	828	832	862
Plastic Tubs & Lids	108	109	115	119	102	84	84	82	117	123	115	115
Film Plastic	145	149	153	159	166	136	131	141	152	162	166	167
Polystyrene	75	75	75	75	75	75	75	75	75	75	75	75
Newspaper (ONP #8)	108	111	109	107	108	100	99	99	94	92	81	83
Corrugated (OCC)	119	118	111	98	100	97	96	89	80	74	65	63
Hardpack (OBB/OCC)	89	89	83	67	67	65	64	61	59	56	44	44
Boxboard (OBB)	56	56	56	56	57	57	57	54	50	45	42	39
Polycoat Containers	70	70	70	70	66	63	64	63	60	60	60	60
Composite Index	134	135	136	128	129	119	119	119	114	117	109	112

YEARLY AVERAGES (CDN\$/Metric Tonne)

	1994	1995	1996	1997	1998	1999	2000	2001	2002	2003	2004	2005	2006
Aluminum Cans	1731	2045	2045	1827	1595	1608	1893	1700	1709	1619	1772	1763	2025
Steel Cans							52	26	47	76	191	116	107
Glass (clear)	47	48	47	47	49	50	50	31	29	34	38	36	36
Glass (mixed)			0	(4)	(25)	(20)	(15)	(15)	(15)	(19)	(12)	(31)	(31)
PET	181	650	650	155	300	144	326	324	166	278	432	507	413
HDPE (mixed)	259	345	356	447	226	211	373	257	233	364	428	683	862
Plastic Tubs & Lids		100	100	76	66	3	5	5	0	12	51	104	115
Film Plastic	40	40	40	(4)	(5)	(12)	7	26	0	8	55	148	167
Polystyrene	88	110	125	125	125	125	125	125	75	75	75	75	75
Newspaper (ONP #8)	80	214	159	31	48	76	118	76	100	99	114	101	83
Corrugated (OCC)	94	159	214	97	73	99	112	55	106	89	114	95	63
Hardpack (OBB/OCC)	38	159	120	5	17	20	65	38	63	62	75	68	44
Boxboard (OBB)										43	62	53	39
Polycoat Containers		189	198	99	26	24	83	57	58	64	67	66	60
Composite Index							134	95	113	114	131	124	112

□ Indicates FOB the municipality

■ Indicates delivery to mill or industry

Notes:

- Prices are for baled post-consumer residential materials (except glass, which is loose).
- Prices are compiled from a range of municipal programs across Ontario combined with information from industry representatives. Prices may not be the same as actual prices being paid in any given program.
- The CSR Composite Index is calculated using the overall composition of residential Blue Box material recovered and marketed in Ontario. Details available upon request.

For more information contact:

John Dixie at 647-777-3366 (Toll-Free: 888-277-2762, Ext. 3366) email: jdixie@csr.org

CSR, 26 Wellington Street East, Suite 601, Toronto, Ontario, M5E 1S2

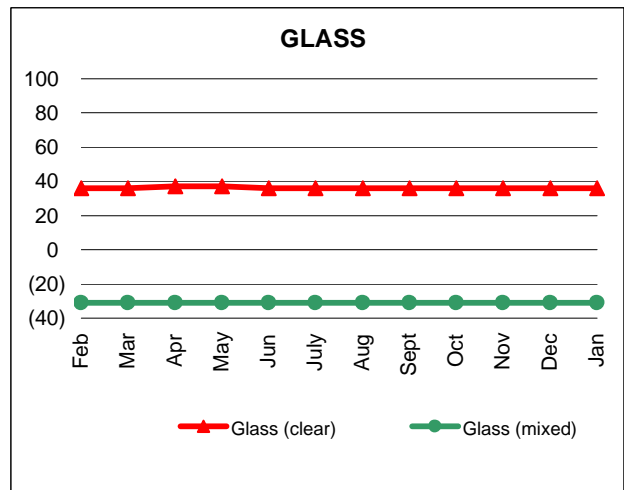
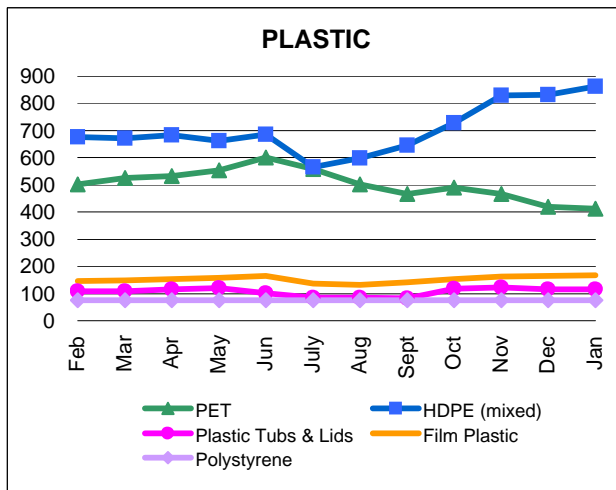
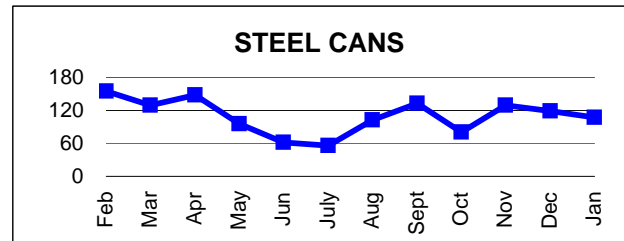
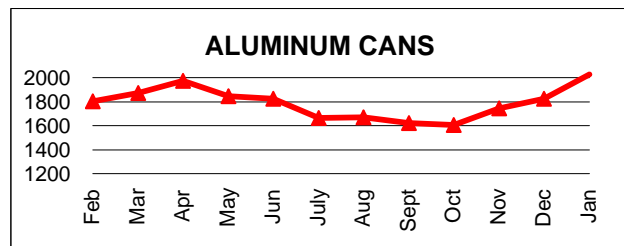
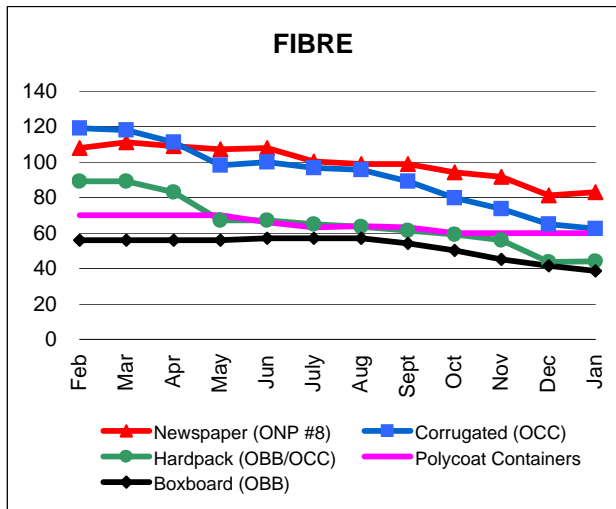
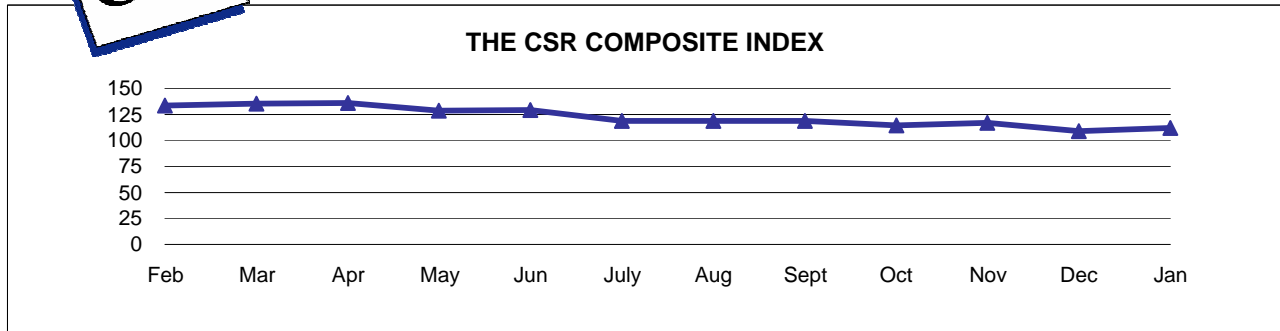
website: www.csr.org

CSR © 2006



The Price Sheet

Monthly Averages from Feb 2005 to Jan 2006
(CDN\$/Metric Tonne)

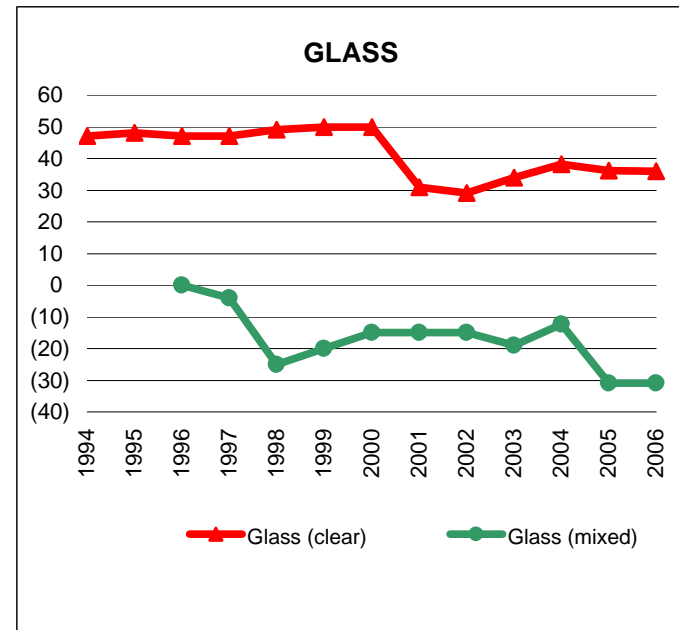
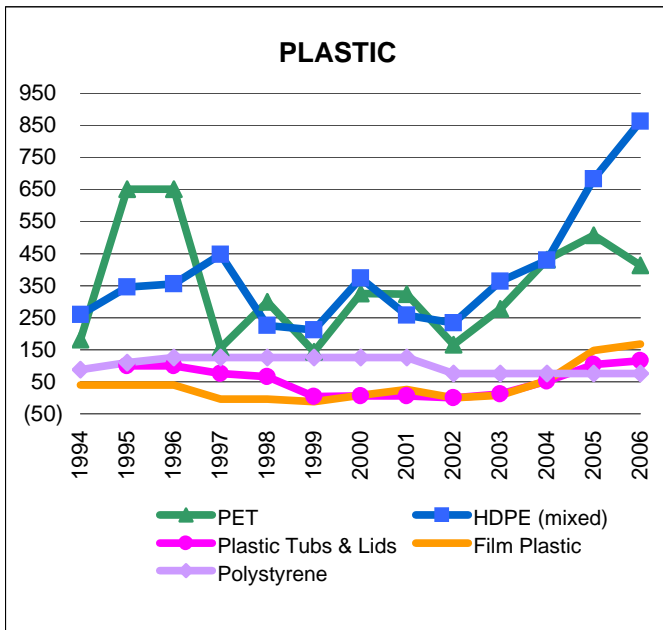
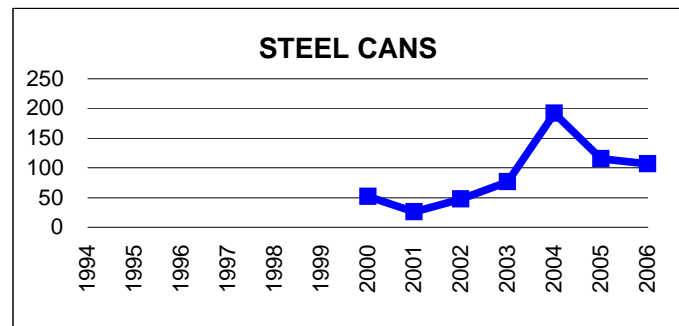
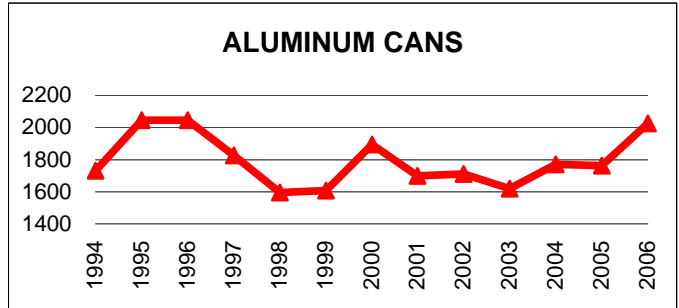
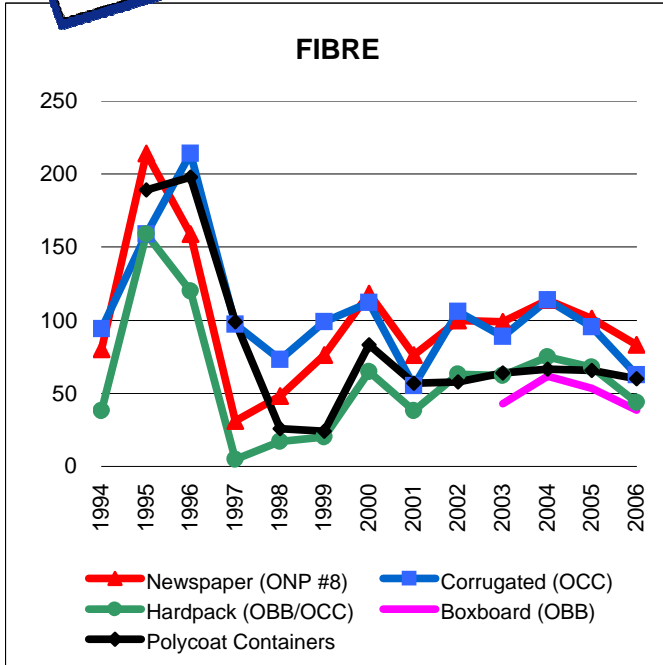


Graphs produced from Monthly Averages Table



The Price Sheet

Historical Yearly Averages (CDN\$/Metric Tonne)



Graphs produced from Yearly Averages Table