



The Price Sheet

Spot Market Price Trends as of Dec 16, 2005

MONTHLY AVERAGES (CDN\$/Metric Tonne)

	Jan 2005	Feb 2005	Mar 2005	Apr 2005	May 2005	Jun 2005	July 2005	Aug 2005	Sept 2005	Oct 2005	Nov 2005	Dec 2005
Aluminum Cans	1709	1805	1873	1973	1845	1823	1662	1667	1619	1606	1746	1824
Steel Cans	184	155	129	147	95	62	55	102	132	80	129	119
Glass (clear)	36	36	36	37	37	36	36	36	36	36	36	36
Glass (mixed)	(31)	(31)	(31)	(31)	(31)	(31)	(31)	(31)	(31)	(31)	(31)	(31)
PET	466	502	526	533	554	601	558	501	466	490	466	419
HDPE (mixed)	620	677	672	684	662	686	565	598	646	727	828	832
Plastic Tubs & Lids	91	108	109	115	119	102	84	84	82	117	123	115
Film Plastic	120	145	149	153	159	166	136	131	141	152	162	166
Polystyrene	75	75	75	75	75	75	75	75	75	75	75	75
Newspaper (ONP #8)	107	108	111	109	107	108	100	99	99	94	92	81
Corrugated (OCC)	99	119	118	111	98	100	97	96	89	80	74	65
Hardpack (OBB/OCC)	70	89	89	83	67	67	65	64	61	59	56	44
Boxboard (OBB)	56	56	56	56	56	57	57	57	54	50	45	42
Polycoat Containers	70	70	70	70	70	66	63	64	63	60	60	60
Composite Index	126	134	135	136	128	129	119	119	119	114	117	109

YEARLY AVERAGES (CDN\$/Metric Tonne)

	1994	1995	1996	1997	1998	1999	2000	2001	2002	2003	2004	2005
Aluminum Cans	1731	2045	2045	1827	1595	1608	1893	1700	1709	1619	1772	1763
Steel Cans							52	26	47	76	191	116
Glass (clear)	47	48	47	47	49	50	50	31	29	34	38	36
Glass (mixed)			0	(4)	(25)	(20)	(15)	(15)	(15)	(19)	(12)	(31)
PET	181	650	650	155	300	144	326	324	166	278	432	507
HDPE (mixed)	259	345	356	447	226	211	373	257	233	364	428	683
Plastic Tubs & Lids		100	100	76	66	3	5	5	0	12	51	104
Film Plastic	40	40	40	(4)	(5)	(12)	7	26	0	8	55	148
Polystyrene	88	110	125	125	125	125	125	125	75	75	75	75
Newspaper (ONP #8)	80	214	159	31	48	76	118	76	100	99	114	101
Corrugated (OCC)	94	159	214	97	73	99	112	55	106	89	114	95
Hardpack (OBB/OCC)	38	159	120	5	17	20	65	38	63	62	75	68
Boxboard (OBB)										43	62	53
Polycoat Containers		189	198	99	26	24	83	57	58	64	67	66
Composite Index							134	95	113	114	131	124

□ Indicates FOB the municipality

■ Indicates delivery to mill or industry

Notes:

- 1) Prices are for baled post-consumer residential materials (except glass, which is loose).
- 2) Prices are compiled from a range of municipal programs across Ontario combined with information from industry representatives. Prices may not be the same as actual prices being paid in any given program.
- 3) The CSR Composite Index is calculated using the overall composition of residential Blue Box material recovered and marketed in Ontario. Details available upon request.

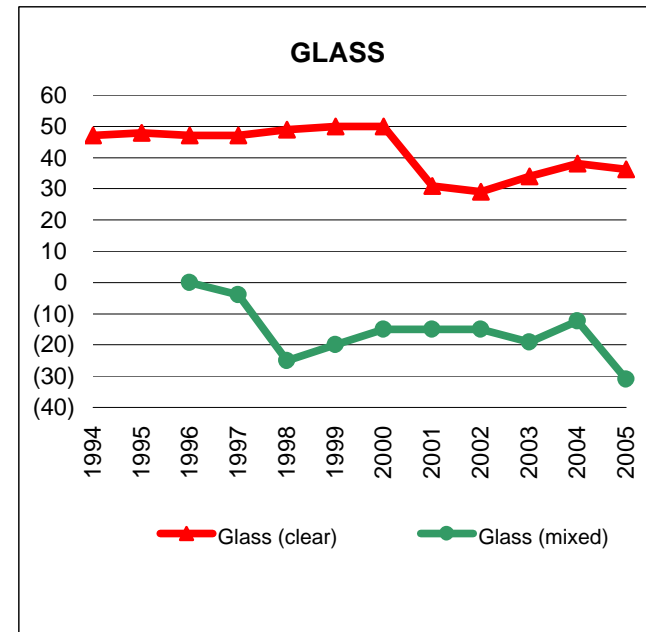
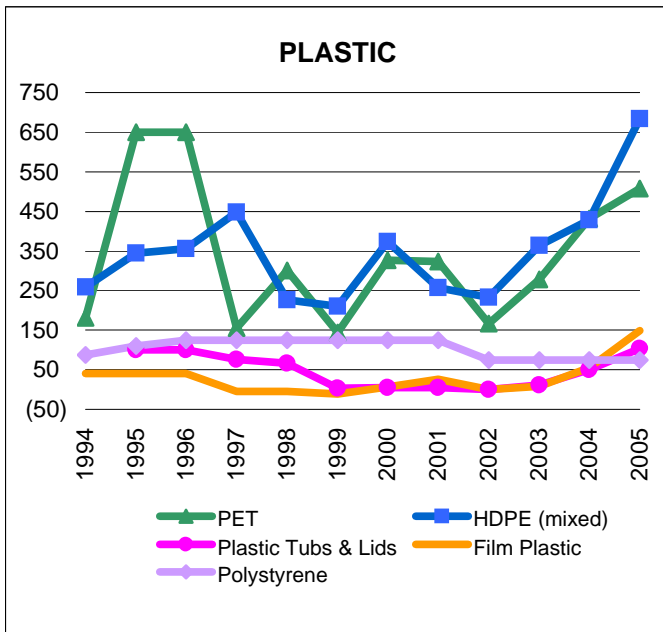
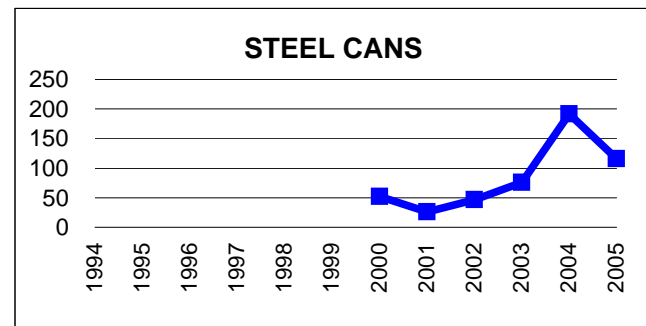
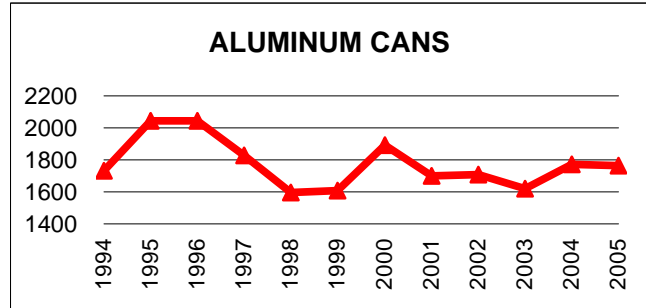
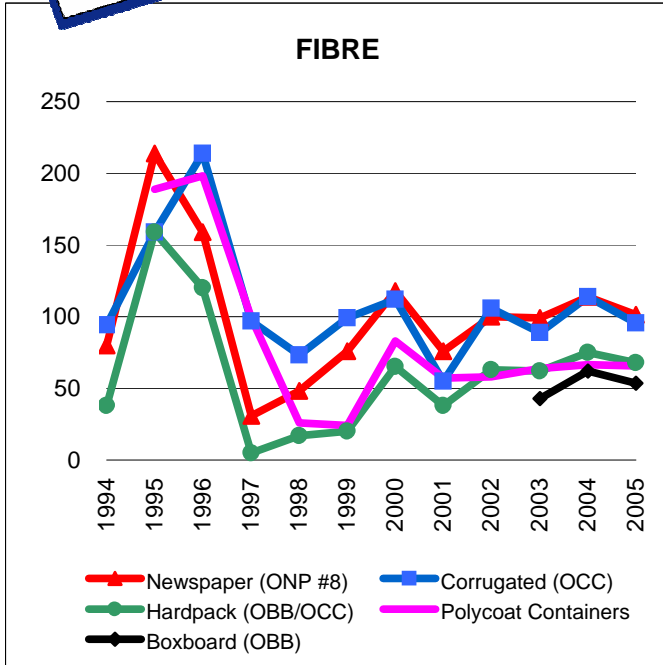
For more information contact:

John Dixie at 647-777-3366 (Toll-Free: 888-277-2762, Ext. 3366) email: jdixie@csr.org
 CSR, 26 Wellington Street East, Suite 601, Toronto, Ontario, M5E 1S2
 website: www.csr.org



The Price Sheet

Historical Yearly Averages (CDN\$/Metric Tonne)

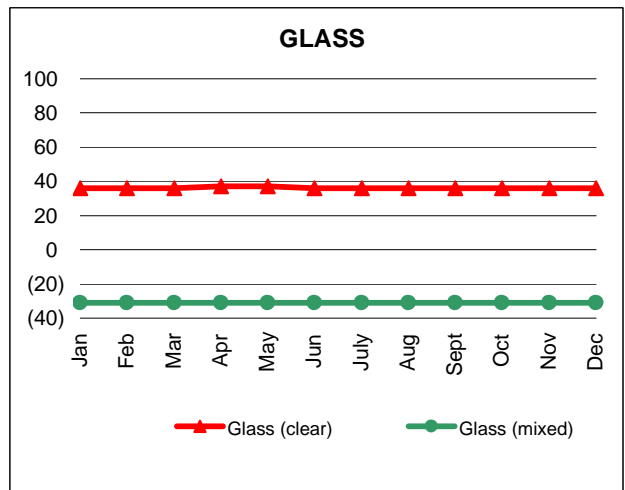
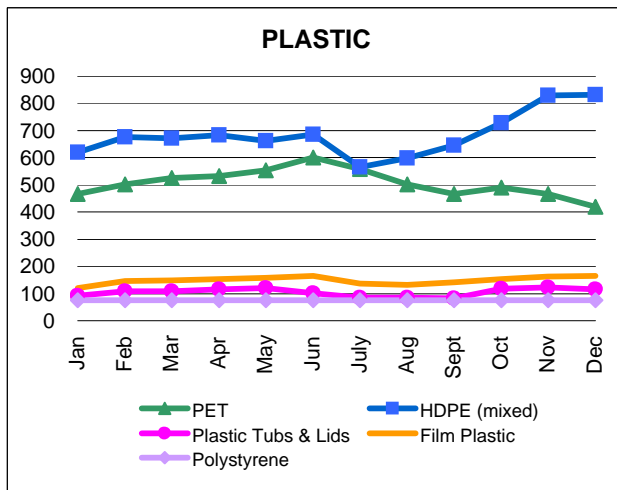
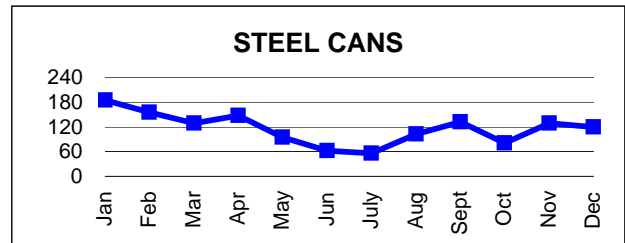
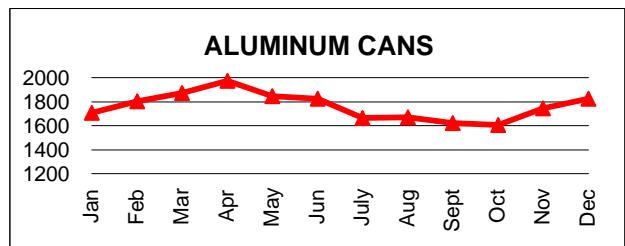
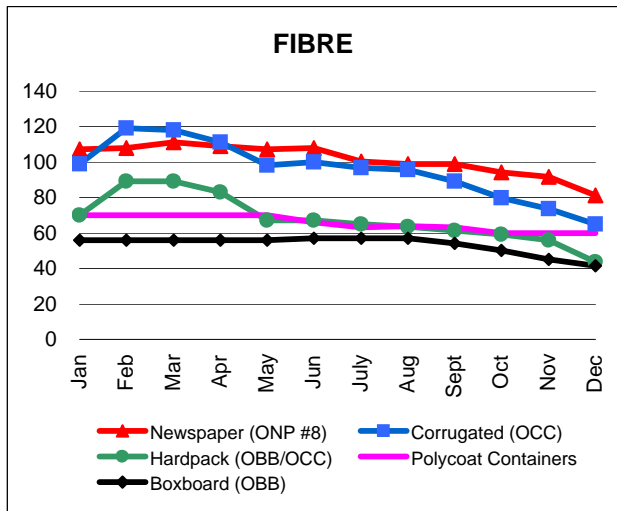
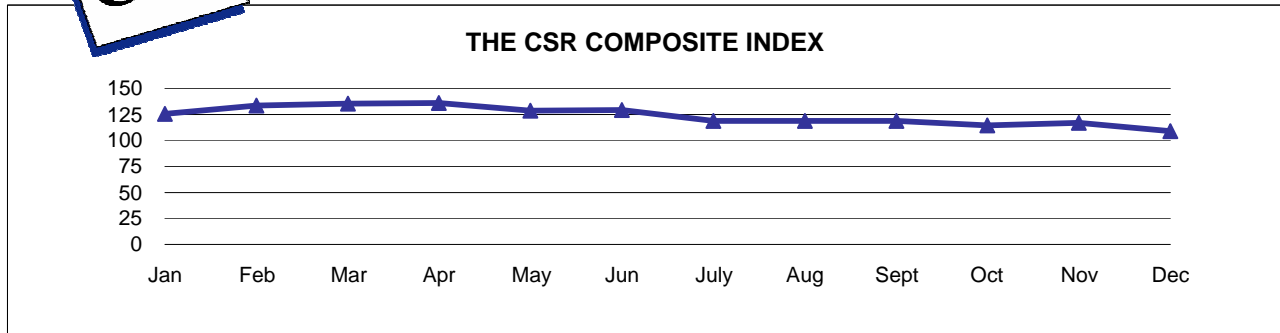


Graphs produced from Yearly Averages Table



The Price Sheet

Monthly Averages from Jan 2005 to Dec 2005
(CDN\$/Metric Tonne)



Graphs produced from Monthly Averages Table



The Price Sheet

National Market Prices as of December 16, 2005

	QUARTERLY AVERAGES (CDN\$/Metric Tonne)											
	Western Canada				Central (Ontario)				Eastern Canada			
	Q1	Q2	Q3	Q4	Q1	Q2	Q3	Q4	Q1	Q1	Q3	Q4
	Mar 05	Jun 05	Sept 05	Dec 05	Mar 05	Jun 05	Sept 05	Dec 05	Mar 05	Jun 05	Sept 05	Dec 05
Aluminum Cans	1835	1737	1603	1842	1796	1823	1619	1824	1936	1722	1562	1932
Steel Cans	64	64	100	100	156	62	132	119	93	60	89	86
Glass (clear/flint)	27	27	n/a	n/a	36	36	36	36	15	18	18	18
Glass (coloured/mixed)	n/a	n/a	n/a	n/a	(31)	(31)	(31)	(31)	n/a	n/a	n/a	n/a
PET (mixed)	526	580	530	467	498	601	466	419	498	589	529	450
HDPE (mixed)	438	513	588	n/a	656	686	646	832	704	679	614	853
HDPE (natural)	591	667	679	737	n/a	n/a	n/a	n/a	704	728	n/a	n/a
ONP (#8)	127	131	115	103	109	108	99	81	106	104	101	92
ONP (#6)	96	99	93	0	n/a	n/a	n/a	n/a	75	75	72	72
OCC	116	109	107	82	112	100	89	65	97	95	92	83
Residential (soft) Mix ⁴	82	n/a	n/a	n/a	83	67	61	44	n/a	n/a	n/a	n/a
Polycoat Containers	n/a	n/a	n/a	n/a	70	66	63	60	46	n/a	n/a	n/a

Indicates FOB the municipality

Indicates delivery to mill or industry

Notes:

- 1) Prices are for baled post-consumer residential materials (except glass, which is loose).
- 2) Prices are compiled from a range of municipal programs across Canada combined with information from industry representatives. Prices may not be the same as actual prices being paid in any given program.
- 3) Western Canada: BC, Alberta, Saskatchewan, Manitoba. Central Canada: Ontario. Eastern Canada: Quebec, PEI, Nova Scotia, New Brunswick, Newfoundland
- 4) Pricing for Central Canada (Ontario) is for OBB/OCC hard pack.

For more information:

John Dixie at 647-777-3366 (Toll-Free: 888-277-2762, Ext. 3366) email: jdixie@csr.org

CSR, 26 Wellington Street East, Suite 601, Toronto, Ontario, M5E 1S2

website: www.csr.org