



The Price Sheet

Spot Market Price Trends as of Nov 17, 2005

MONTHLY AVERAGES (CDN\$/Metric Tonne)

	Dec 2004	Jan 2005	Feb 2005	Mar 2005	Apr 2005	May 2005	Jun 2005	July 2005	Aug 2005	Sept 2005	Oct 2005	Nov 2005
Aluminum Cans	1719	1709	1805	1873	1973	1845	1823	1662	1667	1619	1606	1746
Steel Cans	217	184	155	129	147	95	62	55	102	132	80	129
Glass (clear)	36	36	36	36	37	37	36	36	36	36	36	36
Glass (mixed)	(16)	(31)	(31)	(31)	(31)	(31)	(31)	(31)	(31)	(31)	(31)	(31)
PET	450	466	502	526	533	554	601	558	501	466	490	466
HDPE (mixed)	578	620	677	672	684	662	686	565	598	646	727	828
Plastic Tubs & Lids	68	91	108	109	115	119	102	84	84	82	117	123
Film Plastic	120	120	145	149	153	159	166	136	131	141	152	162
Polystyrene	75	75	75	75	75	75	75	75	75	75	75	75
Newspaper (ONP #8)	104	107	108	111	109	107	108	100	99	99	94	92
Corrugated (OCC)	97	99	119	118	111	98	100	97	96	89	80	74
Hardpack (OBB/OCC)	70	70	89	89	83	67	67	65	64	61	59	56
Boxboard (OBB)	56	56	56	56	56	56	57	57	57	54	50	45
Polycoat Containers	68	70	70	70	70	70	66	63	64	63	60	60
Composite Index	126	126	134	135	136	128	129	119	119	119	114	117

YEARLY AVERAGES (CDN\$/Metric Tonne)

	1994	1995	1996	1997	1998	1999	2000	2001	2002	2003	2004	2005
Aluminum Cans	1731	2045	2045	1827	1595	1608	1893	1700	1709	1619	1772	1757
Steel Cans							52	26	47	76	191	115
Glass (clear)	47	48	47	47	49	50	50	31	29	34	38	36
Glass (mixed)			0	(4)	(25)	(20)	(15)	(15)	(15)	(19)	(12)	(31)
PET	181	650	650	155	300	144	326	324	166	278	432	515
HDPE (mixed)	259	345	356	447	226	211	373	257	233	364	428	670
Plastic Tubs & Lids		100	100	76	66	3	5	5	0	12	51	103
Film Plastic	40	40	40	(4)	(5)	(12)	7	26	0	8	55	147
Polystyrene	88	110	125	125	125	125	125	125	75	75	75	75
Newspaper (ONP #8)	80	214	159	31	48	76	118	76	100	99	114	103
Corrugated (OCC)	94	159	214	97	73	99	112	55	106	89	114	98
Hardpack (OBB/OCC)	38	159	120	5	17	20	65	38	63	62	75	70
Boxboard (OBB)										43	62	55
Polycoat Containers		189	198	99	26	24	83	57	58	64	67	66
Composite Index							134	95	113	114	131	125

□ Indicates FOB the municipality

■ Indicates delivery to mill or industry

Notes:

- 1) Prices are for baled post-consumer residential materials (except glass, which is loose).
- 2) Prices are compiled from a range of municipal programs across Ontario combined with information from industry representatives. Prices may not be the same as actual prices being paid in any given program.
- 3) The CSR Composite Index is calculated using the overall composition of residential Blue Box material recovered and marketed in Ontario. Details available upon request.

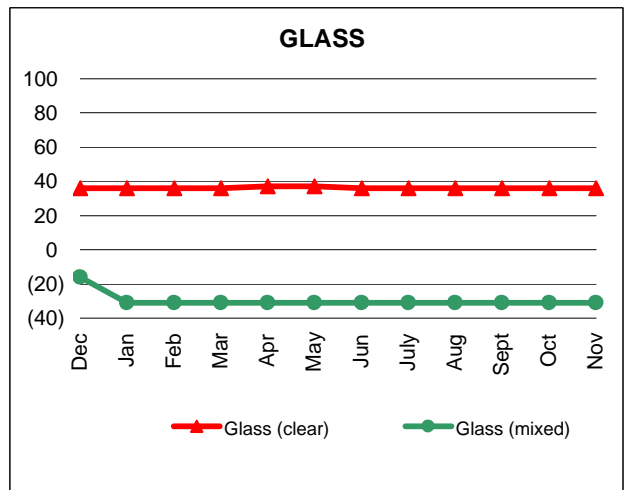
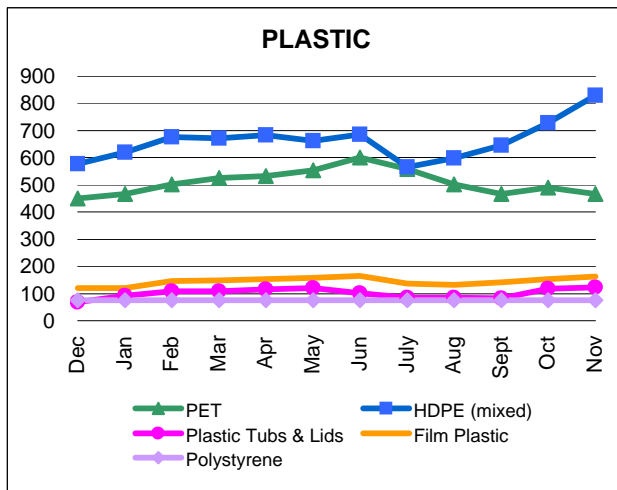
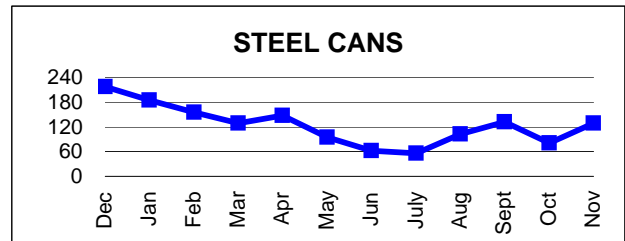
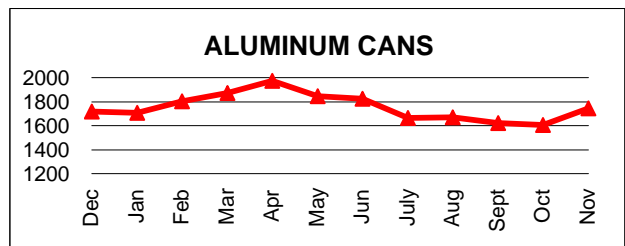
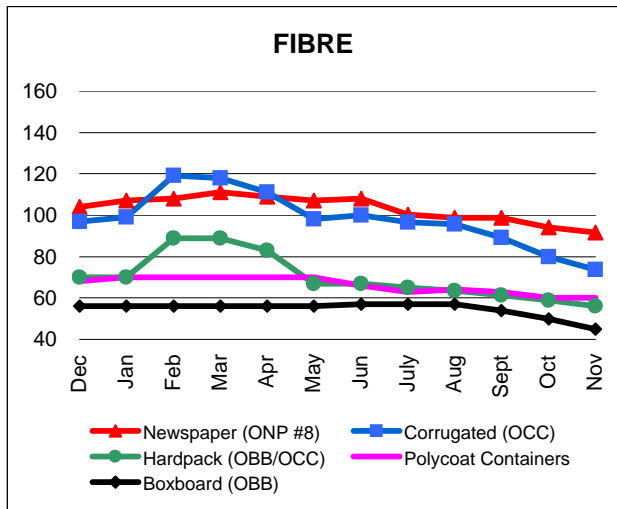
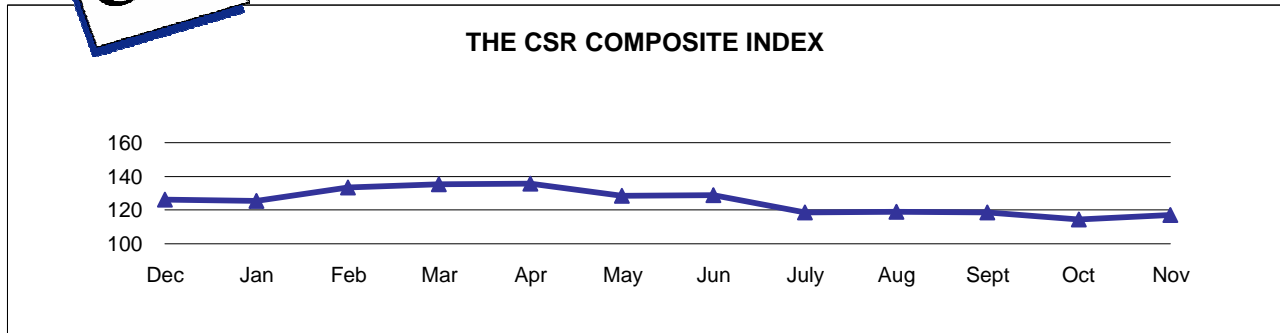
For more information contact:

John Dixie at 647-777-3366 (Toll-Free: 888-277-2762, Ext. 3366) email: jdixie@csr.org
 CSR, 26 Wellington Street East, Suite 601, Toronto, Ontario, M5E 1S2
 website: www.csr.org



The Price Sheet

Monthly Averages from Dec 2004 to November 2005
(CDN\$/Metric Tonne)

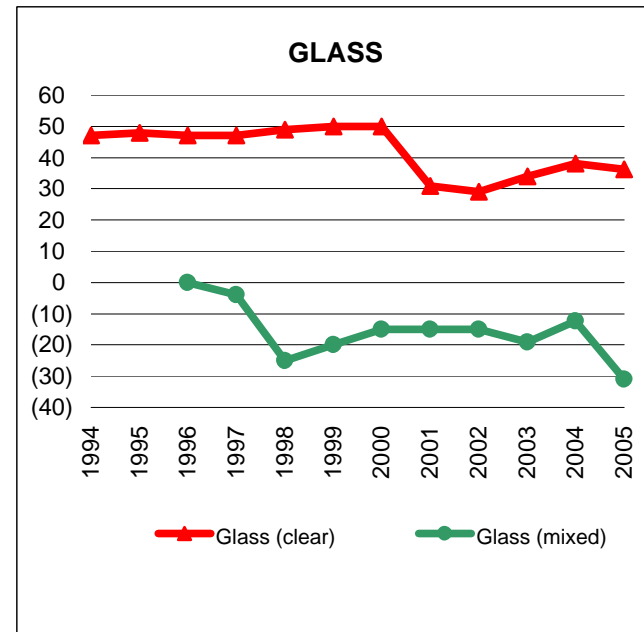
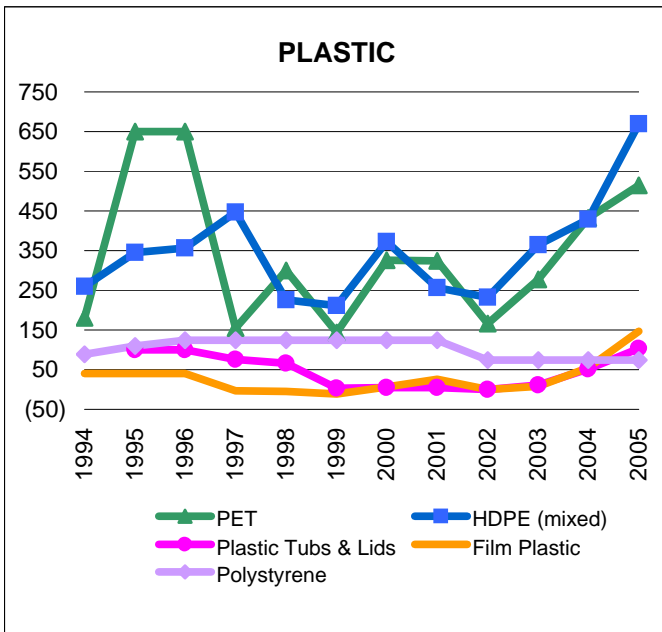
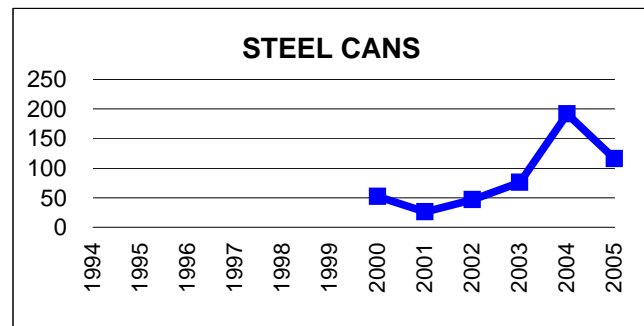
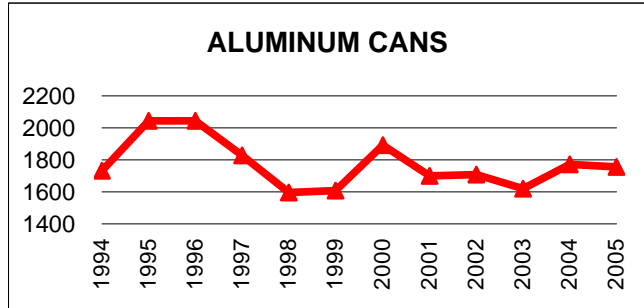
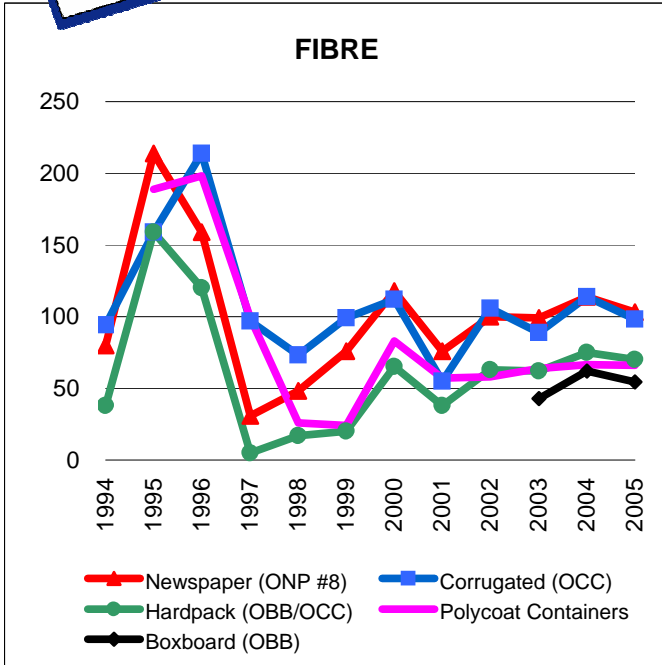


Graphs produced from Monthly Averages Table



The Price Sheet

Historical Yearly Averages (CDN\$/Metric Tonne)



Graphs produced from Yearly Averages Table