



# The Price Sheet

## Spot Market Price Trends as of Sept 16, 2005

### MONTHLY AVERAGES (CDN\$/Metric Tonne)

	Oct 2004	Nov 2004	Dec 2004	Jan 2005	Feb 2005	Mar 2005	Apr 2005	May 2005	Jun 2005	July 2005	Aug 2005	Sept 2005
Aluminum Cans	1770	1667	1719	1709	1805	1873	1973	1845	1823	1662	1667	1619
Steel Cans	269	267	217	184	155	129	147	95	62	55	102	132
Glass (clear)	37	36	36	36	36	36	37	37	36	36	36	36
Glass (mixed)	(16)	(16)	(16)	(31)	(31)	(31)	(31)	(31)	(31)	(31)	(31)	(31)
PET	422	423	450	466	502	526	533	554	601	558	501	466
HDPE (mixed)	464	487	578	620	677	672	684	662	686	565	598	646
Plastic Tubs & Lids	67	67	68	91	108	109	115	119	102	84	84	82
Film Plastic	85	111	120	120	145	149	153	159	166	136	131	141
Polystyrene	75	75	75	75	75	75	75	75	75	75	75	75
Newspaper (ONP #8)	109	107	104	107	108	111	109	107	108	100	99	99
Corrugated (OCC)	103	100	97	99	119	118	111	98	100	97	96	89
Hardpack (OBB/OCC)	71	71	70	70	89	89	83	67	67	65	64	61
Boxboard (OBB)	62	56	56	56	56	56	56	56	57	57	57	54
Polycoat Containers	68	68	68	70	70	70	70	70	66	63	64	63
<b>Composite Index</b>	<b>131</b>	<b>128</b>	<b>126</b>	<b>126</b>	<b>134</b>	<b>135</b>	<b>136</b>	<b>128</b>	<b>129</b>	<b>119</b>	<b>119</b>	<b>119</b>

### YEARLY AVERAGES (CDN\$/Metric Tonne)

	1994	1995	1996	1997	1998	1999	2000	2001	2002	2003	2004	2005
Aluminum Cans	1731	2045	2045	1827	1595	1608	1893	1700	1709	1619	1772	1775
Steel Cans							52	26	47	76	191	118
Glass (clear)	47	48	47	47	49	50	50	31	29	34	38	36
Glass (mixed)			0	(4)	(25)	(20)	(15)	(15)	(15)	(19)	(12)	(31)
PET	181	650	650	155	300	144	326	324	166	278	432	523
HDPE (mixed)	259	345	356	447	226	211	373	257	233	364	428	646
Plastic Tubs & Lids		100	100	76	66	3	5	5	0	12	51	99
Film Plastic	40	40	40	(4)	(5)	(12)	7	26	0	8	55	144
Polystyrene	88	110	125	125	125	125	125	125	75	75	75	75
Newspaper (ONP #8)	80	214	159	31	48	76	118	76	100	99	114	105
Corrugated (OCC)	94	159	214	97	73	99	112	55	106	89	114	103
Hardpack (OBB/OCC)	38	159	120	5	17	20	65	38	63	62	75	73
Boxboard (OBB)										43	62	56
Polycoat Containers		189	198	99	26	24	83	57	58	64	67	67
<b>Composite Index</b>							<b>134</b>	<b>95</b>	<b>113</b>	<b>114</b>	<b>131</b>	<b>127</b>

□ Indicates FOB the municipality

■ Indicates delivery to mill or industry

Notes:

- 1) Prices are for baled post-consumer residential materials (except glass, which is loose).
- 2) Prices are compiled from a range of municipal programs across Ontario combined with information from industry representatives. Prices may not be the same as actual prices being paid in any given program.
- 3) The CSR Composite Index is calculated using the overall composition of residential Blue Box material recovered and marketed in Ontario. Details available upon request.

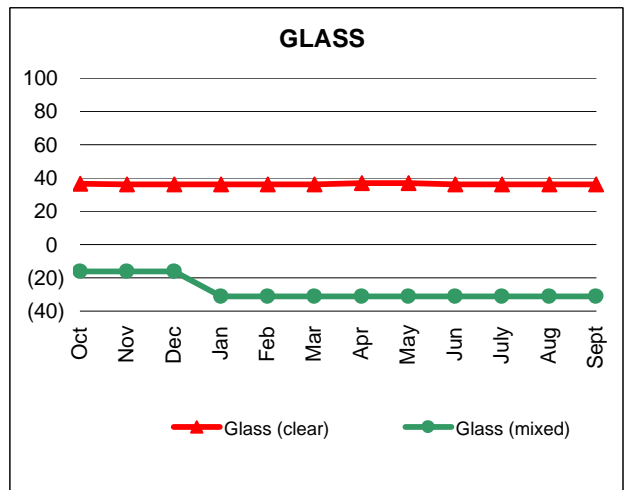
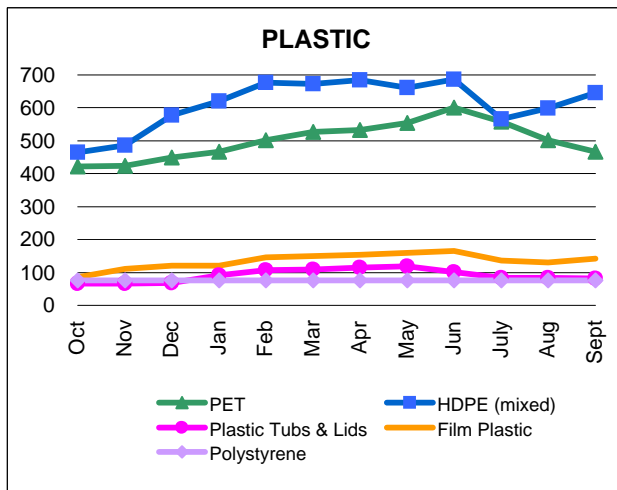
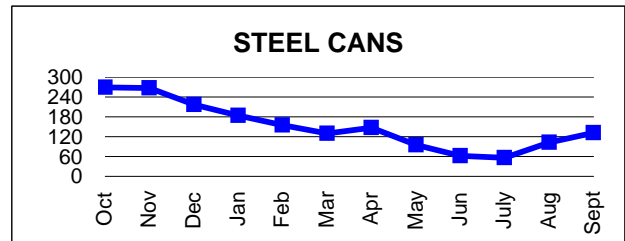
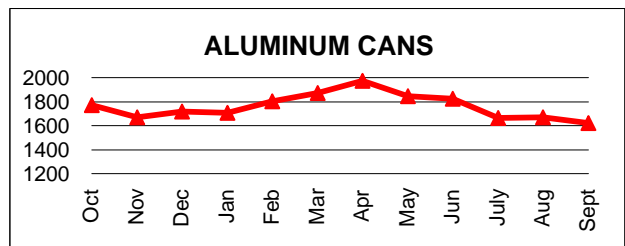
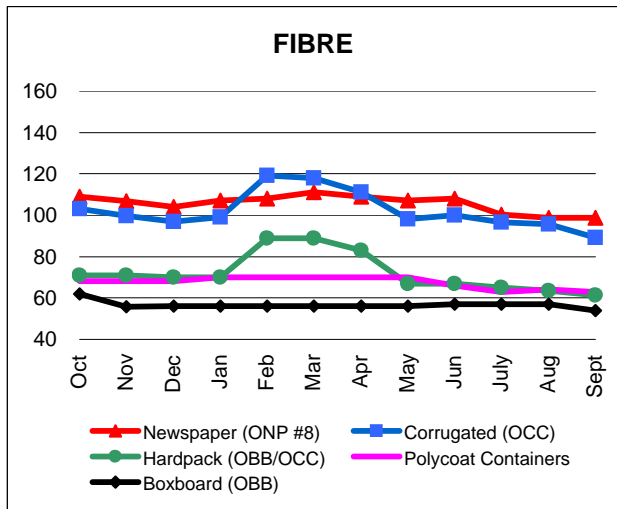
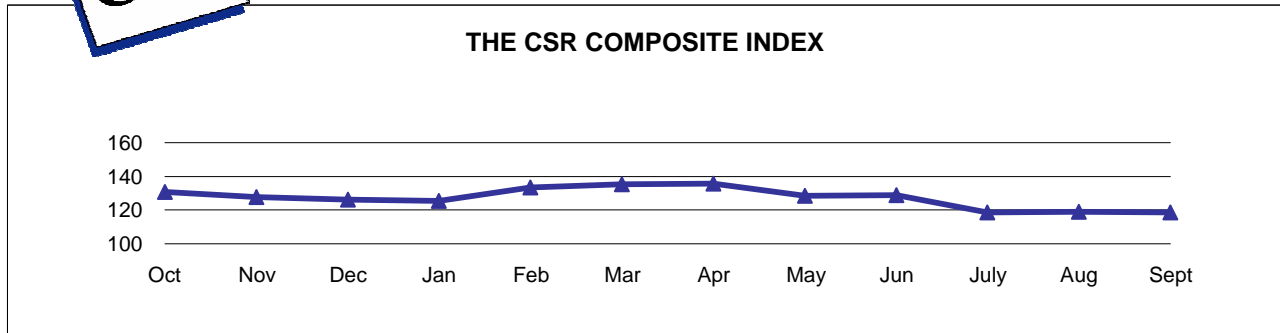
For more information:

John Dixie at 647-777-3366 (Toll-Free: 888-277-2762, Ext. 3366) email: [jdixie@csr.org](mailto:jdixie@csr.org)  
 CSR, 26 Wellington Street East, Suite 601, Toronto, Ontario, M5E 1S2  
 website: [www.csr.org](http://www.csr.org)



# The Price Sheet

Monthly Averages from Oct 2004 to Sept 2005  
(CDN\$/Metric Tonne)

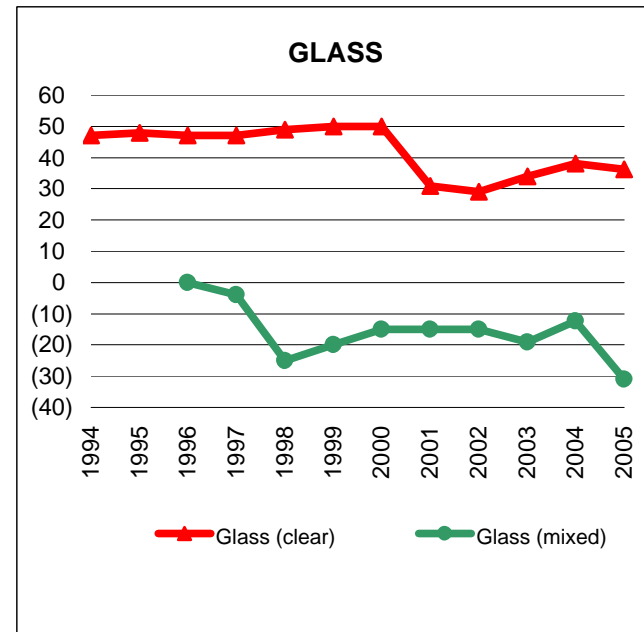
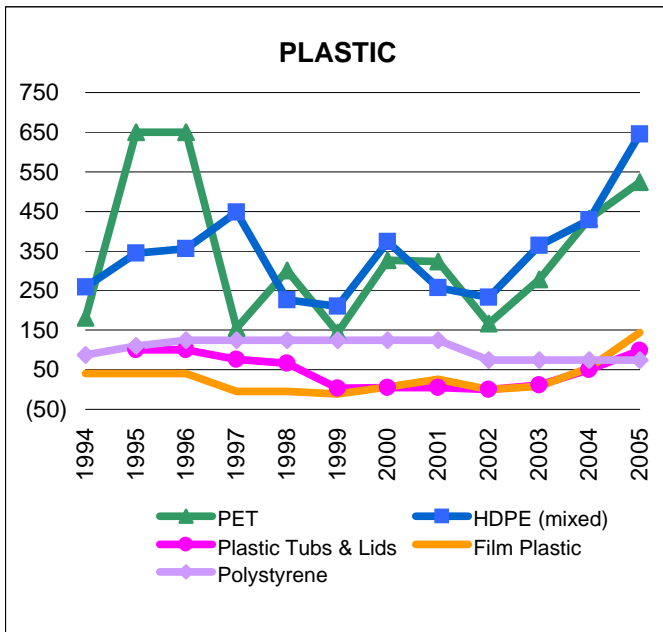
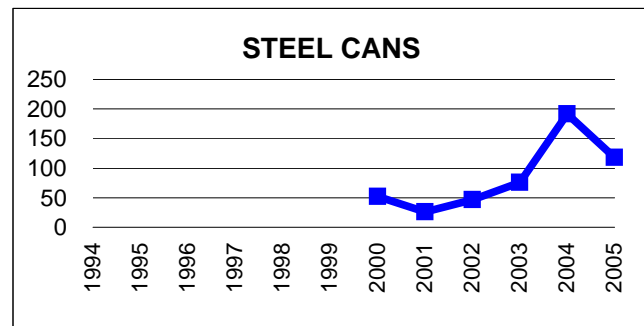
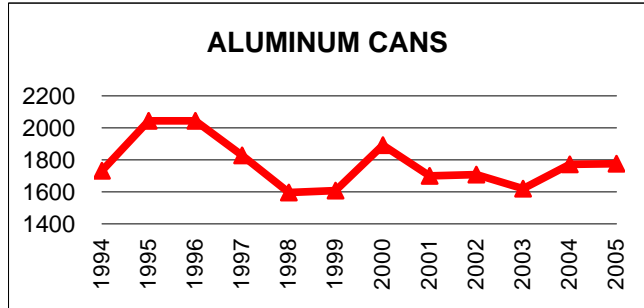
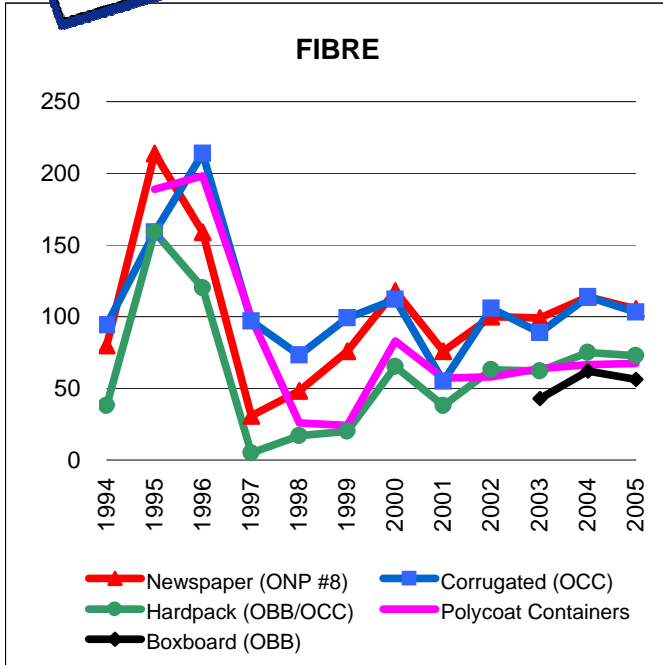


Graphs produced from Monthly Averages Table



# The Price Sheet

## Historical Yearly Averages (CDN\$/Metric Tonne)



Graphs produced from Yearly Averages Table



# The Price Sheet

## National Market Prices as of Sept 16, 2005

	QUARTERLY AVERAGES (CDN\$/Metric Tonne)											
	Western Canada				Central (Ontario)				Eastern Canada			
	Q4 Dec 04	Q1 Mar 05	Q2 Jun 05	Q3 Sept 05	Q4 Dec 04	Q1 Mar 05	Q2 Jun 05	Q3 Sept 05	Q4 Dec 04	Q1 Mar 05	Q1 Jun 05	Q3 Sept 05
Aluminum Cans	1654	1835	1737	1603	1719	1796	1823	1619	1737	1936	1722	1562
Steel Cans	64	64	64	100	217	156	62	132	137	93	60	89
Glass (clear/flint)	10	27	27	n/a	36	36	36	36	15	15	18	18
Glass (coloured/mixed)	n/a	n/a	n/a	n/a	(16)	(31)	(31)	(31)	n/a	n/a	n/a	n/a
PET (mixed)	460	526	580	530	450	498	601	466	473	498	589	529
HDPE (mixed)	329	438	513	588	578	656	686	646	487	704	679	614
HDPE (natural)	515	591	667	679	n/a	n/a	n/a	n/a	676	704	728	n/a
ONP (#8)	128	127	131	115	104	109	108	99	103	106	104	101
ONP (#6)	96	96	99	93	n/a	n/a	n/a	n/a	75	75	75	72
OCC	99	116	109	107	97	112	100	89	92	97	95	92
Residential (soft) Mix <sup>4</sup>	82	82	n/a	n/a	70	83	67	61	70	n/a	n/a	n/a
Polycoat Containers	n/a	n/a	n/a	n/a	68	70	66	63	46	46	n/a	n/a

Indicates FOB the municipality
  Indicates delivery to mill or industry

Notes:

- 1) Prices are for baled post-consumer residential materials (except glass, which is loose).
- 2) Prices are compiled from a range of municipal programs across Canada combined with information from industry representatives. Prices may not be the same as actual prices being paid in any given program.
- 3) Western Canada: BC, Alberta, Saskatchewan, Manitoba. Central Canada: Ontario. Eastern Canada: Quebec, PEI, Nova Scotia, New Brunswick, Newfoundland
- 4) Pricing for Central Canada (Ontario) is for OBB/OCC hard pack.

For more information:  
 John Dixie at 647-777-3366 (Toll-Free: 888-277-2762, Ext. 3366) email: [jdixie@csr.org](mailto:jdixie@csr.org)  
 CSR, 26 Wellington Street East, Suite 601, Toronto, Ontario, M5E 1S2  
 website: [www.csr.org](http://www.csr.org)