



# The Price Sheet

## Spot Market Price Trends as of July 15, 2005

### MONTHLY AVERAGES (CDN\$/Metric Tonne)

	Aug 2004	Sept 2004	Oct 2004	Nov 2004	Dec 2004	Jan 2005	Feb 2005	Mar 2005	Apr 2005	May 2005	Jun 2005	July 2005
Aluminum Cans	1799	1762	1770	1667	1719	1709	1805	1873	1973	1845	1823	1662
Steel Cans	227	212	269	267	217	184	155	129	147	95	62	55
Glass (clear)	39	37	37	36	36	36	36	36	37	37	36	36
Glass (mixed)	0	0	(16)	(16)	(16)	(31)	(31)	(31)	(31)	(31)	(31)	(31)
PET	440	425	422	423	450	466	502	526	533	554	601	558
HDPE (mixed)	379	403	464	487	578	620	677	672	684	662	686	565
Plastic Tubs & Lids	50	50	67	67	68	91	108	109	115	119	102	84
Film Plastic	50	75	85	111	120	120	145	149	153	159	166	136
Polystyrene	75	75	75	75	75	75	75	75	75	75	75	75
Newspaper (ONP #8)	114	114	109	107	104	107	108	111	109	107	108	100
Corrugated (OCC)	112	107	103	100	97	99	119	118	111	98	100	97
Hardpack (OBB/OCC)	75	75	71	71	70	70	89	89	83	67	67	65
Boxboard (OBB)	66	66	62	56	56	56	56	56	56	56	57	57
Polycoat Containers	67	67	68	68	68	70	70	70	70	70	66	63
<b>Composite Index</b>	<b>134</b>	<b>133</b>	<b>131</b>	<b>128</b>	<b>126</b>	<b>126</b>	<b>134</b>	<b>135</b>	<b>136</b>	<b>128</b>	<b>129</b>	<b>119</b>

### YEARLY AVERAGES (CDN\$/Metric Tonne)

	1994	1995	1996	1997	1998	1999	2000	2001	2002	2003	2004	2005
Aluminum Cans	1731	2045	2045	1827	1595	1608	1893	1700	1709	1619	1772	1813
Steel Cans							52	26	47	76	191	118
Glass (clear)	47	48	47	47	49	50	50	31	29	34	38	36
Glass (mixed)			0	(4)	(25)	(20)	(15)	(15)	(15)	(19)	(12)	(31)
PET	181	650	650	155	300	144	326	324	166	278	432	534
HDPE (mixed)	259	345	356	447	226	211	373	257	233	364	428	652
Plastic Tubs & Lids		100	100	76	66	3	5	5	0	12	51	104
Film Plastic	40	40	40	(4)	(5)	(12)	7	26	0	8	55	147
Polystyrene	88	110	125	125	125	125	125	125	75	75	75	75
Newspaper (ONP #8)	80	214	159	31	48	76	118	76	100	99	114	107
Corrugated (OCC)	94	159	214	97	73	99	112	55	106	89	114	106
Hardpack (OBB/OCC)	38	159	120	5	17	20	65	38	63	62	75	76
Boxboard (OBB)										43	62	56
Polycoat Containers		189	198	99	26	24	83	57	58	64	67	68

□ Indicates FOB the municipality

■ Indicates delivery to mill or industry

Notes:

- Prices are for baled post-consumer residential materials (except glass, which is loose).
- Prices are compiled from a range of municipal programs across Ontario combined with information from industry representatives. Therefore, prices may not be the same as actual prices being paid in any given program, and do not reflect special contract pricing arrangements that may exist.
- The CSR Composite Index is calculated using the overall composition of residential Blue Box material recovered and marketed in Ontario. Details available upon request.

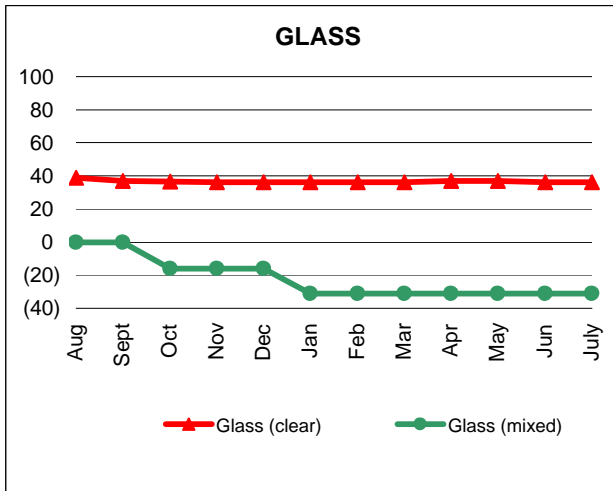
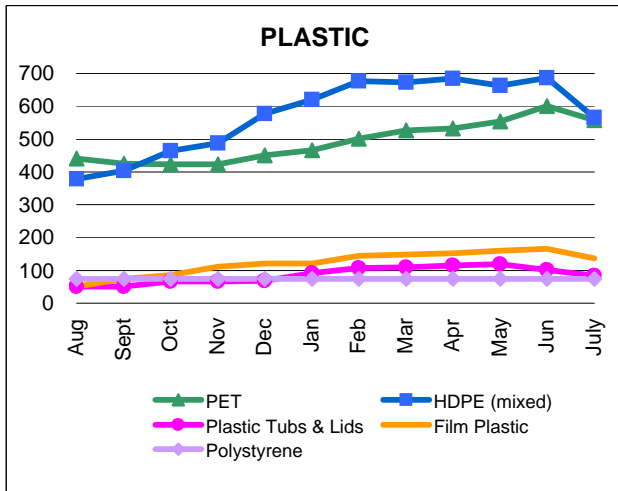
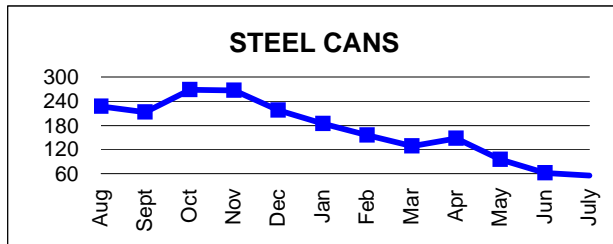
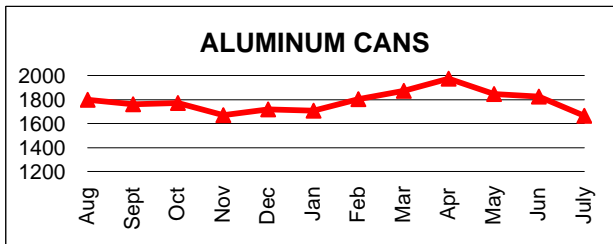
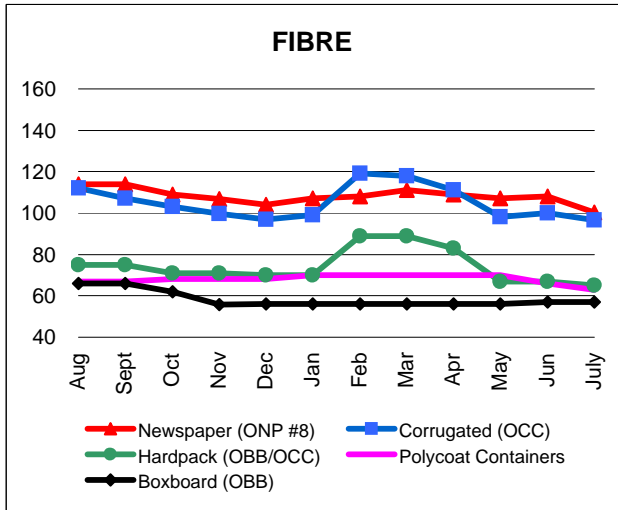
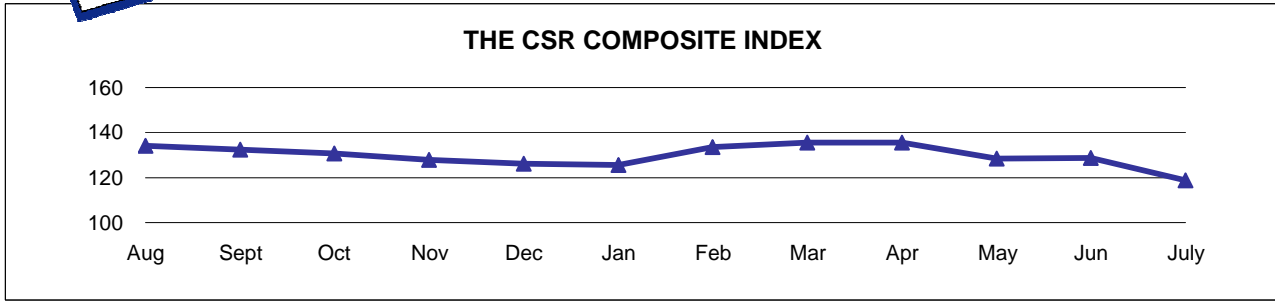
For more information: John Dixie at 647-777-3366 (Toll-Free: 888-277-2762, Ext. 3366) email: [jdixie@csr.org](mailto:jdixie@csr.org)  
 CSR, 26 Wellington Street East, Suite 601, Toronto, Ontario M5E 1S2  
 website: [www.csr.org](http://www.csr.org)

CSR © 2005



# The Price Sheet

## Monthly Averages from August 2004 to July 2005 (CDN\$/Metric Tonne)

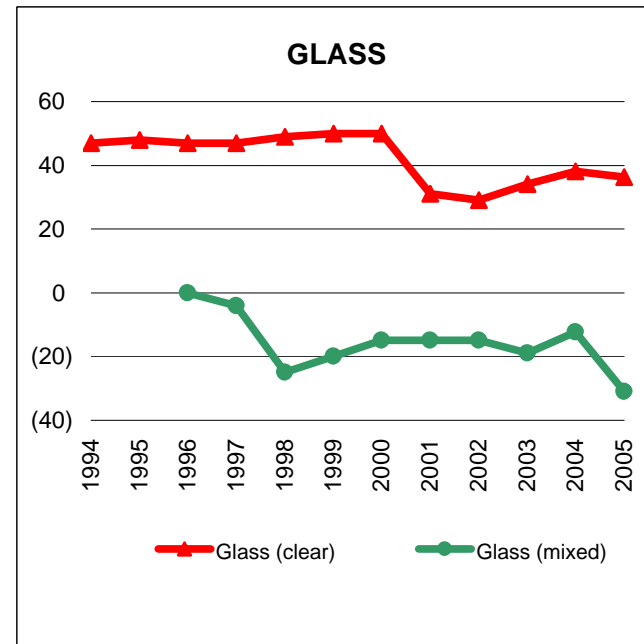
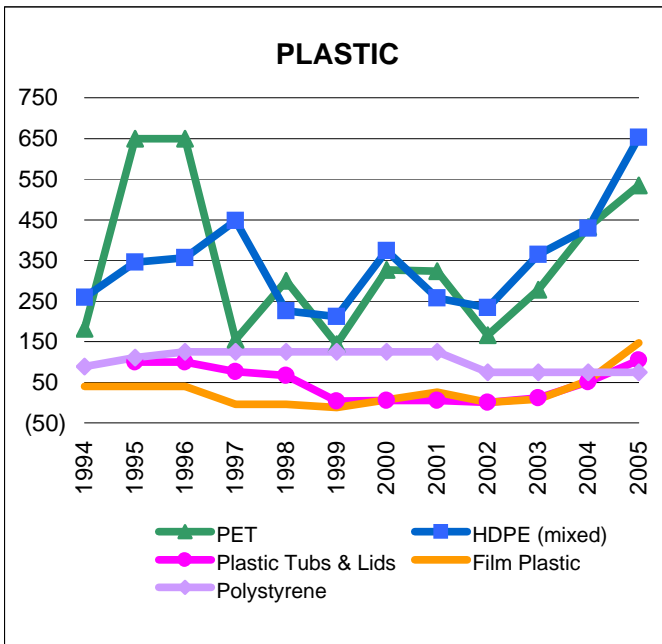
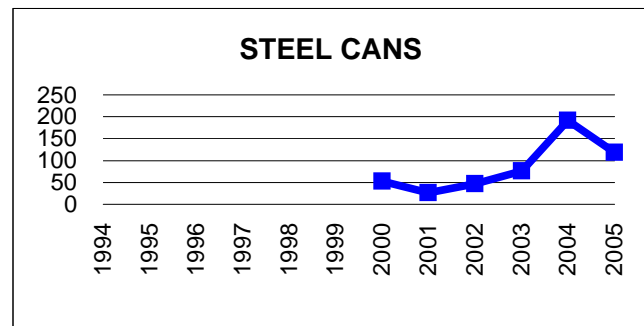
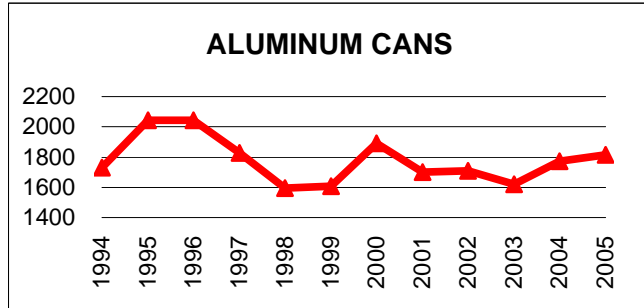
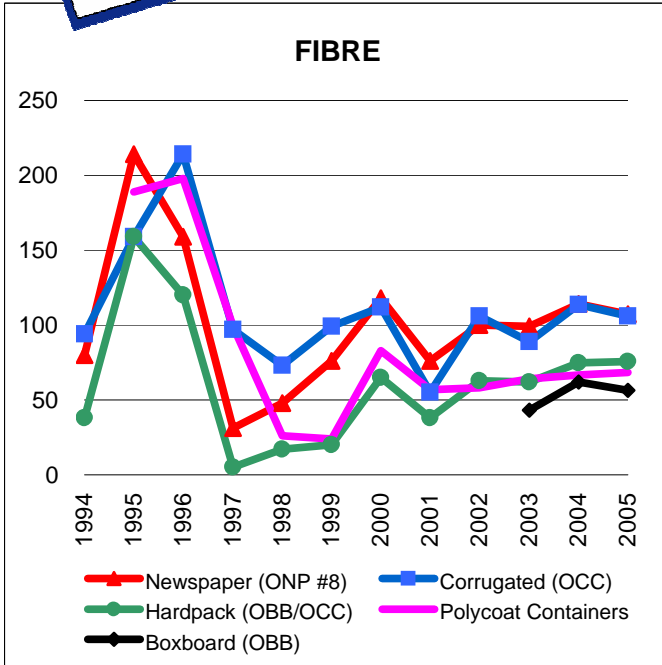


GRAPHS PRODUCED MONTHLY AVERAGES TABLE



# The Price Sheet

## Historical Yearly Averages (CDN\$/Metric Tonne)



GRAPHS PRODUCED FROM YEARLY AVERAGES TABLE