



The Price Sheet

Spot Market Price Trends as of June 15, 2005

MONTHLY AVERAGES (CDN\$/Metric Tonne)

| | Jul 2004 | Aug 2004 | Sept 2004 | Oct 2004 | Nov 2004 | Dec 2004 | Jan 2005 | Feb 2005 | Mar 2005 | Apr 2005 | May 2005 | Jun 2005 |
|------------------------|-------------|-------------|--------------|-------------|-------------|-------------|-------------|-------------|-------------|-------------|-------------|-------------|
| Aluminum Cans | 1861 | 1799 | 1762 | 1770 | 1667 | 1719 | 1709 | 1805 | 1873 | 1973 | 1845 | 1823 |
| Steel Cans | 221 | 227 | 212 | 269 | 267 | 217 | 184 | 155 | 129 | 147 | 95 | 62 |
| Glass (clear) | 39 | 39 | 37 | 37 | 36 | 36 | 36 | 36 | 36 | 37 | 37 | 36 |
| Glass (mixed) | 0 | 0 | 0 | (16) | (16) | (16) | (31) | (31) | (31) | (31) | (31) | (31) |
| PET | 440 | 440 | 425 | 422 | 423 | 450 | 466 | 502 | 526 | 533 | 554 | 601 |
| HDPE (mixed) | 380 | 379 | 403 | 464 | 487 | 578 | 620 | 677 | 672 | 684 | 662 | 686 |
| Plastic Tubs & Lids | 50 | 50 | 50 | 67 | 67 | 68 | 91 | 108 | 109 | 115 | 119 | 102 |
| Film Plastic | 50 | 50 | 75 | 85 | 111 | 120 | 120 | 145 | 149 | 153 | 159 | 166 |
| Polystyrene | 75 | 75 | 75 | 75 | 75 | 75 | 75 | 75 | 75 | 75 | 75 | 75 |
| Newspaper (ONP #8) | 116 | 114 | 114 | 109 | 107 | 104 | 107 | 108 | 111 | 109 | 107 | 108 |
| Corrugated (OCC) | 119 | 112 | 107 | 103 | 100 | 97 | 99 | 119 | 118 | 111 | 98 | 100 |
| Hardpack (OBB/OCC) | 75 | 75 | 75 | 71 | 71 | 70 | 70 | 89 | 89 | 83 | 67 | 67 |
| Boxboard (OBB) | 66 | 66 | 66 | 62 | 56 | 56 | 56 | 56 | 56 | 56 | 56 | 57 |
| Polycoat Containers | 66 | 67 | 67 | 68 | 68 | 68 | 70 | 70 | 70 | 70 | 70 | 66 |
| Composite Index | 136 | 134 | 133 | 131 | 128 | 126 | 126 | 134 | 135 | 136 | 128 | 129 |

YEARLY AVERAGES (CDN\$/Metric Tonne)

| | 1994 | 1995 | 1996 | 1997 | 1998 | 1999 | 2000 | 2001 | 2002 | 2003 | 2004 | 2005 |
|---------------------|------|------|------|------|------|------|------|------|------|------|------|------|
| Aluminum Cans | 1731 | 2045 | 2045 | 1827 | 1595 | 1608 | 1893 | 1700 | 1709 | 1619 | 1772 | 1838 |
| Steel Cans | | | | | | | 52 | 26 | 47 | 76 | 191 | 129 |
| Glass (clear) | 47 | 48 | 47 | 47 | 49 | 50 | 50 | 31 | 29 | 34 | 38 | 36 |
| Glass (mixed) | | | 0 | (4) | (25) | (20) | (15) | (15) | (15) | (19) | (12) | (31) |
| PET | 181 | 650 | 650 | 155 | 300 | 144 | 326 | 324 | 166 | 278 | 432 | 530 |
| HDPE (mixed) | 259 | 345 | 356 | 447 | 226 | 211 | 373 | 257 | 233 | 364 | 428 | 667 |
| Plastic Tubs & Lids | | 100 | 100 | 76 | 66 | 3 | 5 | 5 | 0 | 12 | 51 | 107 |
| Film Plastic | 40 | 40 | 40 | (4) | (5) | (12) | 7 | 26 | 0 | 8 | 55 | 149 |
| Polystyrene | 88 | 110 | 125 | 125 | 125 | 125 | 125 | 125 | 75 | 75 | 75 | 75 |
| Newspaper (ONP #8) | 80 | 214 | 159 | 31 | 48 | 76 | 118 | 76 | 100 | 99 | 114 | 108 |
| Corrugated (OCC) | 94 | 159 | 214 | 97 | 73 | 99 | 112 | 55 | 106 | 89 | 114 | 108 |
| Hardpack (OBB/OCC) | 38 | 159 | 120 | 5 | 17 | 20 | 65 | 38 | 63 | 62 | 75 | 78 |
| Boxboard (OBB) | | | | | | | | | | 43 | 62 | 56 |
| Polycoat Containers | | 189 | 198 | 99 | 26 | 24 | 83 | 57 | 58 | 64 | 67 | 69 |

□ Indicates FOB the municipality

■ Indicates delivery to mill or industry

Notes:

- Prices are for baled post-consumer residential materials (except glass, which is loose).
- Prices are compiled from a range of municipal programs across Ontario combined with information from industry representatives. Therefore, prices may not be the same as actual prices being paid in any given program, and do not reflect special contract pricing arrangements that may exist.
- The CSR Composite Index is calculated using the overall composition of residential Blue Box material recovered and marketed in Ontario. Details available upon request.

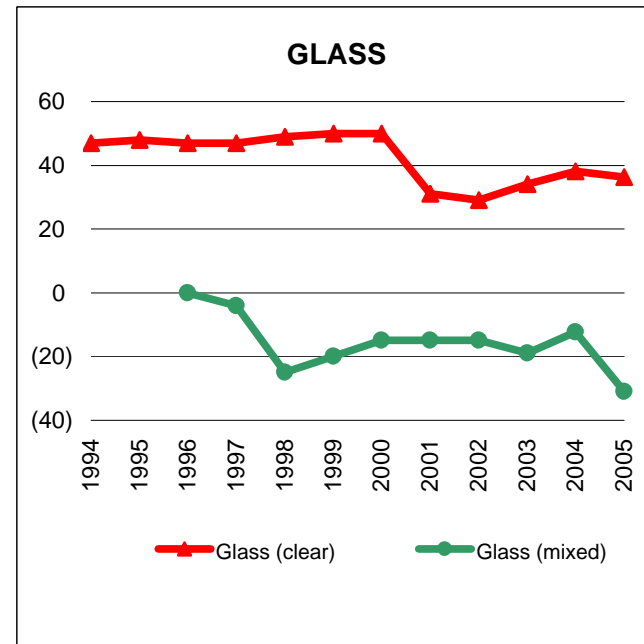
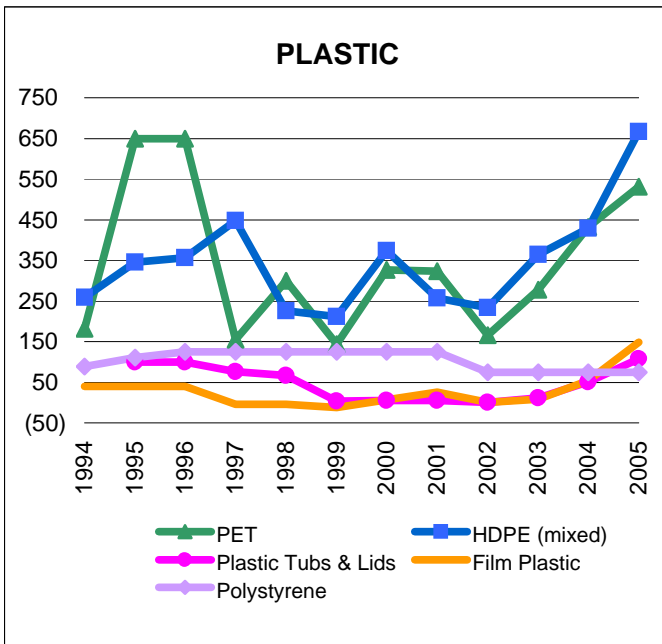
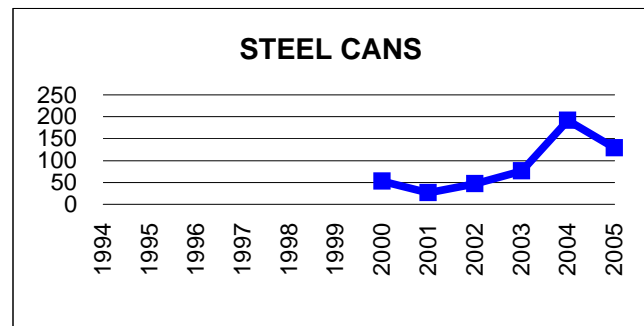
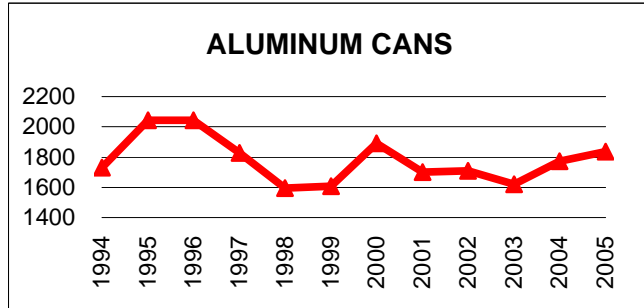
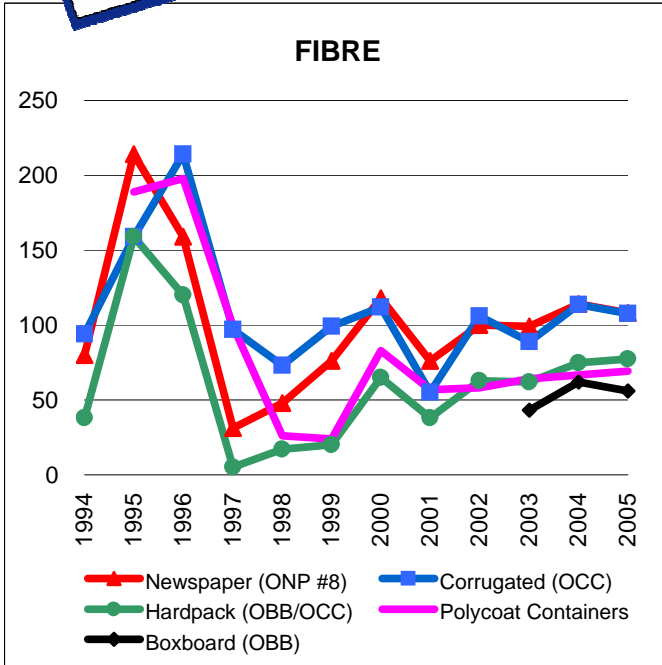
For more information: John Dixie at 647-777-3366 or email: dixie@csr.org
 CSR, 26 Wellington Street East, Suite 601, Toronto, Ontario M5E 1S2
 website: www.csr.org Toll-Free: 888-277-2762, Ext. 3366

CSR © 2005



The Price Sheet

Historical Yearly Averages (CDN\$/Metric Tonne)

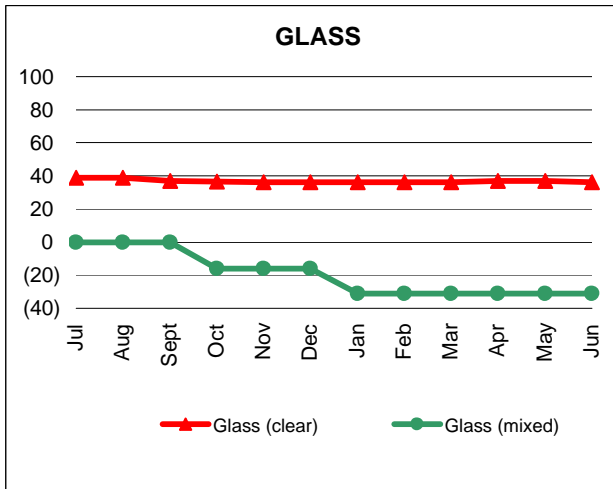
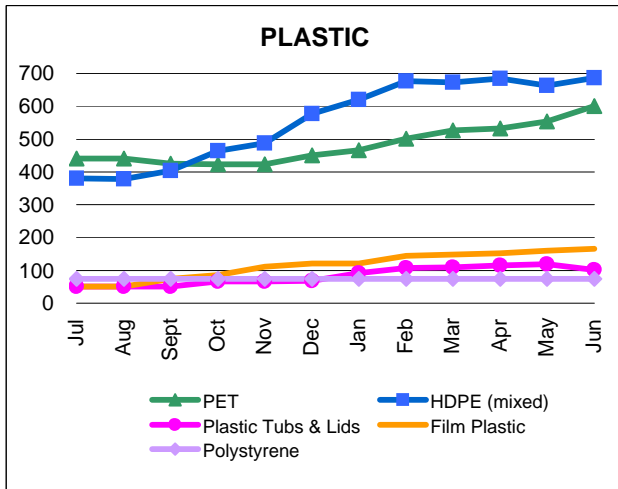
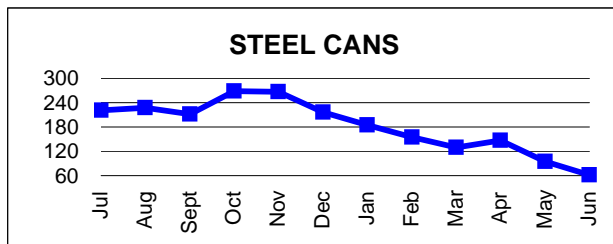
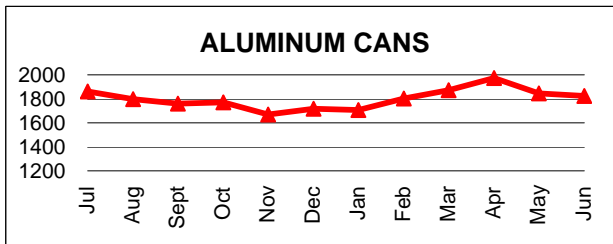
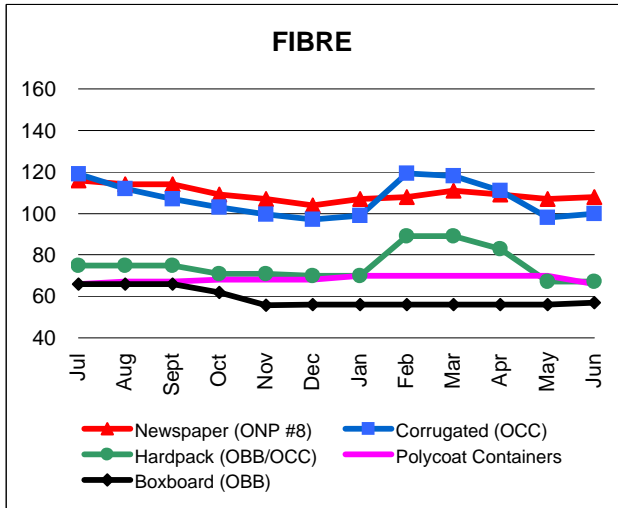
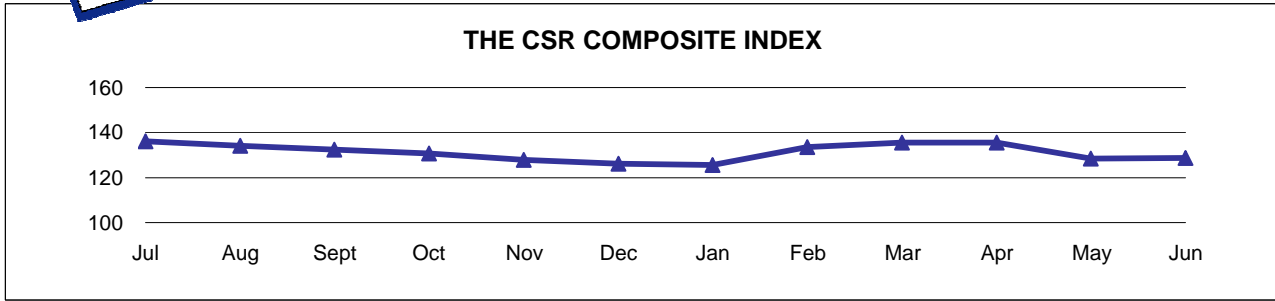


GRAPHS PRODUCED FROM YEARLY AVERAGES TABLE



The Price Sheet

Monthly Averages from July 2004 to June 2005 (CDN\$/Metric Tonne)



GRAPHS PRODUCED MONTHLY AVERAGES TABLE



The Price Sheet

National Market Prices as of June 15, 2005

| MATERIALS | Quarterly Averages in Canadian \$/Metric Tonne | | | | | | | | | | | |
|-------------------------------------|--|-----------------|-----------------|-----------------|-------------------|-----------------|-----------------|-----------------|------------------|-----------------|-----------------|-----------------|
| | Western Canada | | | | Central (Ontario) | | | | Eastern Canada | | | |
| | Q3 Sept 04 | Q4 Dec 04 | Q1 Mar 05 | Q2 Jun 05 | Q3 Sept 04 | Q4 Dec 04 | Q1 Mar 05 | Q2 Jun 05 | Q3 Sept 04 | Q4 Dec 04 | Q1 Mar 05 | Q1 Jun 05 |
| Aluminum Cans | 1686 | 1654 | 1835 | 1737 | 1762 | 1719 | 1796 | 1823 | 1800 | 1737 | 1936 | 1722 |
| Steel Cans | 46 | 64 | 64 | 64 | 212 | 217 | 156 | 62 | 96 | 137 | 93 | 60 |
| Glass (clear/flint) | 10 | 10 | 27 | 27 | 37 | 36 | 36 | 36 | 15 | 15 | 15 | 18 |
| Glass (coloured/mixed) | n/a | n/a | n/a | n/a | 0 | (16) | (31) | (31) | n/a | n/a | n/a | n/a |
| PET (mixed) | 451 | 460 | 526 | 580 | 425 | 450 | 498 | 601 | 434 | 473 | 498 | 589 |
| HDPE (mixed) | 243 | 329 | 438 | 513 | 403 | 578 | 656 | 686 | 349 | 487 | 704 | 679 |
| HDPE (natural) | 552 | 515 | 591 | 667 | n/a | n/a | n/a | n/a | 539 | 676 | 704 | 728 |
| ONP (#8) | 130 | 128 | 127 | 131 | 114 | 104 | 109 | 108 | 104 | 103 | 106 | 104 |
| ONP (#6) | 96 | 96 | 96 | 99 | n/a | n/a | n/a | n/a | 78 | 75 | 75 | 75 |
| OCC | 99 | 99 | 116 | 109 | 107 | 97 | 112 | 100 | 108 | 92 | 97 | 95 |
| Residential (soft) Mix ⁴ | 82 | 82 | 82 | n/a | 75 | 70 | 83 | 67 | 70 | 70 | n/a | n/a |
| Polycoat Containers | n/a | n/a | n/a | n/a | 67 | 68 | 70 | 66 | 46 | 46 | 46 | n/a |

Indicates FOB the municipality
 Indicates delivery to mill or industry

Notes:

- 1) Prices are for baled post-consumer residential materials (except glass, which is loose).
- 2) Prices are compiled from a range of municipal programs across Canada combined with information from industry representatives. Therefore, prices may not be the same as actual prices being paid in any given program, and do not reflect special contract pricing arrangements that may exist.
- 3) Western Canada: BC, Alberta, Saskatchewan, Manitoba. Central Canada: Ontario. Eastern Canada: Quebec, PEI, Nova Scotia, New Brunswick, Newfoundland
- 4) Pricing for Central Canada (Ontario) is for OBB/OCC hard pack.

For more information:

contact John Dixie at 647-777-3366 or email: dixie@csr.org
 CSR, 26 Wellington Street East, Suite 601, Toronto, Ontario M5E 1S2
 Website: www.csr.org Toll-Free: 888-277-2762, Ext. 3366