



The Price Sheet

Spot Market Price Trends as of March 15, 2005

MONTHLY AVERAGES (CDN\$/Metric Tonne)

	Apr 2004	May 2004	Jun 2004	Jul 2004	Aug 2004	Sept 2004	Oct 2004	Nov 2004	Dec 2004	Jan 2005	Feb 2005	Mar 2005
Aluminum Cans	1831	1849	1793	1861	1799	1762	1770	1667	1719	1709	1805	1873
Steel Cans	127	113	133	221	227	212	269	267	217	184	155	129
Glass (clear)	39	39	39	39	39	37	37	36	36	36	36	36
Glass (mixed)	(20)	(20)	0	0	0	0	(16)	(16)	(16)	(31)	(31)	(31)
PET	441	384	448	440	440	425	422	423	450	466	502	526
HDPE (mixed)	397	389	375	380	379	403	464	487	578	620	677	672
Plastic Tubs & Lids	43	43	43	50	50	50	67	67	68	91	108	109
Film Plastic	25	33	45	50	50	75	85	111	120	120	145	149
Polystyrene	75	75	75	75	75	75	75	75	75	75	75	75
Newspaper (ONP #8)	116	132	116	116	114	114	109	107	104	107	108	111
Corrugated (OCC)	138	133	123	119	112	107	103	100	97	99	119	118
Hardpack (OBB/OCC)	89	n/a	76	75	75	75	71	71	70	70	89	89
Boxboard (OBB)	65	68	66	66	66	66	62	56	56	56	56	56
Polycoat Containers	66	66	66	66	67	67	68	68	68	70	70	70
Composite Index	132	137	132	136	134	133	131	128	126	126	134	135

YEARLY AVERAGES (CDN\$/Metric Tonne)

	1994	1995	1996	1997	1998	1999	2000	2001	2002	2003	2004	2005
Aluminum Cans	1731	2045	2045	1827	1595	1608	1893	1700	1709	1619	1772	1796
Steel Cans							52	26	47	76	191	156
Glass (clear)	47	48	47	47	49	50	50	31	29	34	38	36
Glass (mixed)			0	(4)	(25)	(20)	(15)	(15)	(15)	(19)	(12)	(31)
PET	181	650	650	155	300	144	326	324	166	278	432	498
HDPE (mixed)	259	345	356	447	226	211	373	257	233	364	428	656
Plastic Tubs & Lids		100	100	76	66	3	5	5	0	12	51	103
Film Plastic	40	40	40	(4)	(5)	(12)	7	26	0	8	55	138
Polystyrene	88	110	125	125	125	125	125	125	75	75	75	75
Newspaper (ONP #8)	80	214	159	31	48	76	118	76	100	99	114	109
Corrugated (OCC)	94	159	214	97	73	99	112	55	106	89	114	112
Hardpack (OBB/OCC)	38	159	120	5	17	20	65	38	63	62	75	83
Boxboard (OBB)										43	62	56
Polycoat Containers		189	198	99	26	24	83	57	58	64	67	70

□ Indicates FOB the municipality

■ Indicates delivery to mill or industry

Notes:

- Prices are for baled post-consumer residential materials (except glass, which is loose).
- Prices are compiled from a range of municipal programs across Ontario combined with information from industry representatives. Therefore, prices may not be the same as actual prices being paid in any given program, and do not reflect special contract pricing arrangements that may exist.
- The CSR Composite Index is calculated using the overall composition of residential Blue Box material recovered and marketed in Ontario. Details available upon request.

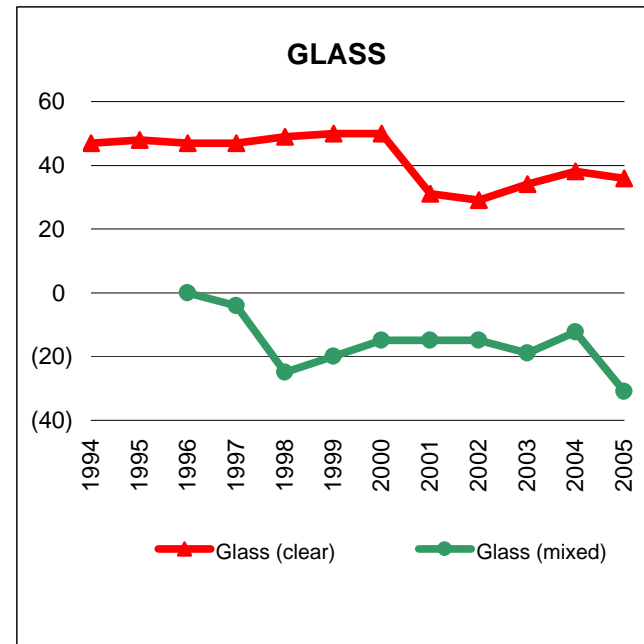
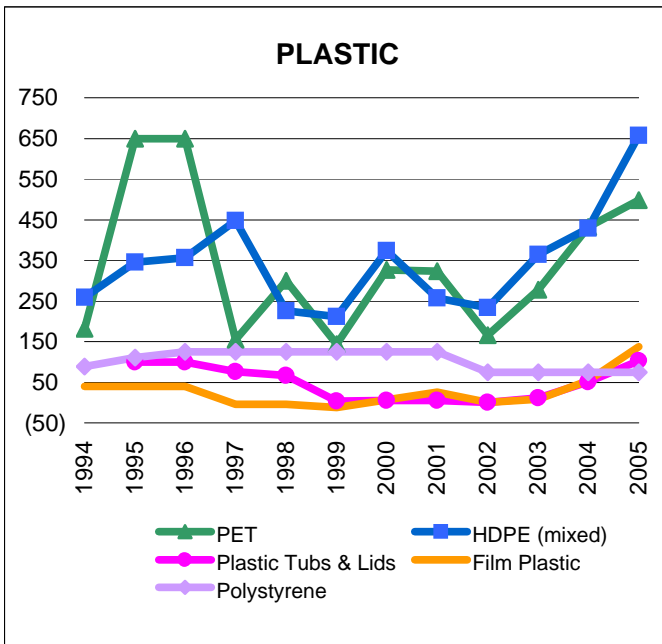
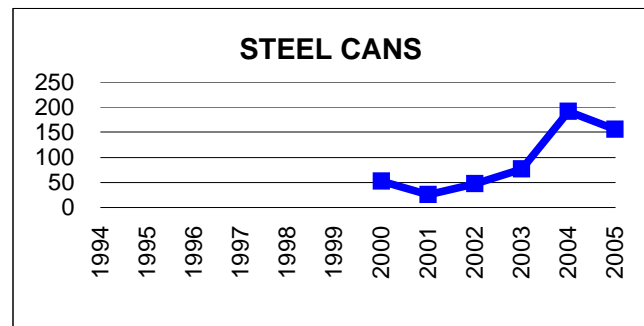
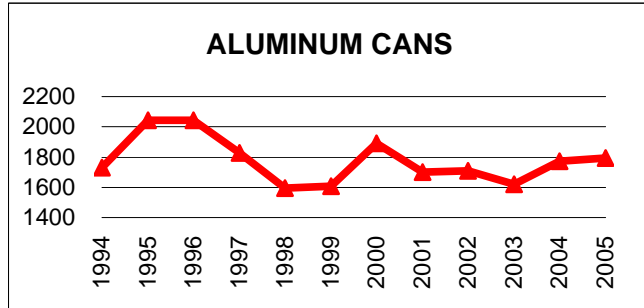
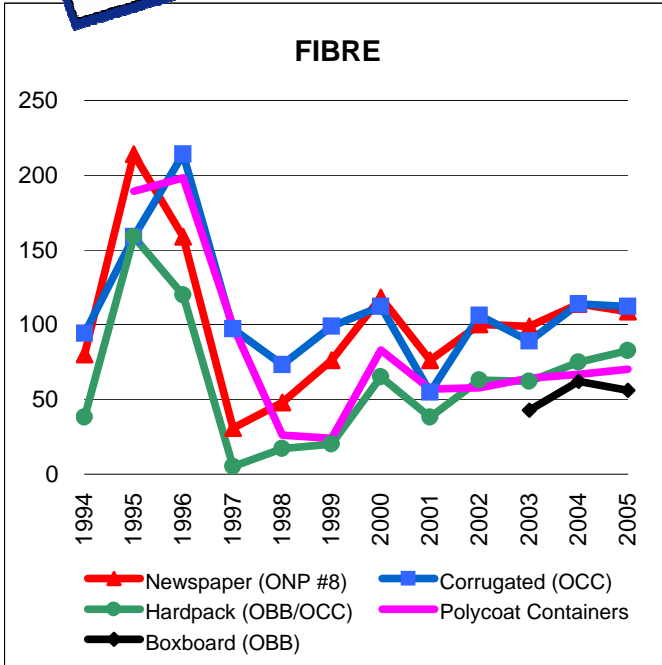
For more information: John Dixie at 647-777-3366 or email: dixie@csr.org
 CSR, 26 Wellington Street East, Suite 601, Toronto, Ontario M5E 1S2
 website: www.csr.org Toll-Free: 888-277-2762, Ext. 3366

CSR © 2005



The Price Sheet

Historical Yearly Averages (CDN\$/Metric Tonne)

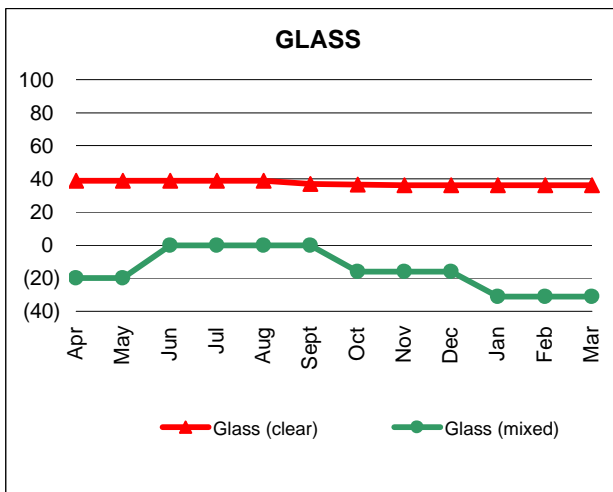
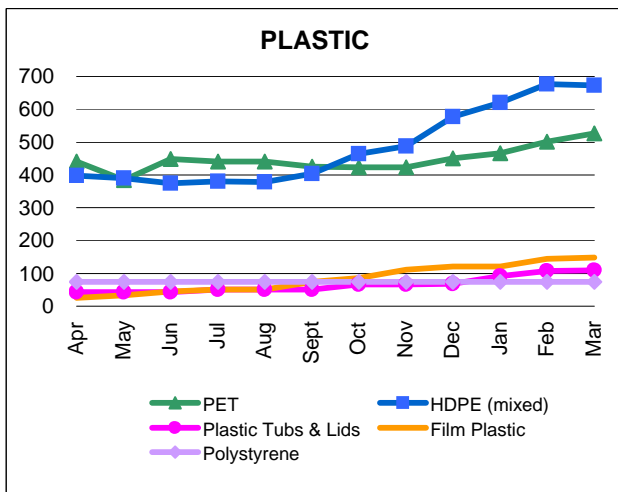
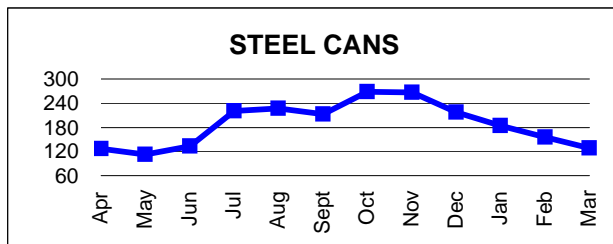
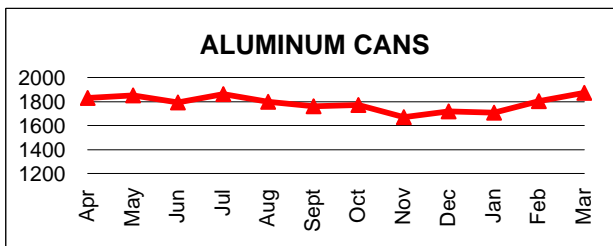
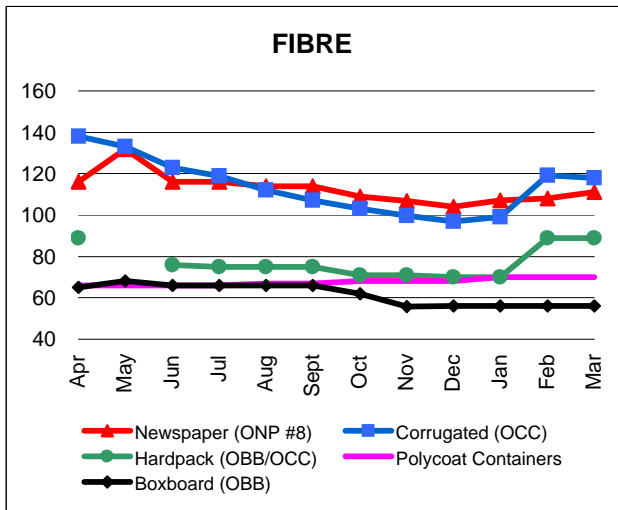
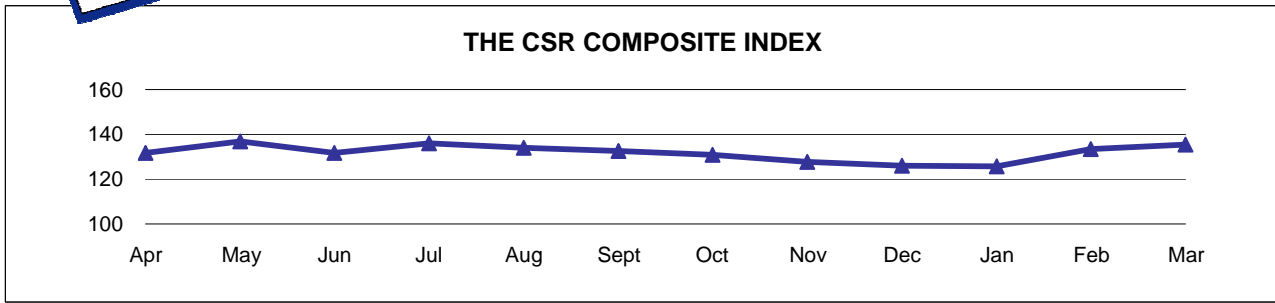


GRAPHS PRODUCED FROM YEARLY AVERAGES TABLE



The Price Sheet

Monthly Averages from April 2004 to March 2005
(CDN\$/Metric Tonne)



* Hardpack data for May was not available

GRAPHS PRODUCED MONTHLY AVERAGES TABLE



The Price Sheet

National Market Prices as of March 15, 2005

MATERIALS	Quarterly Averages in Canadian \$/Metric Tonne											
	Western Canada				Central (Ontario)				Eastern Canada			
	Q2 June 04	Q3 Sept 04	Q4 Dec 04	Q1 Mar 05	Q2 June 04	Q3 Sept 04	Q4 Dec 04	Q1 Mar 05	Q2 June 04	Q3 Sept 04	Q4 Dec 04	Q1 Mar 05
Aluminum Cans	1780	1686	1654	1835	1793	1762	1719	1796	1729	1800	1737	1936
Steel Cans	46	46	64	64	133	212	217	156	132	96	137	93
Glass (clear/flint)	10	10	10	27	39	37	36	36	15	15	15	15
Glass (coloured/mixed)	n/a	n/a	n/a	n/a	0	0	(16)	(31)	n/a	n/a	n/a	n/a
PET (mixed)	460	451	460	526	448	425	450	498	439	434	473	498
HDPE (mixed)	302	243	329	438	375	403	578	656	407	349	487	704
HDPE (natural)	538	552	515	591	n/a	n/a	n/a	n/a	483	539	676	704
ONP (#8)	133	130	128	127	116	114	104	109	120	104	103	106
ONP (#6)	98	96	96	96	n/a	n/a	n/a	n/a	89	78	75	75
OCC	137	99	99	116	123	107	97	112	130	108	92	97
Residential (soft) Mix ⁴	84	82	82	82	76	75	70	83	60	70	70	n/a
Polycoat Containers	n/a	n/a	n/a	n/a	66	67	68	70	55	46	46	46

Indicates FOB the municipality
 Indicates delivery to mill or industry

Notes:

- 1) Market prices are for baled materials (except glass).
- 2) The market prices are based on an amalgamation of data from a network of contacts and, as such, do not reflect actual market prices being paid for residential material across Canada.
- 3) Western Canada: BC, Alberta, Saskatchewan, Manitoba. Central Canada: Ontario. Eastern Canada: Quebec, PEI, Nova Scotia, New Brunswick, Newfoundland
- 4) Pricing for Central Canada (Ontario) is for OBB/OCC hard pack.

For more information:

contact John Dixie at 647-777-3366 or email: dixie@csr.org
 CSR, 26 Wellington Street East, Suite 601, Toronto, Ontario M5E 1S2
 Website: www.csr.org Toll-Free: 888-277-2762, Ext. 3366