



The Price Sheet

Market Price Trends as of November 15, 2004

2003 - 2004 MONTHLY ROLLING AVERAGE in Canadian \$/Metric Tonne

MATERIALS	Dec	Jan	Feb	Mar	Apr	May	Jun	Jul	Aug	Sept	Oct	Nov
Aluminum Cans	1546	1652	1789	1769	1831	1849	1793	1861	1799	1762	1770	1667
Steel Cans	99	128	179	203	127	113	133	221	227	212	269	267
Glass (clear)	39	39	39	39	39	39	39	39	39	37	37	36
Glass (mixed)	(20)	(20)	(20)	(20)	(20)	(20)	0	0	0	0	(16)	(16)
PET	411	409	443	453	441	384	448	440	440	425	422	423
HDPE (mixed)	431	425	433	429	397	389	375	380	379	403	464	487
Plastic Tubs & Lids	43	43	43	43	43	43	43	50	50	50	67	67
Film Plastic	20	20	20	20	25	33	45	50	50	75	85	111
Polystyrene	75	75	75	75	75	75	75	75	75	75	75	75
ONP (#8)	94	93	118	128	116	132	116	116	114	114	109	107
OCC	76	78	118	138	138	133	123	119	112	107	103	100
OBB/OCC (Hard Pack)	50	54	79	89	89	n/a	76	75	75	75	71	71
Boxboard (OBB)	41	46	63	63	65	68	66	66	66	66	62	56
Polycoat Containers	66	66	66	66	66	66	66	66	67	67	68	68
Composite Index*	112	108	133	142	132	137	132	136	134	133	131	128

Please note that Hard Pack has been corrected for March from \$79 to \$89 and subsequently the Composite Index has been adjusted from \$141 to \$142.

1994 to 2004 YEARLY AVERAGE in Canadian \$/Metric Tonne

YTD

MATERIALS	1994	1995	1996	1997	1998	1999	2000	2001	2002	2003	2004
Aluminum Cans	1731	2045	2045	1827	1595	1608	1893	1700	1709	1619	1777
Steel Cans							52	26	47	76	189
Glass (clear)	47	48	47	47	49	50	50	31	29	34	38
Glass (mixed)			0	(4)	(25)	(20)	(15)	(15)	(15)	(19)	(12)
PET	181	650	650	155	300	144	326	324	166	278	430
HDPE (mixed)	259	345	356	447	226	211	373	257	233	364	415
Plastic Tubs & Lids		100	100	76	66	3	5	5	0	12	49
Film Plastic	40	40	40	(4)	(5)	(12)	7	26	0	8	49
Polystyrene	88	110	125	125	125	125	125	125	75	75	75
ONP (#8)	80	214	159	31	48	76	118	76	100	99	115
OCC	94	159	214	97	73	99	112	55	106	89	115
OBB/OCC (Hard Pack)	38	159	120	5	17	20	65	38	63	62	75
Boxboard (OBB)										43	62
Polycoat Containers		189	198	99	26	24	83	57	58	64	67

☐ Indicates FOB the municipality

☐ Indicates delivery to mill or industry

Notes:

- 1) Market prices are for baled materials (except glass).
- 2) The market prices are based on an amalgamation of data from a network of contacts and, as such, do not reflect actual market prices being paid for residential material across Ontario.
- 3) The CSR Composite Index is calculated using a provincial average of multi-material program composition (effective January 2000, the index reflects broker's prices for steel). Details available upon request.

For more information: John Dixie at 647-777-3366 or email: dixie@csr.org

CSR, 26 Wellington Street East, Suite 601, Toronto, Ontario M5E 1S2

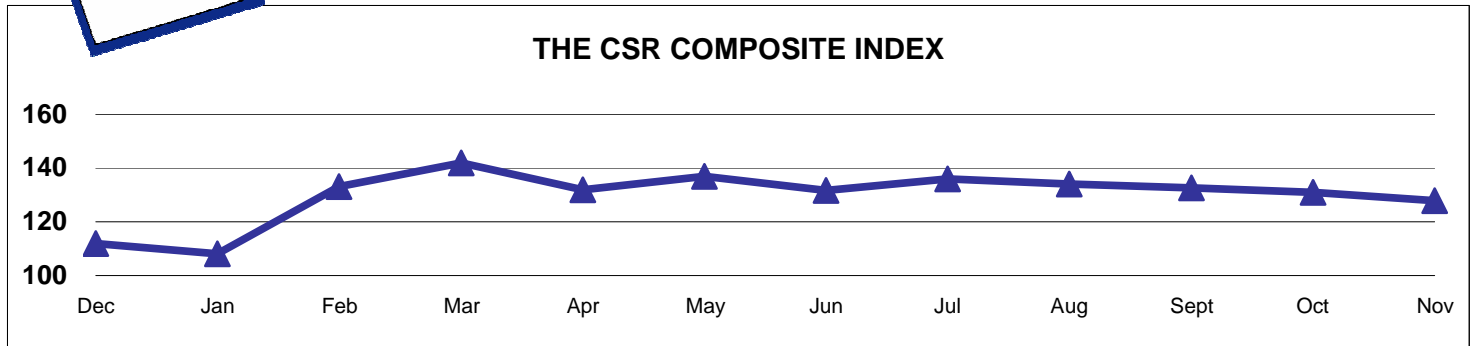
website: www.csr.org Toll-Free: 888-277-2762, Ext. 3366

CSR © 2004

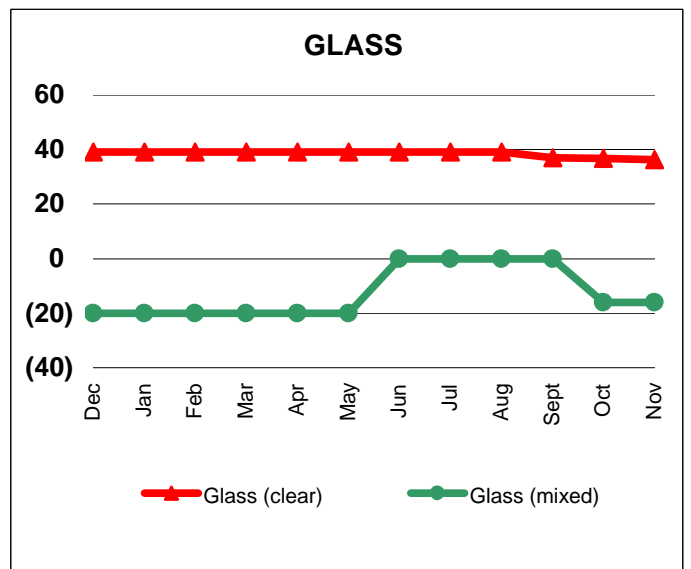
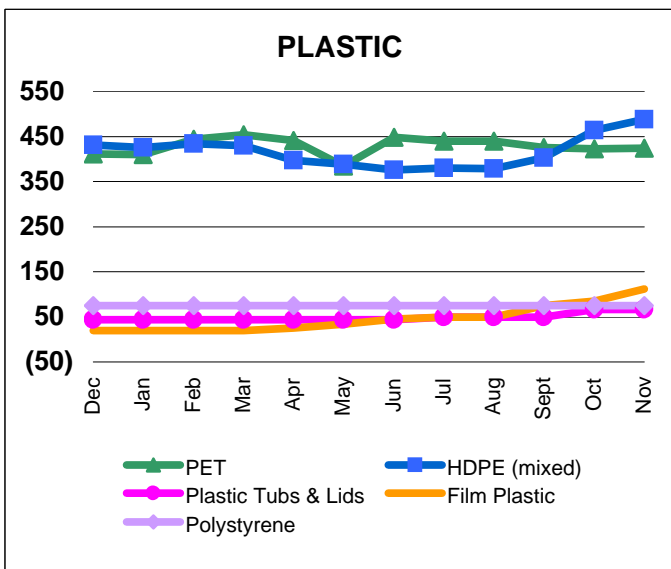
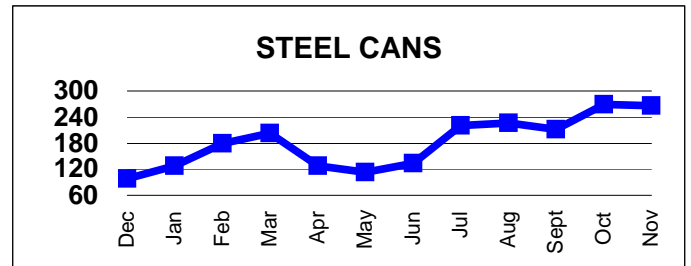
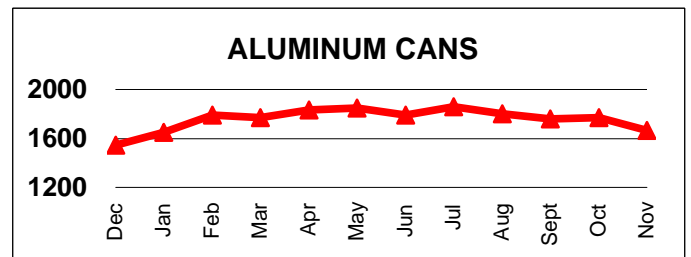
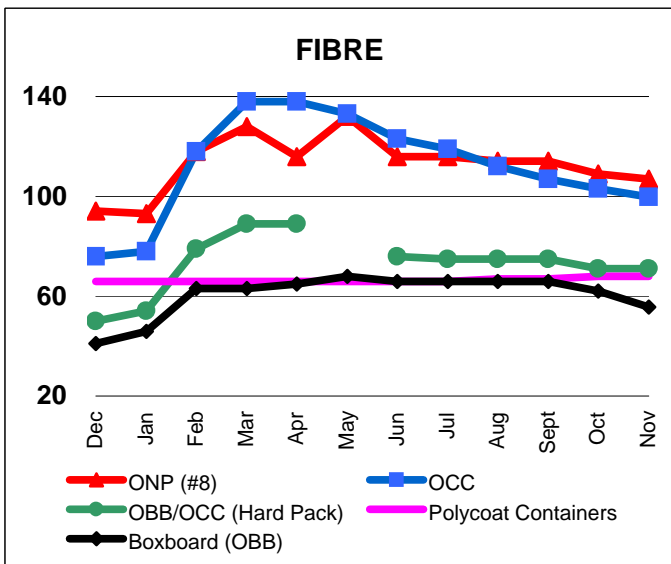


The Price Sheet

12 Month Rolling Average (CDN \$ /MT)



*The Composite Index calculation was revised January 2004 to reflect updated municipal recycling program tonnage data.



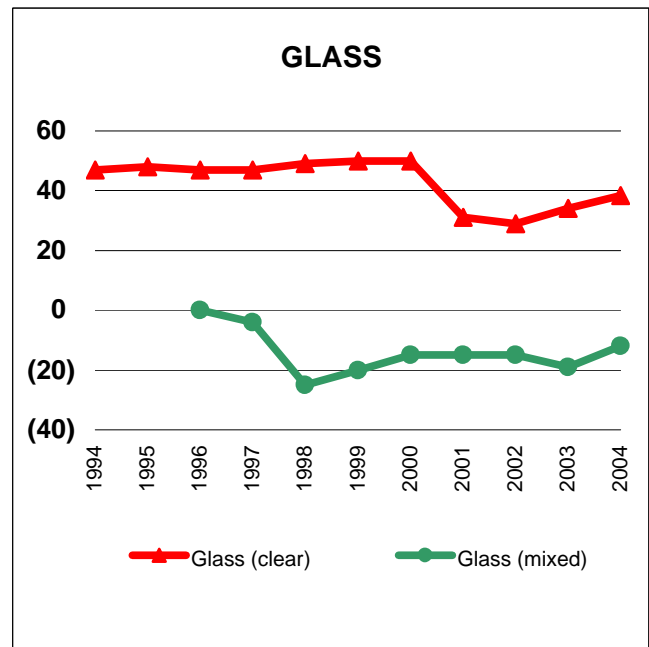
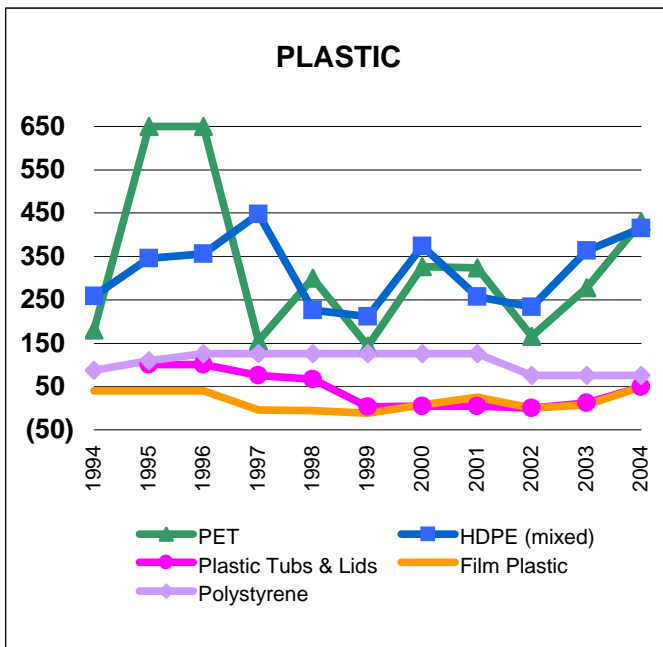
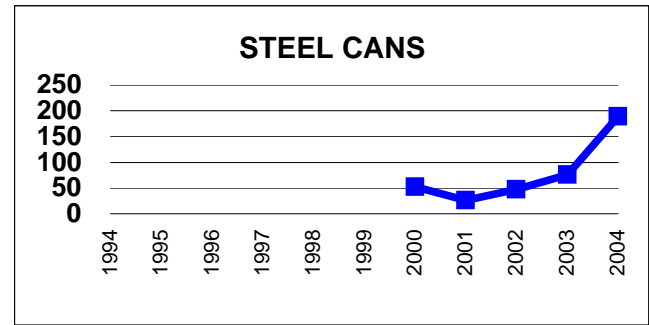
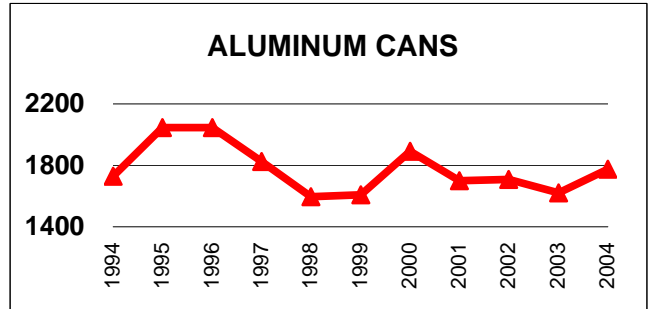
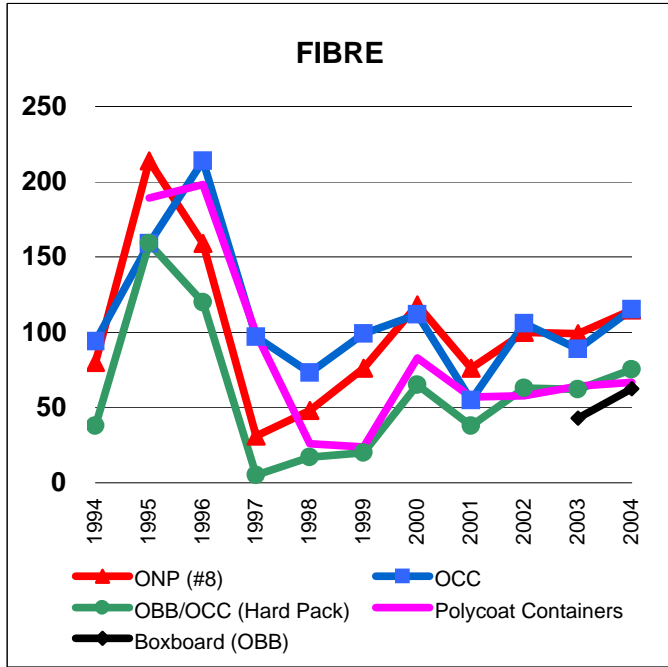
* May Hard Pack data was not available

GRAPHS PRODUCED FROM MONTHLY ROLLING AVERAGE TABLE



The Price Sheet

Historical Averages (CDN \$ /MT)



GRAPHS PRODUCED FROM YEARLY AVERAGE TABLE