



The Price Sheet

Market Price Trends Reported as of July 15, 2003

	CURRENT \$ (2002-2003)											
MATERIALS	Aug	Sep	Oct	Nov	Dec	Jan	Feb	Mar	Apr	May	Jun	Jul
Aluminum Cans	1542	1604	1680	1750	1767	1820	1829	1796	1693	1601	1565	1449
Steel Cans	60	60	60	57	57	79	80	76	75	64	65	64
Glass (clear)	28	28	28	28	28	28	28	34	34	34	34	34
Glass (coloured)	(15)	(15)	(15)	(15)	(15)	(15)	(15)	(15)	(17)	(17)	(17)	(17)
Glass (3 coloured)	(15)	(15)	(15)	(15)	(15)	(15)	(15)	(15)	(20)	(20)	(20)	(20)
PET	170	170	178	180	182	189	194	205	216	258	259	252
HDPE (mixed)	305	305	319	319	292	259	253	309	338	358	407	397
Plastic Tubs & Lids	0	0	0	0	0	0	0	0	0	0	0	0
Film Plastic	0	0	0	0	0	0	0	0	0	0	0	0
Polystyrene	75	75	75	75	75	75	75	75	75	75	75	75
ONP (#8)	104	117	121	129	123	104	104	113	111	91	95	89
OCC	165	127	112	108	99	85	82	101	105	105	91	84
OBB/OCC (Hard Pack)	115	83	72	66	61	49	52	76	70	70	68	68
Polycoat Containers	60	60	60	60	60	60	60	60	60	60	65	66
CSR Composite Index	125	122	125	127	132	117	117	125	122	116	110	103

* ONP, OCC and the Composite Index for June are corrected from previously published version

	TWELVE MONTH ROLLING AVERAGE \$ (1991-2002)											
MATERIALS	1991	1992	1993	1994	1995	1996	1997	1998	1999	2000	2001	2002
Aluminum Cans	866	838	758	1731	2045	2045	1827	1595	1608	1893	1700	1675
Steel Cans										52	26	66
Glass (clear)	47	47	47	47	48	47	47	49	50	50	31	31
Glass (coloured)	44	44	44	44	44	42	39	27	24	24	(11)	(16)
Glass (3 coloured)						0	(4)	(25)	(20)	(15)	(15)	(17)
PET	220	141	141	181	650	650	155	300	144	326	324	204
HDPE (mixed)	90	90	90	259	345	356	447	226	211	373	257	322
Plastic Tubs & Lids					100	100	76	66	3	5	5	0
Film Plastic	0	28	40	40	40	40	(4)	(5)	(12)	7	26	0
Polystyrene				88	110	125	125	125	125	125	125	75
ONP (#8)	15	28	28	80	214	159	31	48	76	118	76	108
OCC	28	28	30	94	159	214	97	73	99	112	55	105
OBB/OCC (Hard Pack)	20	20	20	38	159	120	5	17	20	65	38	71
Polycoat Containers					189	198	99	26	24	83	57	61

☐ Indicates FOB the municipality

▒ Indicates delivery to mill or industry

Notes:

- 1) Market prices are for baled materials (except glass) and are reported in Canadian \$ per metric tonne.
- 2) The market prices are based on an amalgamation of data from a network of contacts and, as such, do not reflect actual market prices being paid for residential material across Ontario.
- 3) The CSR Composite Index is calculated using a provincial average of multi-material program composition (effective January 2000, the index reflects broker's prices for steel). Details available upon request.

26 Wellington Street East, Suite 601, Toronto, Ontario M5E 1S2

Tel: 416-594-3456, Ext. 230

Fax: 416-594-3463

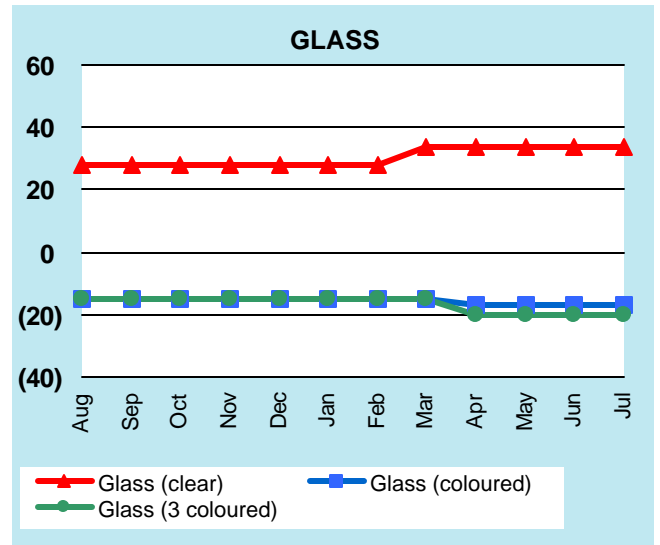
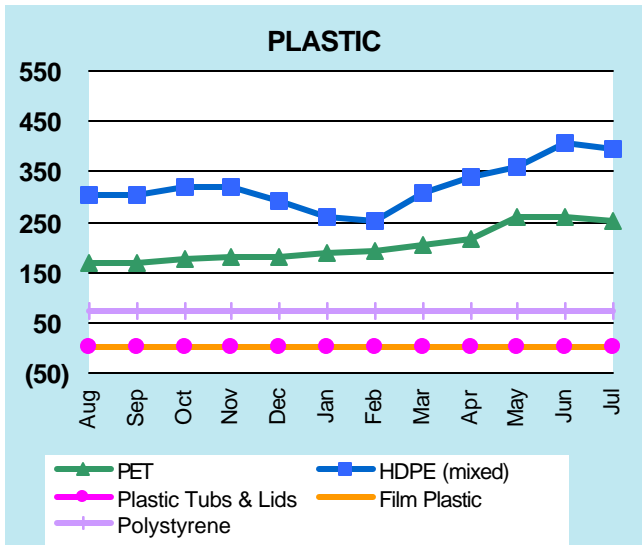
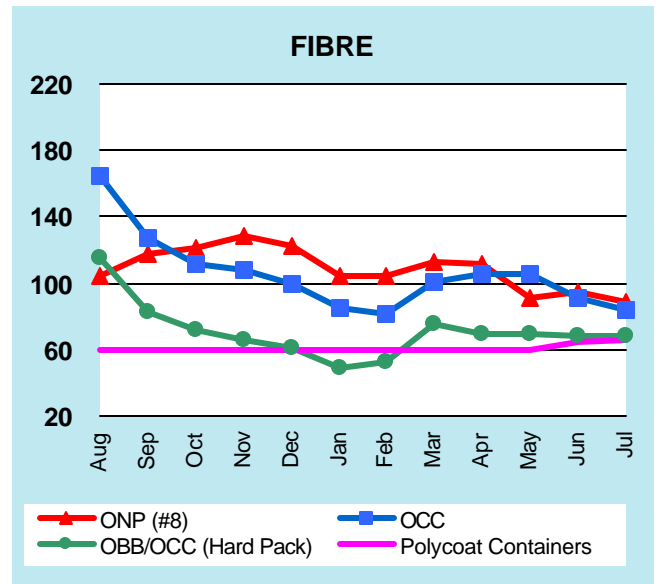
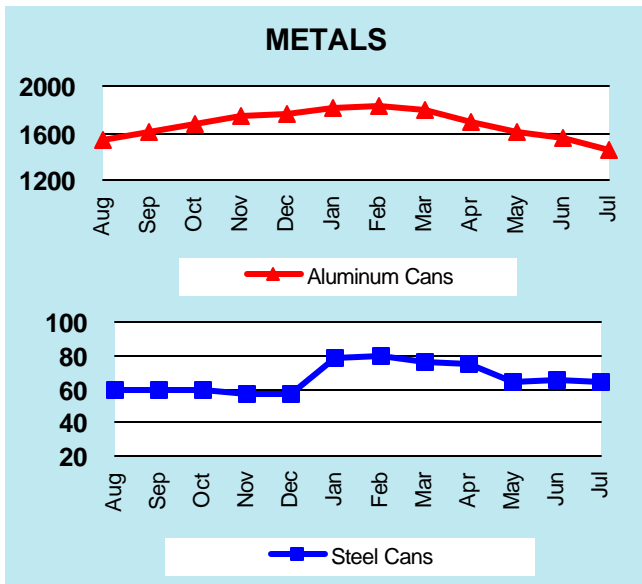
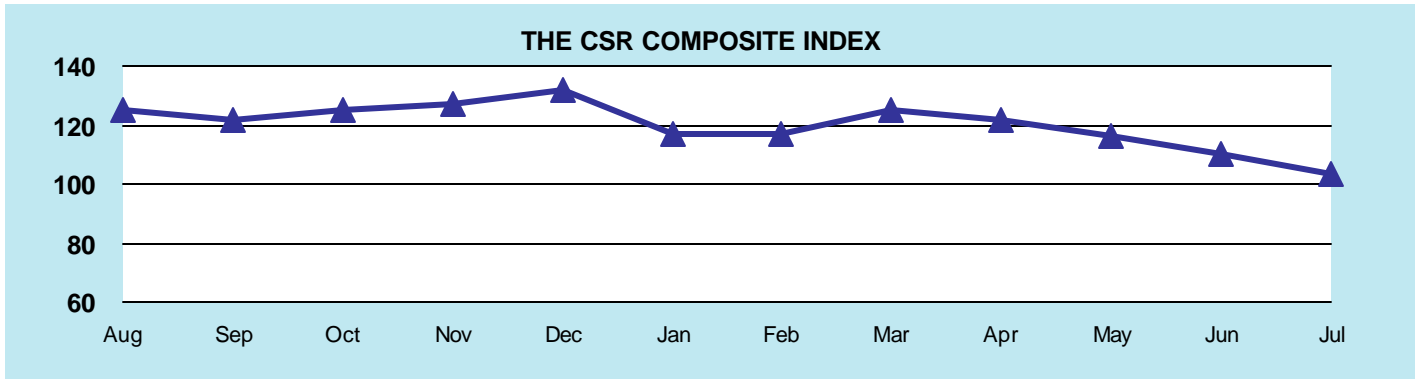
Toll-Free: 888-277-2762

Email: stone@csr.org

Website: www.csr.org

The CSR Sheet

Market Price Trends (CDN \$ per metric tonne)



GRAPHS PRODUCED FROM CURRENT TABLE (see reverse)