



# The Price Sheet

Market Price Trends Reported as of April 15, 2003

	CURRENT \$ (2002-2003)											
MATERIALS	May	Jun	Jul	Aug	Sep	Oct	Nov	Dec	Jan	Feb	Mar	Apr
Aluminum Cans	1826	1674	1628	1542	1604	1680	1750	1767	1820	1829	1796	1693
Steel Cans	45	60	60	60	60	60	57	57	79	80	76	75
Glass (clear)	30	30	30	28	28	28	28	28	28	28	34	34
Glass (coloured)	(15)	(15)	(15)	(15)	(15)	(15)	(15)	(15)	(15)	(15)	(15)	(17)
Glass (3 coloured)	(15)	(15)	(15)	(15)	(15)	(15)	(15)	(15)	(15)	(15)	(15)	(20)
PET	176	184	184	170	170	178	180	182	189	194	205	216
HDPE (mixed)	205	205	232	305	305	319	319	292	259	253	309	338
Plastic Tubs & Lids	0	0	0	0	0	0	0	0	0	0	0	0
Film Plastic	0	0	0	0	0	0	0	0	0	0	0	0
Polystyrene	75	75	75	75	75	75	75	75	75	75	75	75
ONP (#8)	92	92	101	104	117	121	129	123	104	104	113	111
OCC	81	152	200	165	127	112	108	99	85	82	101	105
OBB/OCC (Hard Pack)	44	70	96	115	83	72	66	61	49	52	76	70
Polycoat Containers	45	64	64	60	60	60	60	60	60	60	60	60
<b>CSR Composite Index</b>	<b>107</b>	<b>114</b>	<b>125</b>	<b>122</b>	<b>125</b>	<b>127</b>	<b>132</b>	<b>127</b>	<b>117</b>	<b>117</b>	<b>125</b>	<b>122</b>

	TWELVE MONTH ROLLING AVERAGE \$ (1991-2002)											
MATERIALS	1991	1992	1993	1994	1995	1996	1997	1998	1999	2000	2001	2002
Aluminum Cans	866	838	758	1731	2045	2045	1827	1595	1608	1893	1700	1717
Steel Cans										52	26	64
Glass (clear)	47	47	47	47	48	47	47	49	50	50	31	30
Glass (coloured)	44	44	44	44	44	42	39	27	24	24	(11)	(15)
Glass (3 coloured)						0	(4)	(25)	(20)	(15)	(15)	(15)
PET	220	141	141	181	650	650	155	300	144	326	324	186
HDPE (mixed)	90	90	90	259	345	356	447	226	211	373	257	278
Plastic Tubs & Lids					100	100	76	66	3	5	5	0
Film Plastic	0	28	40	40	40	40	(4)	(5)	(12)	7	26	0
Polystyrene				88	110	125	125	125	125	125	125	75
ONP (#8)	15	28	28	80	214	159	31	48	76	118	76	109
OCC	28	28	30	94	159	214	97	73	99	112	55	118
OBB/OCC (Hard Pack)	20	20	20	38	159	120	5	17	20	65	38	71
Polycoat Containers					189	198	99	26	24	83	57	59

Indicates FOB the municipality

Indicates delivery to mill or industry

Notes:

- 1) Market prices are for baled materials (except glass) and are reported in Canadian \$ per metric tonne.
- 2) The market prices are based on an amalgamation of data from a network of contacts and, as such, do not reflect actual market prices being paid for residential material across Ontario.
- 3) The CSR Composite Index is calculated using a provincial average of multi-material program composition (effective January 2000, the index reflects broker's prices for steel). Details available upon request.

26 Wellington Street East, Suite 601, Toronto, Ontario M5E 1S2

Tel: 416-594-3456, Ext. 230

Fax: 416-594-3463

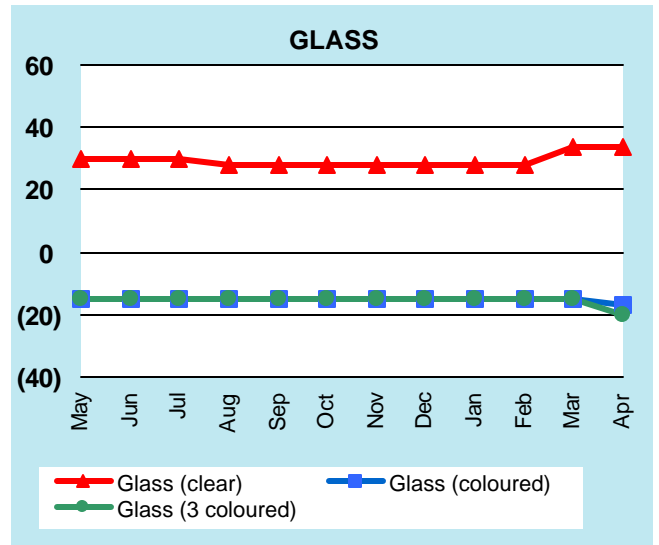
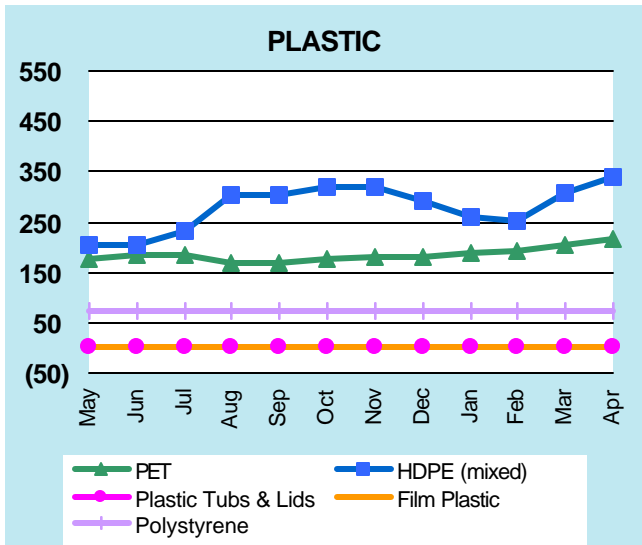
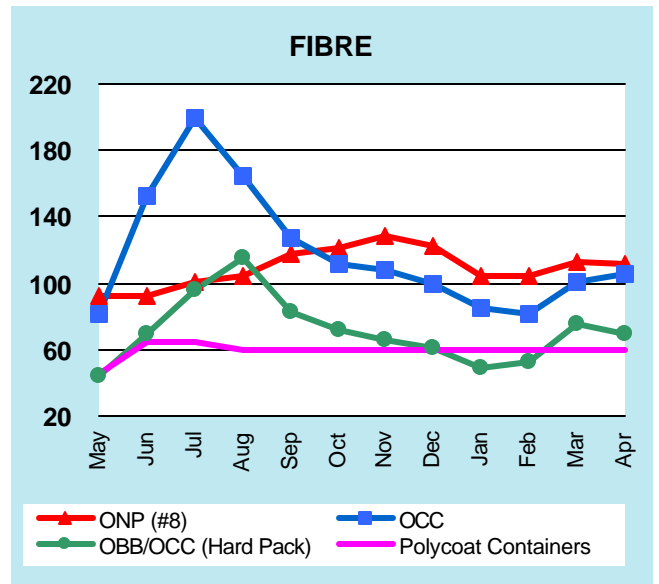
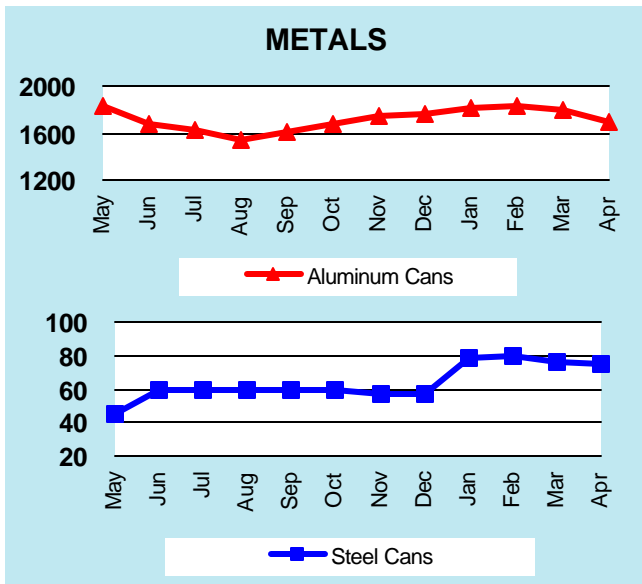
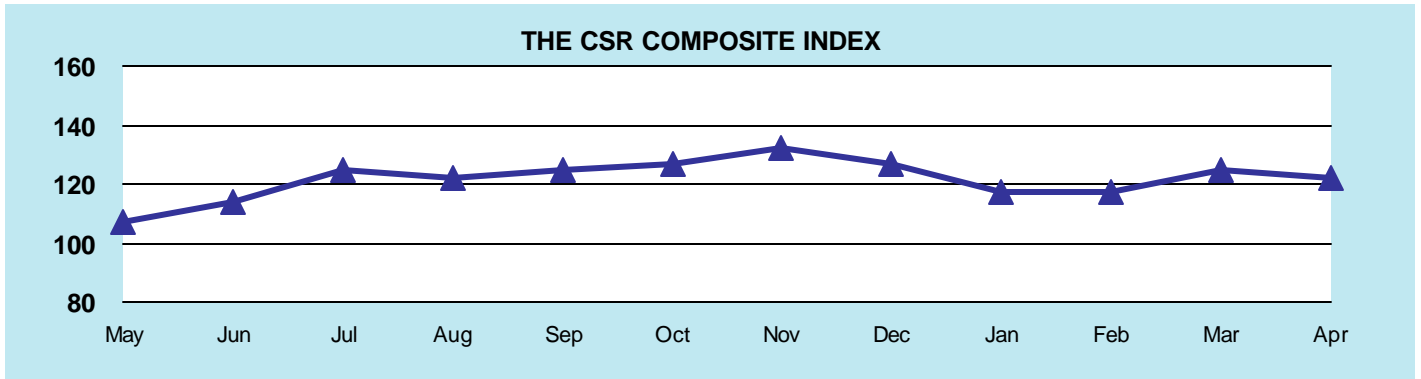
Toll-Free: 888-277-2762

Email: [stone@csr.org](mailto:stone@csr.org)

Website: [www.csr.org](http://www.csr.org)

# The CSR Sheet

## Market Price Trends (CDN \$ per metric tonne)



GRAPHS PRODUCED FROM CURRENT TABLE (see reverse)