



The Price Sheet

Ontario Spot Market Prices Reported as of October 15, 2002

| | CURRENT \$ (2001-2002) | | | | | | | | | | | |
|----------------------------|------------------------|-----------|-----------|-----------|-----------|------------|------------|------------|------------|------------|------------|------------|
| MATERIALS | Nov | Dec | Jan | Feb | Mar | Apr | May | Jun | Jul | Aug | Sep | Oct |
| Aluminum Cans | 1574 | 1670 | 1699 | 1702 | 1809 | 1826 | 1826 | 1674 | 1628 | 1542 | 1604 | 1680 |
| Steel Cans | 14 | 11 | 11 | 22 | 31 | 40 | 45 | 60 | 60 | 60 | 60 | 60 |
| Glass (clear) | 30 | 30 | 30 | 30 | 30 | 30 | 30 | 30 | 30 | 28 | 28 | 28 |
| Glass (coloured) | (23) | (23) | (23) | (23) | (23) | (23) | (15) | (15) | (15) | (15) | (15) | (15) |
| Glass (3 coloured) | (15) | (15) | (15) | (15) | (15) | (15) | (15) | (15) | (15) | (15) | (15) | (15) |
| PET | 215 | 173 | 153 | 110 | 134 | 174 | 176 | 184 | 184 | 170 | 170 | 178 |
| HDPE (mixed) | 160 | 130 | 130 | 130 | 179 | 175 | 205 | 205 | 232 | 305 | 305 | 319 |
| Plastic Tubs & Lids | 5 | 0 | 0 | 0 | 0 | 0 | 0 | 0 | 0 | 0 | 0 | 0 |
| Film Plastic | 27 | 27 | 0 | 0 | 0 | 0 | 0 | 0 | 0 | 0 | 0 | 0 |
| Polystyrene | 125 | 125 | 75 | 75 | 75 | 75 | 75 | 75 | 75 | 75 | 75 | 75 |
| ONP (#8) | 80 | 78 | 78 | 76 | 77 | 85 | 92 | 92 | 101 | 104 | 117 | 121 |
| OCC | 58 | 58 | 58 | 54 | 54 | 63 | 81 | 152 | 200 | 165 | 127 | 112 |
| OBB/OCC (Hard Pack) | 40 | 40 | 40 | 38 | 38 | 38 | 44 | 70 | 96 | 115 | 83 | 72 |
| Polycoat Containers | 55 | 55 | 55 | 55 | 55 | 55 | 45 | 64 | 64 | 60 | 60 | 60 |
| CSR Composite Index | 91 | 91 | 91 | 89 | 93 | 100 | 107 | 114 | 125 | 122 | 125 | 127 |

| | TWELVE MONTH ROLLING AVERAGE \$ (1991-2002) | | | | | | | | | | | |
|---------------------|---|------|------|------|------|------|------|------|------|------|------|------|
| MATERIALS | 1991 | 1992 | 1993 | 1994 | 1995 | 1996 | 1997 | 1998 | 1999 | 2000 | 2001 | 2002 |
| Aluminum Cans | 866 | 838 | 758 | 1731 | 2045 | 2045 | 1827 | 1595 | 1608 | 1893 | 1700 | 1686 |
| Steel Cans | | | | | | | | | | 52 | 26 | 40 |
| Glass (clear) | 47 | 47 | 47 | 47 | 48 | 47 | 47 | 49 | 50 | 50 | 31 | 30 |
| Glass (coloured) | 44 | 44 | 44 | 44 | 44 | 42 | 39 | 27 | 24 | 24 | (11) | (19) |
| Glass (3 coloured) | | | | | | 0 | (4) | (25) | (20) | (15) | (15) | (15) |
| PET | 220 | 141 | 141 | 181 | 650 | 650 | 155 | 300 | 144 | 326 | 324 | 168 |
| HDPE (mixed) | 90 | 90 | 90 | 259 | 345 | 356 | 447 | 226 | 211 | 373 | 257 | 206 |
| Plastic Tubs & Lids | | | | | 100 | 100 | 76 | 66 | 3 | 5 | 5 | 0 |
| Film Plastic | 0 | 28 | 40 | 40 | 40 | 40 | (4) | (5) | (12) | 7 | 26 | 5 |
| Polystyrene | | | | 88 | 110 | 125 | 125 | 125 | 125 | 125 | 125 | 83 |
| ONP (#8) | 15 | 28 | 28 | 80 | 214 | 159 | 31 | 48 | 76 | 118 | 76 | 92 |
| OCC | 28 | 28 | 30 | 94 | 159 | 214 | 97 | 73 | 99 | 112 | 55 | 99 |
| OBB/OCC (Hard Pack) | 20 | 20 | 20 | 38 | 159 | 120 | 5 | 17 | 20 | 65 | 38 | 60 |
| Polycoat Containers | | | | | 189 | 198 | 99 | 26 | 24 | 83 | 57 | 57 |

Indicates FOB the municipality

Indicates delivery to mill or industry

Notes:

- 1) Average spot market prices are for baled materials (except glass) and are reported in Canadian \$ per metric tonne.
- 2) The data do not reflect special contract or pricing arrangements (which may exist).
- 3) The spot market prices are based on an amalgamation of data from a network of contacts and, as such, do not reflect actual market prices being paid for residential material across Ontario.
- 4) The CSR Composite Index is calculated using a provincial average of multi-material program composition (effective January 2000, the index reflects broker's prices for steel). Details available upon request.

26 Wellington Street East, Suite 601, Toronto, Ontario M5E 1S2

Tel: 416-594-3456, Ext. 230

Fax: 416-594-3463

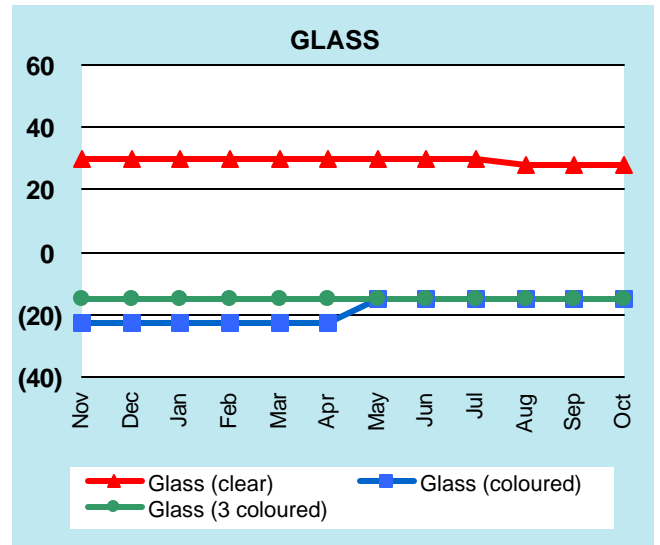
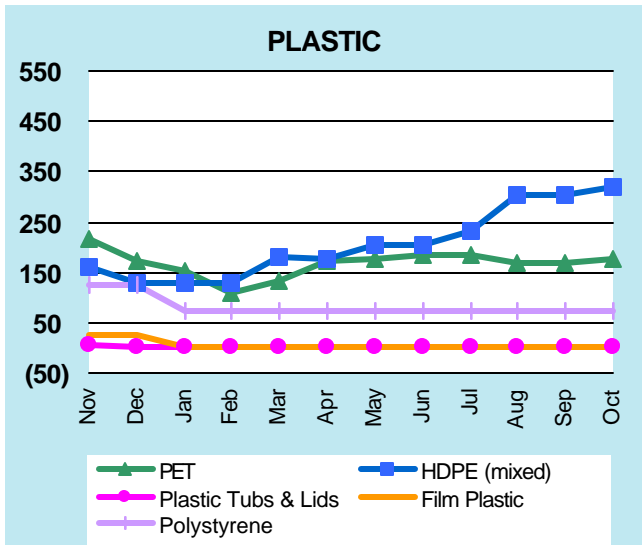
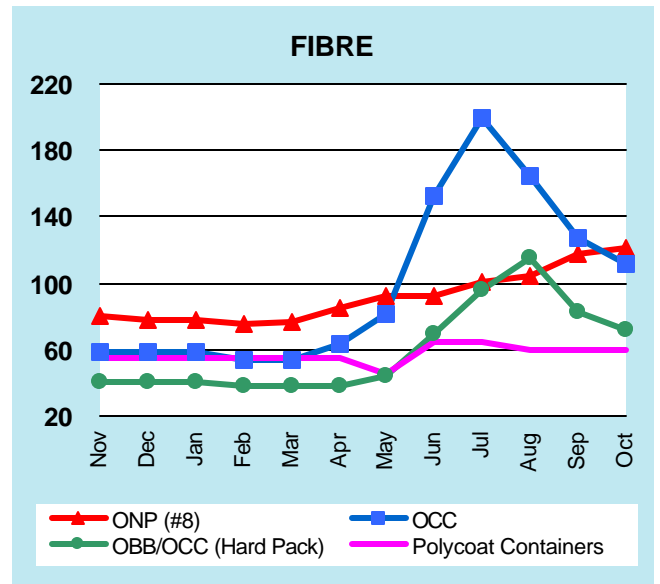
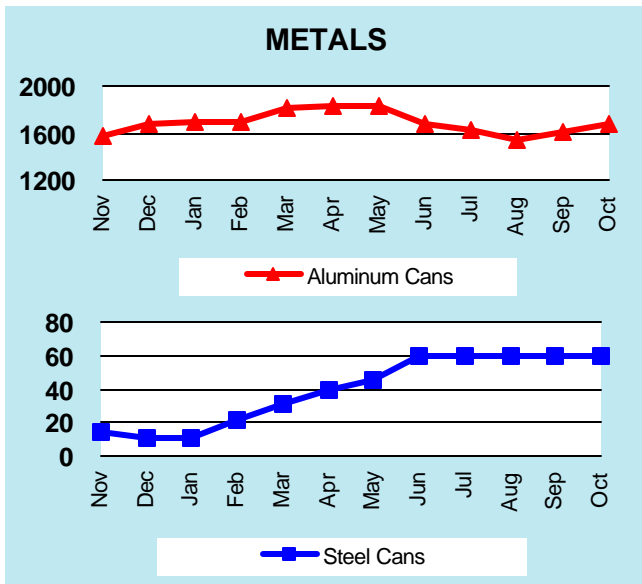
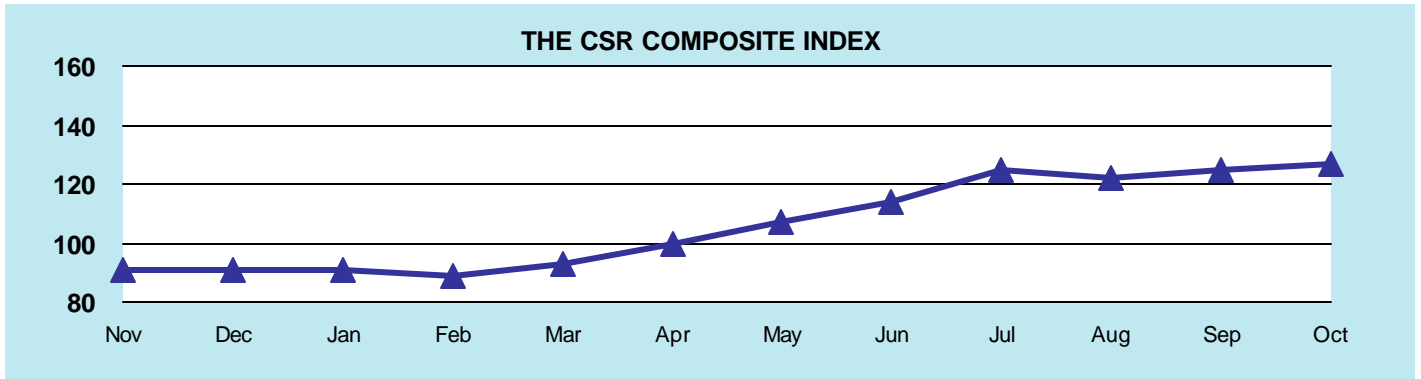
Toll-Free: 888-277-2762

Email: stone@csr.org

Website: www.csr.org

The CSR Sheet

Market Price Trends (CDN \$ per metric tonne)



GRAPHS PRODUCED FROM CURRENT TABLE (see reverse)