



# The Price Sheet

Ontario Spot Market Prices Reported as of July 15, 2002

	CURRENT \$ (2001-2002)											
MATERIALS	Aug	Sep	Oct	Nov	Dec	Jan	Feb	Mar	Apr	May	Jun	Jul
Aluminum Cans	1542	1553	1558	1574	1670	1699	1702	1809	1826	1826	1674	1628
Steel Cans	24	30	22	14	11	11	22	31	40	45	60	60
Glass (clear)	25	30	30	30	30	30	30	30	30	30	30	30
Glass (coloured)	(15)	(23)	(23)	(23)	(23)	(23)	(23)	(23)	(23)	(15)	(15)	(15)
Glass (3 coloured)	(15)	(15)	(15)	(15)	(15)	(15)	(15)	(15)	(15)	(15)	(15)	(15)
PET	321	308	273	215	173	153	110	134	174	176	184	184
HDPE (mixed)	220	220	169	160	130	130	130	179	175	205	205	232
Plastic Tubs & Lids	5	5	5	5	0	0	0	0	0	0	0	0
Film Plastic	27	27	27	27	27	0	0	0	0	0	0	0
Polystyrene	125	125	125	125	125	75	75	75	75	75	75	75
ONP (#8)	74	76	80	80	78	78	76	77	85	92	92	101
OCC	50	58	58	58	58	58	54	54	63	81	152	200
Residential (Soft) Mix	35	43	35	40	40	40	38	38	38	44	70	96
Polycoat Containers	55	55	55	55	55	55	55	55	55	45	64	64
<b>CSR Composite Index</b>	<b>88</b>	<b>92</b>	<b>92</b>	<b>91</b>	<b>91</b>	<b>91</b>	<b>89</b>	<b>93</b>	<b>100</b>	<b>107</b>	<b>114</b>	<b>125</b>

	TWELVE MONTH ROLLING AVERAGE \$ (1991-2002)											
MATERIALS	1991	1992	1993	1994	1995	1996	1997	1998	1999	2000	2001	2002
Aluminum Cans	866	838	758	1731	2045	2045	1827	1595	1608	1893	1700	1672
Steel Cans										52	26	31
Glass (clear)	47	47	47	47	48	47	47	49	50	50	31	30
Glass (coloured)	44	44	44	44	44	42	39	27	24	24	(11)	(20)
Glass (3 coloured)						0	(4)	(25)	(20)	(15)	(15)	(15)
PET	220	141	141	181	650	650	155	300	144	326	324	200
HDPE (mixed)	90	90	90	259	345	356	447	226	211	373	257	180
Plastic Tubs & Lids					100	100	76	66	3	5	5	2
Film Plastic	0	28	40	40	40	40	(4)	(5)	(12)	7	26	11
Polystyrene				88	110	125	125	125	125	125	125	96
ONP (#8)	15	28	28	80	214	159	31	48	76	118	76	82
OCC	28	28	30	94	159	214	97	73	99	112	55	79
Residential (Soft) Mix	20	20	20	38	159	120	5	17	20	65	38	46
Polycoat Containers					189	198	99	26	24	83	57	56

Indicates FOB the municipality

Indicates delivery to mill or industry

Notes:

- 1) Average spot market prices are given in Canadian \$ per metric tonne.
- 2) The data do not reflect special contract or pricing arrangements (which may exist).
- 3) The spot market prices are based on an amalgamation of data from a network of contacts and, as such, do not reflect actual market prices being paid for residential material across Ontario.
- 4) The CSR Composite Index is calculated using a provincial average of multi-material program composition (effective January 2000, the index reflects broker's prices for steel). Details available upon request.

26 Wellington Street East, Suite 601, Toronto, Ontario M5E 1S2

Tel: 416-594-3456, Ext. 230

Fax: 416-594-3463

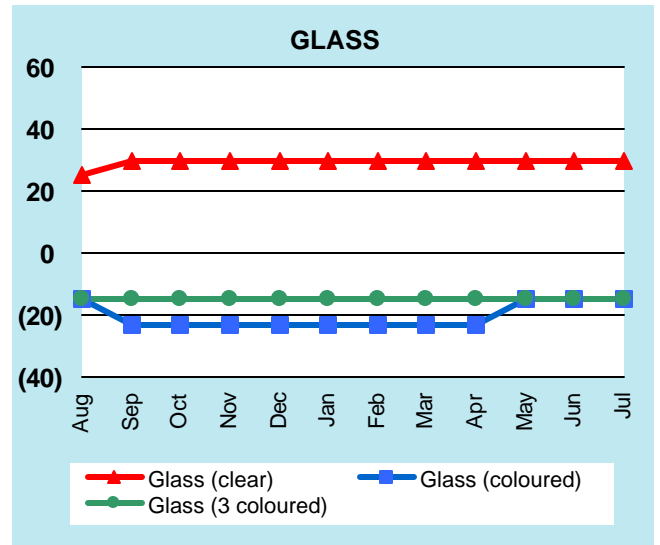
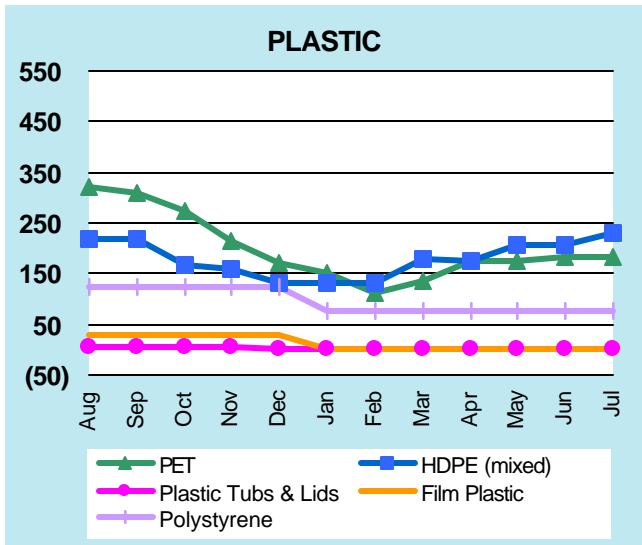
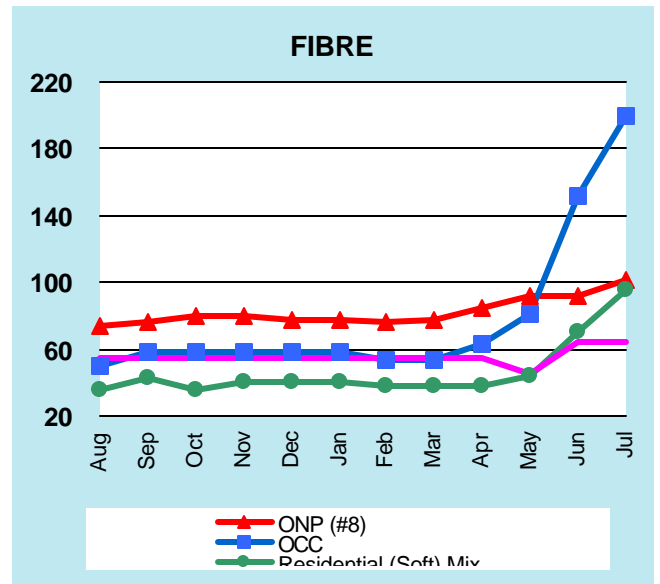
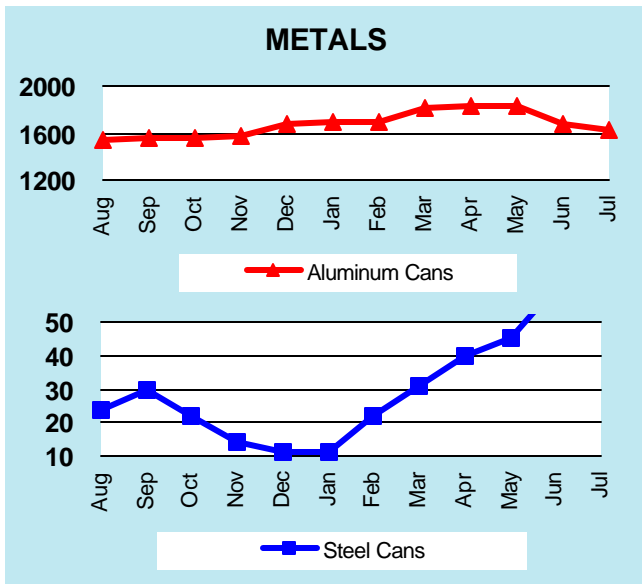
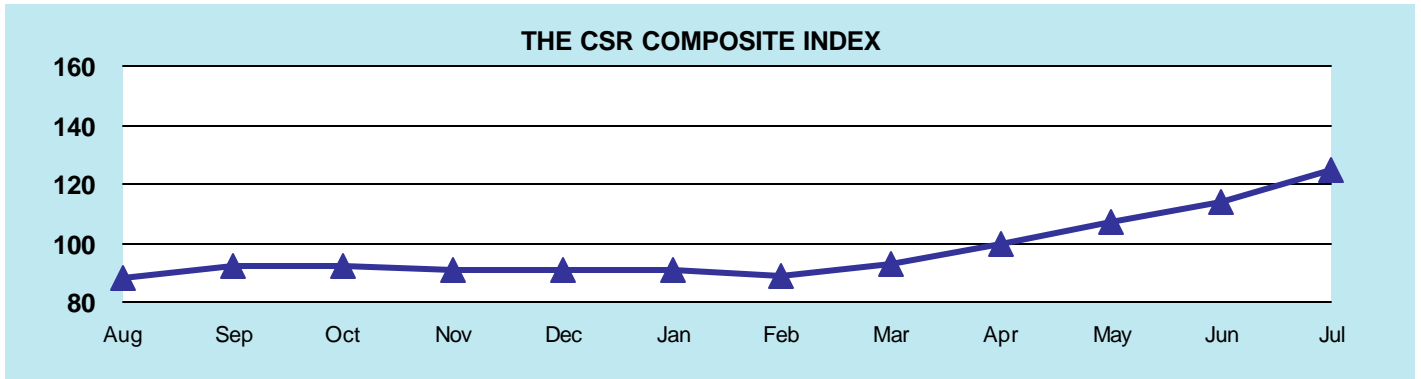
Toll-Free: 888-277-2762

Email: [stone@csr.org](mailto:stone@csr.org)

Website: [www.csr.org](http://www.csr.org)

# The CSR Sheet

## Market Price Trends (CDN \$ per metric tonne)



GRAPHS PRODUCED FROM CURRENT TABLE (see reverse)